

**1 STRUCTURAL LAYOUT PLAN**  
SCALE: 1/4" = 1'-0"

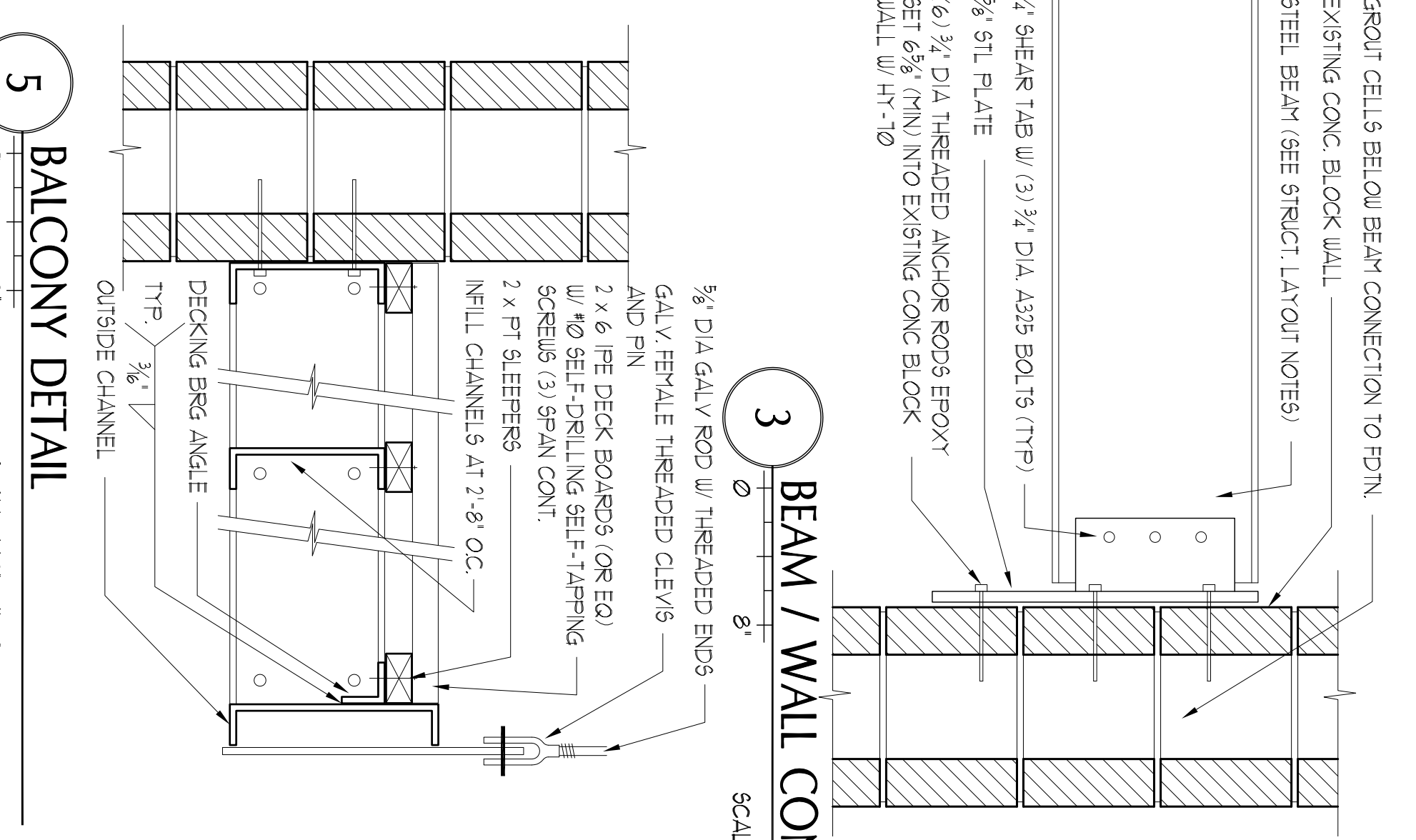
**2 STRUCTURAL ROOF PLAN**  
SCALE: 1/4" = 1'-0"

**STRUCTURAL LAYOUT PLAN - KEYED NOTES**

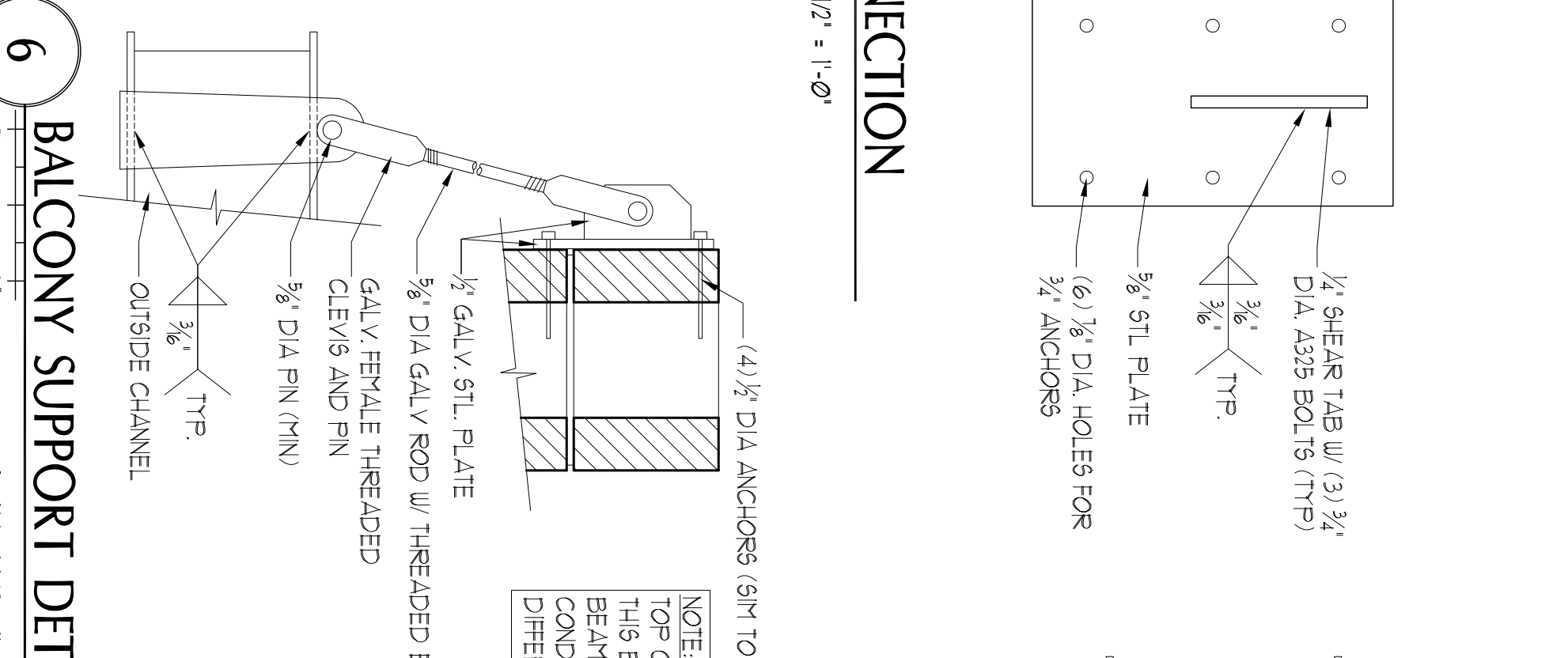
- 1 EXISTING STEEL COLUMN TO REMAIN
- 2 EXISTING STEEL COLUMN TO REMAIN CUT AS REQUIRED FOR RELOCATION OF EXISTING BEAM (SEE NOTE 3).
- 3 EXISTING BEAM TO BE LOWERED APPROX. 2'-2 1/2' (E.V.). TOP OF STEEL TO ALIGN WITH REMAINDER OF EXISTING BEAMS. INSTALL 3/4" DIA x 2 1/2" H.A.S. ACROSS TOP OF BEAM AT 18" OC.
- 4 EXISTING STEEL BEAM TO REMAIN. INSTALL 3/4" DIA x 2 1/2" H.A.S. ACROSS TOP OF BEAM AT 18" OC.
- 5 1/4" x 22 STL BEAM W/ 3/4" x 2 1/2" H.A.S. ACROSS TOP OF BEAM AT 18" OC.
- 6 1/2" SHEAR TAB W/ (3) 3/4" DIA A335 BOLTS (TYP. - UNO).
- 7 1/2" x 50 STL BEAM W/ 3/4" x 2 1/2" H.A.S. ACROSS TOP OF BEAM AT 18" OC.
- 8 1/4" x 22 STL BEAM W/ 3/4" x 2 1/2" H.A.S. ACROSS TOP OF BEAM AT 18" OC.
- 9 1.5 x 3 x 1/2" L.V. CONT. DECK BEARING ANGLE (TYP.). SEE 1, SH1 5-10
- 10 4" TOTAL THICKNESS LIGHTWEIGHT CONC ON 1 1/2" V.I. x 20 GA (2-SPAN DECK MIN) W/ WUF 6 x 6 - W23 x W23 (TYP IN SLAB). MAX 2-SPAN
- 11 GROUT CELLS AT BEAM CONNECTION DOWN TO FOUNDATION
- 12 EXISTING STEEL ROOF BEAMS TO REMAIN (PROTECT AS REQD)
- 13 ROOF HATCH (SEE ADD. ALTERNATE #1)
- 14 1 1/2" x 3 1/2" x 1/2" GALV. LOOSE LINES. INSTALL MULTIPLE TO FILL & SUPPORT EX CPU WALL ABOVE. GROUT JAMB AND HEADERS SOLID AND PROVIDE 4 MIN BEARING AT JAMB - TYP.
- 15 12" WIDE x 8" THICK CONC PAD FOR STAIR STRINGER BRG
- 16 PT 2 x 1/2" STAIR STRINGERS AT 12" OC. W/ LSC STRINGER HANGERS TYP
- 17 PT 2 x 1/2" LEDGER FASTENED TO EX MASONRY WALL W/ (2) 1/2" DIA TAPCONS W/ 3/4" MIN EMBEDMENT
- 18 DEL PT 2 x 8 EDGE MEMBERS (TYP)
- 19 PT 2 x 8 DECK JOIST AT 12" OC. W/ L1536-2 HANGERS - TYP
- 20 8" DIA CIP CONC COL. W/ 4-0" ROOST PROTECTION ON 10" DIA BEFOOT FIG W/ FT 4 x 4 DECK POST W/ 2 x 4 DIAGONAL BRACE (W/ (4) 10# EA END/ON ABUT4-2 POST BASE W/ 1/2" DIA x 8" W/A
- 21 REPAIR DAMAGED CPU HEADER AS REQUIRED OVER EX WINDOW
- 22 CS x 617 AT 2'-8" OC. (GALV)
- 23 CS x 115 W/ MITERED OUTSIDE CORNER (GALV)
- 24 CS x 617 (GALV) W/ MITERED INSIDE CORNER ANCHORED TO EXISTING CPU WALL W/ (2) 1/2" DIA THEADED ROD ANCHORS AT 2'-8" OC. EPOXY SET W/ 6" MIN EMBED AND HIT 11" HT-10 AND 55 SCREEN TUBES.
- 25 3/4" DIA THEADED ROD TO BRACKET ATTACHED TO TOP COURSE OF GROUTED BLOCK (SEE DTL & SH1 5-10).
- 26 2 x 2 x 3/4" DECKING BRG ANGLE (GALV)
- 27 3/4" STL PLATE WELDED TO BOTTOM FLANGES / PLATE TO BE DOOR OPENING WIDTH + 4" ON EA SIDE. SMOOTH EX BLOCK WALL AND INSERT FLANGE OF CHANNEL WITH 1/4", 3-1/2" WELDS. TECH FASTEN CHANNELS TO EX CPU WALL WITH (4) 3/4" DIA x 6" EPOXY SET AT BOTH ENDS AND (2) AT 12" OC. OVER LENGTH OF NEW OPENING. SHORE EX STL ROOF BEAM AS REQUIRED WHILE INSTALLING NEW HEADER

**STRUCTURAL LAYOUT PLAN - GENERAL NOTES**

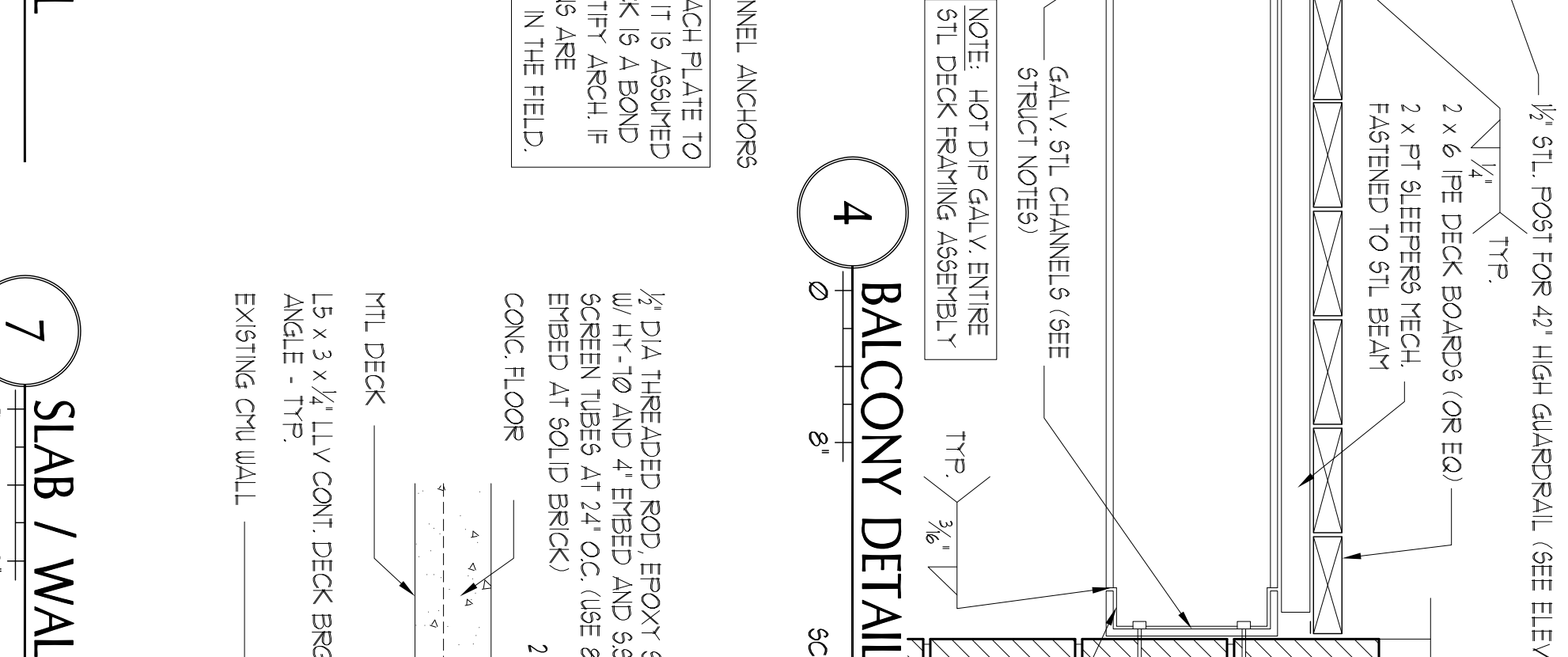
- o STEEL SHOP DRAWINGS REQUIRED.



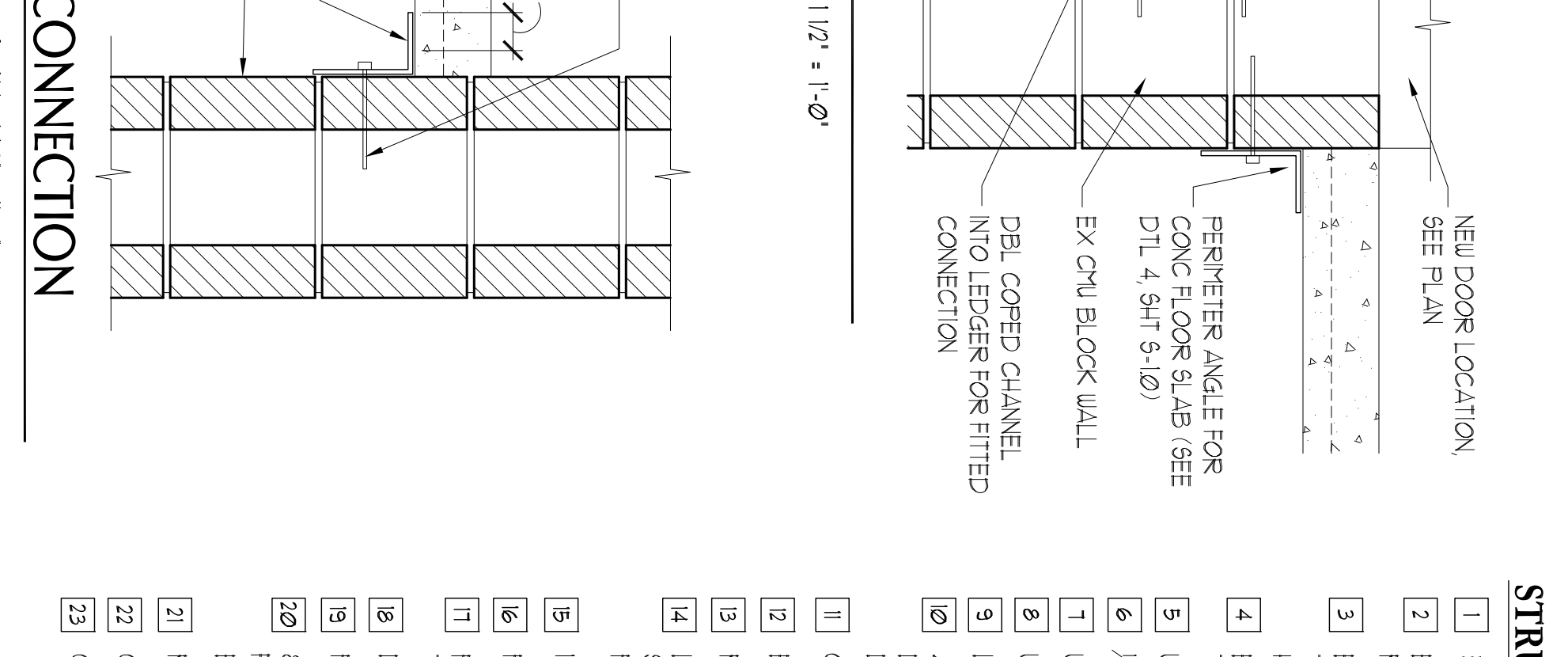
**3 BEAM / WALL CONNECTION**  
SCALE: 1/2" = 1'-0"



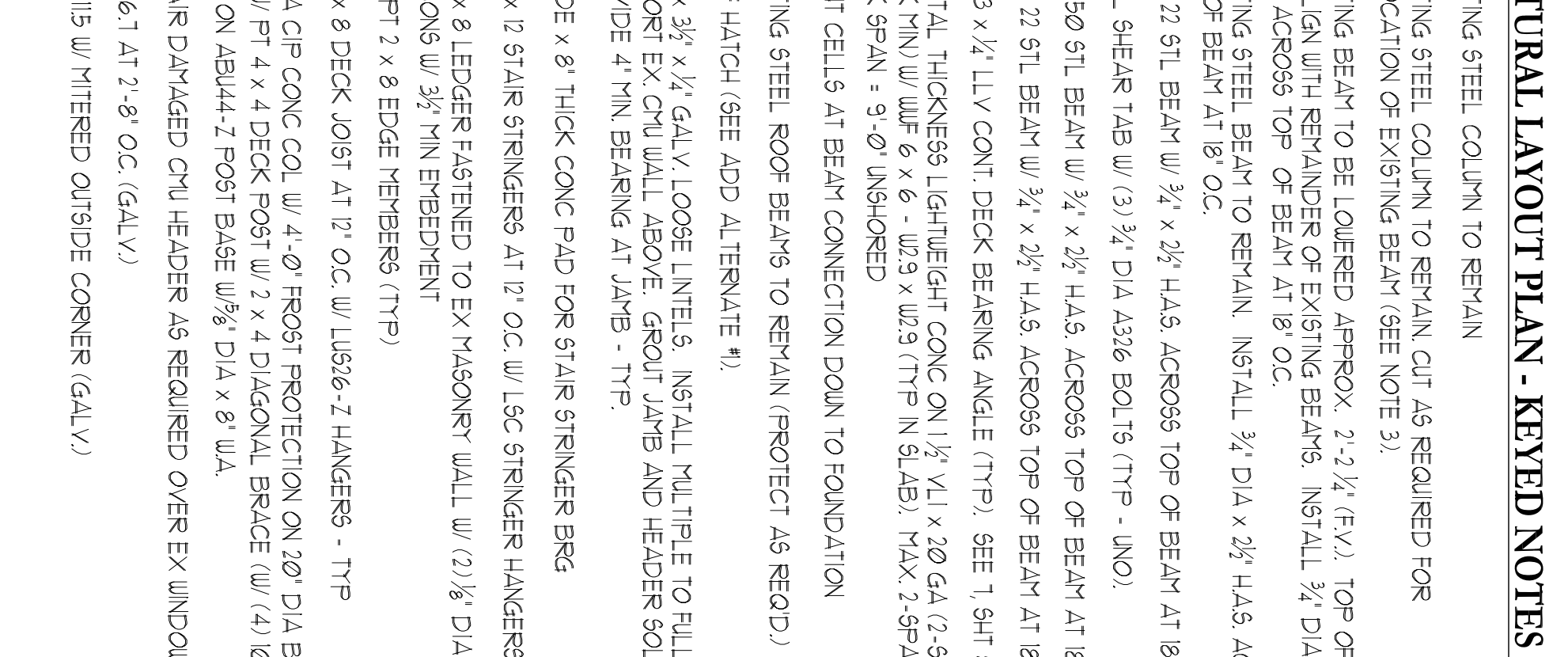
**4 BALCONY DETAIL**  
SCALE: 1/2" = 1'-0"



**5 BALCONY DETAIL**  
SCALE: 1/2" = 1'-0"



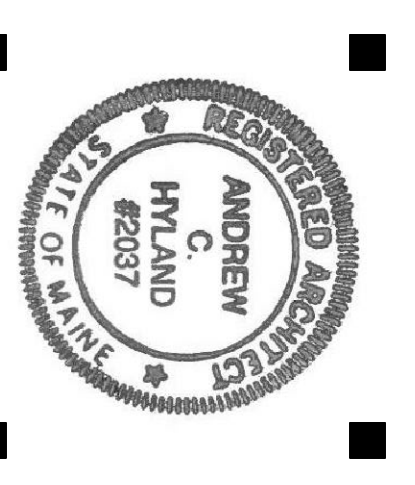
**6 BALCONY SUPPORT DETAIL**  
SCALE: 1/2" = 1'-0"



**7 SLAB / WALL CONNECTION**  
SCALE: 1/2" = 1'-0"



**PORT-CITY ARCHITECTURE**  
65 NEWBURY STREET  
PORTLAND, ME 04101  
207.761.9000



**Structural Integrity**  
Consulting Engineers, Inc.

**ANDERSON STREET INDUSTRIAL**  
219 Anderson Street  
Portland, Maine

PERMIT SET  
NOT FOR CONSTRUCTION

#	DATE	DESCRIPTION
1	9/9/14	PERMIT SET

**STRUCTURAL PLAN**

Drawn By: MC  
Checked By: ACH  
Date Issued: 09-19-2014  
Project Number: 1416  
Drawing Scale: AS NOTED

**S-10**