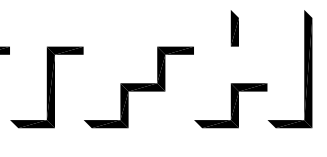


© 2008 TFH ARCHITECTS

219 ANDERSON STREET
FOR BILL SIMPSON
PORTLAND, MAINE



TFH ARCHITECTS
100 COMMERCIAL STREET
PORTLAND MAINE 04101
TELEPHONE 207 775 6141
ARCHITECTURE PLANNING

CONSULTANTS:

REVISIONS:

DATE: 07/28/08

PROJECT No. 0707

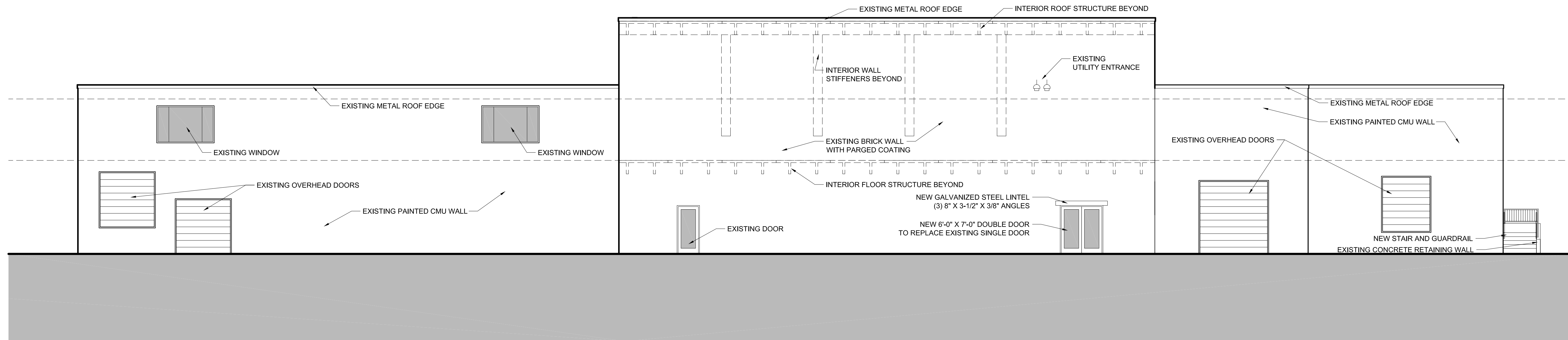
DRAWN BY: RJS

CHECKED BY: TST

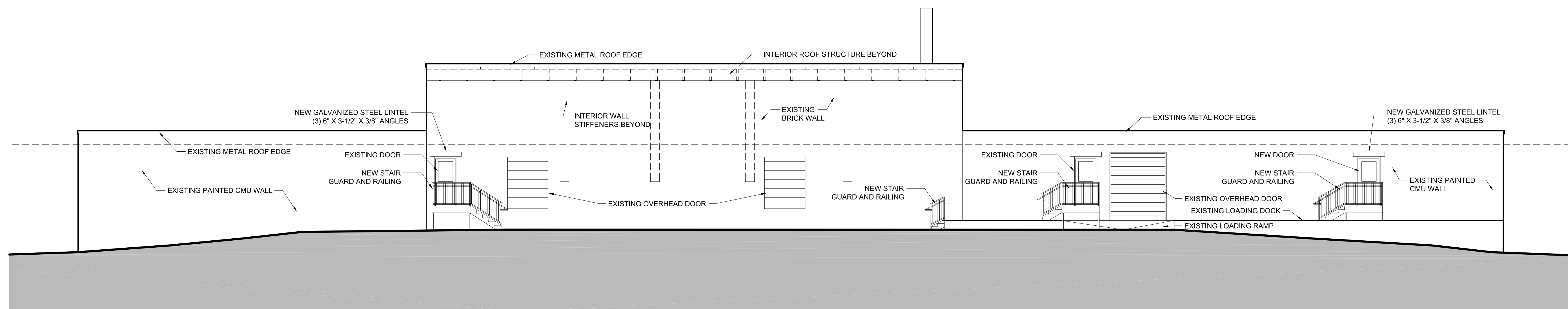
SCALE: AS NOTED

SHEET TITLE:
ELEVATIONS

A2.1



2 WEST ELEVATION (FROM ANDERSON ST)
A2.1 1/8" = 1'-0"



1 EAST ELEVATION (FROM REAR PARKING LEVEL)
A2.1 1/8" = 1'-0"