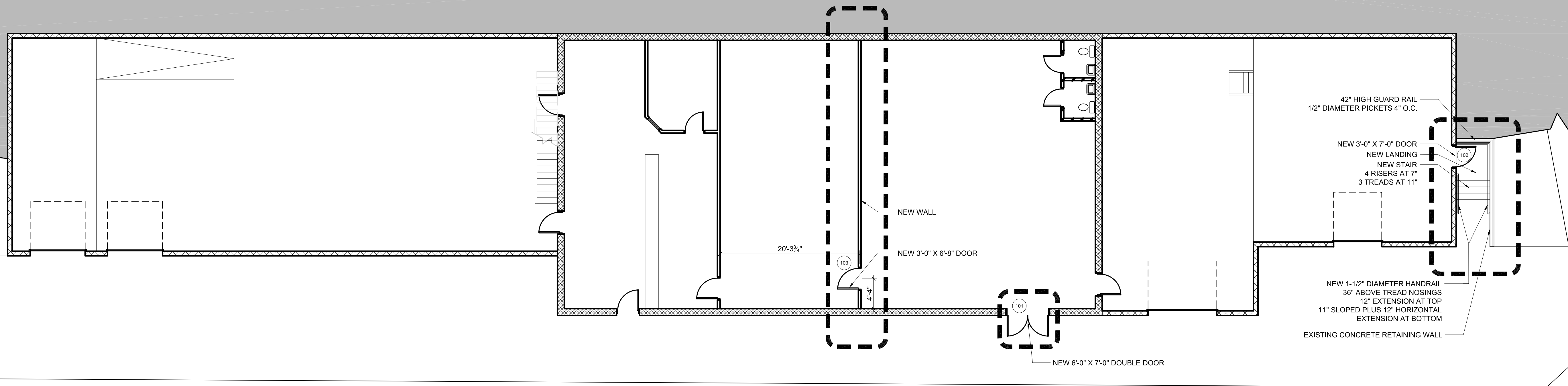


2 UPPER LEVEL PLAN (REAR PARKING LEVEL)
1/8" = 1'-0"

BELOW GRADE



1 LOWER LEVEL PLAN (ANDERSON STREET)
1/8" = 1'-0"

PLAN NOTES

- 1.) NEW INTERIOR PARTITIONS TO BE 2X4 WOOD STUDS AT 16" O.C. WITH (1) LAYER OF 5/8" DRYWALL EACH SIDE, UNLESS NOTED OTHERWISE
- 2.) NEW INTERIOR PARTITIONS INDICATED WITH A (1) HOUR FIRE RATING TO BE 2X4 WOOD STUDS AT 16" O.C. WITH (1) LAYER OF 'TYPE-X' 5/8" DRYWALL EACH SIDE WITH 3-1/2" FIBERGLASS BATTS, WALL TO MEET UL# - U305 DESIGN

