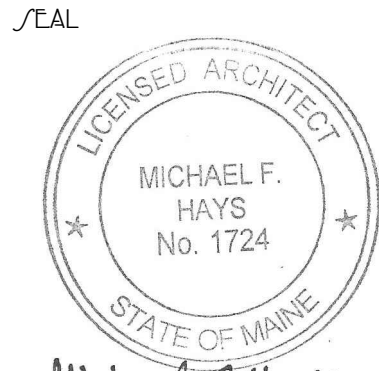


GRANT HAYS
ASSOCIATES

ARCHITECTURE & INTERIOR DESIGN
P.O. BOX 6179 FALMOUTH MAINE 04105
207.871.5900 www.granthays.com



Michael F. Hays

REVISIONS
25 APR 2017
22 MAY 2017

DRAWING NAME



GOODFIRE
BREWING COMPANY
219 ANDERSON STREET
PORTLAND, MAINE 04102

SHEET

DEMOLITION
PLAN

DATE
13 FEB 2017

SCALE
1/4"=1'-0"

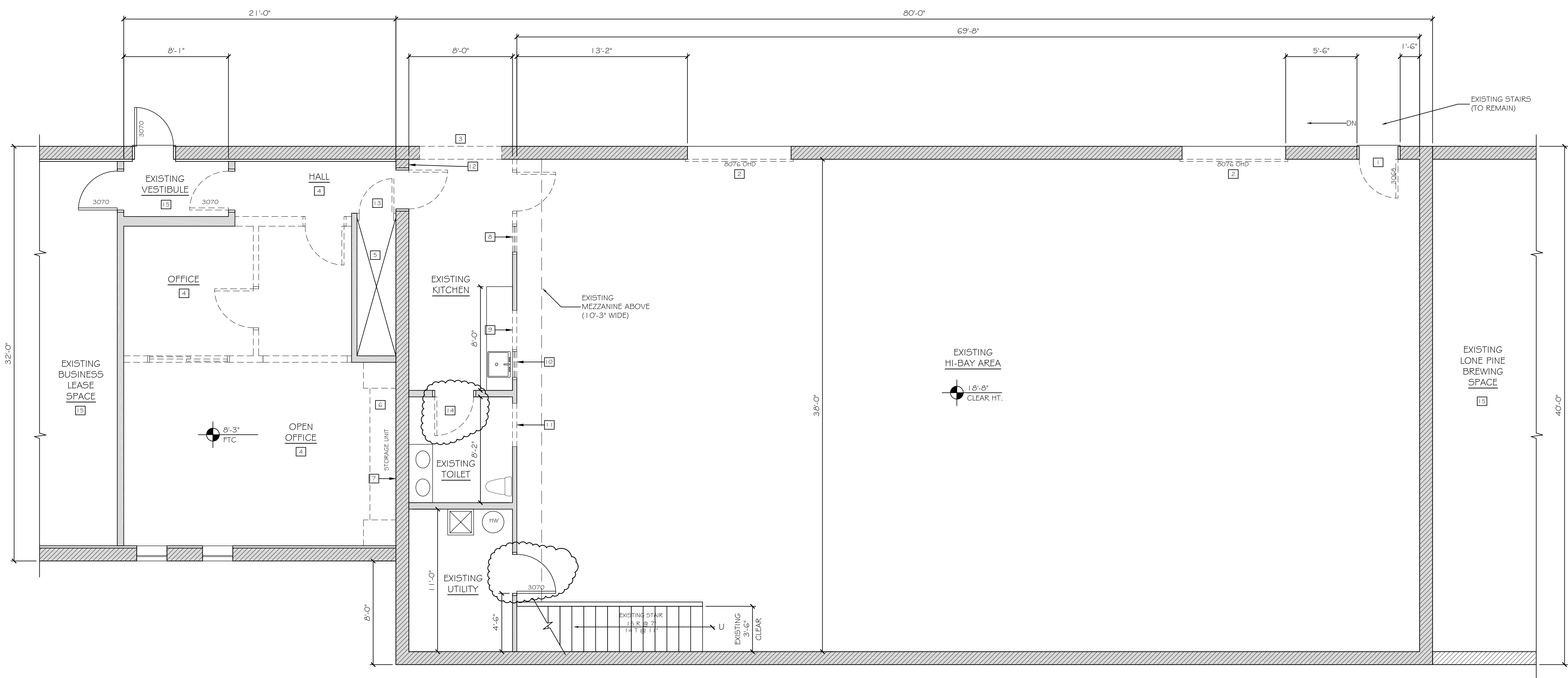
DRAWN
MFH/mgk

JOB NO.
161001

SHEET

AD-1

COPYRIGHT
REPRODUCTION OR RELY OF THIS
DOCUMENT WITHOUT WRITTEN
PERMISSION FROM GRANT HAYS
ASSOCIATES IS PROHIBITED.



EXISTING CONDITIONS / DEMOLITION FLOOR PLAN
SCALE: 1/4" = 1'-0"



DEMOLITION NOTES LEGEND

- | | |
|--|---|
| 1 REMOVE EXTERIOR DOOR AND FRAME. PREP MASONRY OPENING FOR NEW DOOR AND FRAME. | 7 REMOVE ALL FRAMING AND FINISHES BACK TO EXISTING MASONRY WALL SURFACE. |
| 2 REMOVE EXTERIOR OVERHEAD DOOR. PREP MASONRY OPENING FOR NEW OVERHEAD DOOR. | 8 REMOVE EXISTING DOOR, FRAME, WINDOW, AND PARTITION FOR NEW OPENING. |
| 3 REMOVE EXTERIOR CMU INFILL AT EXISTING MASONRY OPENING. PREP MASONRY OPENING FOR NEW DOORS AND FRAME. | 9 REMOVE EXISTING WALL FOR NEW 36" X 36" PASS-THRU. |
| 4 REMOVE ALL INTERIOR PARTITIONS, DOORS, FRAMES, SUSPENDED CEILING/LIGHTING, AND FLOOR FINISHES IN THIS AREA. PREP SURFACES FOR NEW FINISHES AND LIGHTING. | 10 REMOVE EXISTING WINDOW AND INFILL TO MATCH ADJACENT PARTITION. |
| 5 INFILL EXISTING FLOOR OPENING. SEE STRUCTURAL DRAWINGS. | 11 REMOVE EXISTING WALL FOR NEW 3'-0" X 6'-8" DOOR. |
| 6 REMOVE BUILT-IN STORAGE CABINETS & SHELVING AND ASSOCIATED FRAMING BACK TO MASONRY WALL SURFACE. | 12 REMOVE EXISTING GWB/FURRING TO EXISTING BRICK (TO BE EXPOSED FINISH). |
| | 13 REMOVE EXISTING GUARDRAIL. |
| | 14 REMOVE EXISTING DOOR AND FRAME AND INFILL TO MATCH ADJACENT PARTITION. |
| | 15 NO WORK (NIC). |