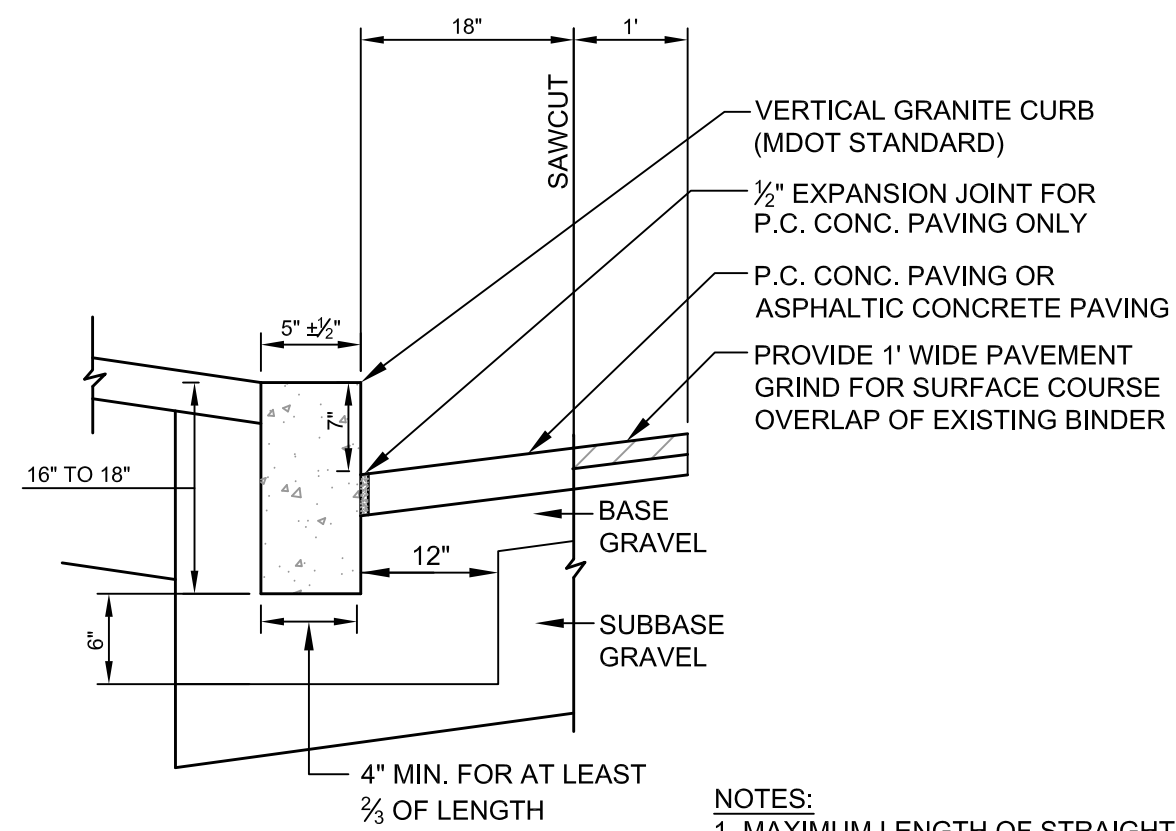


- NOTES:**
1. APPLY TACK COAT BETWEEN BINDER AND SURFACE COURSES.
 2. ALL MATERIALS SHALL CONFORM TO MDOT SPECIFICATIONS, LATEST REVISION.
 3. COMPACTION OF ALL MATERIALS TO BE IN ACCORDANCE WITH THE SPECIFICATIONS AND THE GEOTECHNICAL REPORT.

**STANDARD DUTY
BITUMINOUS CONCRETE PAVEMENT SECTION**

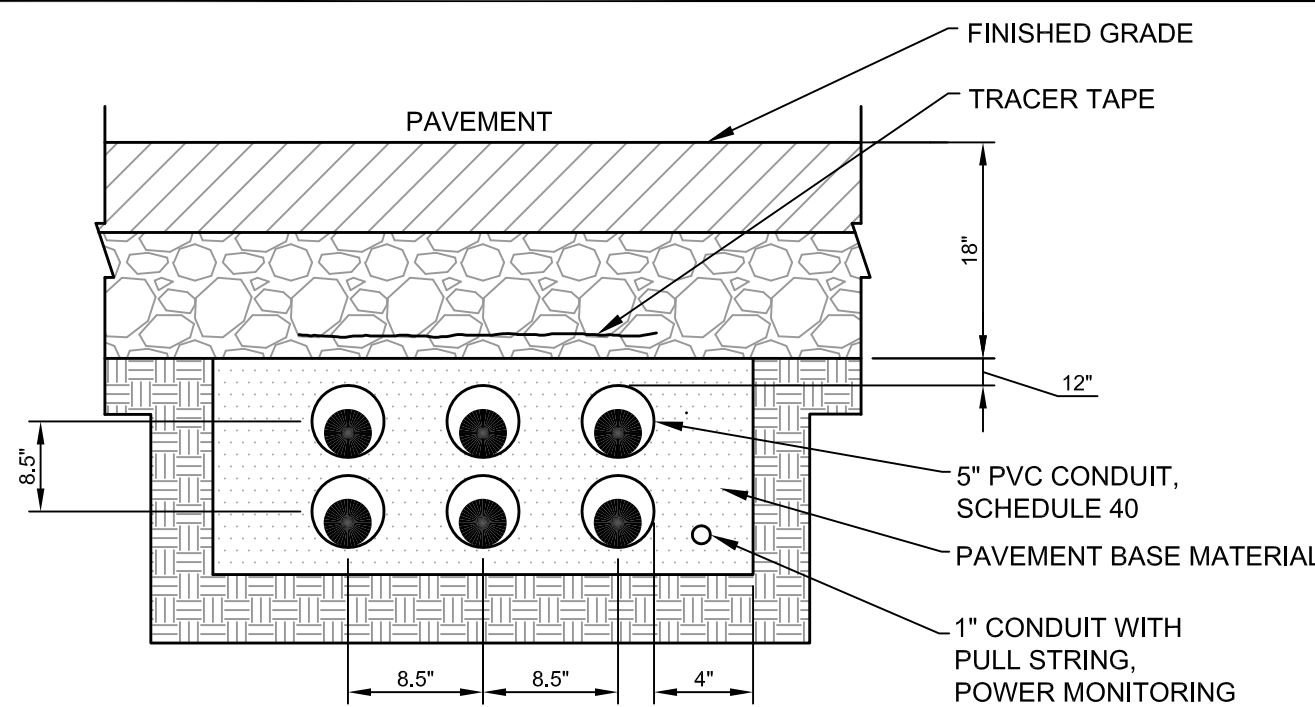
(A) N.T.S.



- NOTES:**
1. MAXIMUM LENGTH OF STRAIGHT CURB STONES = 8'
 2. MINIMUM LENGTH OF STRAIGHT CURB STONES = 3'
 3. CIRCULAR CURB REQUIRED FOR RADIUS LESS THAN 50'
 4. GROUT OR CAULK ALL CURB JOINTS OVER 1/4" IN WIDTH. INSTALL STRIP OF FILTER FABRIC BEHIND EACH CURB JOINT.

VERTICAL GRANITE CURB

(B) N.T.S.



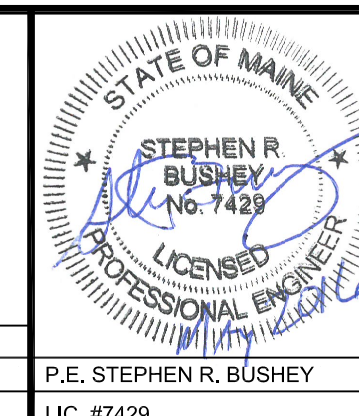
- NOTES:**
1. CONDUIT BANK WILL EXTEND 5' BEYOND FOUNDATION WALL. CAP ALL CONDUITS.
 2. THE 480/277V TRANSFORMER PAD SHALL HAVE 6 CONDUITS.

**SECONDARY UNDERGROUND
ELECTRIC CONDUIT BANK DETAIL**

(C) N.T.S.

PRELIMINARY - NOT FOR CONSTRUCTION

REV	DATE	DESCRIPTION
1	04.26.16	LEVEL II APPLICATION



PROJECT	91 COVE ST PORTLAND, MAINE
SHEET TITLE	DETAILS
CLIENT	AAA NORTHERN NEW ENGLAND

STANTEC CONSULTING SERVICES INC.	
482 PAYNE ROAD SCARBOROUGH, MAINE 04074 WWW.STANTEC.COM	
DRAWN: DED	DATE: MAR 2016
DESIGNED: SRB	SCALE: AS NOTED
CHECKED: SRB	JOB NO. 195350347
FILE NAME: 195350347-DETAILS	
SHEET	C-4