

ELECTRICAL PERMIT

City of Portland, Me.




I, the undersigned hereby applies for a permit to make electrical installations in accordance with the laws of Maine, the City of Portland Electrical Ordinance, the National Electrical Code and the following specifications:

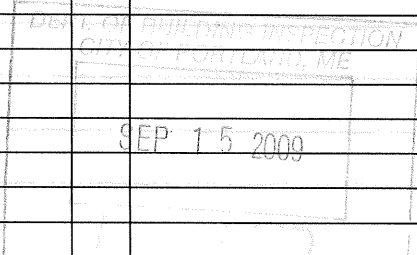
Date 9/15/09
 Permit # 2009 4536
 CBL# 608 A006

LOCATION: 11 Plowman St. Bayside Trail METER MAKE & # _____
 CMP ACCOUNT # 441-1830658-001 OWNER City of Portland
 TENANT _____ PHONE # _____

| | | | | | | TOTAL EACH FEE | |
|------------------------------|--------------|------------------|--|---------------------------------|---|------------------|-------|
| OUTLETS | | Receptacles | | Switches | | Smoke Detector | .20 |
| FIXTURES | | Incandescent | | Fluorescent | | Strips | .20 |
| SERVICES | | Overhead | | Underground | 1 | TTL AMPS <800 | 15.00 |
| | | Overhead | | Underground | | >800 | 25.00 |
| Temporary Service | | Overhead | | Underground | | TTL AMPS | 25.00 |
| | | | | | | | 25.00 |
| METERS | | (number of) | | | | | 1.00 |
| MOTORS | | (number of) | | | | | 2.00 |
| RESID/COM | | Electric units | | | | | 1.00 |
| HEATING | | oil/gas units | | Interior | | Exterior | 5.00 |
| APPLIANCES | | Ranges | | Cook Tops | | Wall Ovens | 2.00 |
| | | Insta-Hot | | Water heaters | | Fans | 2.00 |
| | | Dryers | | Disposals | | Dishwasher | 2.00 |
| | | Compactors | | Spa | | Washing Machine | 2.00 |
| MISC. (number of) | 31 | Others (denote) | | <u>LED FIXTURES & Poles</u> | | | 2.00 |
| | | Air Cond/win | | | | | 3.00 |
| | | Air Cond/cent | | | | Pools | 10.00 |
| | | HVAC | | EMS | | Thermostat | 5.00 |
| | | Signs | | | | | 10.00 |
| | | Alarms/res | | | | | 5.00 |
| | | Alarms/com | | | | | 15.00 |
| | | Heavy Duty(CRKT) | | | | | 2.00 |
| | | Circus/Carnv | | | | | 25.00 |
| | | Alterations | | | | | 5.00 |
| | | Fire Repairs | | | | | 15.00 |
| | | E Lights | | | | | 1.00 |
| | E Generators | | | | | 20.00 | |
| PANELS | | Service | | Remote | | Main | 4.00 |
| TRANSFORMER | | 0-25 Kva | | | | | 5.00 |
| | | 25-200 Kva | | | | | 8.00 |
| | | Over 200 Kva | | | | | 10.00 |
| | | | | | | TOTAL AMOUNT DUE | |
| MINIMUM FEE/COMMERCIAL 55.00 | | | | | | MINIMUM FEE | 45.00 |

CONTRACTORS NAME Enterprise Electric, Inc. MASTER LIC. # MC60017745
 ADDRESS 46 Capital Ave, Lisbon Falls, ME 04252 LIMITED LIC. # _____
 TELEPHONE 353.2697

SIGNATURE OF CONTRACTOR 
 White Copy Office Yellow Copy - Applicant



00
700

ELECTRICAL PERMIT

City of Portland, Me.



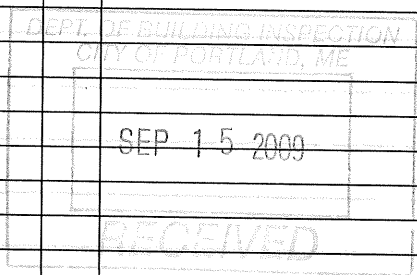
To the Chief Electrical Inspector, Portland Maine:
 The undersigned hereby applies for a permit to make electrical installations
 in accordance with the laws of Maine, the City of Portland Electrical Ordinance,
 National Electrical Code and the following specifications:

Date 9/12/09
 Permit # 2009 4537
 CBL# 0263008

LOCATION: 66-68 130 Chestnut St. Bayside Trail METER MAKE & # _____
 CMP ACCOUNT # 441-1830643-001 OWNER City of Portland
 TENANT _____ PHONE # _____

TOTAL EACH FEE

| OUTLETS | Receptacles | Switches | Smoke Detector | | |
|------------------------------|-----------------|---------------------------------|------------------|-------|-----|
| | | | | .20 | |
| FIXTURES | Incandescent | Fluorescent | Strips | .20 | |
| SERVICES | Overhead | Underground | TTL AMPS <800 | 15.00 | N/C |
| | Overhead | Underground | >800 | 25.00 | |
| Temporary Service | Overhead | Underground | TTL AMPS | 25.00 | |
| METERS | (number of) | | | 1.00 | |
| MOTORS | (number of) | | | 2.00 | |
| RESID/COM | Electric units | | | 1.00 | |
| HEATING | oil/gas units | Interior | Exterior | 5.00 | |
| APPLIANCES | Ranges | Cook Tops | Wall Ovens | 2.00 | |
| | Insta-Hot | Water heaters | Fans | 2.00 | |
| | Dryers | Disposals | Dishwasher | 2.00 | |
| | Compactors | Spa | Washing Machine | 2.00 | |
| | Others (denote) | <u>LED FIXTURES & Poles</u> | | 2.00 | N/C |
| | Air Cond/win | | Pools | 10.00 | |
| | Air Cond/cent | | Thermostat | 5.00 | |
| MISC. (number of) | 31 | EMS | | 10.00 | |
| | | Signs | | 5.00 | |
| | | Alarms/res | | 15.00 | |
| | | Alarms/com | | 2.00 | |
| | | Heavy Duty(CRKT) | | 25.00 | |
| | | Circus/Carnv | | 5.00 | |
| | | Alterations | | 15.00 | |
| | | Fire Repairs | | 1.00 | |
| | | E Lights | | 20.00 | |
| | | E Generators | | | |
| PANELS | Service | Remote | Main | 4.00 | |
| TRANSFORMER | 0-25 Kva | | | 5.00 | |
| | 25-200 Kva | | | 8.00 | |
| | Over 200 Kva | | | 10.00 | |
| | | | TOTAL AMOUNT DUE | | |
| MINIMUM FEE/COMMERCIAL 55.00 | | | MINIMUM FEE | 45.00 | |

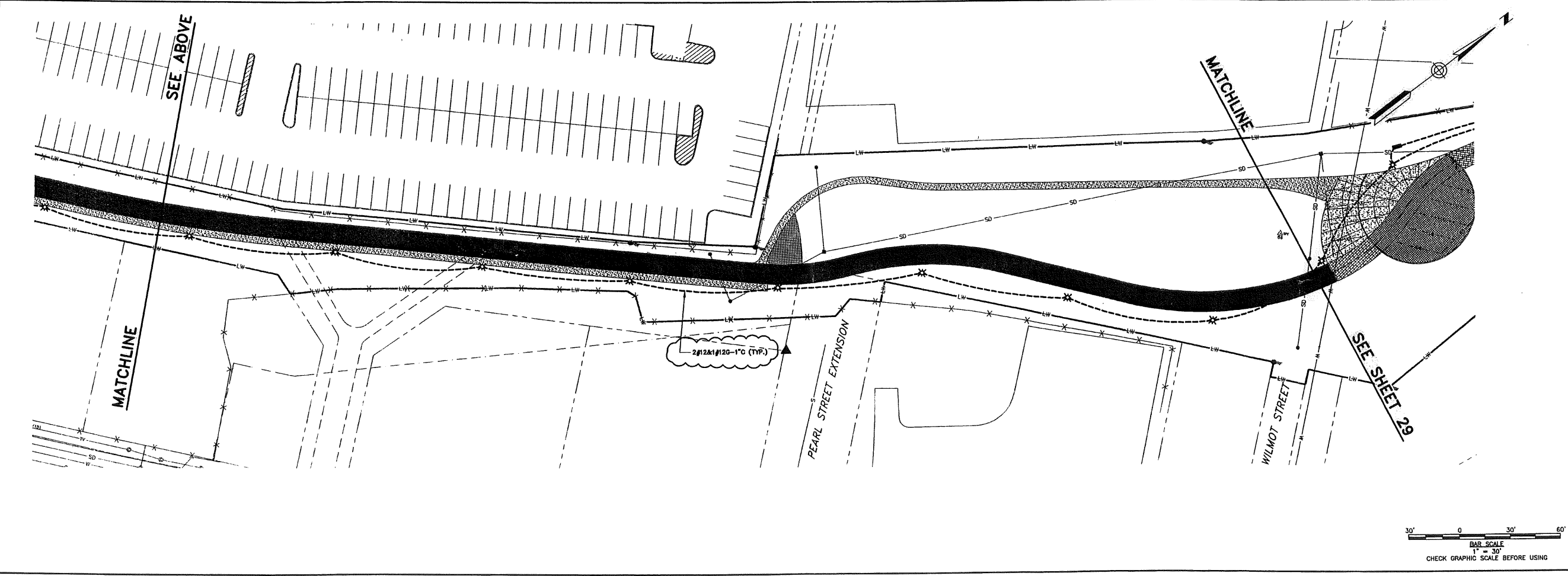
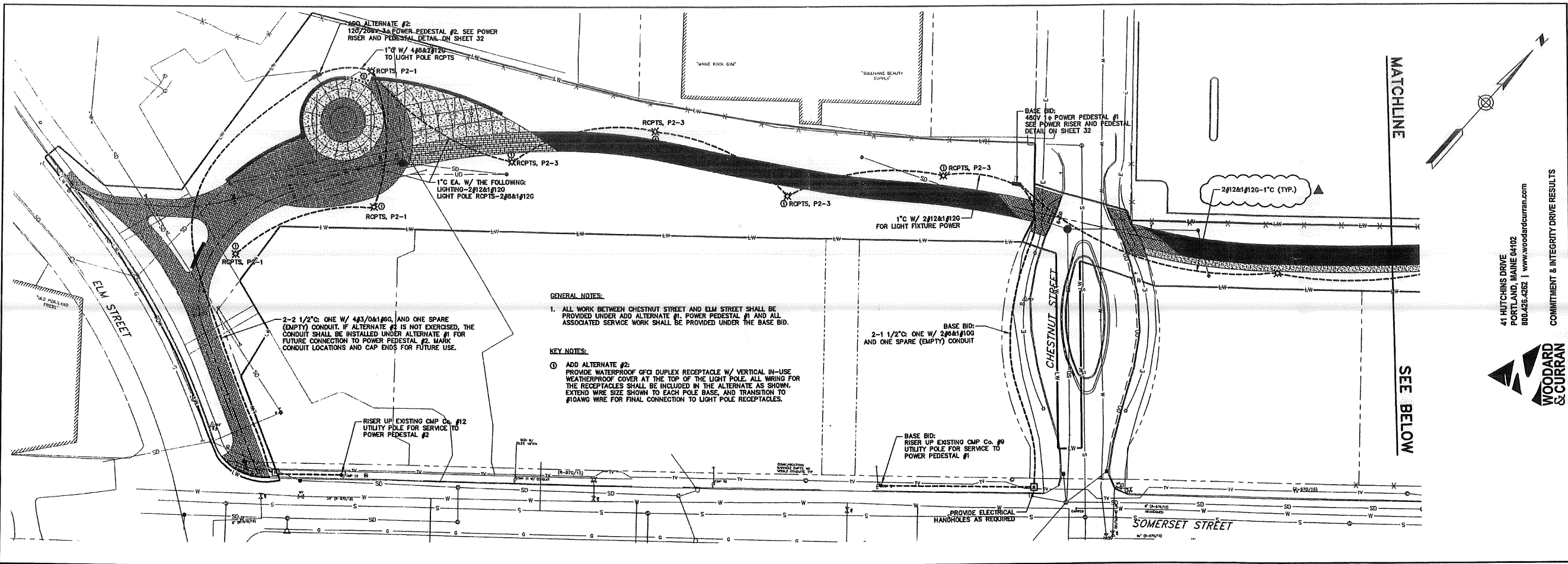


0263008

CONTRACTORS NAME Enterprise Electric, Inc. MASTER LIC. # MC60017745
 ADDRESS 46 Capitol Ave, Lisbon Falls, ME 04252 LIMITED LIC. # _____
 TELEPHONE 353-2697

SIGNATURE OF CONTRACTOR [Signature]
 White Copy - Office Yellow Copy - Applicant

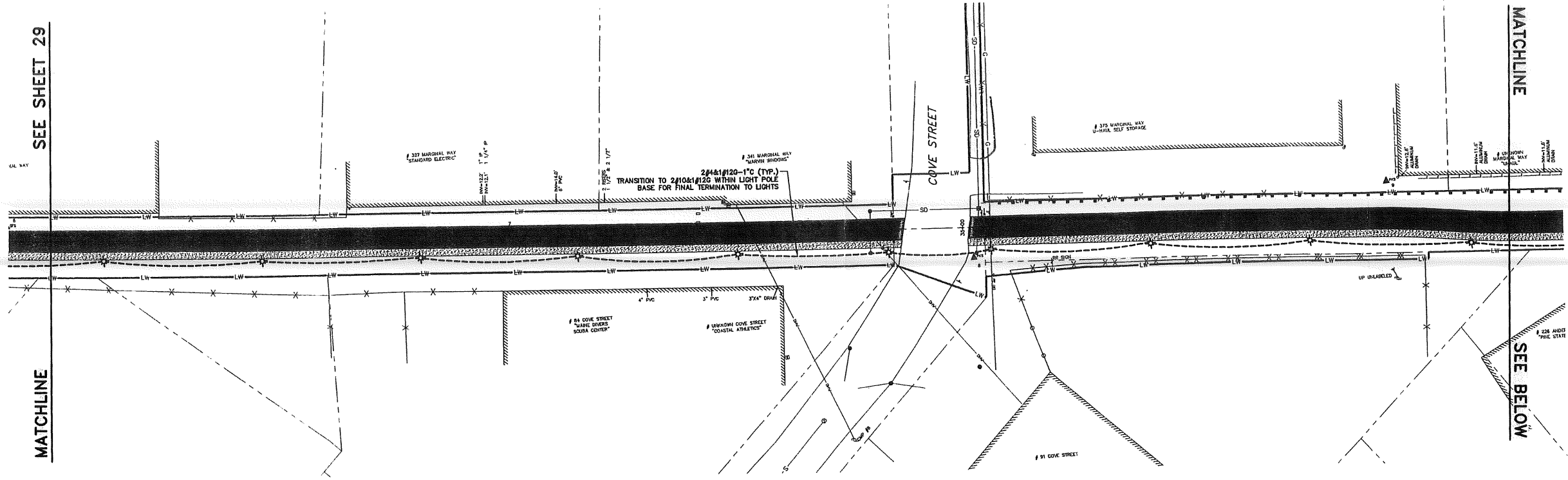
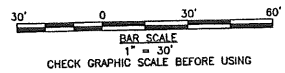
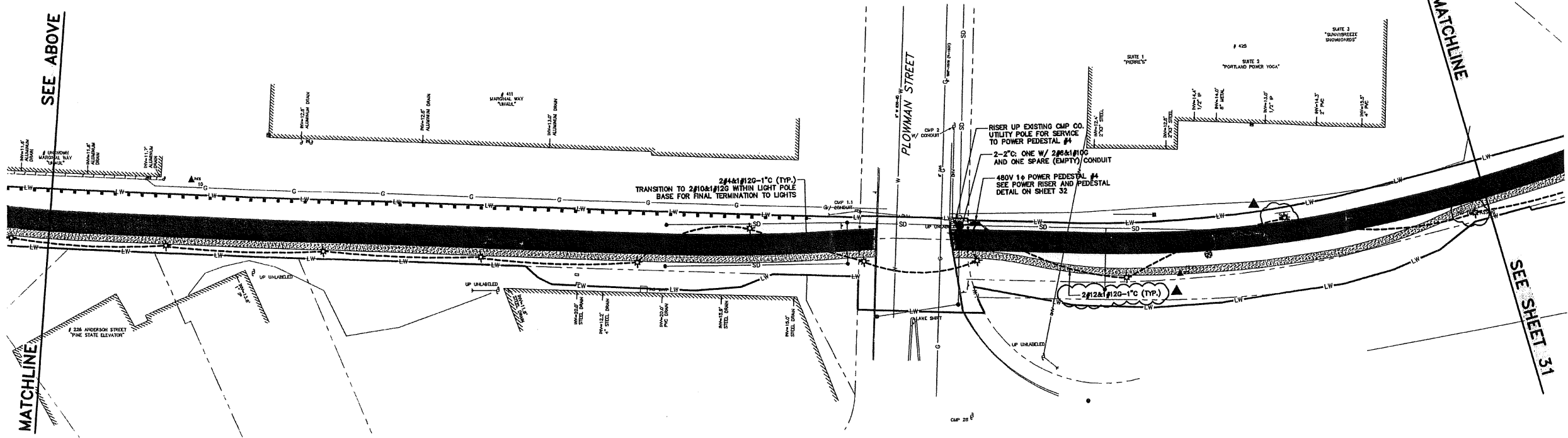
Electrical Drawings



| | | | |
|------------------------------------------------------------------------------------|--|---------------------------------|--|
| LDD PROJECT NAME: | | DRAWING NAME: | |
| 41 HUTCHINS DRIVE PORTLAND, MAINE 04102 800.426.4262 www.woodardcurran.com | | 2039-365-E00A.DWG | |
| COMMITMENT & INTEGRITY DRIVE RESULTS | | FIELD BOOK USED: | |
| WOODARD & CURRAN | | REV. 1 | |
| REFERENCES: | | DATE: 6/12/2009 | |
| DESIGNED BY: | | DESCRIPTION: | |
| DRAWN BY: | | 1 | |
| CHECKED BY: | | REV. 1 | |
| SCALE: | | DATE: 05/22/2009 | |
| AS NOTED | | DATE: 05/22/2009 | |
| DATE: 05/22/2009 | | DATE: 05/22/2009 | |
| CITY OF PORTLAND, MAINE PUBLIC SERVICES DEPARTMENT ENGINEERING SECTION | | BAYSIDE TRAIL ELECTRICAL - 1 | |
| SHEET # 28 OF 33 | | PLAN NUMBER | |

C:\2039-365 City of Portland-General Engineering Services\wp_65 Bayside Trail\DRAWINGS\2039-365-E00A.dwg, Jun 12, 2009 - 2:46pm

Q:\203943 City of Portland-General Engineering Services\Up\55 Bayside Trail\DRAWINGS\20394365-E00A.dwg, Jun 12, 2009 - 2:49pm



41 HUTCHINS DRIVE
 PORTLAND, MAINE 04102
 800.426.4282 | www.woodardcurran.com



COMMITMENT & INTEGRITY DRIVE RESULTS



| | |
|--------------|------------|
| DESIGNED BY: | KRM |
| DRAWN BY: | KRM |
| CHECKED BY: | TMC |
| SCALE: | AS NOTED |
| DATE: | 05/22/2008 |

REFERENCES:
STRIP_65001.dwg

| REV | DESCRIPTION | DATE |
|-----|-------------|-----------|
| 1 | ADDENDUM 1 | 6/12/2009 |

LDD PROJECT NAME:
 DRAWING NAME:
 20394365-E00A.DWG
 FIELD BOOK USED:

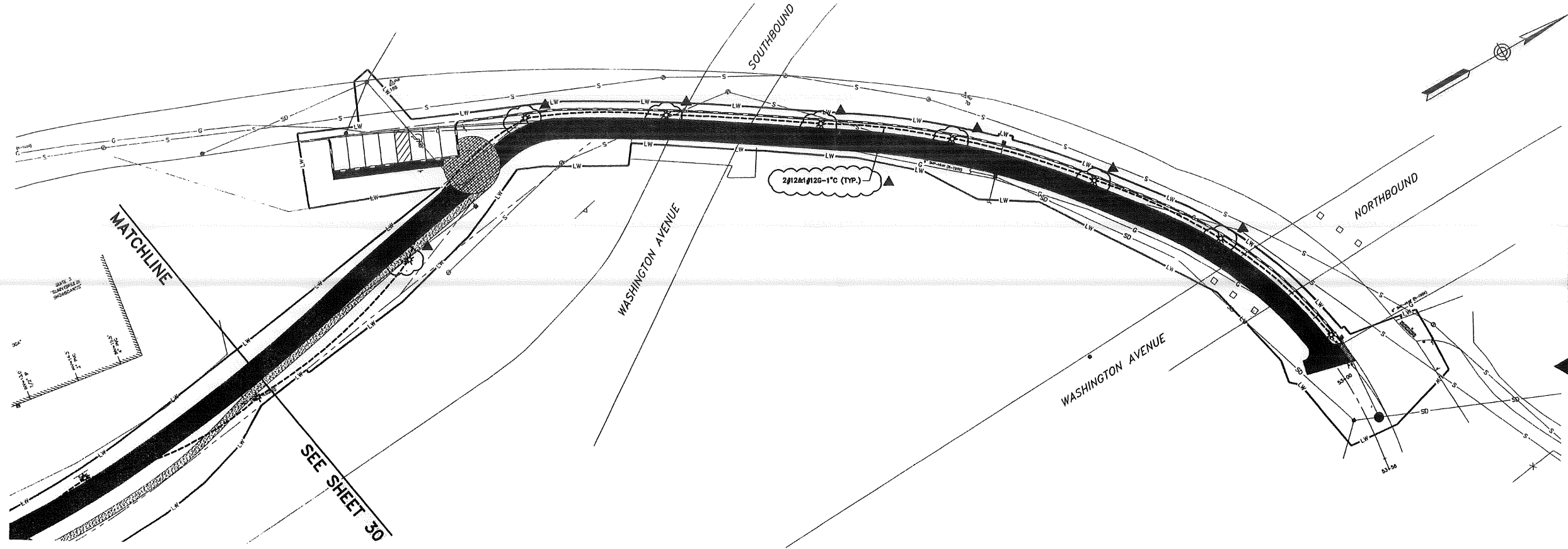
BAYSIDE TRAIL
 ELECTRICAL - 3

CITY OF PORTLAND, MAINE
 PUBLIC SERVICES DEPARTMENT
 ENGINEERING SECTION



SHEET #
 30 OF 33
 PLAN NUMBER

C:\203943 City of Portland-General Engineering Services\p185 Bayside Trail\DRAWINGS\20394365-EDDA.dwg, Jun 12, 2009 - 2:49pm



41 HUTCHINS DRIVE
 PORTLAND, MAINE 04102
 800.426.4262 | www.woodardcurran.com



COMMITMENT & INTEGRITY DRIVE RESULTS

| | |
|--------------|------------|
| DESIGNED BY: | COM |
| DRAWN BY: | COM |
| CHECKED BY: | TMC |
| SCALE: | AS NOTED |
| DATE: | 05/22/2009 |

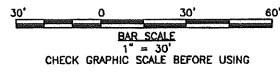


BAYSIDE TRAIL
 ELECTRICAL - 4

CITY OF PORTLAND, MAINE
 PUBLIC SERVICES DEPARTMENT
 ENGINEERING SECTION

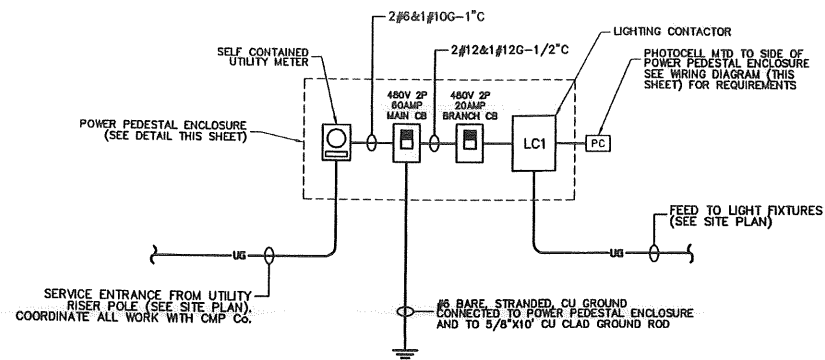


SHEET #
 31 OF 33
 PLAN NUMBER

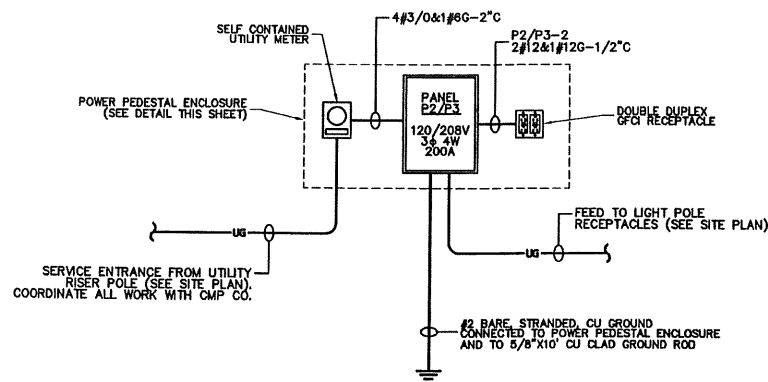


LDD PROJECT NAME:
 DRAWING NAME:
 20394365-EDDA.DWG
 FIELD BOOK USED:

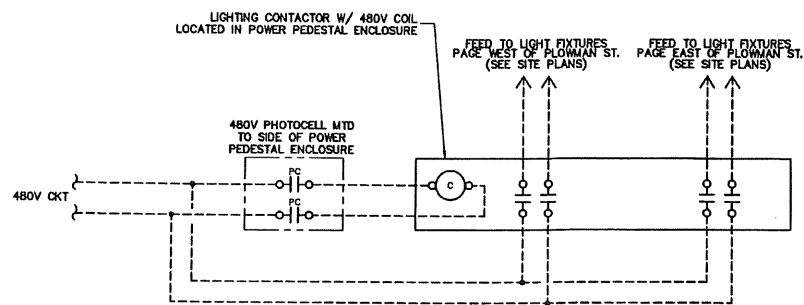
| REV | DESCRIPTION | DATE |
|-------------------------------------------|-------------------------------|-----------|
| 1 <td>ADDENDUM 1 <td>6/12/2009</td> </td> | ADDENDUM 1 <td>6/12/2009</td> | 6/12/2009 |



**POWER PEDESTAL #1 AND #4
POWER RISER DIAGRAM**
SCALE: NO SCALE

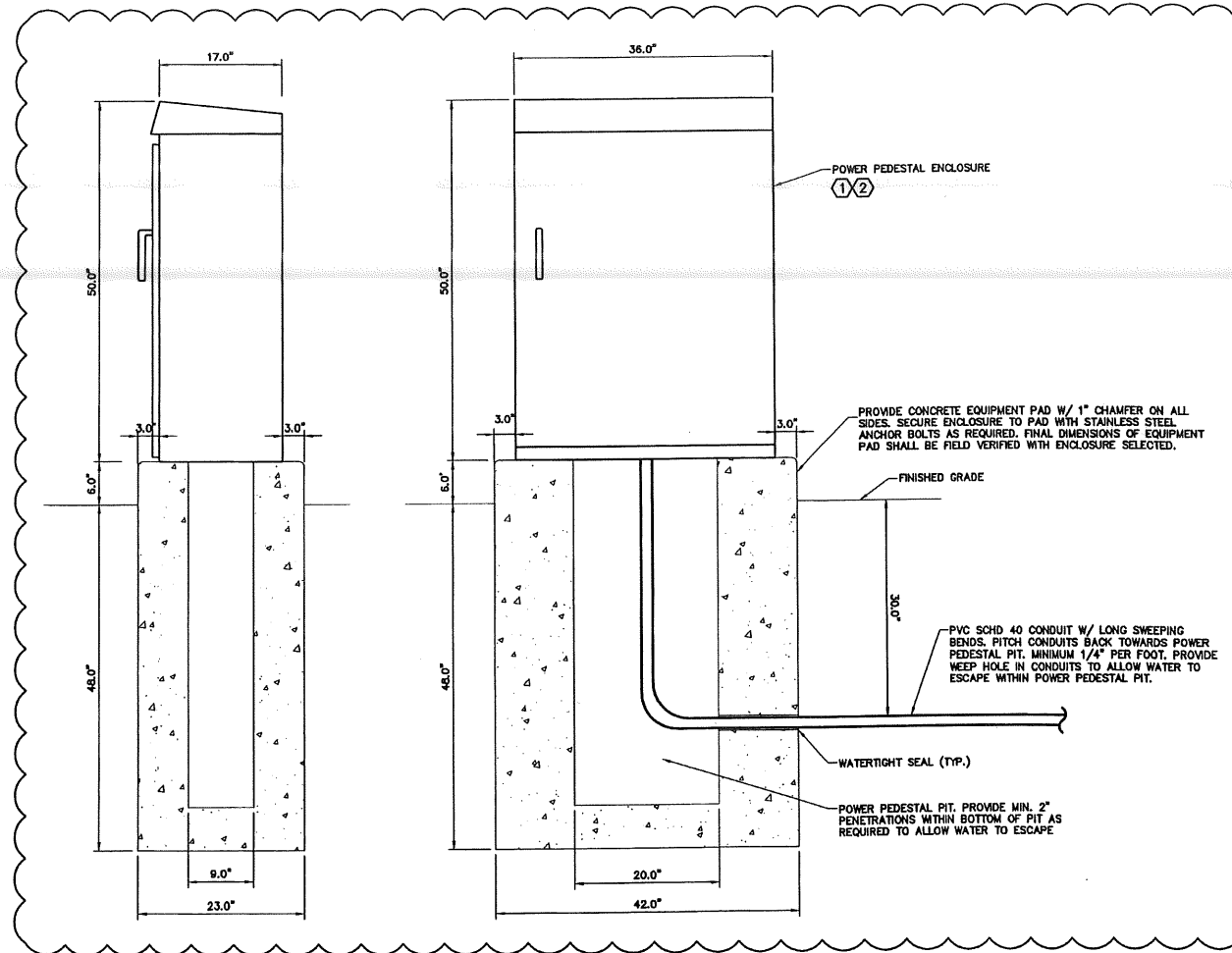


**POWER PEDESTAL #2 & #3
POWER RISER DIAGRAM**
SCALE: NO SCALE

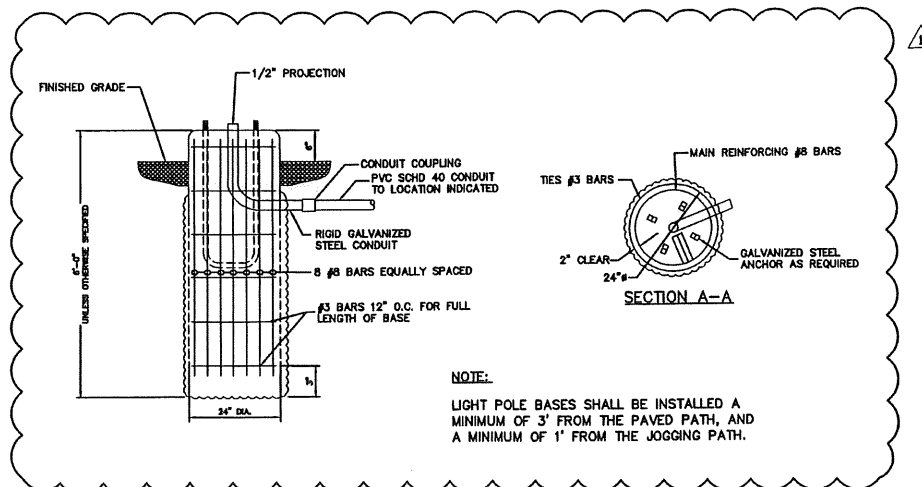


**TYPICAL PHOTOCELL AND LIGHTING CONTACTOR
WIRING DIAGRAM**
SCALE: NO SCALE

- NOTES:**
1. PROVIDE LOCKABLE NEMA 3R ALUMINUM ENCLOSURE WITH INTEGRAL BACKPANEL EQUAL TO APX MODEL #APX503617, OR APPROVED EQUAL.
 2. ALL WIRING & CABLES TO BE INSTALLED WITHIN THE EQUIPMENT ENCLOSURE SHALL BE TAGGED APPROPRIATELY TO DESIGNATE INTENDED USE AND CONNECTED LOAD. ALL CABLES SHALL BE BUNDED NEATLY, TIE WRAPPED, DRESSED APPROPRIATELY AND SHALL RUN PARALLEL AND PERPENDICULAR AT 90 DEGREE ANGLES. CABLES SHALL BE SUPPORTED VIA WIRE BUNDLE STRAPS AND HEAVY DUTY CABLE TIE MOUNTS, WHICH UTILIZE A SCREW MOUNTING METHOD TO SUPPORT TO THE BACK PANEL (ADHESIVE BACK SUPPORTS ARE NOT ACCEPTABLE). WIRE BUNDLE STRAPS SHALL BE SIMILAR TO PANDUIT WBS8 SERIES, AND CABLE TIE MOUNTS SHALL BE SIMILAR TO PANDUIT TMS SERIES (OR APPROVED EQUAL).
 3. DETAIL IS TYPICAL FOR POWER PEDESTALS 1, 2, 3, & 4.



TYPICAL POWER PEDESTAL ENCLOSURE DETAIL
SCALE: NO SCALE



LIGHT POLE BASE DETAIL
SCALE: NO SCALE

44 HUTCHINS DRIVE
PORTLAND, MAINE 04102
800.425.4252 | www.woodardcurran.com



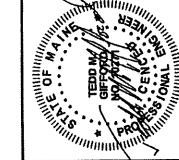
COMMITMENT & INTEGRITY DRIVE RESULTS

| | |
|-------------------|--------------------|
| LDD PROJECT NAME: | |
| DRAWING NAME: | 202394365-EO06.DWG |
| FIELD BOOK USED: | |

| REV | DESCRIPTION | DATE |
|-----|-------------|-----------|
| 1 | ADDITION 1 | 6/12/2009 |

REFERENCES:
STRIP_#63001.dwg

| | |
|--------------|------------|
| DESIGNED BY: | NRM |
| DRAWN BY: | NRM |
| CHECKED BY: | TMG |
| SCALE: | AS NOTED |
| DATE: | 06/12/2009 |



BAYSIDE TRAIL
ELECTRICAL DETAILS - 1

CITY OF PORTLAND, MAINE
PUBLIC SERVICES DEPARTMENT
ENGINEERING SECTION



SHEET #
32 OF 33
PLAN NUMBER

05/20/2013 City of Portland - General Engineering Services/Map 165 Bayside Trail/VRAMN05/202394365-EO06.dwg, Jun 12, 2009 - 3:05pm

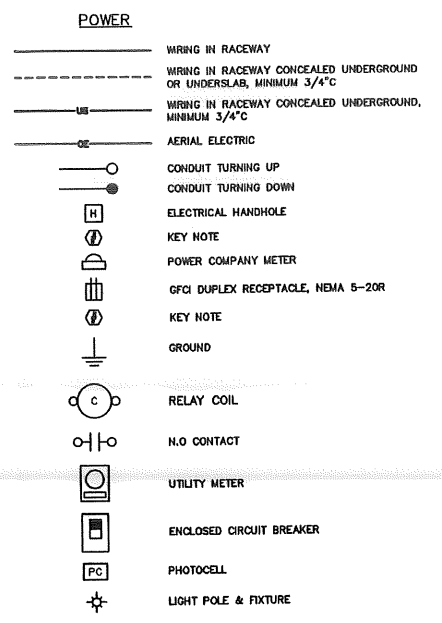
| LIGHTING FIXTURE SCHEDULE | | | | | | | | |
|-------------------------------------------------------------------------------------------------------------------------------------|--------------|------------------------------------------------------------------------------------------------------------------------|-----------|-----------|----------|---------|------------------------|-------------------------------------------------------------------------------|
| ALL FIXTURES SHALL BE FURNISHED COMPLETE WITH ALL HARDWARE, LAMPS, HANGERS, FITTINGS, ETC., FOR A COMPLETE AND PROPER INSTALLATION. | | | | | | | | |
| TYPE | MANUFACTURER | CATALOG NUMBER | LAMP TYPE | LAMP WATT | LAMP NO. | VOLTAGE | MTG. | REMARKS/RECOMMENDATIONS |
| ☼ | KIM LIGHTING | POLE MOUNTED LED FIXTURE W/ TYPE II DISTRIBUTION FIXTURE: 15A-1WPESE2-15X180-153TL POLE: HAPCO 3RA-16B4-4-CUSTOM | LED | 88 | 60 | 480 | 4" ROUND ALUMINUM POLE | FIXTURE AND POLE SHALL BE PAINTED GREEN, RAL #6018. MOUNT FIXTURE 16"-0" AFD. |

LIGHT FIXTURE SCHEDULE
SCALE: NO SCALE

| DIRECTORY | BRKR | POLE | CKT # | KVA | KVA LOADS | | | KVA | CKT # | POLE | BRKR | DIRECTORY |
|------------------|------|------|-------|---------|------------|------|------|---------------------|-----------------------------|------|------------------------------|-----------|
| | | | | | A | B | C | | | | | |
| LIGHT POLE RCPTS | 20 | 1 | 1 | 0.64 | 0.80 | | 0.36 | 2 | 1 | 20 | INTERIOR POWER PEDESTAL GFCI | |
| LIGHT POLE RCPTS | 20 | 1 | 3 | 0.72 | | 0.72 | | 4 | 1 | 20 | SPARE | |
| SPARE | 20 | 1 | 6 | | | 0.00 | | 6 | 1 | 20 | SPARE | |
| SPARE | 20 | 1 | 7 | | 0.00 | | | 8 | 1 | 20 | SPARE | |
| SPARE | 20 | 1 | 9 | | 0.00 | | | 10 | 1 | 20 | SPARE | |
| SPARE | 20 | 1 | 11 | | 0.00 | | | 12 | 1 | 20 | SPARE | |
| SPACE | | | 13 | | 0.00 | | | 14 | | | SPACE | |
| SPACE | | | 16 | | 0.00 | | | 16 | | | SPACE | |
| SPACE | | | 17 | | | 0.00 | | 18 | | | SPACE | |
| SPACE | | | 19 | | 0.00 | | | 20 | | | SPACE | |
| SPACE | | | 21 | | 0.00 | | | 22 | | | SPACE | |
| SPACE | | | 23 | | | 0.00 | | 24 | | | SPACE | |
| SPACE | | | 26 | | 0.00 | | | 26 | | | SPACE | |
| SPACE | | | 27 | | 0.00 | | | 28 | | | SPACE | |
| SPACE | | | 29 | | | 0.00 | | 30 | | | SPACE | |
| SUBTOTAL | | | | 0.80 | 0.72 | 0.00 | | SUBTOTAL | | | | |
| VOLTAGE: | | | | 120/208 | TOTAL KVA | | | 1.62 | PANEL NAME: P2 | | | |
| MAIN BREAKER: | | | | 200 | TOTAL AMPS | | | 5 | LOCATION: POWER PEDESTAL #2 | | | |
| BUSES: | | | | 225 | | | | MOUNTING: SURFACE | | | | |
| PH & WIRES: | | | | 3P 4W | | | | AIC RATING: 22 KAIC | | | | |
| NOTES: | | | | | | | | | | | | |

| DIRECTORY | BRKR | POLE | CKT # | KVA | KVA LOADS | | | KVA | CKT # | POLE | BRKR | DIRECTORY |
|------------------|------|------|-------|---------|------------|------|------|---------------------|-----------------------------|------|------------------------------|-----------|
| | | | | | A | B | C | | | | | |
| LIGHT POLE RCPTS | 20 | 1 | 1 | 0.72 | 1.08 | | 0.36 | 2 | 1 | 20 | INTERIOR POWER PEDESTAL GFCI | |
| SPARE | 20 | 1 | 3 | | 0.00 | | | 4 | 1 | 20 | SPARE | |
| SPARE | 20 | 1 | 6 | | | 0.00 | | 6 | 1 | 20 | SPARE | |
| SPARE | 20 | 1 | 7 | | 0.00 | | | 8 | 1 | 20 | SPARE | |
| SPARE | 20 | 1 | 9 | | 0.00 | | | 10 | 1 | 20 | SPARE | |
| SPARE | 20 | 1 | 11 | | 0.00 | | | 12 | 1 | 20 | SPARE | |
| SPACE | | | 13 | | 0.00 | | | 14 | | | SPACE | |
| SPACE | | | 16 | | 0.00 | | | 16 | | | SPACE | |
| SPACE | | | 17 | | | 0.00 | | 18 | | | SPACE | |
| SPACE | | | 19 | | 0.00 | | | 20 | | | SPACE | |
| SPACE | | | 21 | | 0.00 | | | 22 | | | SPACE | |
| SPACE | | | 23 | | | 0.00 | | 24 | | | SPACE | |
| SPACE | | | 26 | | 0.00 | | | 26 | | | SPACE | |
| SPACE | | | 27 | | 0.00 | | | 28 | | | SPACE | |
| SPACE | | | 29 | | | 0.00 | | 30 | | | SPACE | |
| SUBTOTAL | | | | 1.08 | 0.00 | 0.00 | | SUBTOTAL | | | | |
| VOLTAGE: | | | | 120/208 | TOTAL KVA | | | 1.08 | PANEL NAME: P3 | | | |
| MAIN BREAKER: | | | | 200 | TOTAL AMPS | | | 3 | LOCATION: POWER PEDESTAL #3 | | | |
| BUSES: | | | | 225 | | | | MOUNTING: SURFACE | | | | |
| PH & WIRES: | | | | 3P 4W | | | | AIC RATING: 22 KAIC | | | | |
| NOTES: | | | | | | | | | | | | |

PANEL SCHEDULES
SCALE: NO SCALE

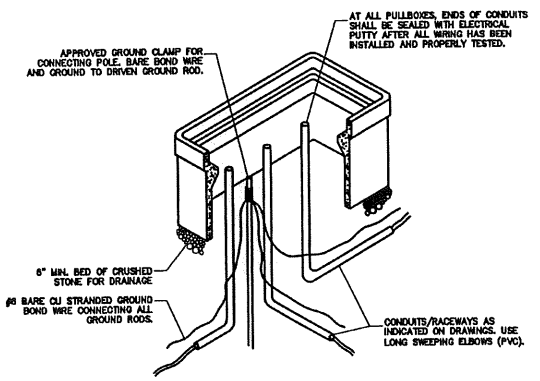


ABBREVIATIONS

| | |
|--------|------------------------------------|
| AFF | ABOVE FINISHED FLOOR |
| AFG | ABOVE FINISHED GRADE |
| AHJ | AUTHORITY HAVING JURISDICTION |
| AIC | AMPERE INTERRUPT CAPACITY |
| CKT | CIRCUIT |
| CL | CENTERLINE |
| EA | EACH |
| E.C. | ELECTRICAL CONTRACTOR |
| EXG. | EXISTING |
| F.W.E. | FURNISHED WITH EQUIPMENT |
| GEN | GENERATOR |
| GFCI | GROUND FAULT CIRCUIT INTERRUPTER |
| GND | GROUND |
| MCB | MAIN CIRCUIT BREAKER |
| MTD | MOUNTED |
| NEC | NATIONAL ELECTRIC CODE |
| RGS | RIGID STEEL CONDUIT |
| T-STAT | THERMOSTAT |
| TVSS | TRANSIENT VOLTAGE SURGE SUPPRESSOR |
| TYP | TYPICAL |
| UG | UNDERGROUND |
| WP | WEATHER PROOF |
| XFMR | TRANSFORMER |
| XP | EXPLOSION PROOF |

ELECTRICAL LEGEND
SCALE: NO SCALE

- PULLBOX NOTES:**
- CONDUITS NOT TERMINATING IN OR AT THE PULLBOXES SHALL NOT RUN THROUGH PULLBOXES, UNLESS REQUIRED FOR PULLING.
 - FINAL DIMENSIONS OF PULL BOXES SHALL BE AS VERIFIED IN THE FIELD AND SHALL BE IN ACCORDANCE WITH NEC.
 - PULLBOX COVERS SHALL BE CAST IRON, PROVIDE EXTENSION AS REQUIRED.
 - PULLBOXES SHALL BE PRECAST, AND SHALL BE RHW H20 RATED.



ELECTRICAL HANDHOLE DETAIL
SCALE: NO SCALE

44 HUTCHINS DRIVE
PORTLAND, MAINE 04102
800.425.4252 | www.woodardcurran.com



COMMITMENT & INTEGRITY DRIVE RESULTS

LDD PROJECT NAME: _____

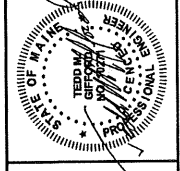
DRAWING NAME: 2039A365-ED06.DWG

FIELD BOOK USED: _____

| REV | DESCRIPTION | DATE |
|-----|-------------|-----------|
| 1 | ADDITION 1 | 6/12/2009 |

REFERENCES:
STRUC_J63001.dwg

| | | | | |
|------------------|---------------|-----------------|-----------------|------------------|
| DESIGNED BY: KRM | DRAWN BY: KRM | CHECKED BY: TWG | SCALE: AS NOTED | DATE: 05/22/2009 |
|------------------|---------------|-----------------|-----------------|------------------|



BAYSIDE TRAIL
ELECTRICAL DETAILS - 2

CITY OF PORTLAND, MAINE
PUBLIC SERVICES DEPARTMENT
ENGINEERING SECTION



SHEET #
33 of 33
PLAN NUMBER