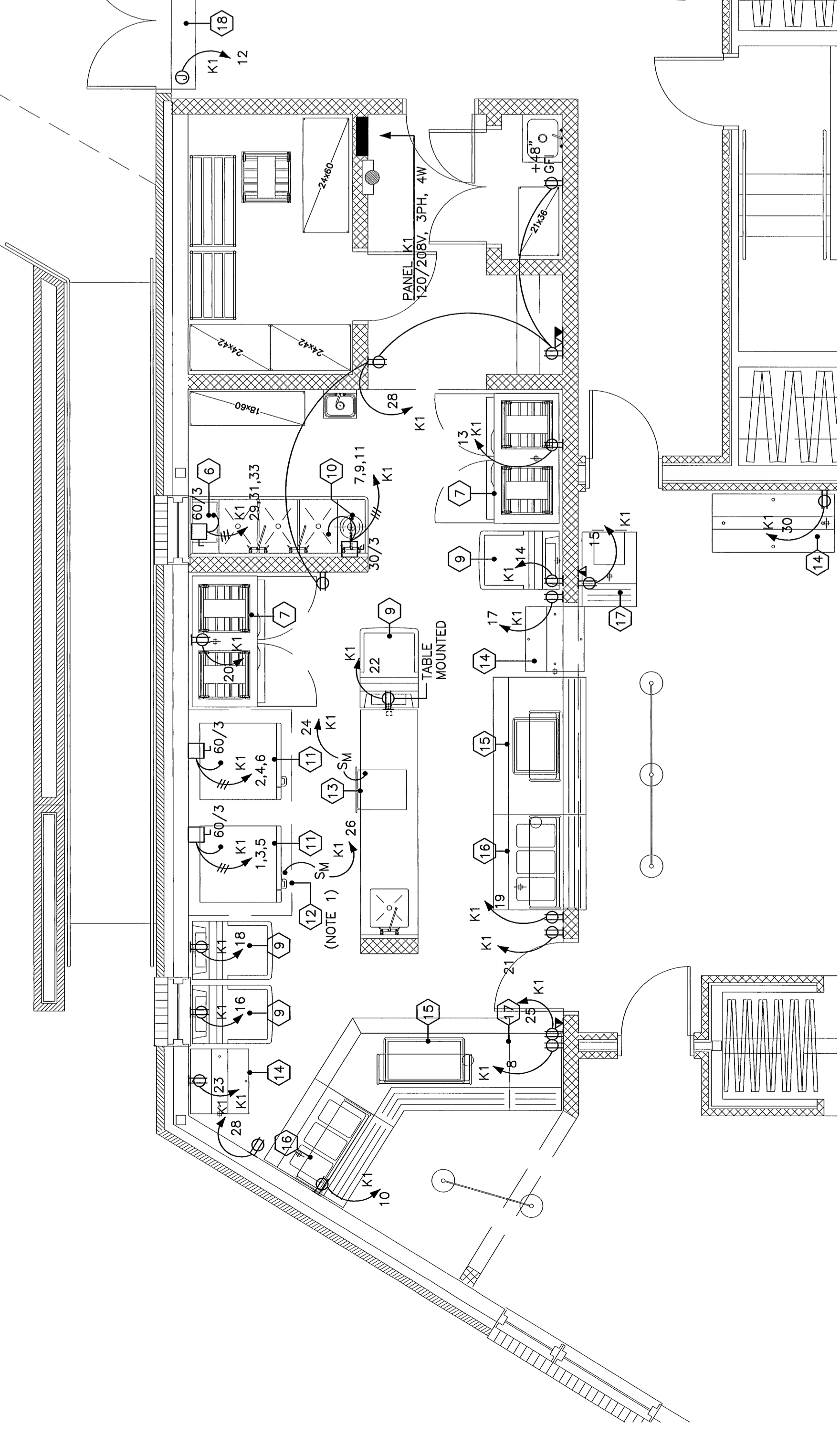


POWER PLAN NOTES:

1. VERIFY EXACT LOCATION OF ALL MECHANICAL EQUIPMENT PRIOR TO INSTALLATION.
2. INTERLOCK SHUT TRIP CIRCUIT BREAKERS SERVING CIRCUITS TO ITEMS BELOW KITCHEN EXHAUST HOOD WITH HOOD FIRE SUPPRESSION SYSTEM TO DEACTIVATE CIRCUITS UPON DISCHARGE OF SUPPRESSION SYSTEM.
3. WHERE INDICATED, DOORS SHALL BE EQUIPPED WITH AN ELECTRIC LOCK UNDER ALT. BID #6. PROVIDE A 120V CIRCUIT CONNECTION TO DETECTOR ALL UNDER ALT. BID #6. SEE SHEET EA.4 FOR WIRING OF SECURITY/DOOR ACCESS DEVICES. TEMPERATURE CONTROL PANEL PRIOR TO ROUGH-IN OF ELEC/DATA WIRING.
4. PROVIDE WIRING AND CONNECTIONS BETWEEN EXHAUST FAN ON ROOF AND EXHAUST HOOD CONTROL SWITCH. CONTROL SWITCH TO BE SUPPLIED UNDER BID #15, AND INSTALLED UNDER BID #19.



GROUND FLOOR SOUTH POWER PLAN
1/8" = 1'-0"

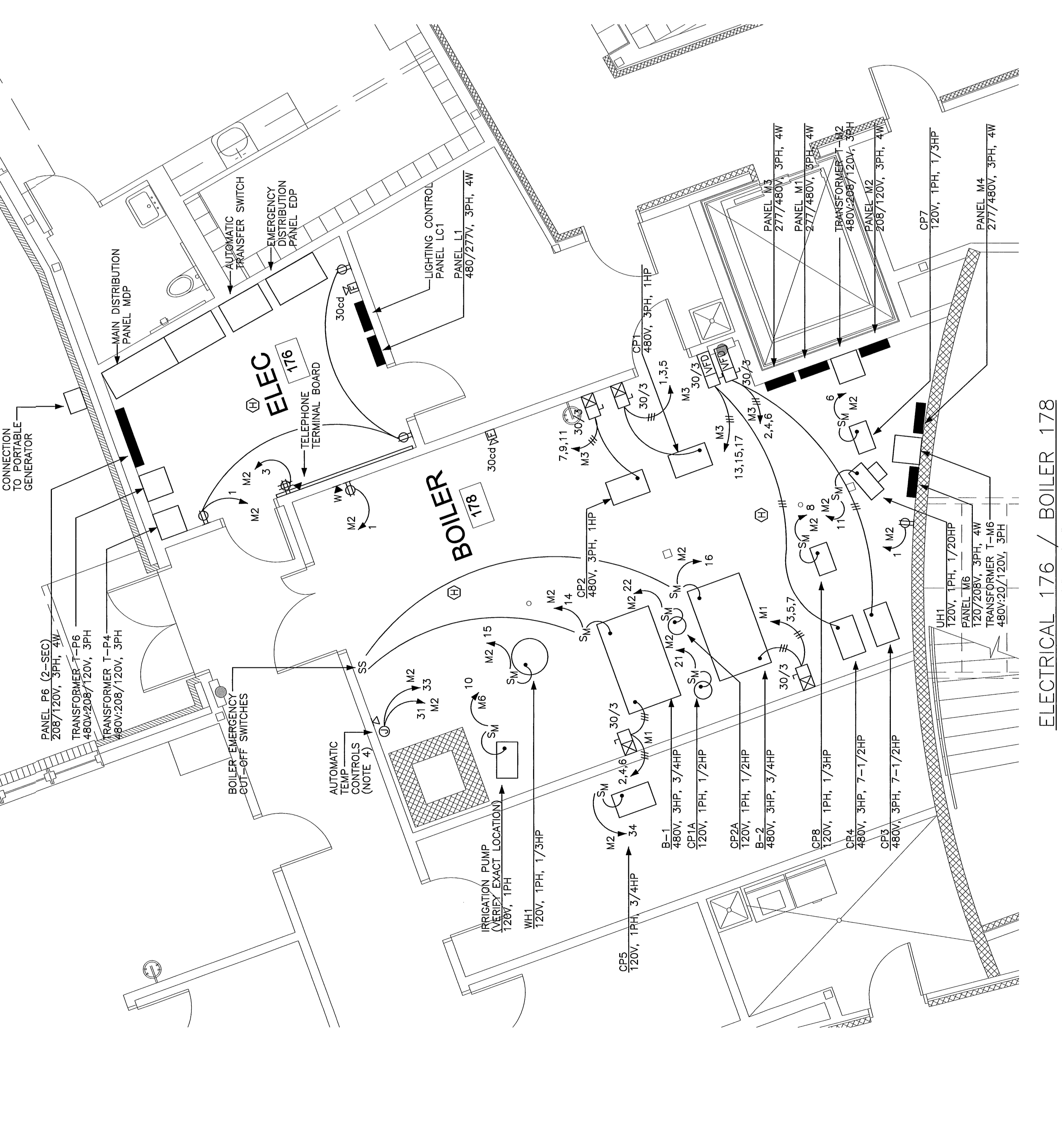


KITCHEN 321
1/4" = 1'-0"

- KITCHEN NOTES:**
1. INTERLOCK SHUT TRIP CIRCUIT BREAKERS SERVING CIRCUITS TO ITEMS BELOW KITCHEN EXHAUST HOOD WITH HOOD FIRE SUPPRESSION SYSTEM TO DEACTIVATE CIRCUITS UPON DISCHARGE OF SUPPRESSION SYSTEM.
 2. COORDINATE ALL ELECTRICAL CONNECTION TYPES AND REQUIRED HEIGHTS WITH FOOD SERVICE PLANS.
 3. THE NATIONAL ELECTRICAL CODE.

KITCHEN EQUIPMENT SCHEDULE

NO.	QTY	DESCRIPTION	AMP	VOLTS	PH	DISCONNECT	TRIP	CRUISE	SIZE
1	1	POT SINK	15	120	1	X	1	1	1/2" x 1/2"
2	1	STOVE	15	120	1	X	1	1	1/2" x 1/2"
3	1	REF	15	120	1	X	1	1	1/2" x 1/2"
4	1	DISPOSER WITH CONTROLS	15	120	1	X	1	1	1/2" x 1/2"
5	1	EXHAUST FAN	15	120	1	X	1	1	1/2" x 1/2"
6	1	EXHAUST W/ WIRE SUPP	25	0	3	X	1	1	1/2" x 1/2"
7	1	WATER SINK	15	120	1	X	1	1	1/2" x 1/2"
8	1	WATER SINK	15	120	1	X	1	1	1/2" x 1/2"
9	1	WATER SINK	15	120	1	X	1	1	1/2" x 1/2"
10	1	WATER SINK	15	120	1	X	1	1	1/2" x 1/2"
11	1	WATER SINK	15	120	1	X	1	1	1/2" x 1/2"
12	1	WATER SINK	15	120	1	X	1	1	1/2" x 1/2"
13	1	WATER SINK	15	120	1	X	1	1	1/2" x 1/2"
14	1	WATER SINK	15	120	1	X	1	1	1/2" x 1/2"
15	1	WATER SINK	15	120	1	X	1	1	1/2" x 1/2"
16	1	WATER SINK	15	120	1	X	1	1	1/2" x 1/2"
17	1	WATER SINK	15	120	1	X	1	1	1/2" x 1/2"
18	1	WATER SINK	15	120	1	X	1	1	1/2" x 1/2"
19	1	WATER SINK	15	120	1	X	1	1	1/2" x 1/2"
20	1	WATER SINK	15	120	1	X	1	1	1/2" x 1/2"
21	1	WATER SINK	15	120	1	X	1	1	1/2" x 1/2"
22	1	WATER SINK	15	120	1	X	1	1	1/2" x 1/2"
23	1	WATER SINK	15	120	1	X	1	1	1/2" x 1/2"
24	1	WATER SINK	15	120	1	X	1	1	1/2" x 1/2"
25	1	WATER SINK	15	120	1	X	1	1	1/2" x 1/2"
26	1	WATER SINK	15	120	1	X	1	1	1/2" x 1/2"
27	1	WATER SINK	15	120	1	X	1	1	1/2" x 1/2"
28	1	WATER SINK	15	120	1	X	1	1	1/2" x 1/2"
29	1	WATER SINK	15	120	1	X	1	1	1/2" x 1/2"
30	1	WATER SINK	15	120	1	X	1	1	1/2" x 1/2"
31	1	WATER SINK	15	120	1	X	1	1	1/2" x 1/2"
32	1	WATER SINK	15	120	1	X	1	1	1/2" x 1/2"
33	1	WATER SINK	15	120	1	X	1	1	1/2" x 1/2"
34	1	WATER SINK	15	120	1	X	1	1	1/2" x 1/2"
35	1	WATER SINK	15	120	1	X	1	1	1/2" x 1/2"
36	1	WATER SINK	15	120	1	X	1	1	1/2" x 1/2"
37	1	WATER SINK	15	120	1	X	1	1	1/2" x 1/2"
38	1	WATER SINK	15	120	1	X	1	1	1/2" x 1/2"
39	1	WATER SINK	15	120	1	X	1	1	1/2" x 1/2"
40	1	WATER SINK	15	120	1	X	1	1	1/2" x 1/2"



ELECTRICAL 176 / BOILER 178
1/4" = 1'-0"

East End Elementary School
Portland Public Schools
Portland, Maine

Revise:

Lawrence C. Bartlett
Architects

Proj. No.: 100
Date: Aug 28, 2004
Scale: 1/8" = 1'-0"
Drawn by: Jc
Checked by: Jc
Drawing Title: Ground Floor South Power Plan

Consultants:
Civil Engineer: Deluca-Hoffman Associates
Landscape Architect: Carroll Associates
Structural Engineer: Pinkham & Greer
Mechanical Engineer: Bennett Engineering
Electrical Engineer: Bartlett Design
Interior Design: T. J. O'Connell
Fire Consulting: Fire Solutions

10 Oakleaf Street
Portland, ME 04103
Phone: 207.762.1100
Fax: 207.762.1105
Email: eastend@eastend.com