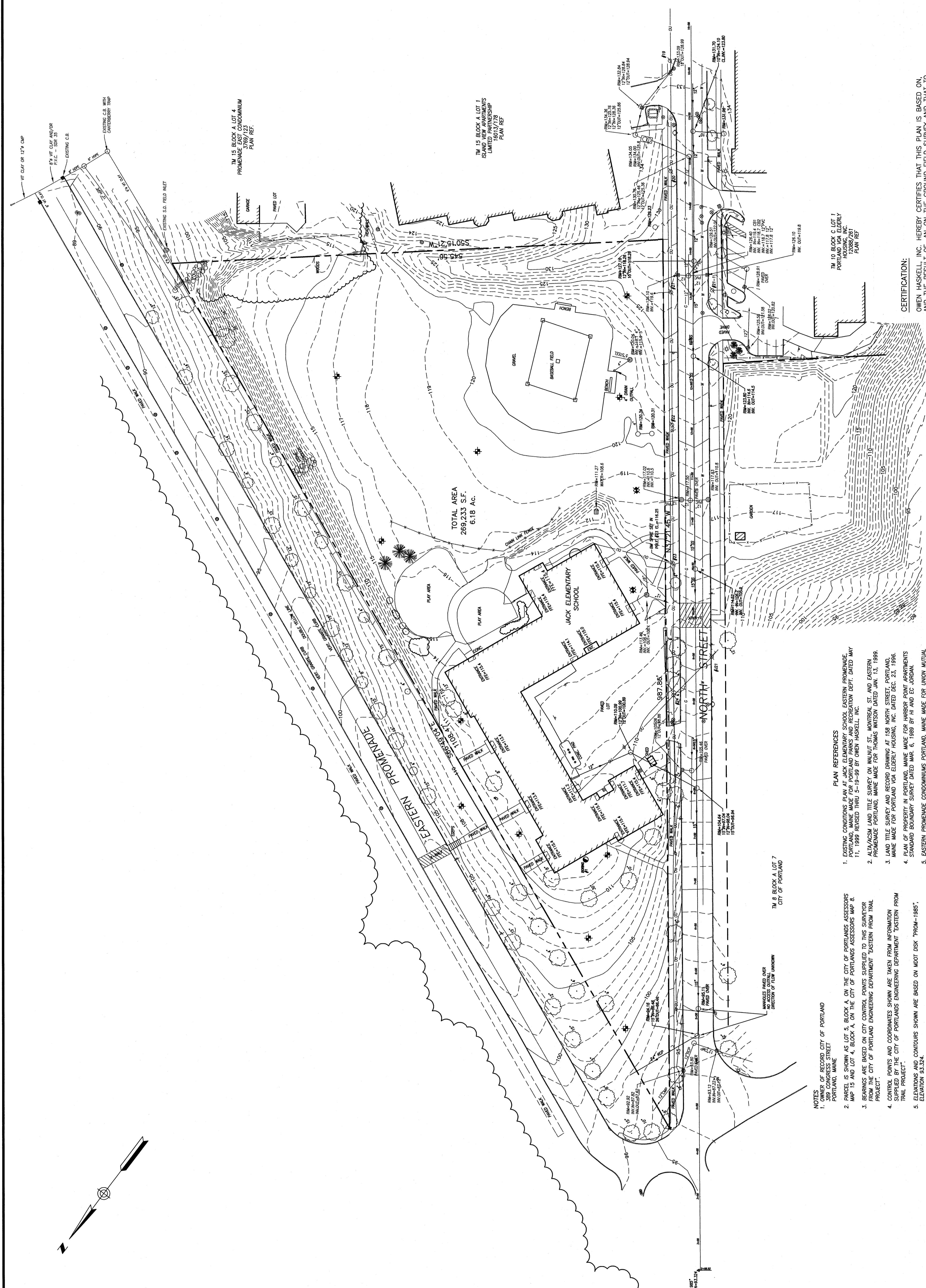


N.T.S.
LOCATION MAP

- LEGEND:**
- MONUMENT
 - WATER GATE
 - WATER POLE
 - WATER MAIN
 - SEWER
 - CATCH BASIN
 - SEIN
 - FENCE
 - POST
 - CURE
 - WATER LINE
 - WATER MAIN
 - SEWER
 - STORM DRAIN
 - 1" CONTOUR
 - DECIDUOUS TREE
 - CONIFEROUS TREE

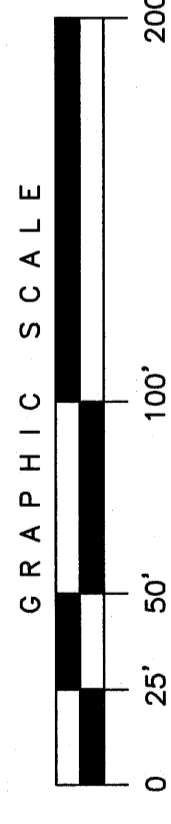


CERTIFICATION:
OWEN HASKELL, INC. HEREBY CERTIFIES THAT THIS PLAN IS BASED ON THE BEST OF OUR KNOWLEDGE, INFORMATION AND BELIEF, IT CONFORMS TO CURRENT STANDARDS OF PRACTICE.

DATE
WILLIAM C. SHIFFEN, PLS NO. 2118

- PLAN REFERENCES**
- EXISTING CONVEYANCE PLAN OF JACK ELEMENTARY SCHOOL, EASTERN PROMENADE, PORTLAND, MAINE, MADE FOR OWEN HASKELL, INC. BY THOMAS WILSON DATED JAN. 13, 1988.
 - ALTA/ACSM LAND TITLE SURVEY ON WALNUT ST., MONROE ST. AND EASTERN PROMENADE, PORTLAND, MAINE, MADE FOR THOMAS WILSON DATED JAN. 13, 1988.
 - MANE TITLE PLAN AND CONVEYANCE PLAN, MADE FOR OWEN HASKELL, INC. BY THOMAS WILSON DATED JAN. 13, 1988.
 - PLAN OF PROPERTY IN PORTLAND, MADE FOR HARBOR FRONT APARTMENTS STANDARD BOUNDARY SURVEY DATED MAR. 6, 1988 BY HI AND EC JORDAN.
 - EASTERN PROMENADE CONDOMINIUMS, PORTLAND, MADE FOR UNION MUTUAL INSURANCE CO. DATED 3-26-74 REVISED THRU JUNE 4, 1988 BY HI AND EC JORDAN.
 - MANE STATE HIGHWAY COMMISSION RIGHT OF WAY MAP, PORTLAND STATE HIGHWAY 292 DATED JANUARY 1988 SIC FILE NO. 3-122.
 - CITY OF PORTLAND ENGINEERING DEPARTMENT "NORTH STREET SHEETS 1 AND 2 OF 2, CITY FILE NO. 36 AND 37".
 - CITY OF PORTLAND ENGINEERING DEPARTMENT "E. PROMENADE" SHEETS 3 AND 4 OF 4, CITY FILE NO. 34 AND 35.

- NOTES**
- SHOWN AS SHOWN ON THE CITY OF PORTLAND ASSESSORS MAPS 73 AND 74.
 - SHOWN AS SHOWN ON THE CITY OF PORTLAND ASSESSORS MAP 6.
 - SHOWN AS SHOWN ON THE CITY OF PORTLAND ENGINEERING DEPARTMENT TRAIL PROJECT.
 - CONTROL POINTS AND COORDINATES SHOWN ARE TAKEN FROM INFORMATION PROVIDED TO THIS SURVEYOR BY THE CITY OF PORTLANDS ENGINEERING DEPARTMENT "EASTERN PROMENADE TRAIL PROJECT".
 - ELEVATIONS AND CONTOURS SHOWN ARE BASED ON MGS DSD "TRIM-1985", ELEVATION 81.324.
 - THE SIDINGS OF NORTH STREET AND THE EASTERN PROMENADE ARE BASED ON THE CITY OF PORTLANDS ENGINEERING DEPARTMENT "TRAIL PROJECT" DRAWINGS PROVIDED TO THIS SURVEYOR BY THE CITY OF PORTLANDS ENGINEERING DEPARTMENT "EASTERN PROMENADE TRAIL PROJECT".
 - REVISIONS SHOWN WERE PERFORMED BY OTHERS AND FIELD LOCATED BY OWEN HASKELL, INC.
 - THE ELEVATIONS SHOWN ARE NOT BASED ON ANY PREVIOUS STODDINGS WITHIN THE PROJECT AREA, AN ELEVATION STATION (20+400) WAS PLOTTED FOR THE CENTERLINE OF THE EASTERN PROMENADE AS IT PASSES ABOUT DOKK "TRIM-1985" IS SHOWN.
 - THE WIDTH OF NORTH STREET WITHIN THE PROJECT AREA IS 66 FEET. THE WIDTH OF THE EASTERN PROMENADE WITHIN THE PROJECT AREA IS 148.50 FEET.



BOUNDARY SURVEY AND TOPOGRAPHIC SURVEY
EASTERN PROMENADE AND NORTH STREET
PORTLAND, MAINE
MADE FOR
PORTLAND SCHOOL DEPARTMENT
PORTLAND, MAINE

OWEN HASKELL, INC.
18 CASCO ST., PORTLAND, ME 04101 (807) 774-4484
PROFESSIONAL LAND SURVEYORS

Drawn By	RES	Date	JANUARY 09, 2004	Job No.	2003-251 P
Trace By	RWC	Scale	1" = 50'	Dwg. No.	—
Check By	WCS	Book No.	983		

East End
Portland Public Schools
Portland, Maine

Job No.: 0309
Date: January 14, 2004
Drawn by: T-50
Checked by: —
Drawing Title: Existing Conditions and Topographic Survey

C-5

Consultants

DalUCA-Hoffman Associates

- Landscaping Architect
- Carroll Associates
- Structural Engineer
- Plintham & Greer
- Mechanical Engineer
- Barrett Engineering
- Barrett Design
- Known Design
- TJM Consulting
- Gene Consultant
- FOR SOLUTIONS

50 Danvers Street
Portland, Maine
04102-2688
207.762.9811
207.762.0105
easth@earthlink.net