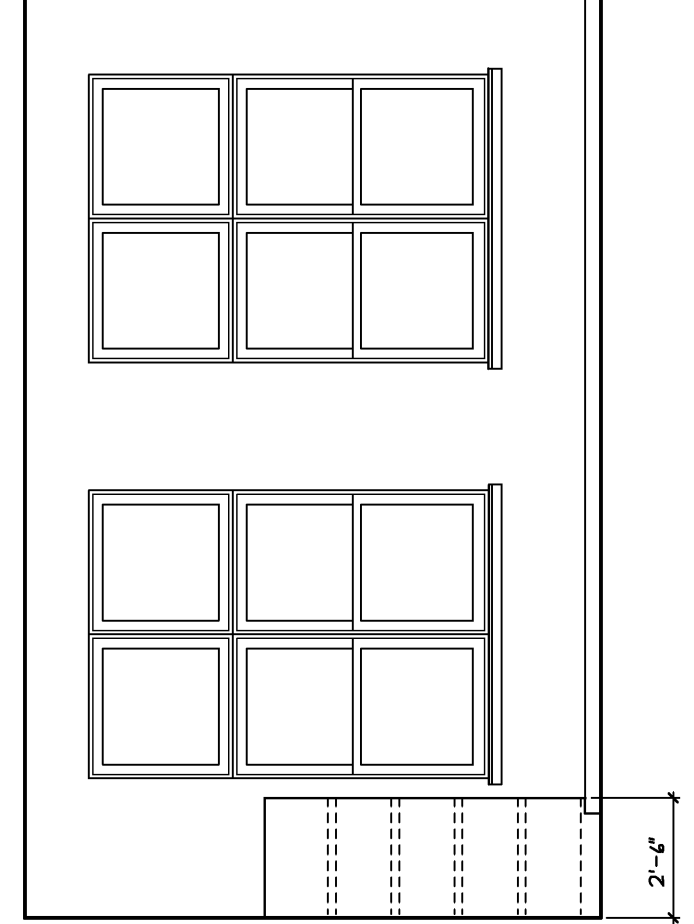
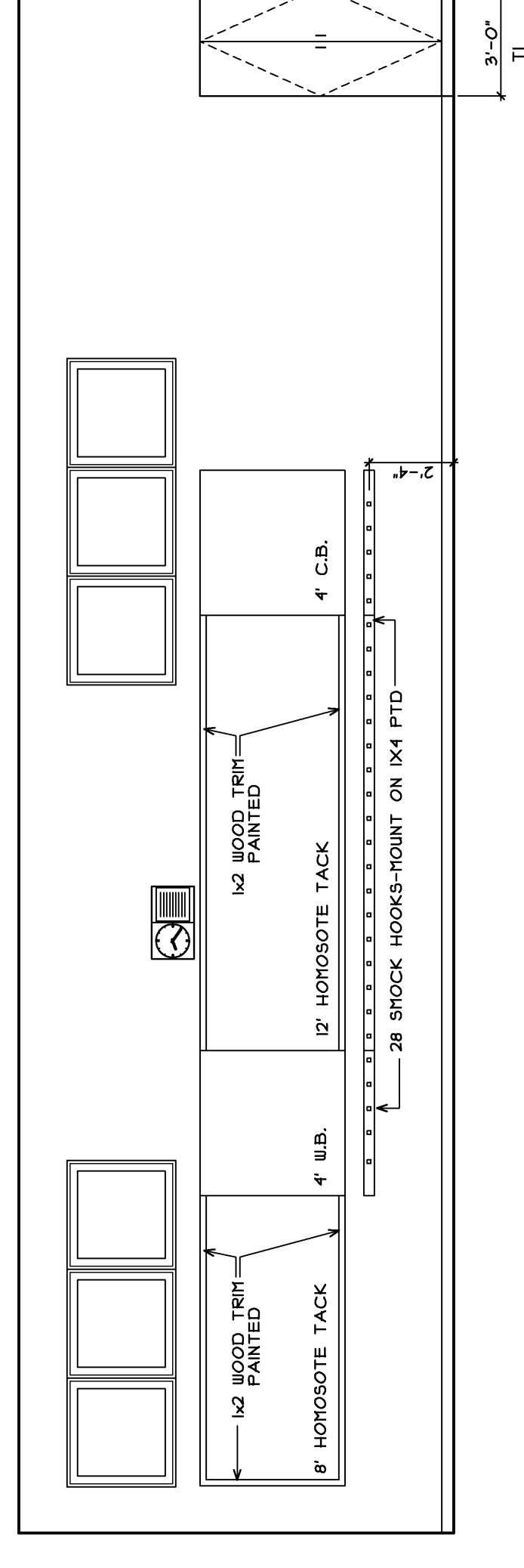


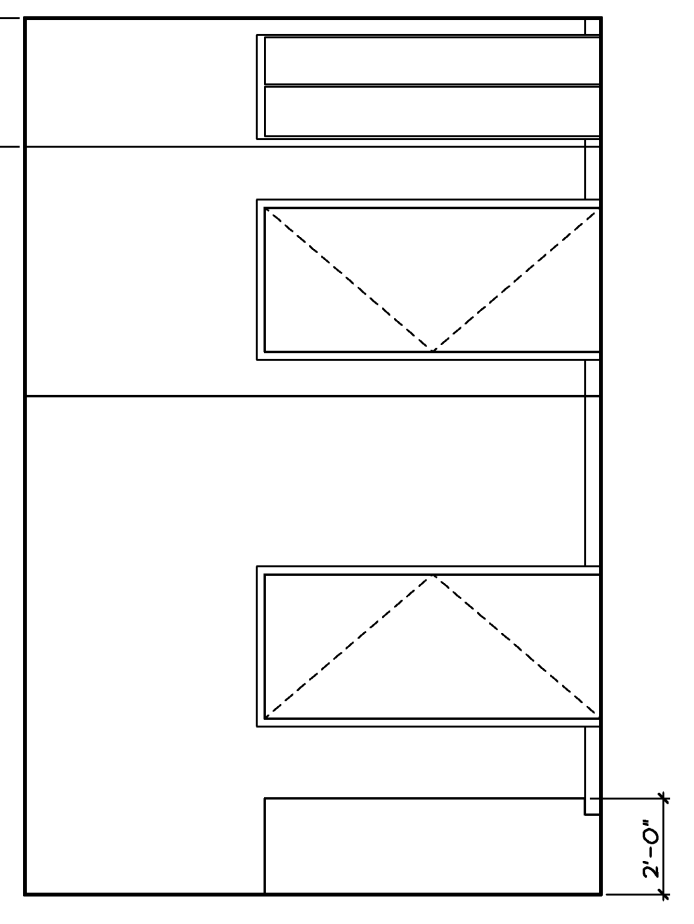
1 ART 340
A11 SCALE: 1/4" = 1'-0"



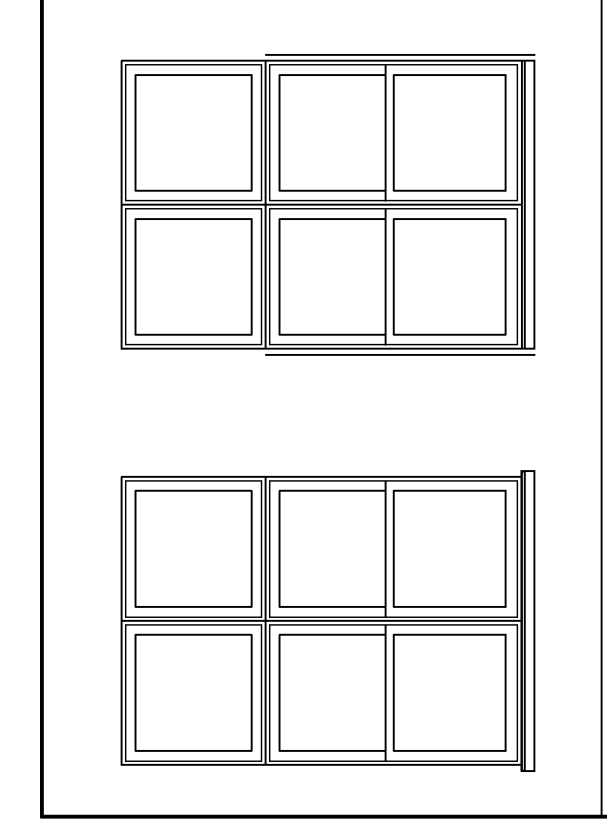
2 ART 340
A11 SCALE: 1/4" = 1'-0"



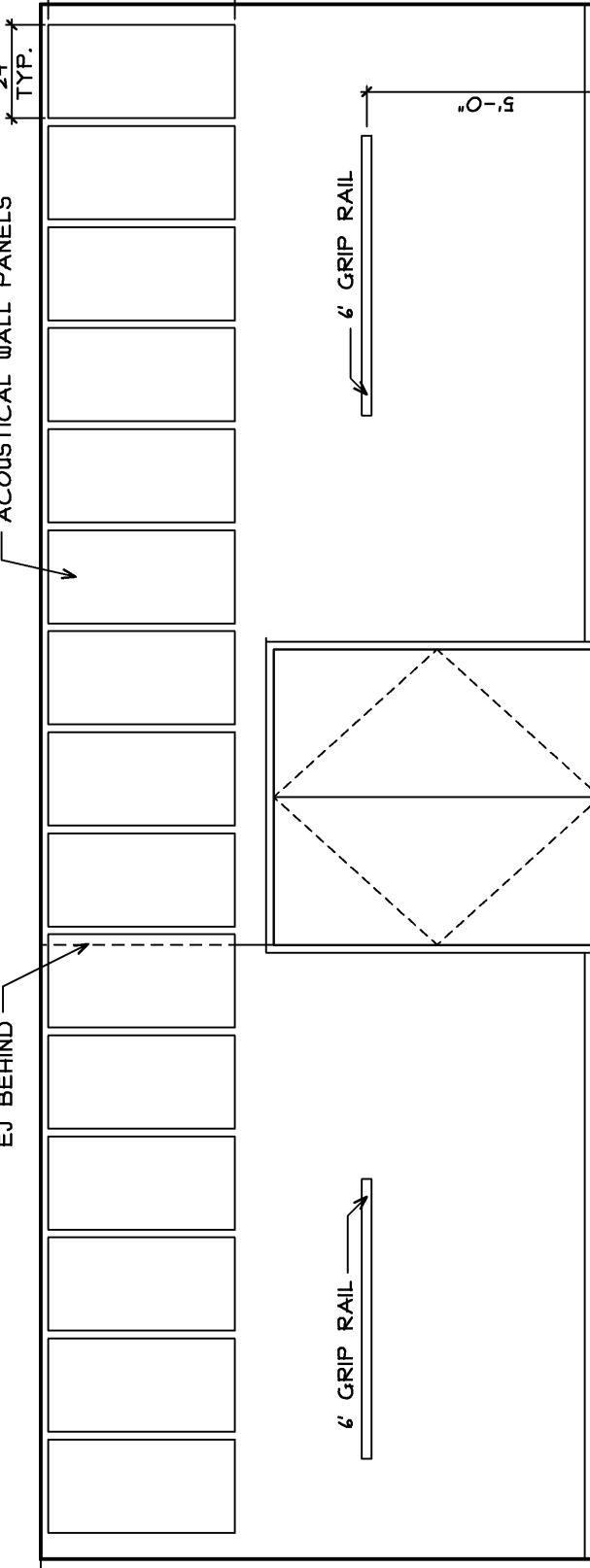
3 ART 340
A11 SCALE: 1/4" = 1'-0"



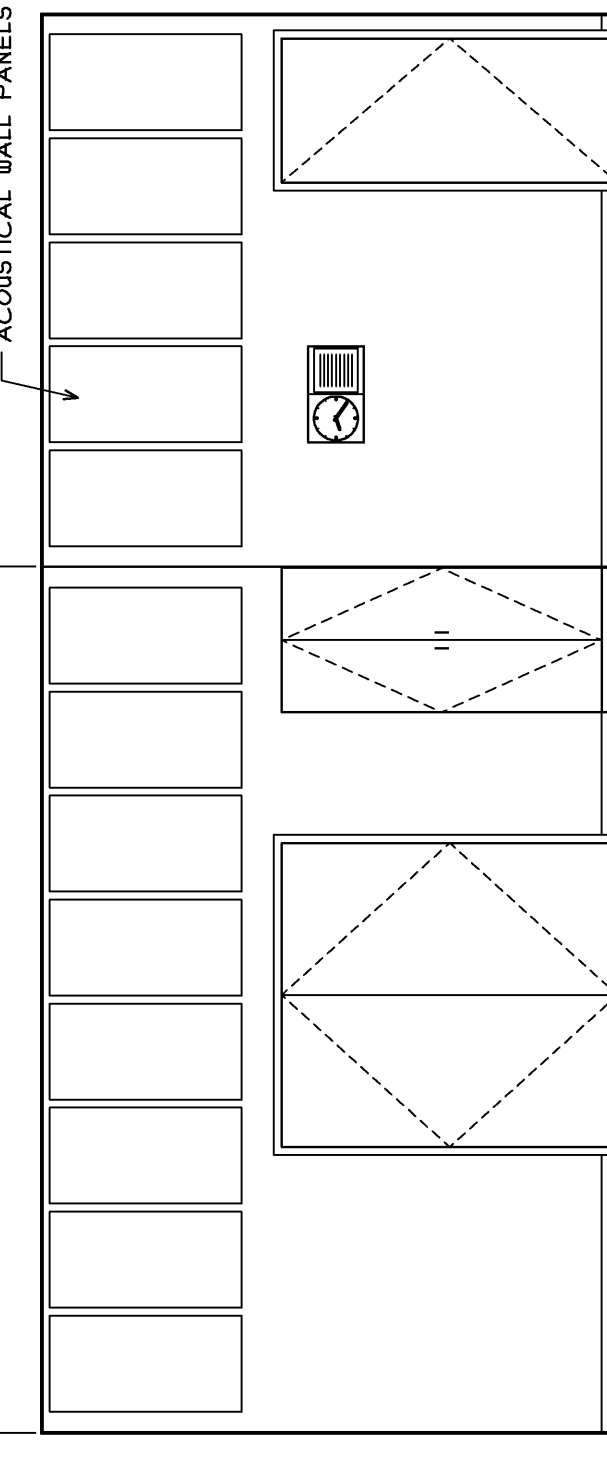
4 ART 340
A11 SCALE: 1/4" = 1'-0"



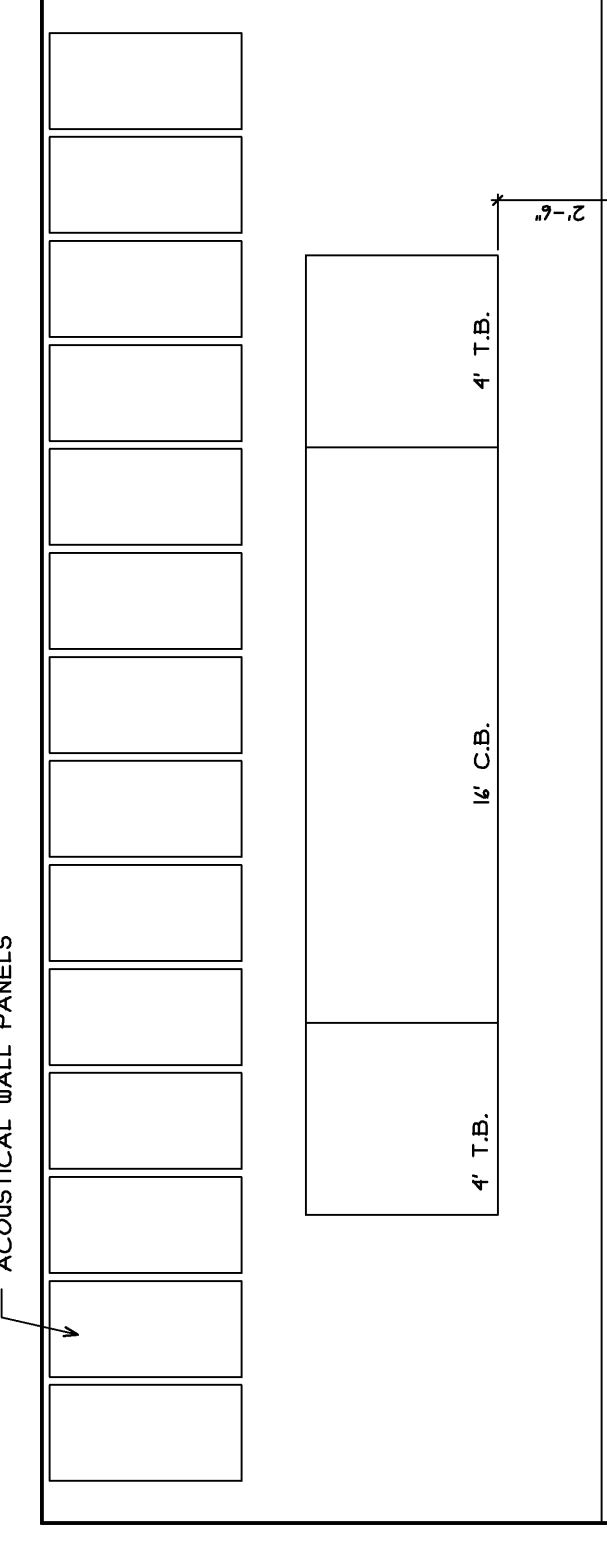
5 MUSIC 338
A11 SCALE: 1/4" = 1'-0"



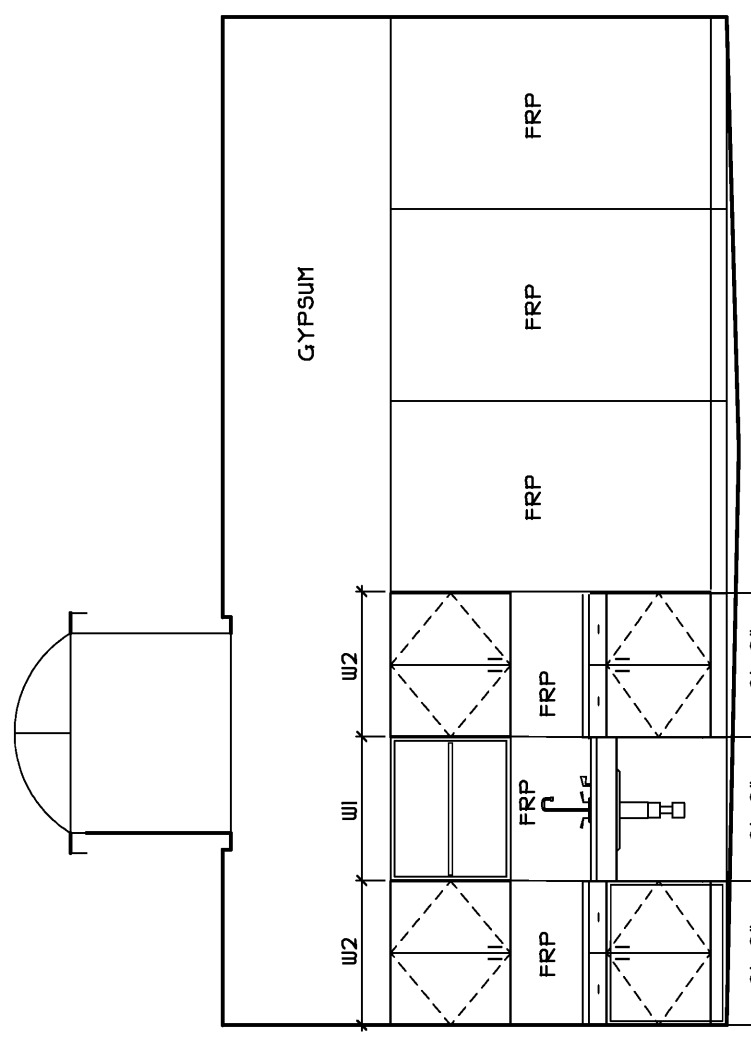
6 MUSIC 338
A11 SCALE: 1/4" = 1'-0"



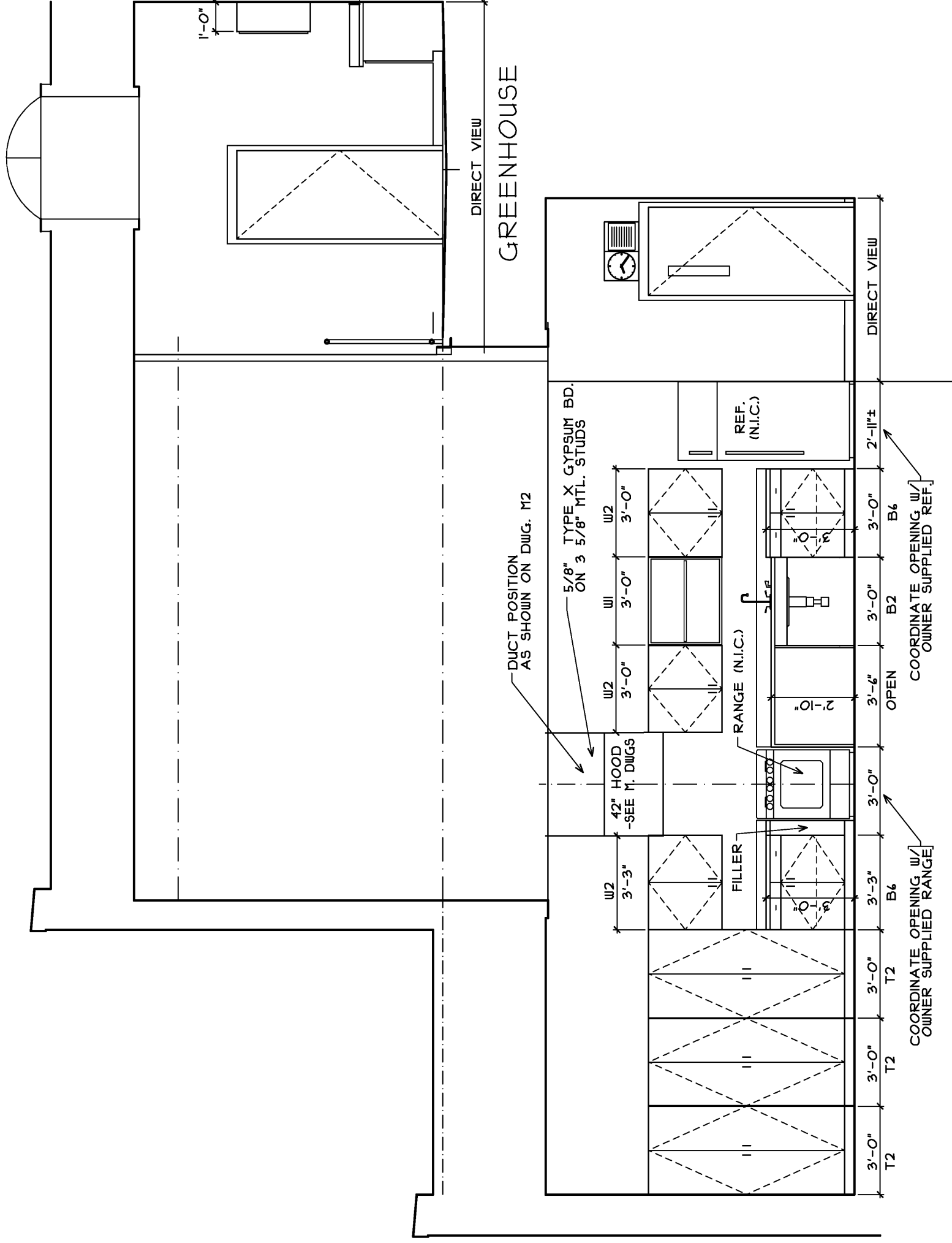
7 MUSIC 338
A11 SCALE: 1/4" = 1'-0"



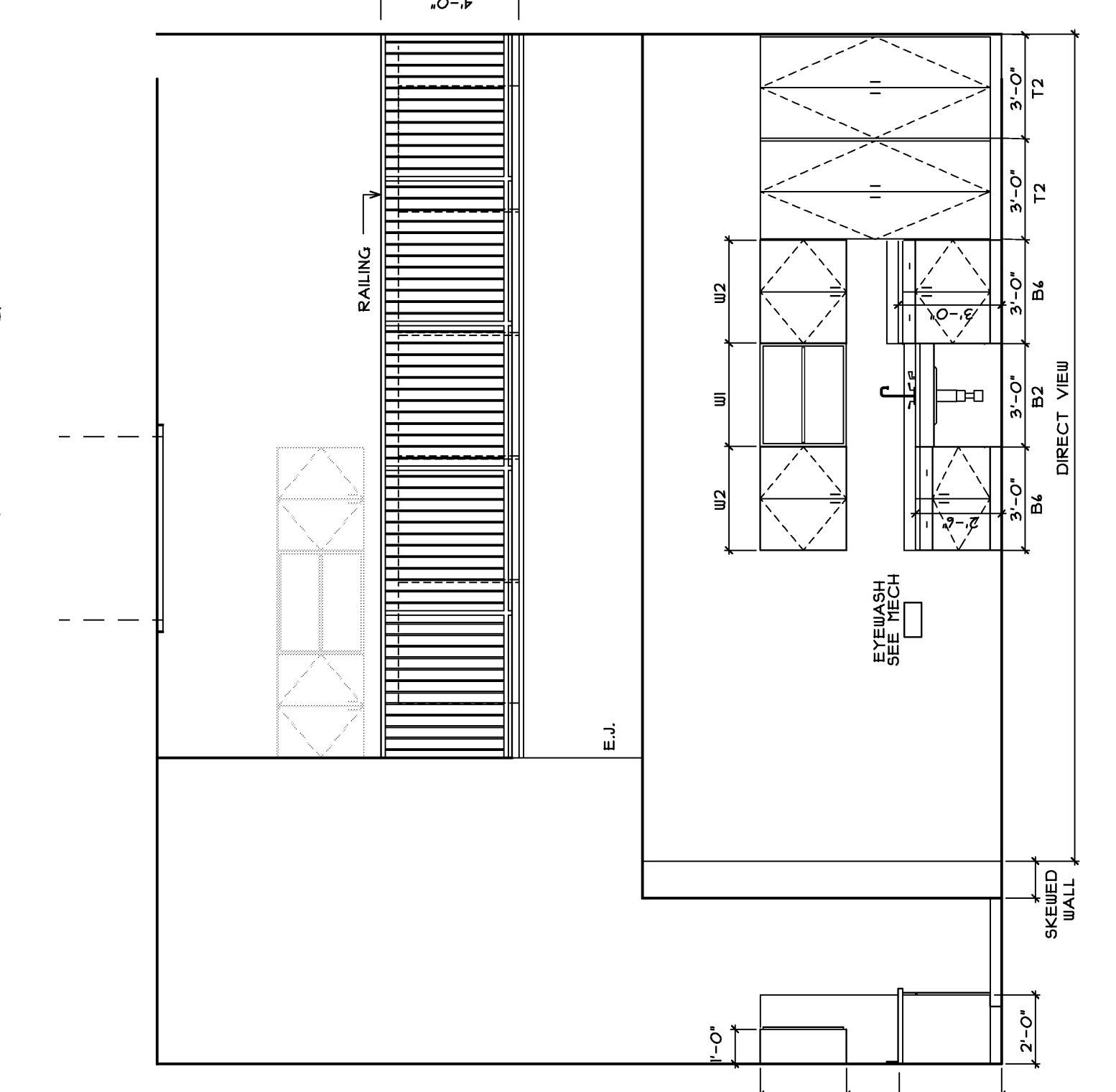
8 MUSIC 338
A11 SCALE: 1/4" = 1'-0"



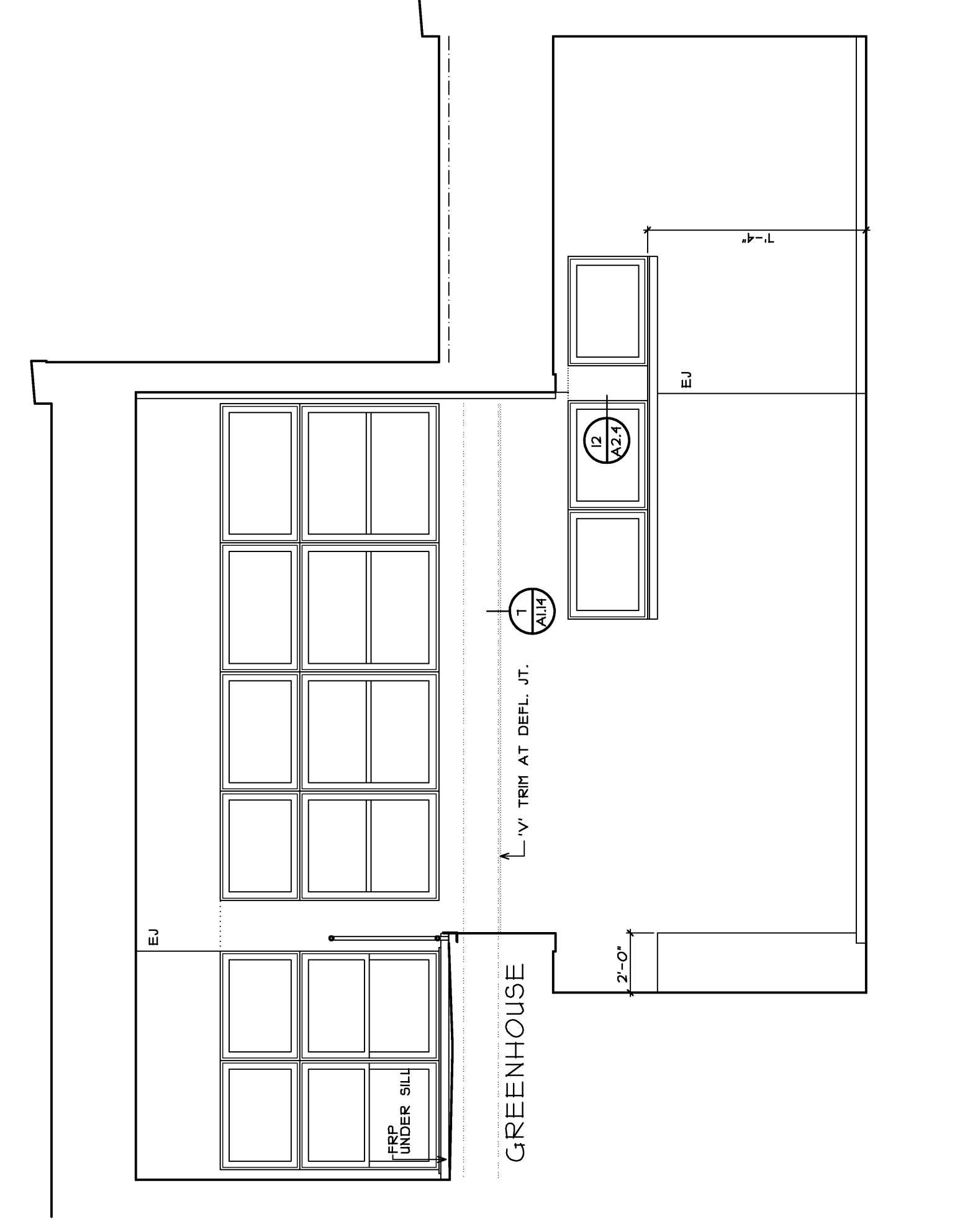
ELEVATION BEHIND RAILING



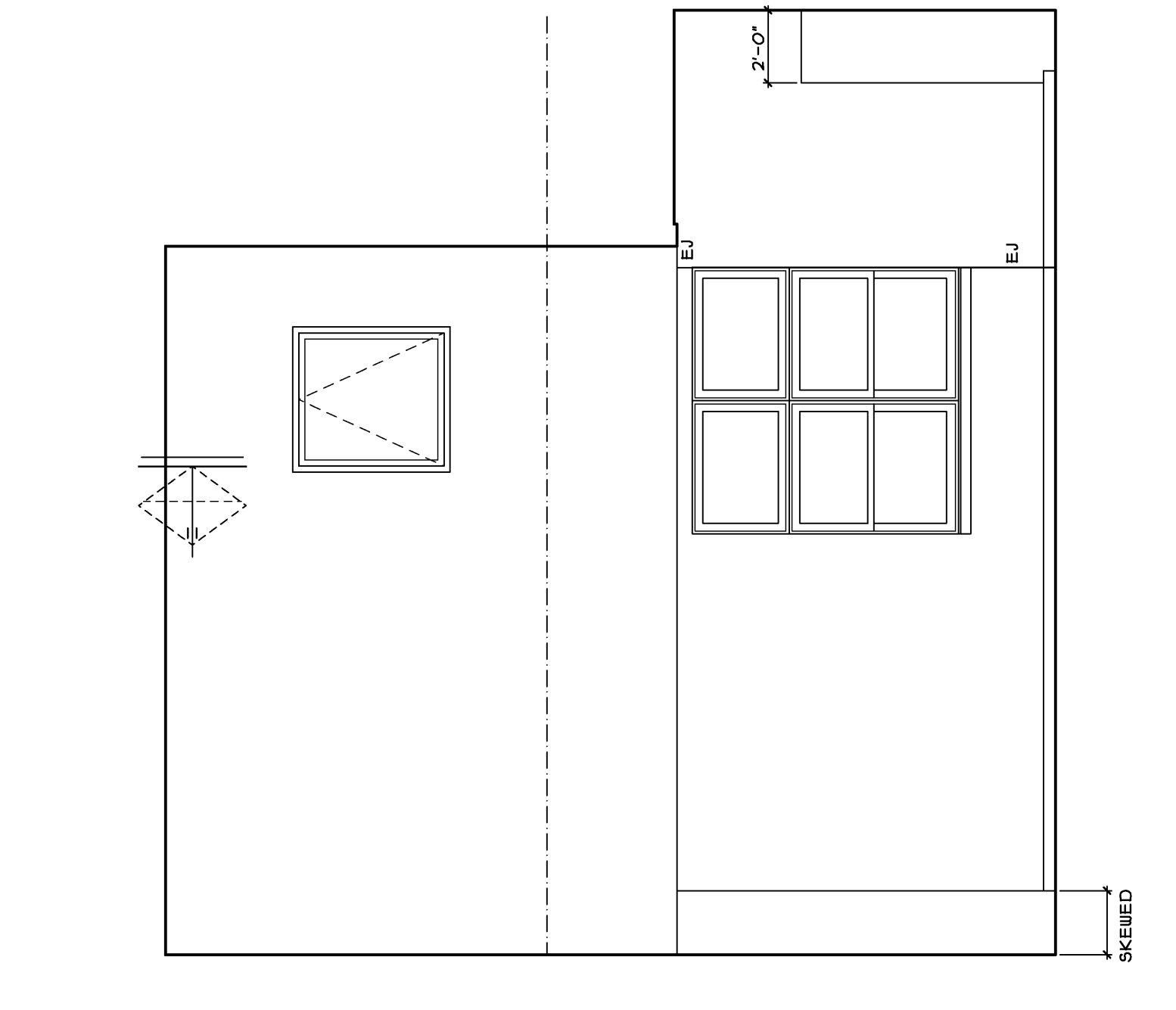
9 HANDS-ON/G&T. 125
A12 SCALE: 1/4" = 1'-0"



10 HANDS-ON/G&T. 125
A12 SCALE: 1/4" = 1'-0"



11 HANDS-ON/G&T. 125
A12 SCALE: 1/4" = 1'-0"



12 HANDS-ON/G&T. 125
A12 SCALE: 1/4" = 1'-0"

	East End Elementary School Palmetto Public Schools Palmetto, Florida	Job No.: 089 Date: 04/15/2004 Scale: 1/4" = 1'-0" Drawn by: RFG Checked by: JPH	Interior Elevations AV/MUSIC/HANDS-ON	A5.6
	Consultants: Civil Engineer: Deluca-Hoffman Associates Landscape Architect: Carroll Associates Structural Engineer: Pinkham & Greer Mechanical Engineer: Bennett Engineering Electrical Engineer: Bartlett Design Kitchen Design: The Kitchen People Case Consulting: Fore Solutions	Drawing Title: Interior Elevations AV/MUSIC/HANDS-ON		
		10 Dunbar Street Palm Office Bldg Suite 200 Palmetto, FL 34107 Phone: 813.981.1111 Fax: 813.981.1111 Email: info@delucahoffman.com	10 Dunbar Street Palm Office Bldg Suite 200 Palmetto, FL 34107 Phone: 813.981.1111 Fax: 813.981.1111 Email: info@delucahoffman.com	