

11B PLATFORM EDGE DETAIL
 A33 SCALE: 1/2" = 1'-0"

8 WALL SECTION
 A33 SCALE: 3/4" = 1'-0"

9 WALL SECTION
 A33 SCALE: 3/4" = 1'-0"

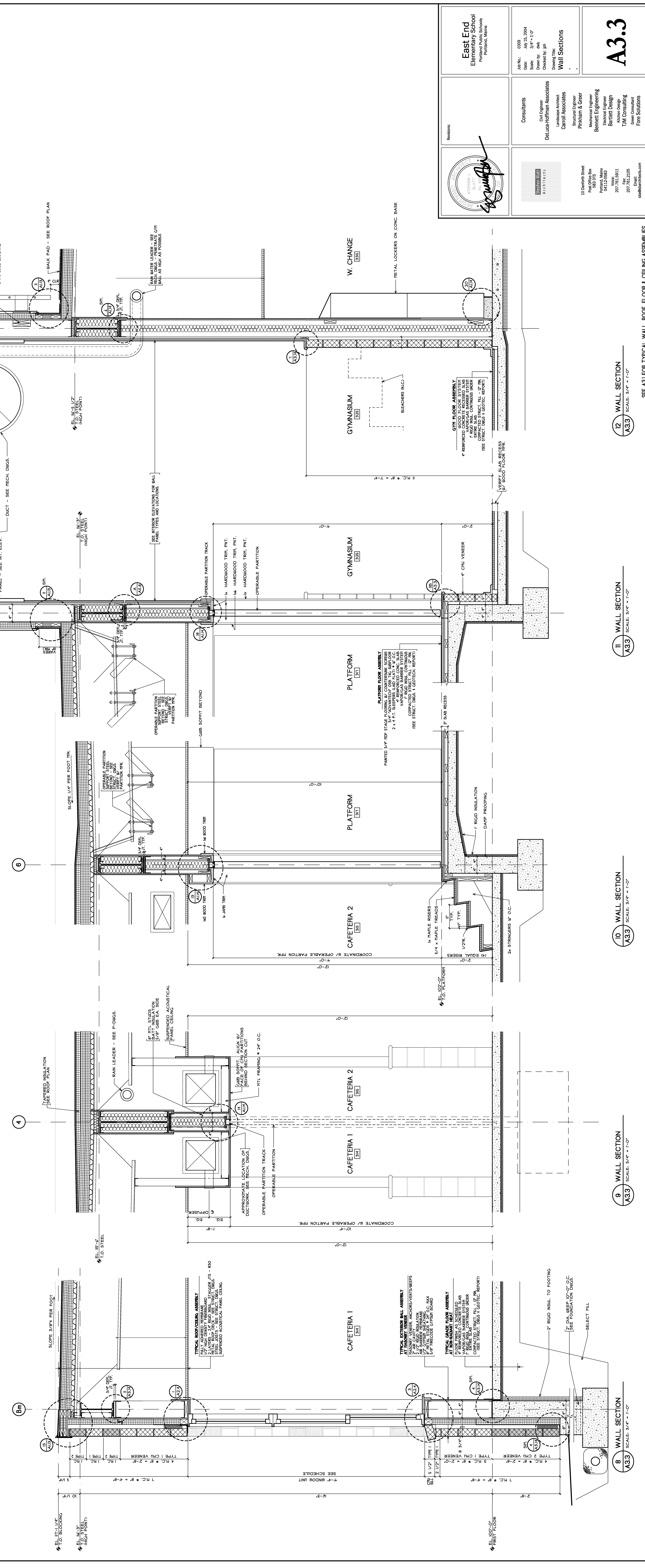
10 WALL SECTION
 A33 SCALE: 3/4" = 1'-0"

11 WALL SECTION
 A33 SCALE: 3/4" = 1'-0"

12 WALL SECTION
 A33 SCALE: 3/4" = 1'-0"

11A PARTIAL WALL SECTION
 A33 SCALE: 3/4" = 1'-0"

10A PARTIAL WALL SECTION
 A33 SCALE: 3/4" = 1'-0"

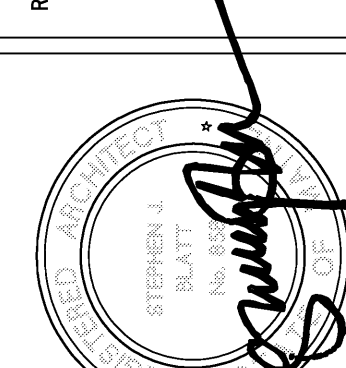


11B WALL SECTION
 A33 SCALE: 3/4" = 1'-0"

11A PARTIAL WALL SECTION
 A33 SCALE: 3/4" = 1'-0"

10A PARTIAL WALL SECTION
 A33 SCALE: 3/4" = 1'-0"

12 WALL SECTION
 A33 SCALE: 3/4" = 1'-0"

East End Elementary School Portland, Maine		No. 1037 Date: 09/13/2004 Scale: 3/4" = 1'-0" Drawn by: oek Checked by: jh Drawing Title: Wall Sections	A3.3
Consultants: Civil Engineer Landscape Architect Structural Engineer Mechanical Engineer Electrical Engineer Architectural Designer T.M. Consulting Fore Solutions		Architects: 	10 Duane Street Portland, ME 04101 Phone: 207.762.5411 Fax: 207.762.5411 Email: eastend@fore.com

SEE A31 FOR TYPICAL WALL, ROOF-FLOOR & CEILING ASSEMBLIES