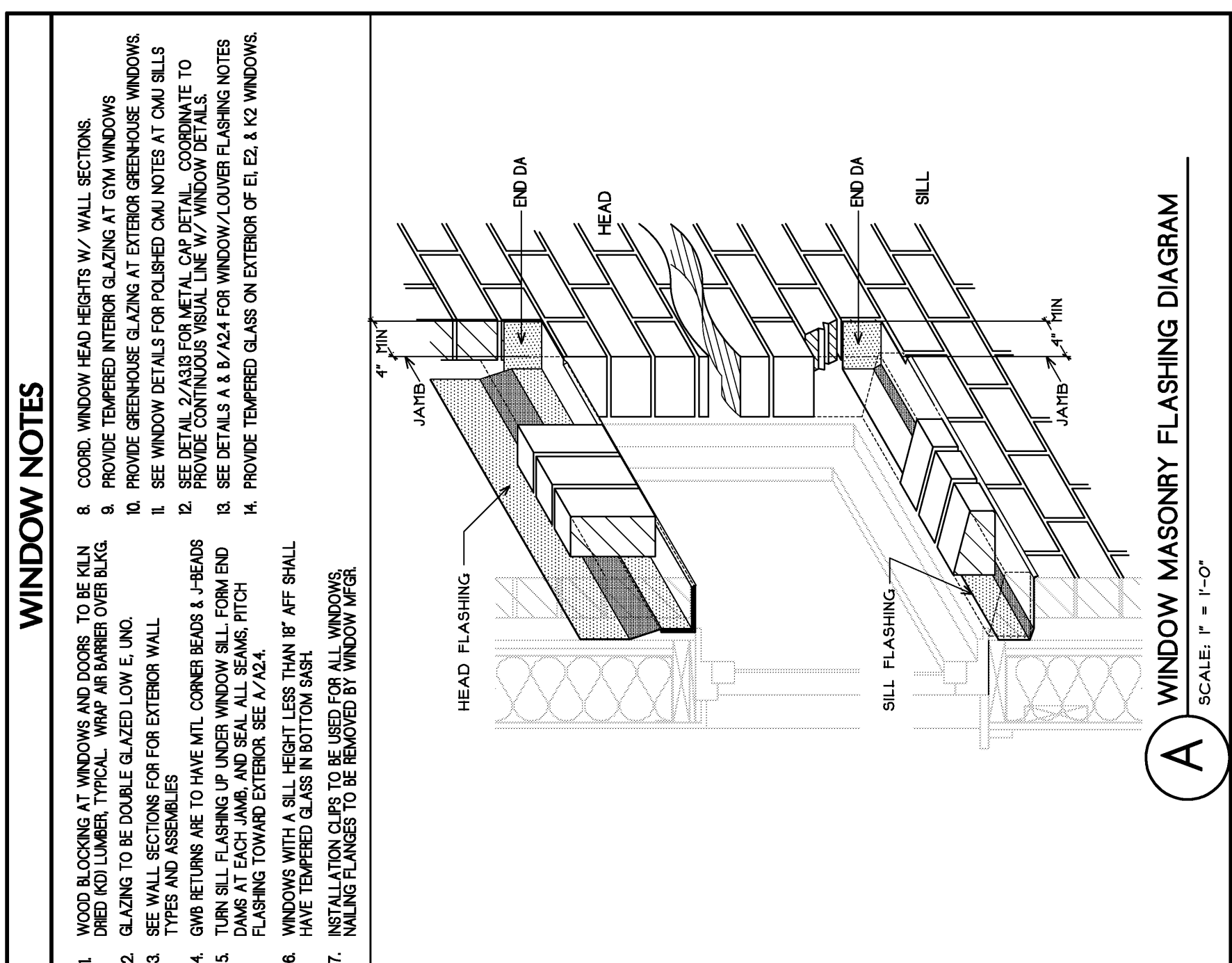
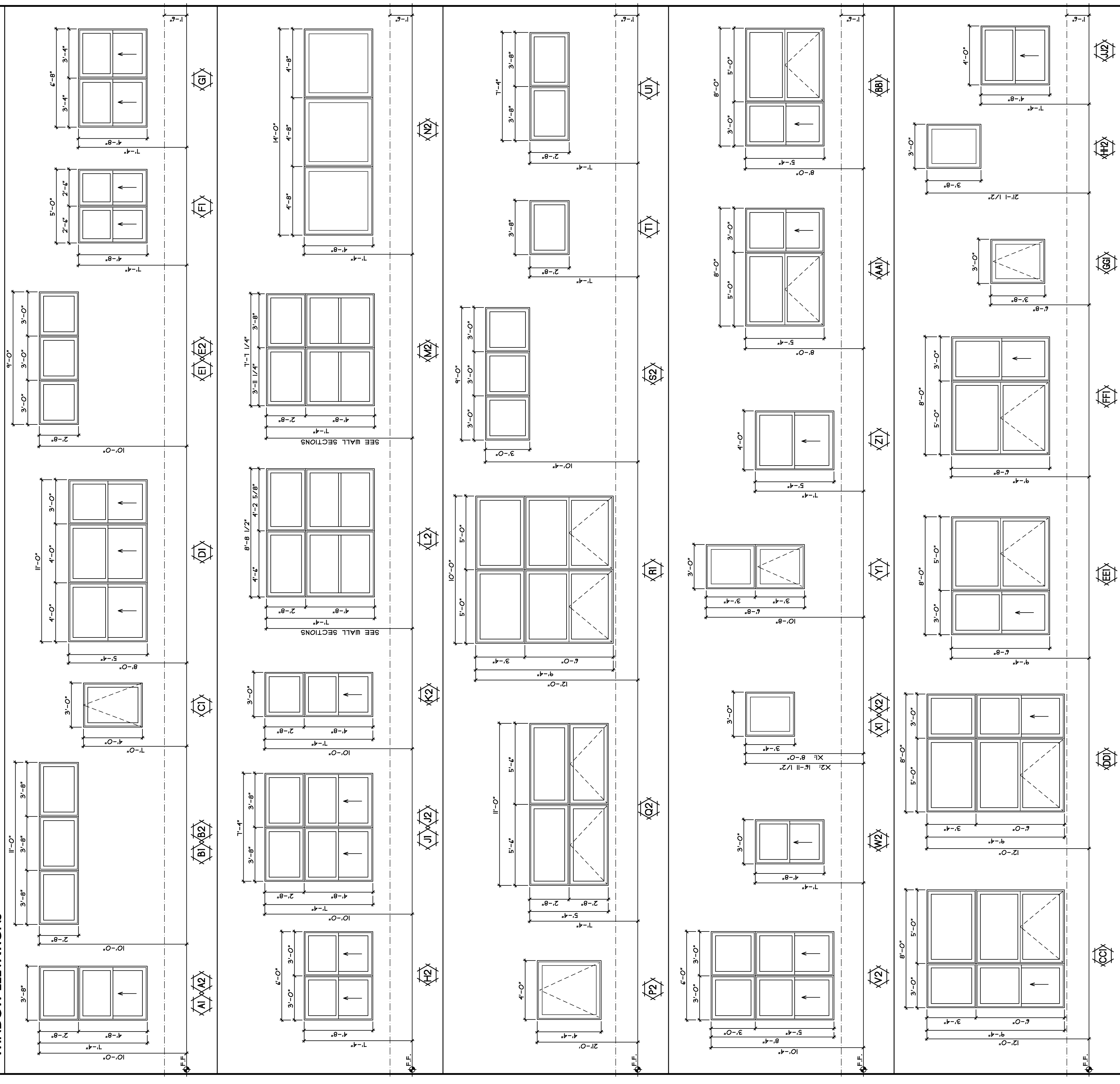
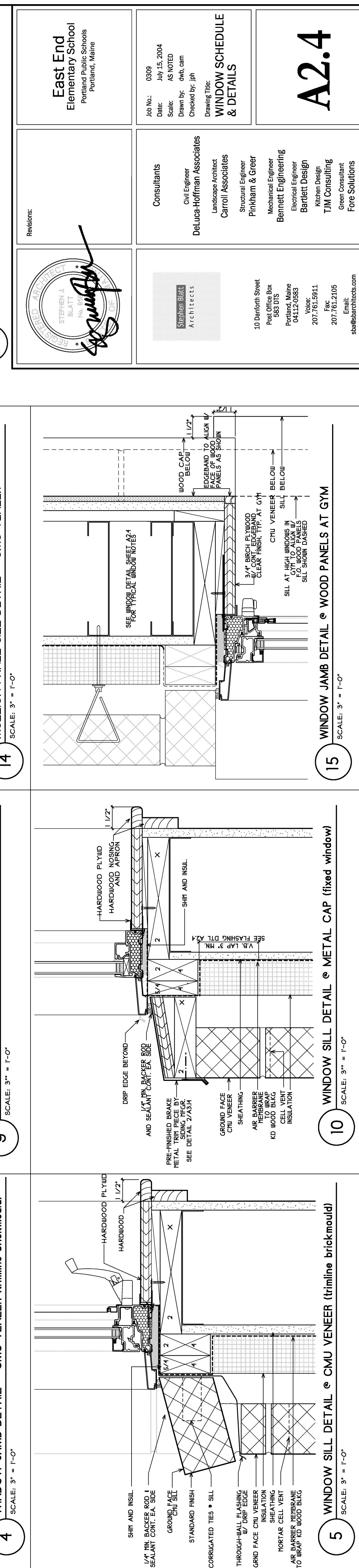
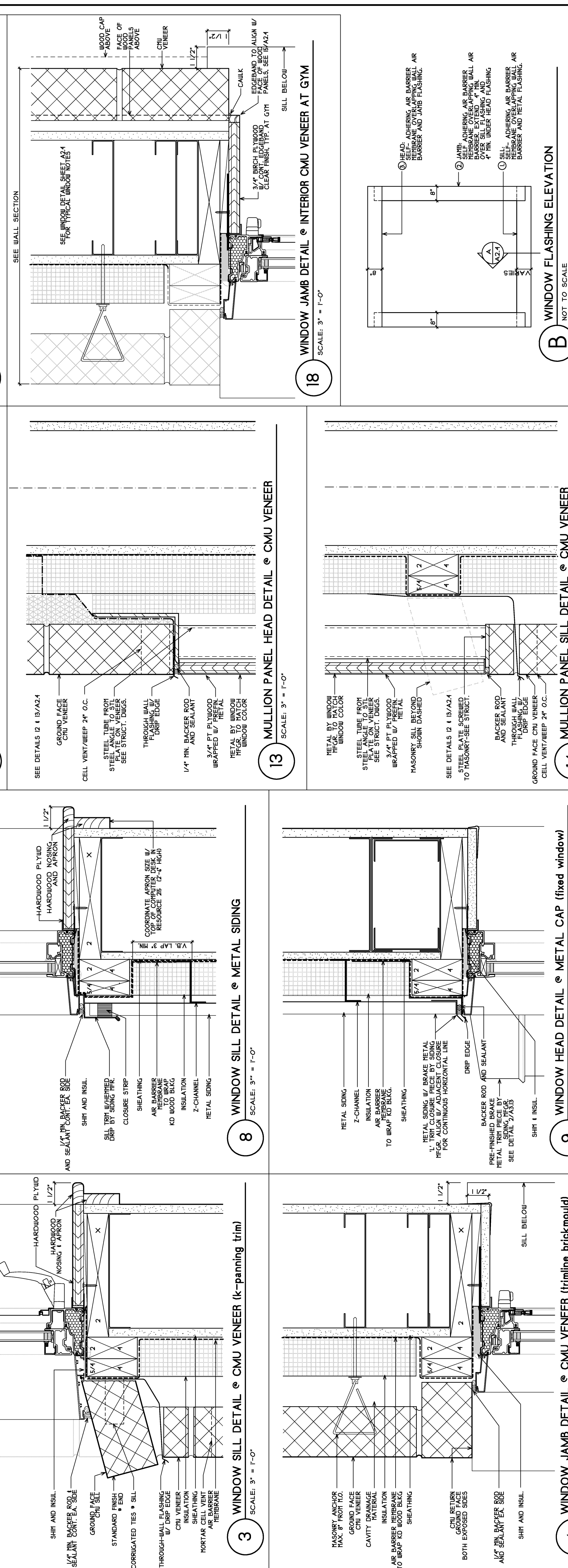
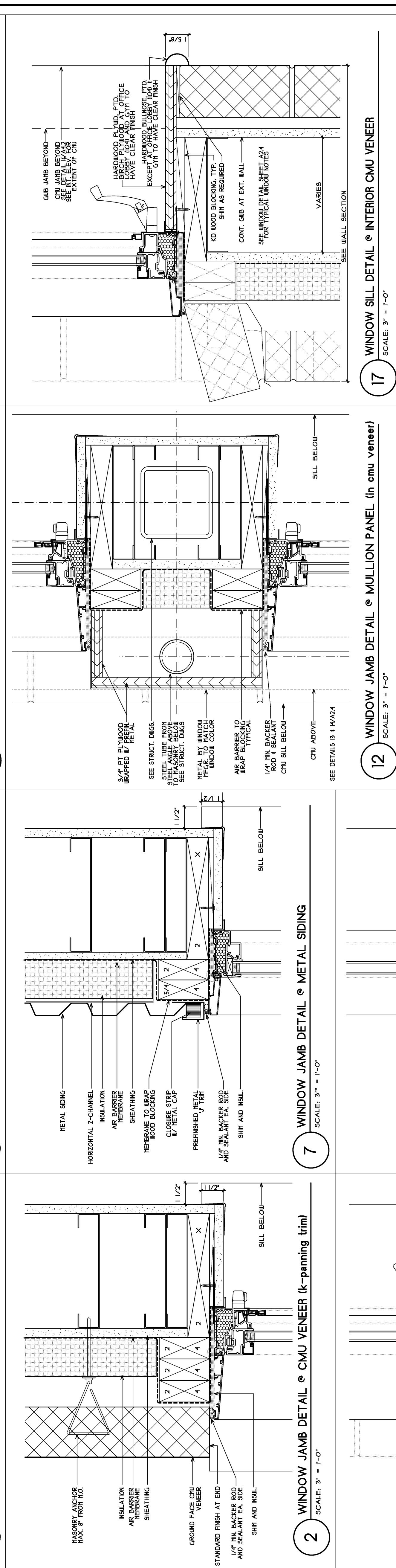
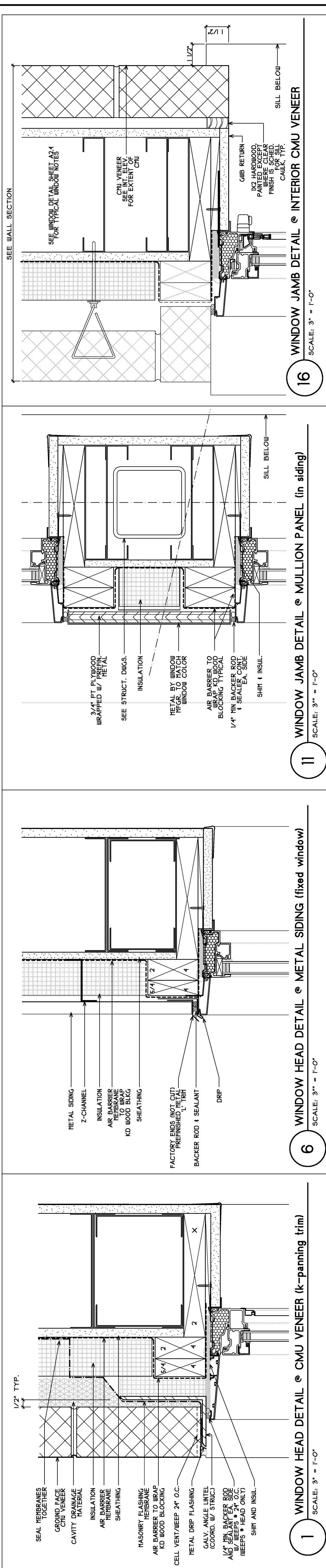


WINDOW SCHEDULE	FRAME	DETAILS	REMARKS
KEY	BROCKAOLD / TRIM STYLE	SHEETS A24 & A25	
	BRAND OF FRAME	JAMB	
		HEAD	
		SILL	
A1	SINGLE HANG W/ TRANSOM	1	2, 2, 2
A2	SINGLE HANG W/ TRANSOM	6	4, 7, 8, 5, 8
B1	FIXED	1	2, 2
B2	FIXED	6	4, 7, 8, 5, 8
C1	SINGLE HANG	1	2, 2
C2	SINGLE HANG	6	4, 7, 8, 5, 8
D1	FIXED	1	2, 2
D2	FIXED	6	4, 7, 8, 5, 8
E1	FIXED	1	2, 2
E2	FIXED	6	4, 7, 8, 5, 8
F1	SINGLE HANG	1	2, 2
F2	SINGLE HANG	6	4, 7, 8, 5, 8
G1	SINGLE HANG W/ TRANSOM	1	2, 2
G2	SINGLE HANG W/ TRANSOM	6	4, 7, 8, 5, 8
H1	FIXED	1	2, 2
H2	FIXED	6	4, 7, 8, 5, 8
I1	FIXED	1	2, 2
I2	FIXED	6	4, 7, 8, 5, 8
J1	FIXED	1	2, 2
J2	FIXED	6	4, 7, 8, 5, 8
K1	FIXED	1	2, 2
K2	FIXED	6	4, 7, 8, 5, 8
L1	FIXED	1	2, 2
L2	FIXED	6	4, 7, 8, 5, 8
M1	FIXED	1	2, 2
M2	FIXED	6	4, 7, 8, 5, 8
N1	FIXED	1	2, 2
N2	FIXED	6	4, 7, 8, 5, 8
O1	FIXED	1	2, 2
O2	FIXED	6	4, 7, 8, 5, 8
P1	FIXED	1	2, 2
P2	FIXED	6	4, 7, 8, 5, 8
Q1	FIXED	1	2, 2
Q2	FIXED	6	4, 7, 8, 5, 8
R1	FIXED	1	2, 2
R2	FIXED	6	4, 7, 8, 5, 8
S1	FIXED	1	2, 2
S2	FIXED	6	4, 7, 8, 5, 8
T1	FIXED	1	2, 2
T2	FIXED	6	4, 7, 8, 5, 8
U1	FIXED	1	2, 2
U2	FIXED	6	4, 7, 8, 5, 8
V1	FIXED	1	2, 2
V2	FIXED	6	4, 7, 8, 5, 8
W1	FIXED	1	2, 2
W2	FIXED	6	4, 7, 8, 5, 8
X1	FIXED	1	2, 2
X2	FIXED	6	4, 7, 8, 5, 8
Y1	FIXED	1	2, 2
Y2	FIXED	6	4, 7, 8, 5, 8
Z1	FIXED	1	2, 2
Z2	FIXED	6	4, 7, 8, 5, 8
AA1	FIXED	1	2, 2
AA2	FIXED	6	4, 7, 8, 5, 8
BB1	FIXED	1	2, 2
BB2	FIXED	6	4, 7, 8, 5, 8
CC1	FIXED	1	2, 2
CC2	FIXED	6	4, 7, 8, 5, 8
DD1	FIXED	1	2, 2
DD2	FIXED	6	4, 7, 8, 5, 8
EE1	FIXED	1	2, 2
EE2	FIXED	6	4, 7, 8, 5, 8
FF1	FIXED	1	2, 2
FF2	FIXED	6	4, 7, 8, 5, 8
GG1	FIXED	1	2, 2
GG2	FIXED	6	4, 7, 8, 5, 8
HH1	FIXED	1	2, 2
HH2	FIXED	6	4, 7, 8, 5, 8
II1	FIXED	1	2, 2
II2	FIXED	6	4, 7, 8, 5, 8
JJ1	FIXED	1	2, 2
JJ2	FIXED	6	4, 7, 8, 5, 8
KK1	FIXED	1	2, 2
KK2	FIXED	6	4, 7, 8, 5, 8
LL1	FIXED	1	2, 2
LL2	FIXED	6	4, 7, 8, 5, 8
MM1	FIXED	1	2, 2
MM2	FIXED	6	4, 7, 8, 5, 8
NN1	FIXED	1	2, 2
NN2	FIXED	6	4, 7, 8, 5, 8
OO1	FIXED	1	2, 2
OO2	FIXED	6	4, 7, 8, 5, 8
PP1	FIXED	1	2, 2
PP2	FIXED	6	4, 7, 8, 5, 8
QQ1	FIXED	1	2, 2
QQ2	FIXED	6	4, 7, 8, 5, 8
RR1	FIXED	1	2, 2
RR2	FIXED	6	4, 7, 8, 5, 8
SS1	FIXED	1	2, 2
SS2	FIXED	6	4, 7, 8, 5, 8
TT1	FIXED	1	2, 2
TT2	FIXED	6	4, 7, 8, 5, 8
UU1	FIXED	1	2, 2
UU2	FIXED	6	4, 7, 8, 5, 8
VV1	FIXED	1	2, 2
VV2	FIXED	6	4, 7, 8, 5, 8
WW1	FIXED	1	2, 2
WW2	FIXED	6	4, 7, 8, 5, 8
XX1	FIXED	1	2, 2
XX2	FIXED	6	4, 7, 8, 5, 8
YY1	FIXED	1	2, 2
YY2	FIXED	6	4, 7, 8, 5, 8
ZZ1	FIXED	1	2, 2
ZZ2	FIXED	6	4, 7, 8, 5, 8
AAA1	FIXED	1	2, 2
AAA2	FIXED	6	4, 7, 8, 5, 8
AAA3	FIXED	1	2, 2
AAA4	FIXED	6	4, 7, 8, 5, 8
AAA5	FIXED	1	2, 2
AAA6	FIXED	6	4, 7, 8, 5, 8
AAA7	FIXED	1	2, 2
AAA8	FIXED	6	4, 7, 8, 5, 8
AAA9	FIXED	1	2, 2
AAA10	FIXED	6	4, 7, 8, 5, 8

WINDOW ELEVATIONS SIZES BASED ON ACCURATE DOWN FABRICULUS WINDOWS



- WINDOW NOTES**
1. WINDOW SCHEDULES AT WINDOWS ARE BASED ON THE SET BY THE ARCHITECT.
 2. GLAZING TO BE DOUBLE GLAZED LOW E LENS.
 3. PROVIDE GREENHOUSE GLAZING AT EXTERIOR GREENHOUSE WINDOWS.
 4. PROVIDE INSULATION FOR EXTERIOR WALL.
 5. WINDOW RETURNS ARE TO HAVE MITER CORNER BEADS & HEADS.
 6. WINDOW SILL FLASHING IS TO BE APPLIED TO THE WINDOW SILL FROM END TO END.
 7. WINDOW SILL FLASHING IS TO BE APPLIED TO THE WINDOW SILL FROM END TO END.
 8. WINDOW SILL FLASHING IS TO BE APPLIED TO THE WINDOW SILL FROM END TO END.
 9. WINDOW SILL FLASHING IS TO BE APPLIED TO THE WINDOW SILL FROM END TO END.
 10. WINDOW SILL FLASHING IS TO BE APPLIED TO THE WINDOW SILL FROM END TO END.
 11. WINDOW SILL FLASHING IS TO BE APPLIED TO THE WINDOW SILL FROM END TO END.
 12. WINDOW SILL FLASHING IS TO BE APPLIED TO THE WINDOW SILL FROM END TO END.
 13. WINDOW SILL FLASHING IS TO BE APPLIED TO THE WINDOW SILL FROM END TO END.
 14. WINDOW SILL FLASHING IS TO BE APPLIED TO THE WINDOW SILL FROM END TO END.
 15. WINDOW SILL FLASHING IS TO BE APPLIED TO THE WINDOW SILL FROM END TO END.
 16. WINDOW SILL FLASHING IS TO BE APPLIED TO THE WINDOW SILL FROM END TO END.
 17. WINDOW SILL FLASHING IS TO BE APPLIED TO THE WINDOW SILL FROM END TO END.
 18. WINDOW SILL FLASHING IS TO BE APPLIED TO THE WINDOW SILL FROM END TO END.
 19. WINDOW SILL FLASHING IS TO BE APPLIED TO THE WINDOW SILL FROM END TO END.
 20. WINDOW SILL FLASHING IS TO BE APPLIED TO THE WINDOW SILL FROM END TO END.



East End Elementary School
Portland Public Schools
Portland, Maine

Scale: AS NOTED
Drawn by: emk, cam
Checked by: jph

WINDOW SCHEDULE & DETAILS

Consultants:
Civil Engineer: Dalus Hoffman Associates
Landscape Architect: Control Associates
Structural Engineer: Pinkham & Greer
Mechanical Engineer: Bennett Engineering
Electrical Engineer: Bennett Design
Interior Designer: T.H. Consulting
Architect: emk, cam
Fore Solutions

10 Main Street
Portland, ME 04103
Phone: 207.625.1111
Fax: 207.625.1105
www.emkcam.com

A2.4