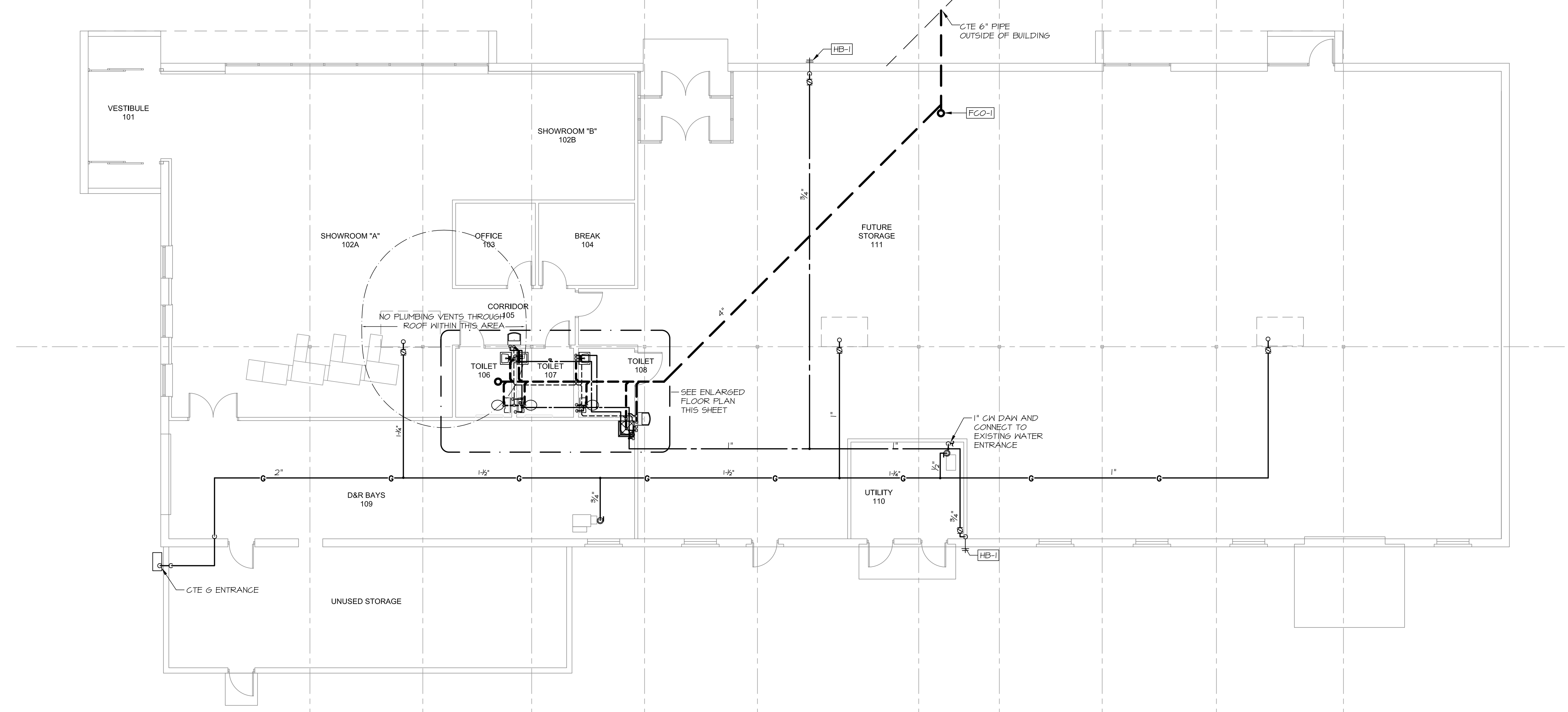
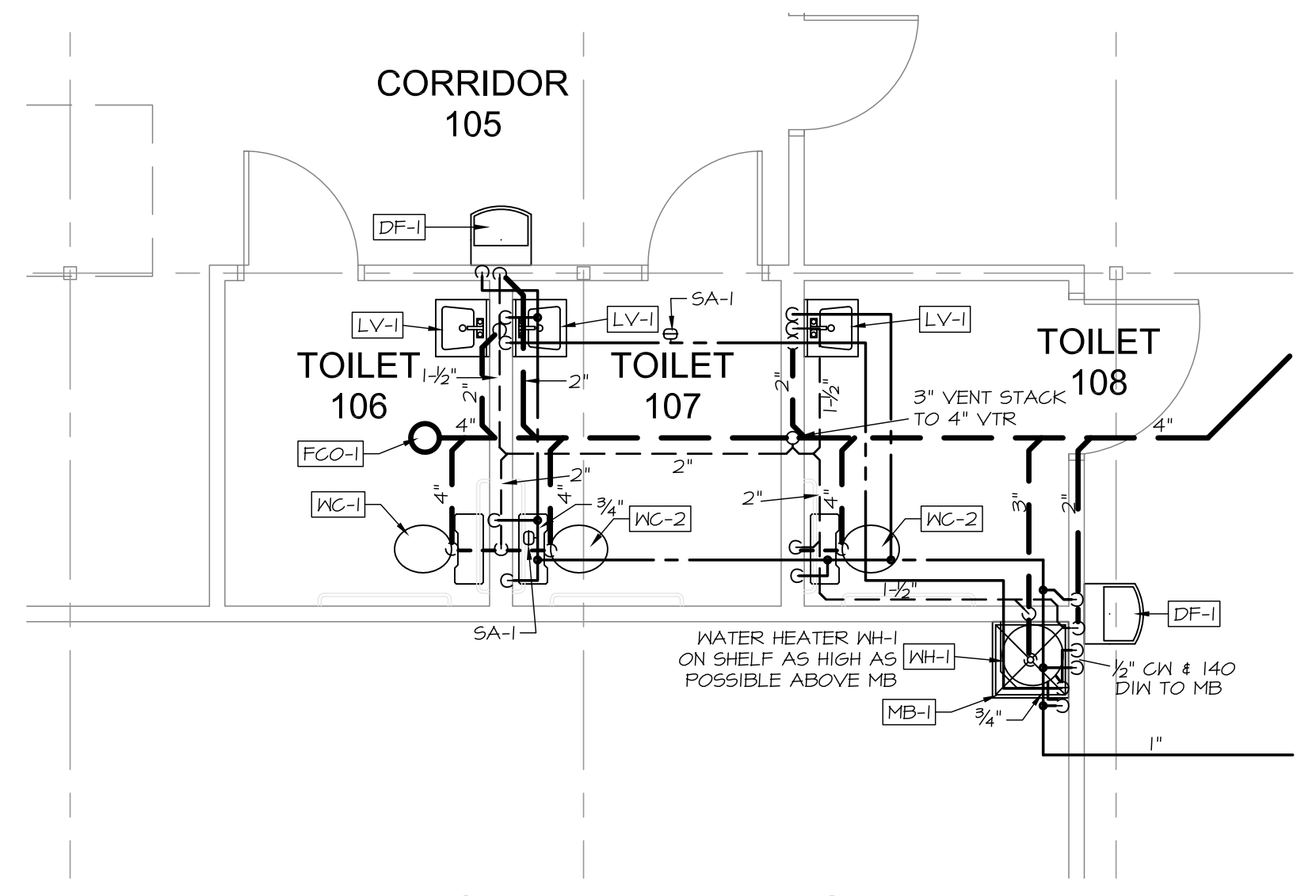


ROBERT J. FOSTER ARCHITECT  
 36 Groveside Road, Portland, Maine 04102  
 (207) 761-3822



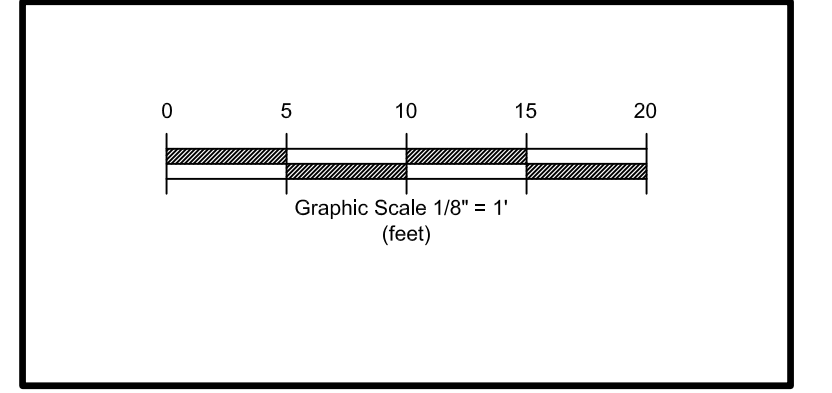
**PLUMBING FLOOR PLAN**  
 1/8" = 1'-0"



**ENLARGED PLUMBING PART PLAN**  
 1/4" = 1'-0"

Project Title  
**U-HAUL MOVING & STORAGE**  
 425 MARGINAL WAY  
 Portland, Maine

Aug. 15, 2014	Contract Document
Mark	Date
	Description
Issue Dates	



Drawing Title  
**PLUMBING PLAN**

Drawing Number  
**P1**

**MECHANICAL SYSTEMS ENGINEERS**  
 ROYAL RIVER CENTER, UNIT #10  
 10 FOREST FALLS DRIVE  
 YARMOUTH, MAINE 04096  
 FACEBOOK: MECHANICAL SYSTEMS ENGINEERS  
 207-846-1441  
 M.S.E. Proj. 1422  
 © copyright 2014



**PLUMBING FLOOR PLANS**  
 AS NOTED

**P1**

August 21, 2014 11:01 am \\MESEFS1\shared\Projects\1422 U-Haul\Drawings\1422-P1.dwg