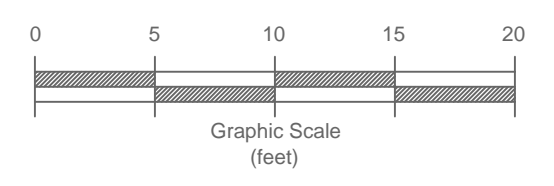
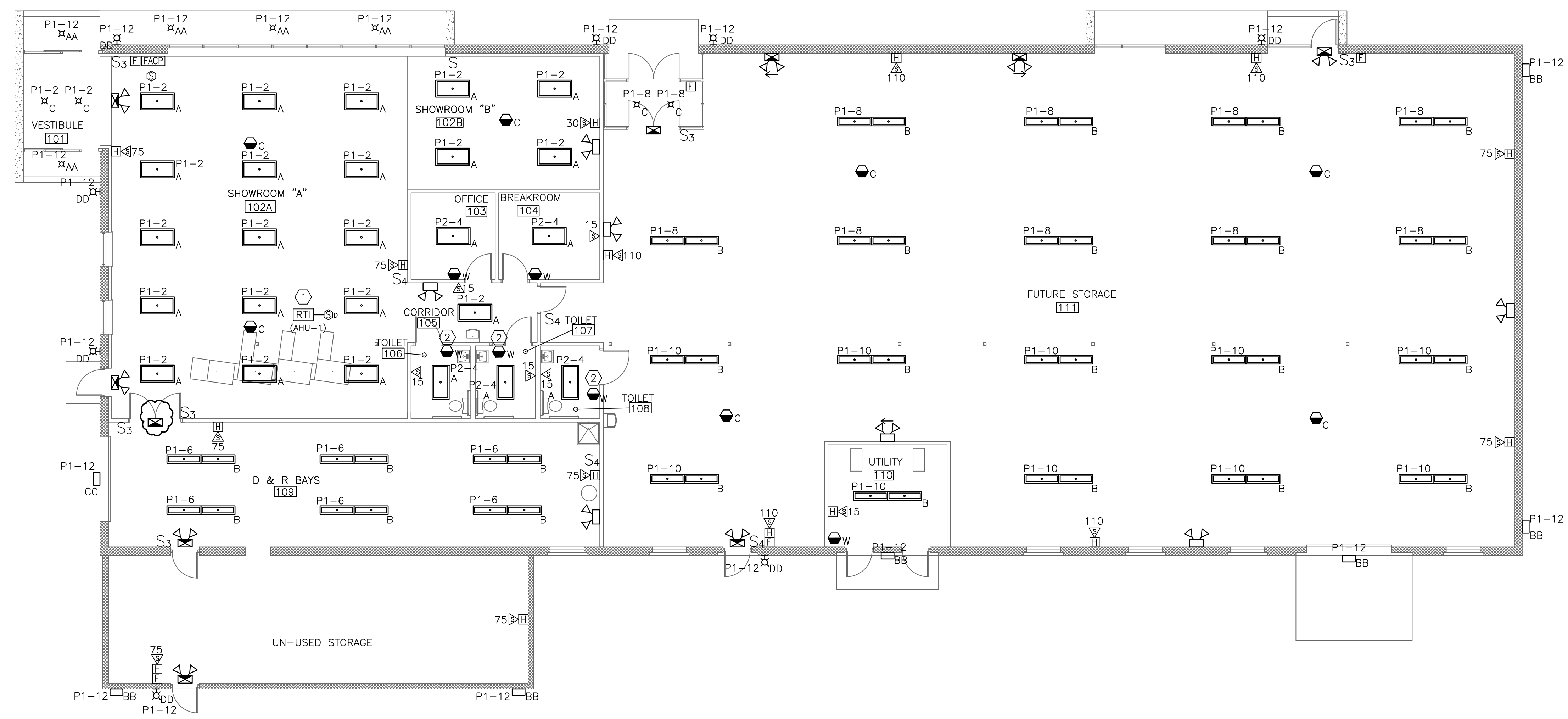


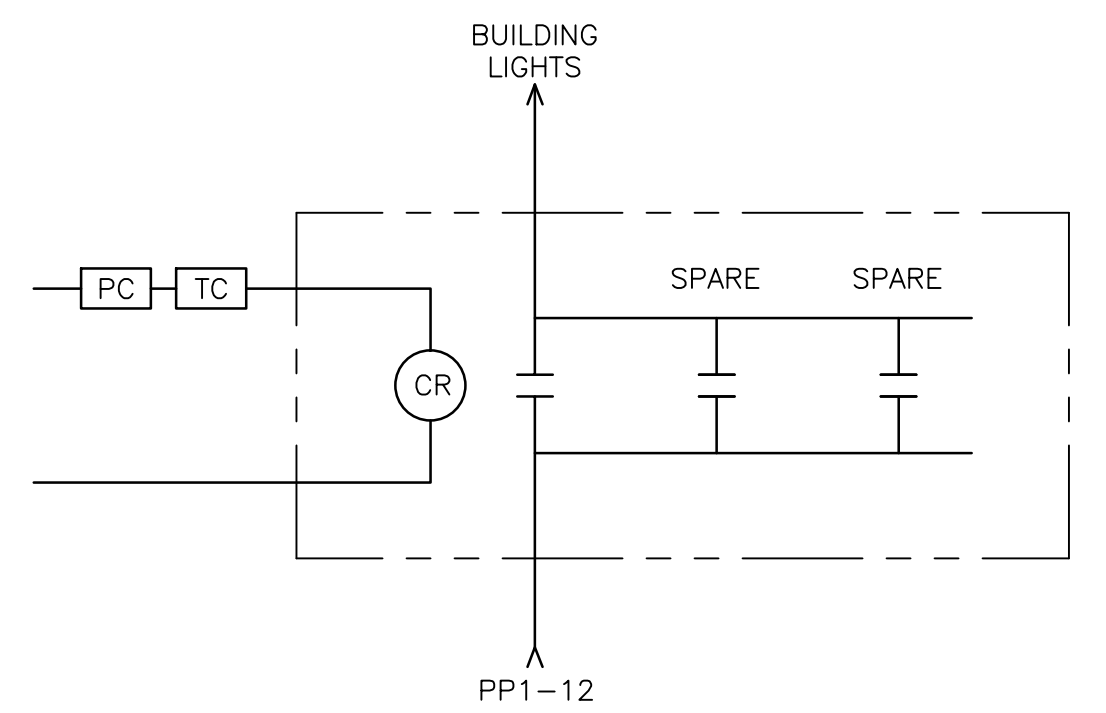
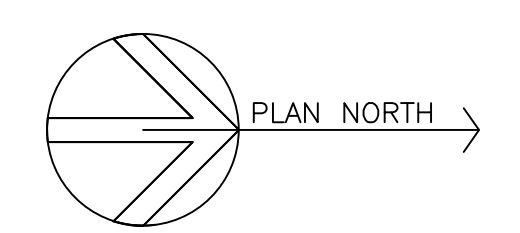
- NOTES:**
- SEE E0.0 FOR LEGEND, ABBREVIATIONS AND GENERAL NOTES.
  - WIRE EMERGENCY EXIT SIGNS AND LIGHTS TO LOCAL LIGHTING CIRCUIT.

- KEYED NOTES:**
- MOUNT REMOTE TEST INDICATOR AT FIRE ALARM CONTROL PANEL.
  - LIGHTING SWITCH IN ANY OF THE THREE BATHROOMS SHALL BE WIRED TO A RELAY TO TURN EF-1 ON. FURNISH A 2-POLE OCCUPANCY SENSOR IN THESE ROOMS. WIRE THE SECOND POLE ON THESE SWITCHES IN PARALLEL AND WIRE TO RELAY FOR TURNING ON THE FAN. RELAY TO BE FURNISHED BY ELECTRICAL.



ISSUE FOR CONSTRUCTION

**1 ELECTRICAL LIGHTING & FIRE ALARM PLAN**  
SCALE: 1/8" = 1'-0"



**2 EXTERIOR LIGHTING CONTROLS**  
SCALE: NOT TO SCALE

	<b>ROBERT J. FOSTER ARCHITECT</b> 36 Groveside Road, Portland, Maine 04102 (207) 761-3822	<b>U-HAUL MOVING &amp; STORAGE</b> 425 MARGINAL WAY Portland, Maine	Drawing Title <b>ELECTRICAL LIGHTING &amp; FIRE ALARM PLAN</b>									
	9/4/14		Drawing Number <b>E2.0</b>									
<table border="1"> <thead> <tr> <th>Mark</th> <th>Date</th> <th>Description</th> </tr> </thead> <tbody> <tr> <td>1</td> <td>09 - 26 - 14</td> <td>REVISED EXIT SIGN</td> </tr> <tr> <td>0</td> <td>09 - 1 - 14</td> <td>ISSUE FOR CONSTRUCTION</td> </tr> </tbody> </table>			Mark	Date	Description	1	09 - 26 - 14	REVISED EXIT SIGN	0	09 - 1 - 14	ISSUE FOR CONSTRUCTION	Issue Dates
Mark	Date	Description										
1	09 - 26 - 14	REVISED EXIT SIGN										
0	09 - 1 - 14	ISSUE FOR CONSTRUCTION										