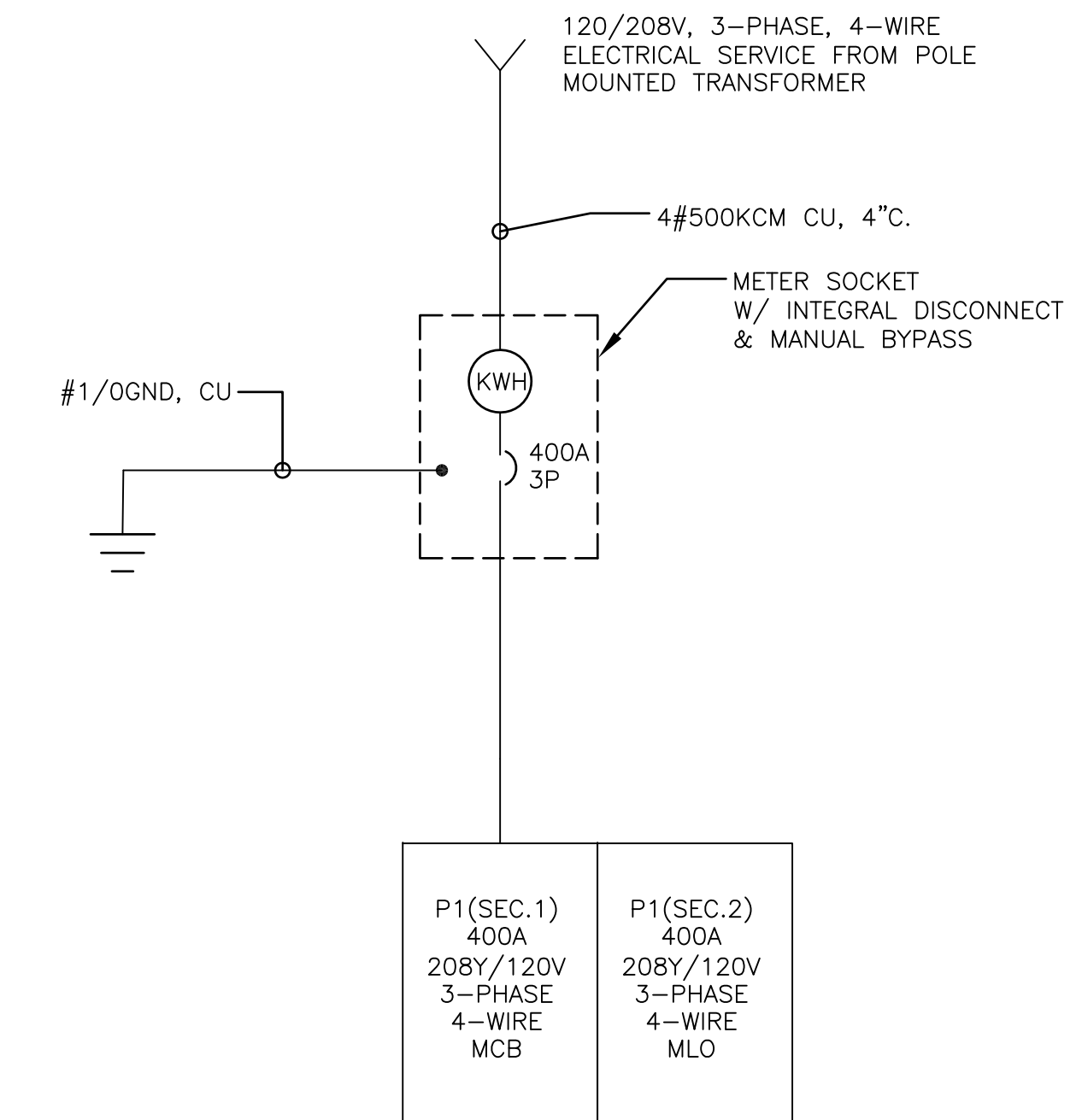


**NOTES:**

- SEE E0.0 FOR LEGEND, ABBREVIATIONS AND GENERAL NOTES.

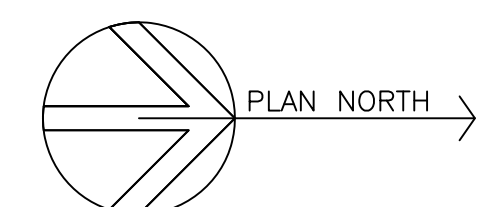
DIRECTORY	KVA LOAD			CKT #	BKR AMPS	PHASE	BKR AMPS	CKT #	KVA LOAD			DIRECTORY	
	A	B	C						A	B	C		
SHOWROOM A RECEPTS.	1.2			1	20	A	20	2	1.3			SHOWROOM A, SHOWROOM B, VESTIBULE, CORRIDOR LTS.	
SHOWROOM B, CORRIDOR, FUTURE STORAGE RECEPTS.		1.4		3	20	B	20	4		0.3		OFFICE, BREAKROOM, TOILETS LTS.	
VESTIBULE SLIDING DOOR OPERATOR			1.0	5	20	C	20	6			0.8	D&R BAYS LTS.	
VESTIBULE SLIDING DOOR OPERATOR	1.0			7	20	A	20	8	1.1			FUTURE STORAGE LTS.	
CUSTOMER SERVICE DESK POWER FEED		1.0		9	20	B	20	10		1.2		FUTURE STORAGE, UTILITY LTS.	
CUSTOMER SERVICE DESK POWER FEED			1.0	11	20	C	20	12			0.6	EXTERIOR LTS.	
CUSTOMER SERVICE DESK POWER FEED	1.0			13	20	A	20	14	1.0			WEST SIGN	
OFFICE RECEPTS.		0.6		15	20	B	20	16		1.0		NORTH SIGN	
BREAKROOM RECEPTS.			0.4	17	20	C	20	18			0.6	ROOFTOP RECEPTACLES	
BREAKROOM COUNTER RECEPTS.	0.8			19	20	A	20	20	*			SPARE	
D&R BAYS, FUTURE STORAGE RECEPTS.		0.8		21	20	B	20	22		*		SPARE	
D&R BAYS RECEPTS.			0.8	23	20	C	20	24			*	SPARE	
D&R BAYS OVERHEAD DOOR	1.2			25	20	A	20	26	*			SPARE	
D&R BAYS VEHICLE LIFT		1.0		27	20	B	20	28		*		SPARE	
			1.0	29	20	C	20	30			*	SPARE	
				31	30	A	20	32	*			SPARE	
D&R BAYS AIR COMPRESSOR	1.5			33	30	B	20	34		*		SPARE	
UTILITY ROOM RECEPTS.			0.4	35	20	C	20	36		*		SPARE	
FUTURE STORAGE RECEPTS.	0.8			37	20	A	20	38	*			SPARE	
FUTURE STORAGE RECEPTS.		0.6		39	20	B	20	40		*		SPARE	
TOILET RECEPTS.			0.6	41	20	C	20	42			*	SPARE	
<b>SUBTOTAL</b>	<b>7.5</b>	<b>6.9</b>	<b>5.2</b>						<b>3.4</b>	<b>2.5</b>	<b>2.0</b>	<b>SUBTOTAL</b>	
VOLTAGE: 208Y/120V PHASE: 3 POLES: 4				TOTAL KVA A-PHASE				10.9				PANEL	
MAIN BREAKER: 400A BUS AMPS: 400A				TOTAL KVA B-PHASE				9.4				P1 (SECTION 1)	
MOUNTING: SURFACE				TOTAL KVA C-PHASE				7.2				LOCATION	
SHORT CIRCUIT RATING: 10KAIC				TOTAL KVA				27.5				UTILITY ROOM	
NOTES:													

DIRECTORY	KVA LOAD			CKT #	BKR AMPS	PHASE	BKR AMPS	CKT #	KVA LOAD			DIRECTORY	
	A	B	C						A	B	C		
AHU-1	6.0			43	60	A	40	44	3.3			AHU-3	
		6.0		45		B		46		3.3			
			6.0	47		C		48			3.3		
AHU-2	3.3			49	40	A	20	50	0.2			EF-1	
		3.3		51		B		52		0.9			
			3.3	53		C		54			0.5		
SPARE	*			55	20	A	20	56	0.1			UH-2	
SPARE		*		57	20	B	30	58		2.3		WH-1	
SPARE			*	59	20	C	30	60			2.3		
SPARE	*			61	20	A	20	62	*			SPARE	
SPARE		*		63	20	B	20	64		*		SPARE	
SPARE			*	65	20	C	20	66			*	SPARE	
SPARE	*			67	20	A	20	68	*			SPARE	
SPARE		*		69	20	B	20	70		*		SPARE	
SPARE			*	71	20	C	20	72			*	SPARE	
SPACE	*			73		A		74	*			SPACE	
SPACE		*		75		B		76		*		SPACE	
SPACE			*	77		C		78		*		SPACE	
SPACE	*			79		A		80	*			SPACE	
SPACE		*		81		B		82		*		SPACE	
SPACE			*	83		C		84			*	SPACE	
<b>SUBTOTAL</b>	<b>9.3</b>	<b>9.3</b>	<b>9.3</b>						<b>3.6</b>	<b>6.5</b>	<b>6.1</b>	<b>SUBTOTAL</b>	
VOLTAGE: 208Y/120V PHASE: 3 POLES: 4				TOTAL KVA A-PHASE				12.9				PANEL	
MAIN LUGS ONLY BUS AMPS: 400A				TOTAL KVA B-PHASE				15.8				P1 (SECTION 2)	
MOUNTING: SURFACE				TOTAL KVA C-PHASE				15.4				LOCATION	
SHORT CIRCUIT RATING: 10KAIC				TOTAL KVA				44.1				UTILITY ROOM	
NOTES:													



**1** ELECTRICAL RISER DIAGRAM  
NOT TO SCALE

ISSUE FOR CONSTRUCTION



<p>9/4/14</p>	<p><b>ROBERT J. FOSTER ARCHITECT</b> 36 Groveside Road, Portland, Maine 04102 (207) 761-3822</p>	<p>Project Title</p> <p><b>U-HAUL MOVING &amp; STORAGE</b> 425 MARGINAL WAY Portland, Maine</p>	<table border="1"> <tr> <th>Mark</th> <th>Date</th> <th>Description</th> </tr> <tr> <td></td> <td>09 - 1 - 14</td> <td>ISSUE FOR CONSTRUCTION</td> </tr> <tr> <td></td> <td>07 - 18 - 14</td> <td>PROGRESS DRAWING</td> </tr> </table>	Mark	Date	Description		09 - 1 - 14	ISSUE FOR CONSTRUCTION		07 - 18 - 14	PROGRESS DRAWING	<p>Drawing Title</p> <p><b>PANEL SCHEDULES</b></p>
	Mark	Date	Description										
	09 - 1 - 14	ISSUE FOR CONSTRUCTION											
	07 - 18 - 14	PROGRESS DRAWING											
	<p>10 Forest Falls Drive, Unit 4B Yarmouth, ME 04096 Tel: (207) 847-9280</p>		<p>Issue Dates</p>	<p>Drawing Number</p> <p><b>E1.2</b></p>									