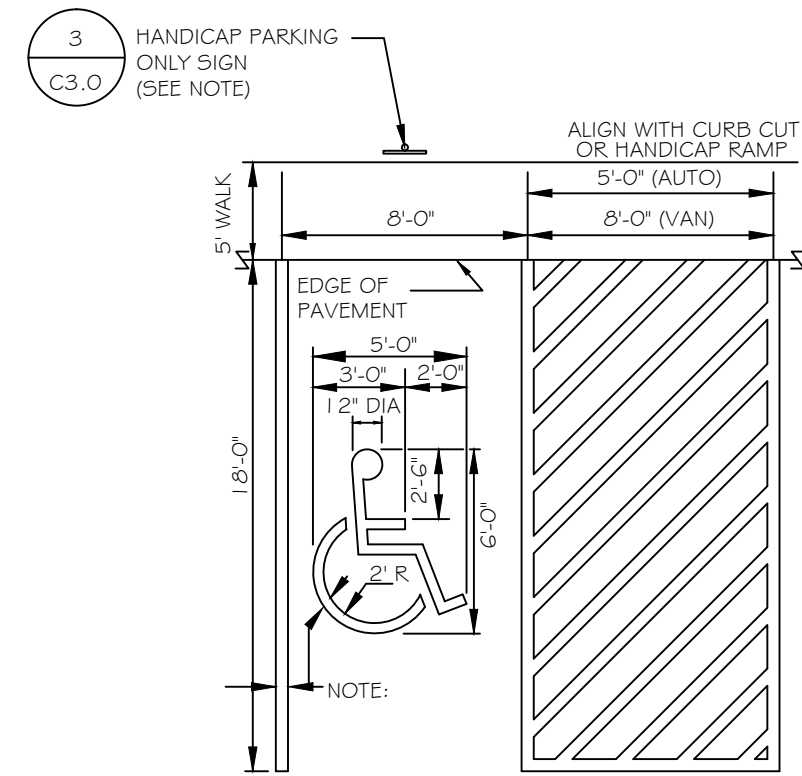
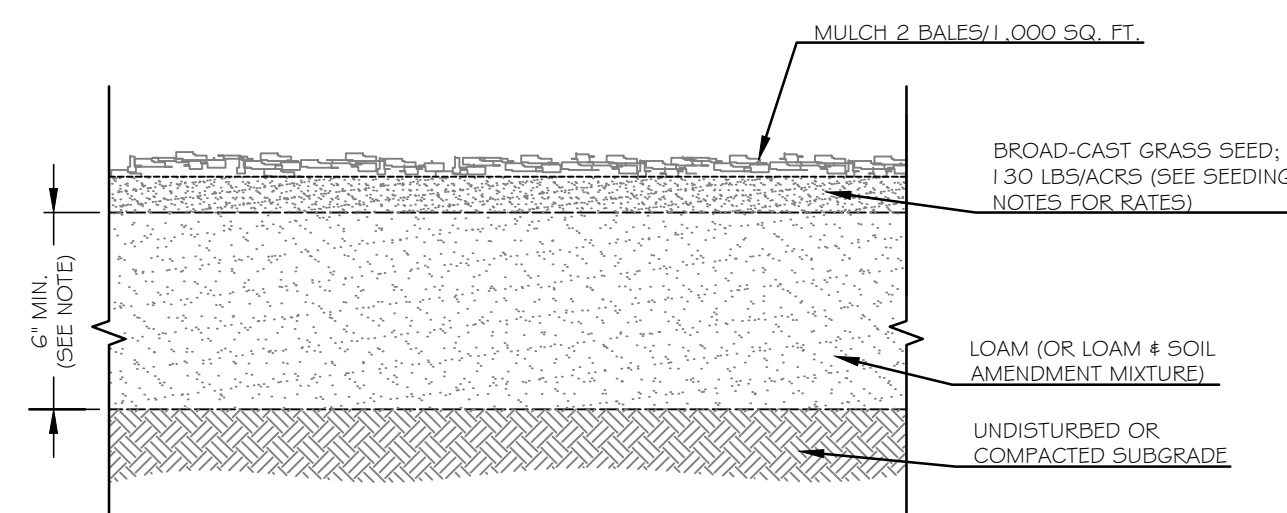


1 TYPICAL SIDEWALK - PEDESTRIAN RAMP AT CROSSWALK
C3.0 NOT TO SCALE

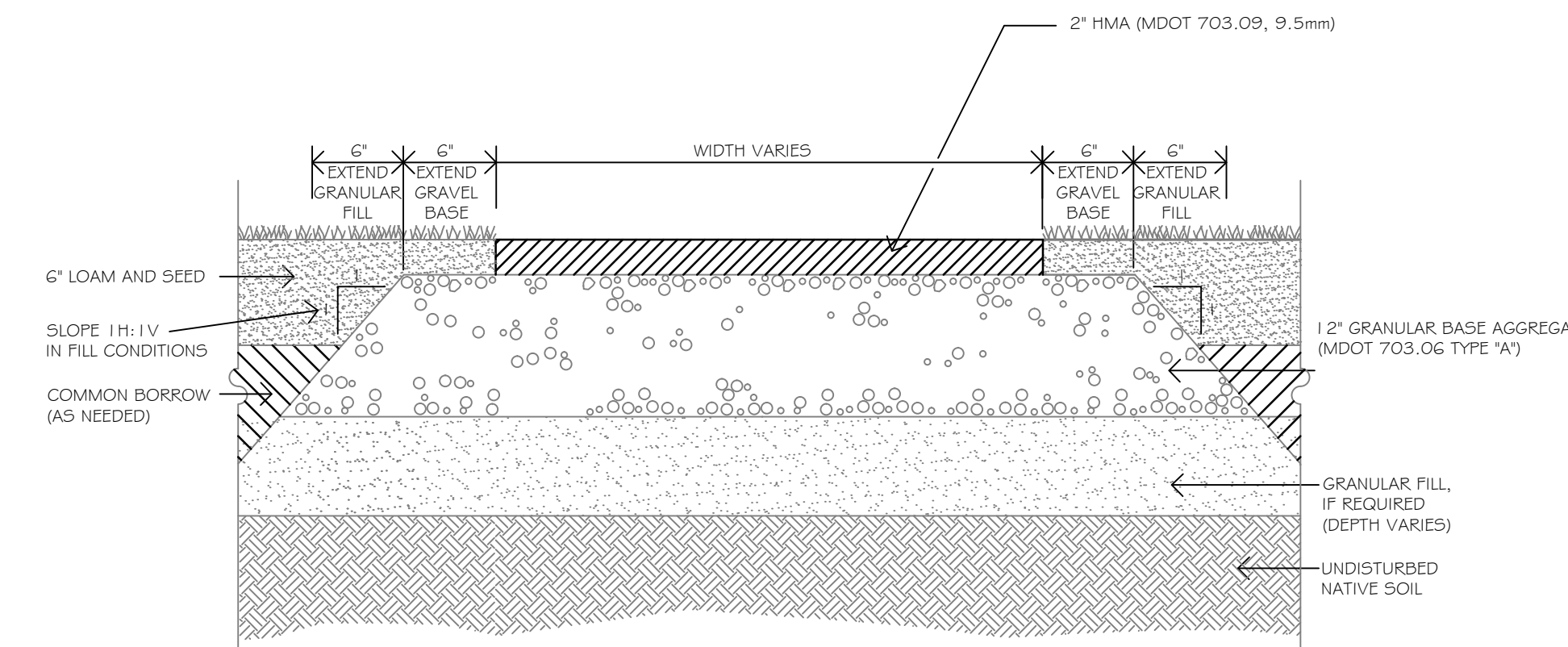


NOTE:
1. ALL ACCESSIBLE PARKING SPACE SIGNS SHALL BE MUTCD R7-8, 'VAN ACCESSIBLE' PLAQUES (MUTCD R7-8P) SHALL BE PROVIDED FOR ALL SPACES WITH AN 8' WIDE (OR WIDER) AISLE.
2. PAINT ALL PAVEMENT STRIPES AND LINES 4 INCHES WIDE (TYP.)
3. ALL ACCESSIBLE PARKING SPACES SHALL MEET MOST RECENT ADA STANDARDS FOR ACCESSIBLE DESIGN.

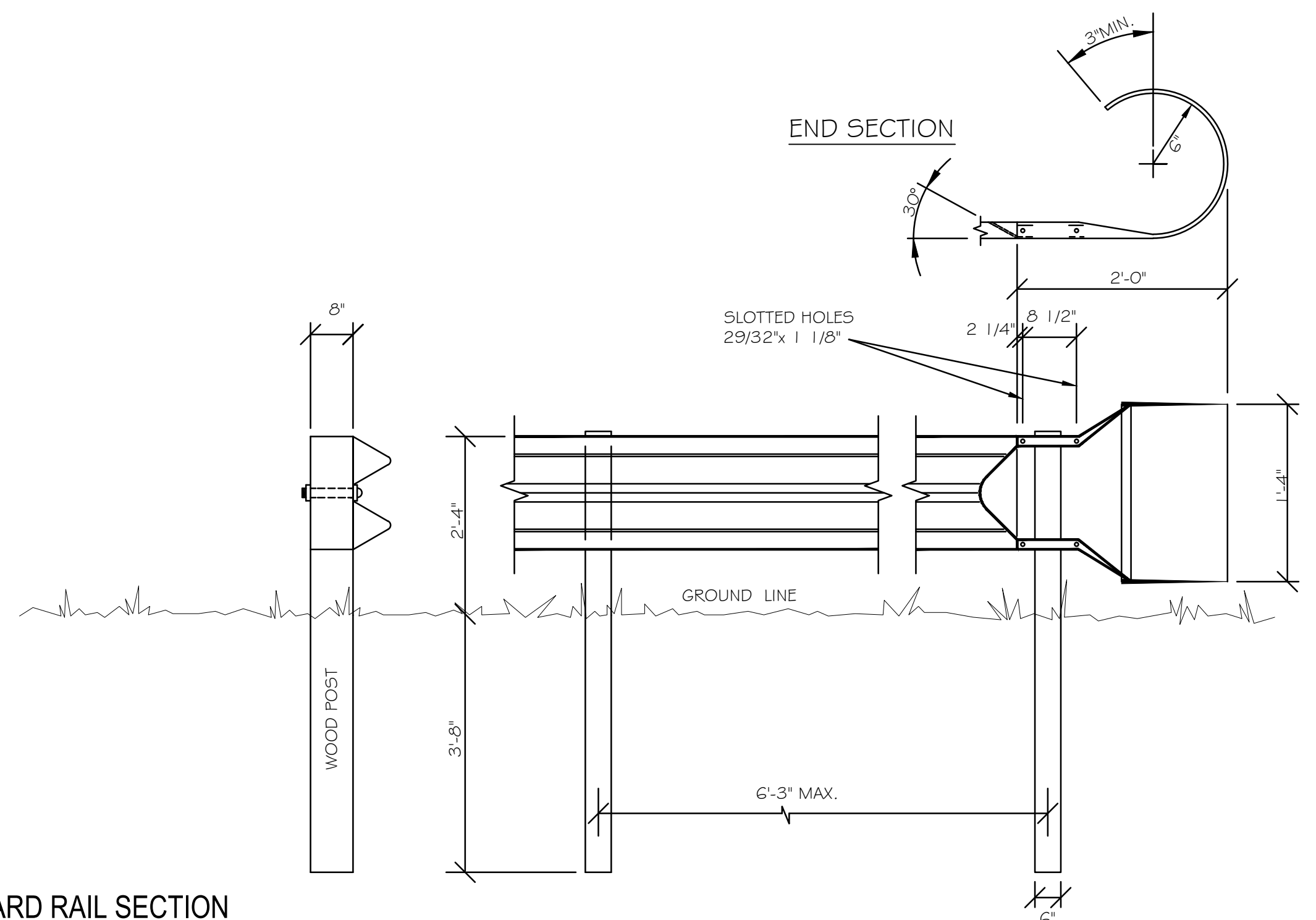
4 ACCESSIBLE PARKING STALL DETAIL
C3.0 NOT TO SCALE



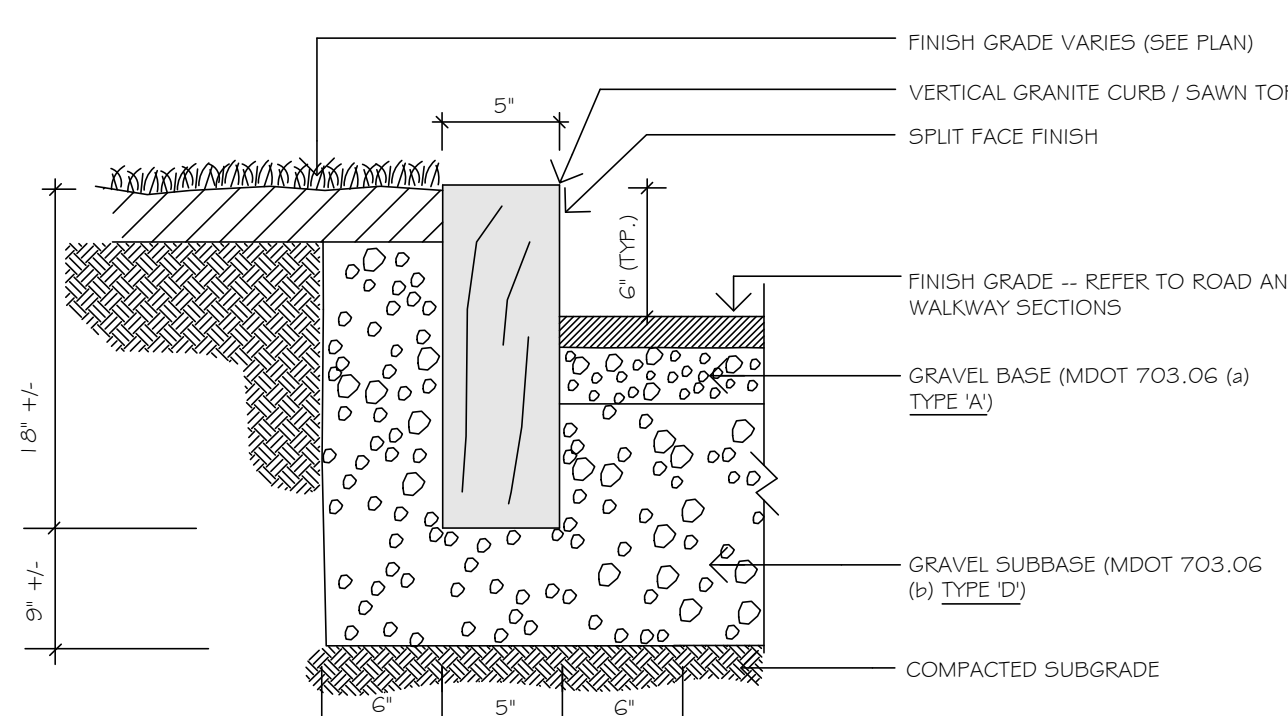
5 LOAM AND SEED DETAIL
C3.0 NOT TO SCALE



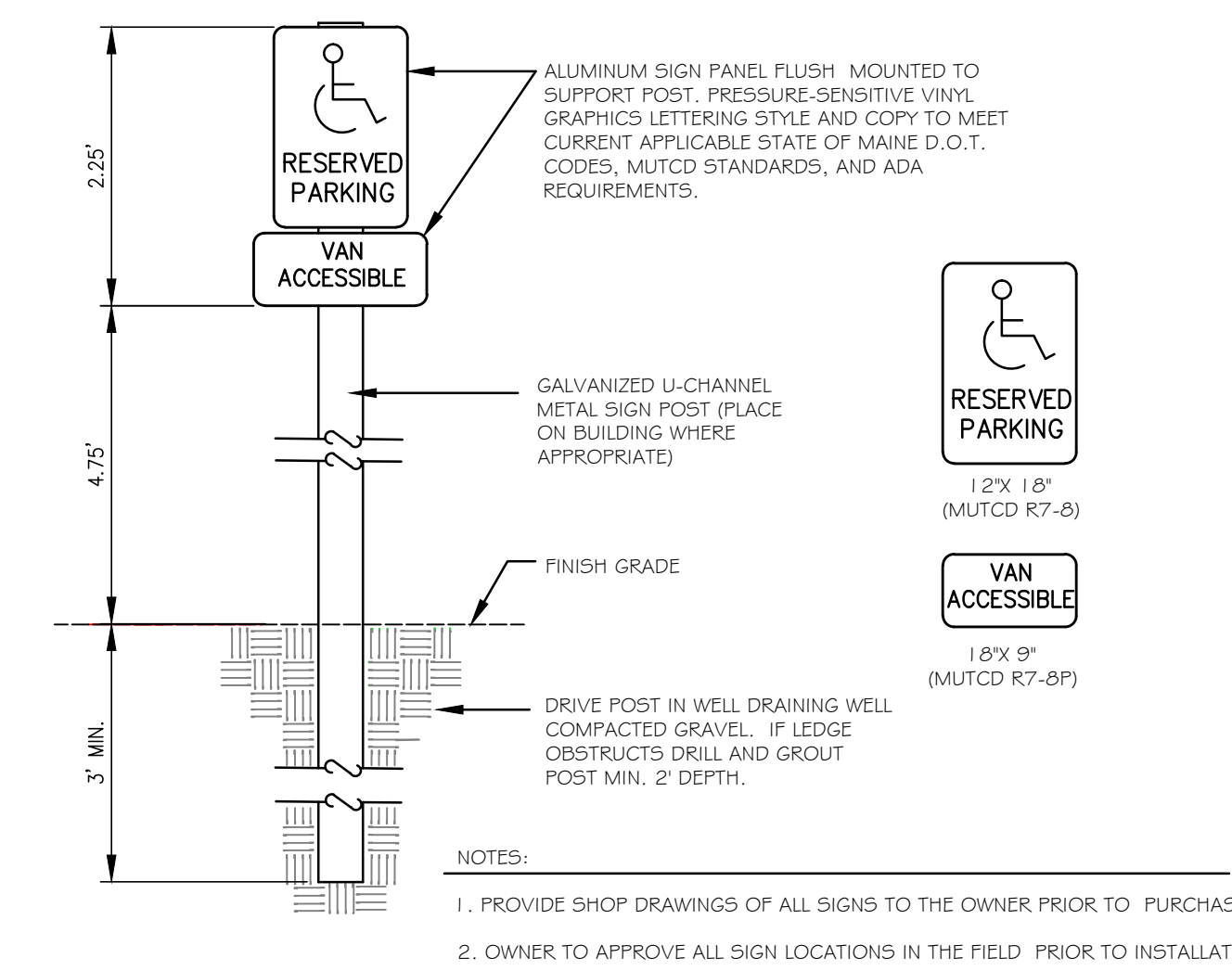
2 BITUMINOUS CONCRETE WALKWAY PAVING SECTION
C3.0 NOT TO SCALE



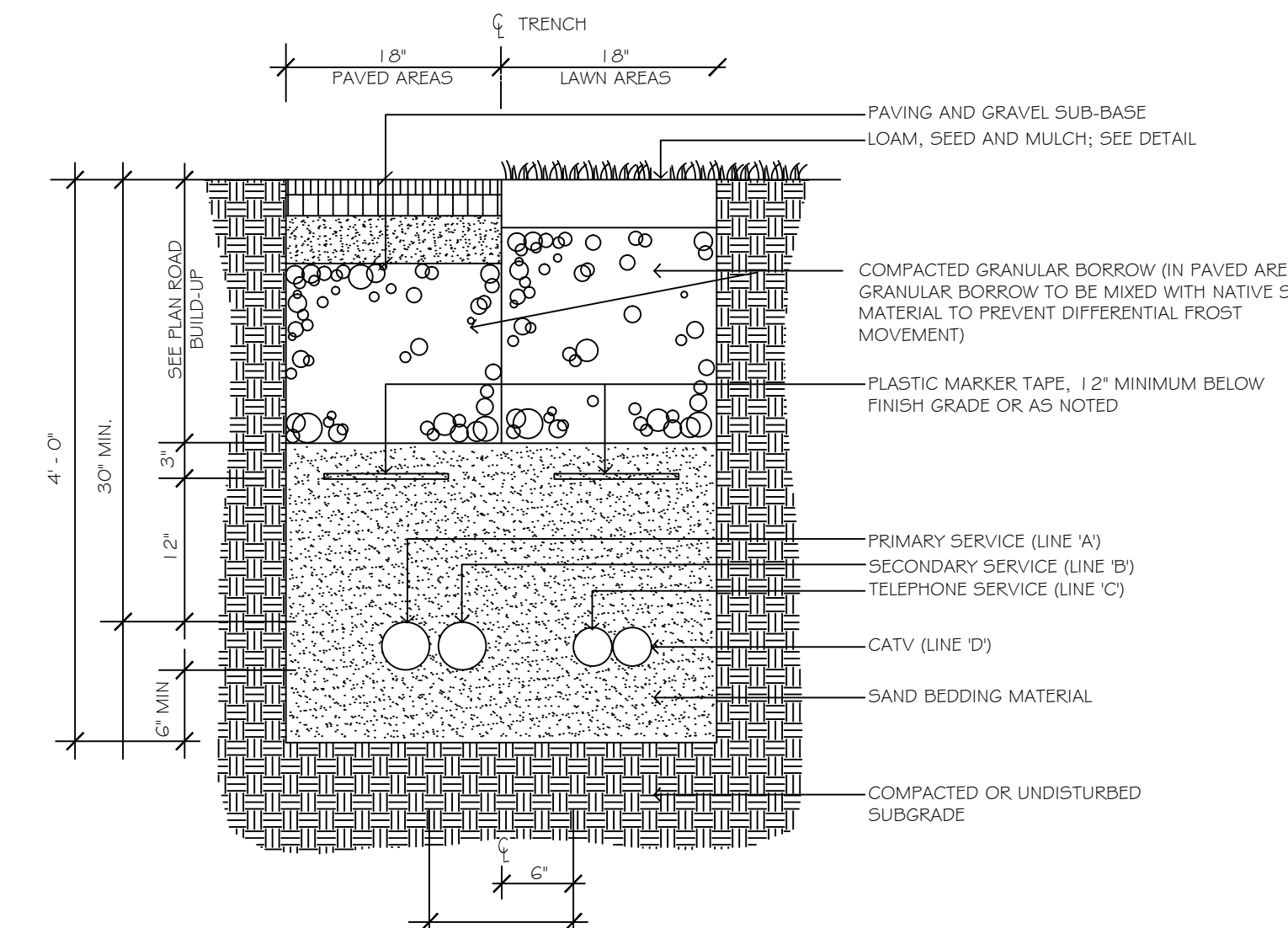
6 GUARD RAIL SECTION
C3.0 NOT TO SCALE



8 VERTICAL GRANITE CURBING
C3.0 NOT TO SCALE



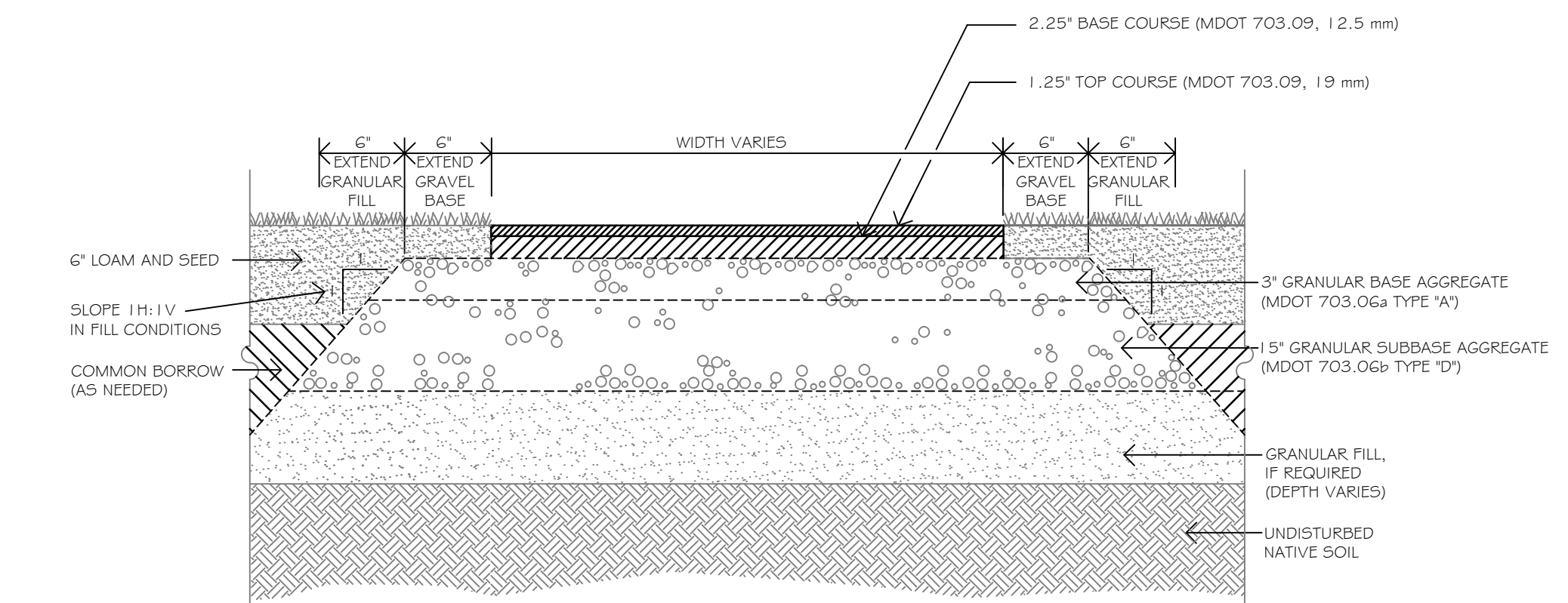
3 ADA SIGNAGE DETAIL
C3.0 NOT TO SCALE



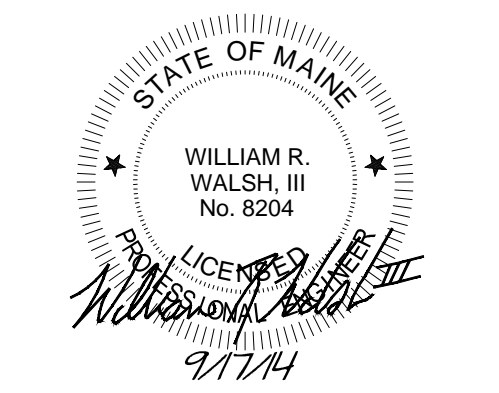
SERVICE	CONDUIT SIZE	CONDUIT TYPE	UTILITY
'A'	4"	SCHEDULE 40 P.V.C. ELECTRICAL GRADE	PRIMARY POWER
'B'	4"	SCHEDULE 40 P.V.C. ELECTRICAL GRADE	SECONDARY POWER
'C'	3"	SCHEDULE 40 P.V.C. ELECTRICAL GRADE	TELEPHONE
'D'	3"	SCHEDULE 40 P.V.C. ELECTRICAL GRADE	CATV

NOTES:
1. CONDUIT SIZES TO BE AS LISTED ABOVE UNLESS OTHERWISE NOTED ON PLANS.
2. ALL WORK SHALL COMPLY WITH THE RESPECTIVE UTILITY COMPANY STANDARDS.
3. SEE UTILITIES PLANS FOR CONDUIT LOCATIONS.
4. CONTRACTOR TO PROVIDE 1/4" POLYPROPYLENE PULL ROPES IN ALL CONDUITS.

7 UNDERGROUND UTILITY TRENCH (MULTIPLE PIPE)
C3.0 NOT TO SCALE



9 BITUMINOUS CONCRETE PARKING LOT PAVING SECTION
C3.0 NOT TO SCALE



U-Haul Moving & Storage at Rte 295
425 Marginal Way
Portland, Maine 04101

Uhaul Co. of New Hampshire & Maine
515 South Willow Street
Manchester, NH 03103

Rev.	Date	Description	Drawn	Check
1	8/17/14	Submitted for Level 1 Site Plan Application	SWC	WRW

Sheet Title:

Details

Job No.:	264	Sheet No.:	
Date:	SEP. 17, 2014	Scale:	AS NOTED
Drawn:	SWC	Checked:	WRW

C3.0