

Project Title

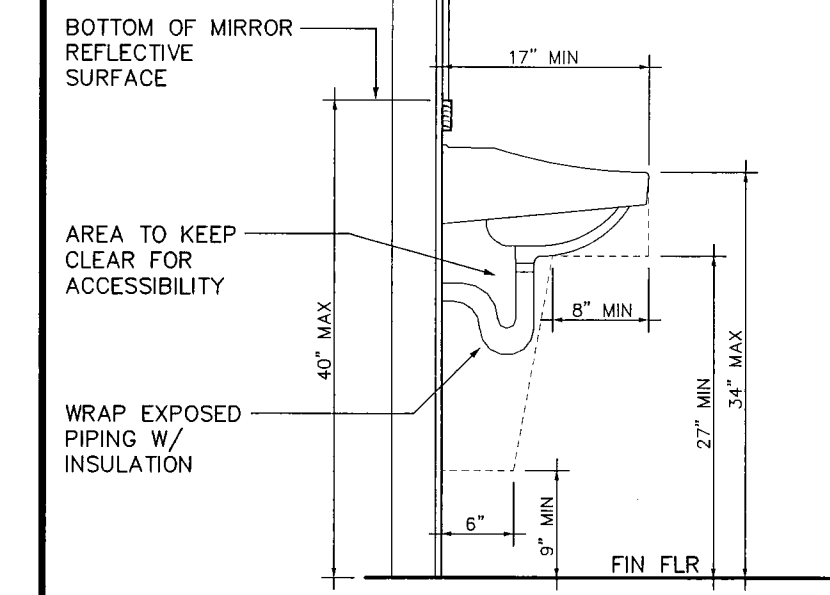
**U-HAUL MOVING  
&  
STORAGE**

425 MARGINAL WAY  
Portland, Maine

**LAVATORY SECTION**

1/4" = 1'-0"

D1



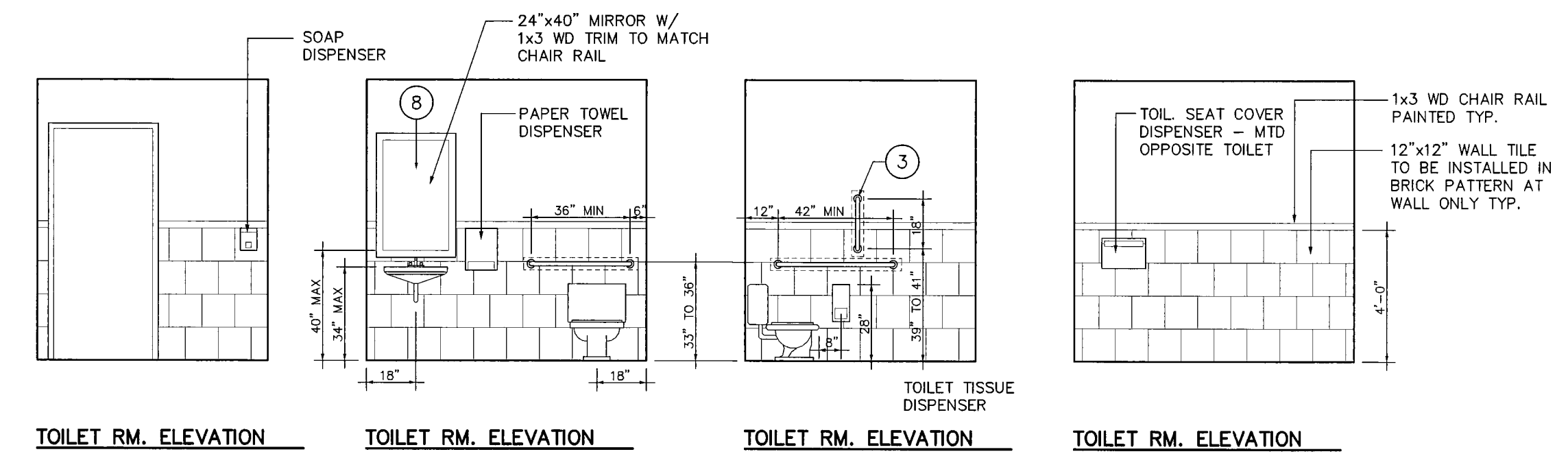
**LEGEND - TOILET RM ACCESSORIES**

ITEMS	MANUF. NO.	MTD. HEIGHTS
① 42" X 1 1/2" GRAB BAR	BOBRICK B-6806.99	34" A.F.F. TO C.L.
② 36" X 1 1/2" GRAB BAR	BOBRICK B-6806.99	34" A.F.F. TO C.L.
③ 18" X 1 1/2" GRAB BAR	BOBRICK B-6806.99	40" A.F.F. TO BOT.
④ TOILET TISSUE DISPENSER	BOBRICK B-5288	28" A.F.F. TO TOP
⑤ PAPER TOWEL DISPENSER	BOBRICK B-52860	PER MANUF. INSTRUCTIONS
⑥ SOAP DISPENSER	BOBRICK B-5050	PER MANUF. INSTRUCTIONS
⑦ TOILET SEAT COVER DISPENSER	BOBRICK B-5221	45" A.F.F. TO TOP
⑧ 24"W X 40"H MIRROR	N.A.	3'-3" TO BOT. OF GLASS

**ACCESSORIES SCHEDULE**

N.A.

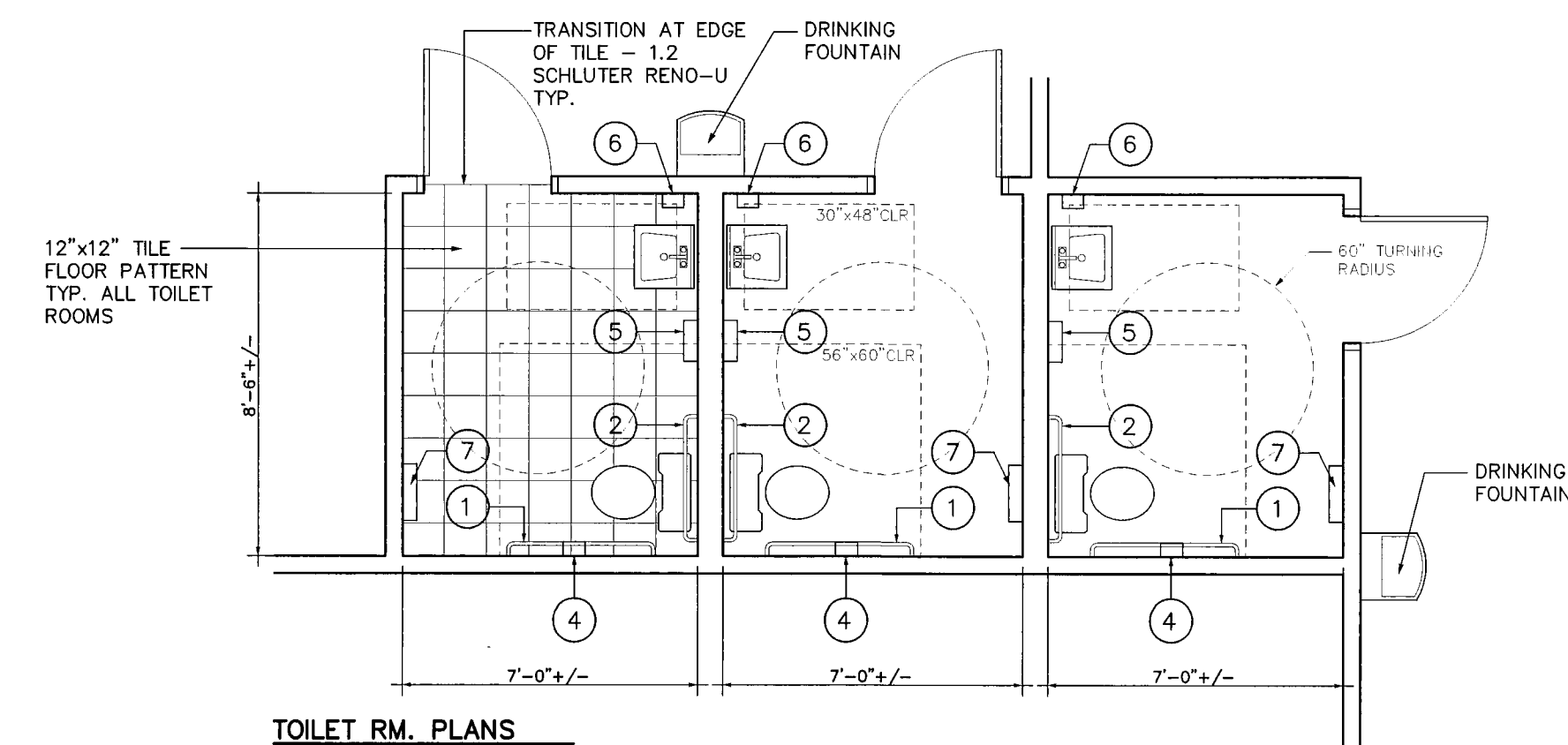
C1



**TYP. TOILET ROOM ELEVATIONS**

1/4" = 1'-0"

B1



**TOILET RMS 106, 107 & 108**

1/4" = 1'-0"

A1

09 - 08 - 14 ISSUED FOR CONSTRUCTION

Mark Date Description

Issue Dates

Drawing Title

**ENLARGED PLANS  
& DETAILS**

Drawing Number

**A90.1**