

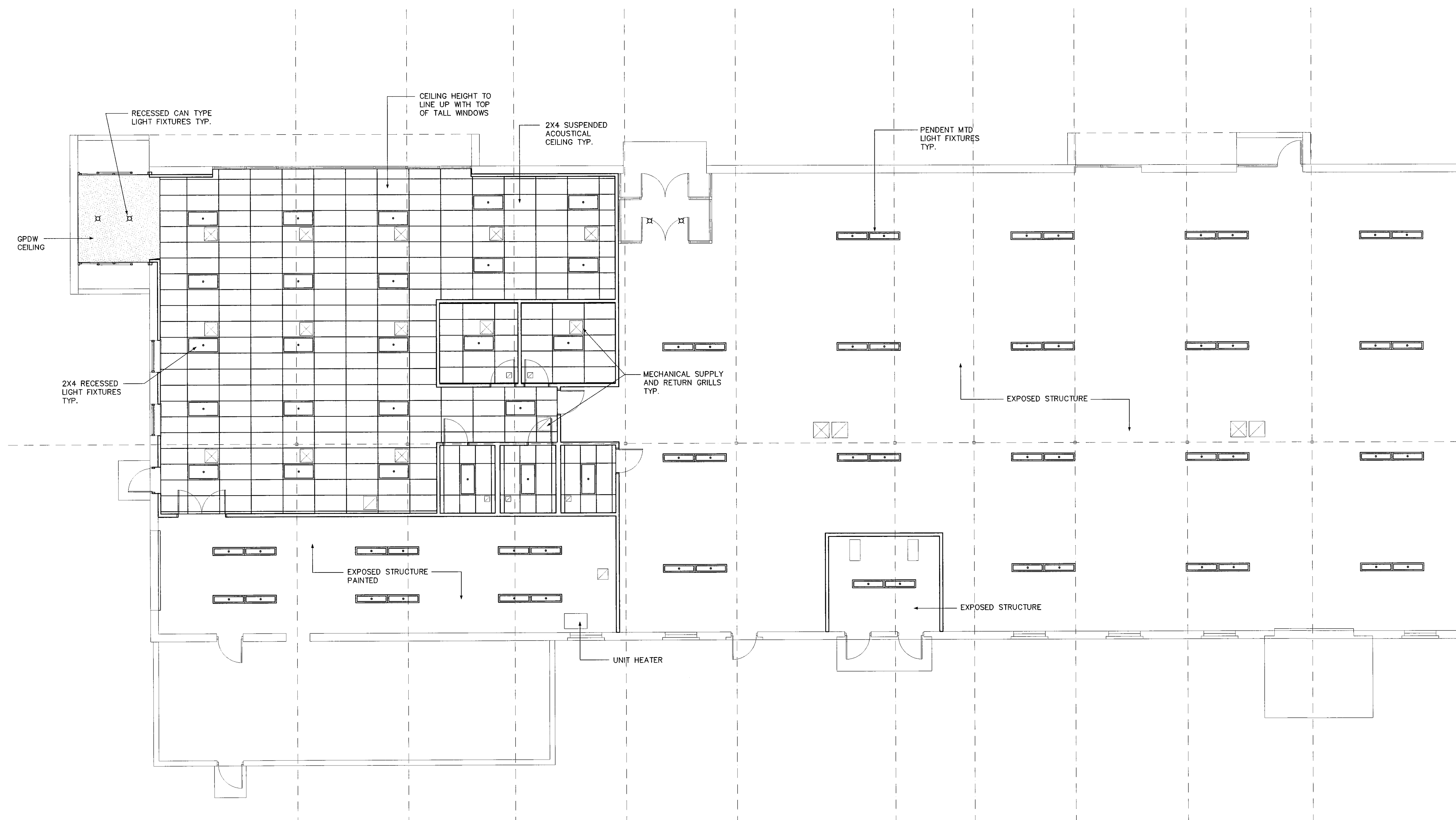
Project Title

# U-HAUL MOVING & STORAGE

425 MARGINAL WAY  
Portland, Maine

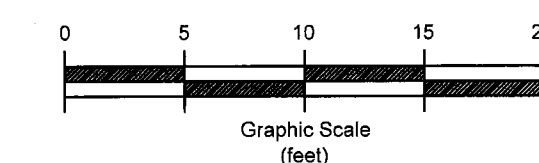
## GENERAL NOTES

- REFER TO ROOM FINISH SCHEDULES ON SHT A60.1 FOR CEILING HEIGHTS UNLESS NOTED OTHERWISE.
- REFER TO MECHANICAL & ELECTRICAL DRAWINGS FOR ADDITIONAL INFORMATION AND CO-ORDINATION.
- CONSTRUCT 5/8" FIRE RATED BOXES BEHIND ANY RECESSED LIGHTS OR OTHER RECESSED ELEMENTS TO MAINTAIN REQ'D FIRE RATINGS.
- PROVIDE ACCESS PANELS WHERE NECESSARY TO ACCESS MECH. AND PLUMBING ITEMS (SHUT OFF VALVES, ETC.). ACCESS PANELS SHALL BE FIRE RATED WHERE PENETRATING FIRE RATED BARRIERS.



Mark	Date	Description
	09 - 08 - 14	ISSUED FOR CONSTRUCTION

Issue Dates



Drawing Title

## REFLECTIVE CLG PLAN

Drawing Number

# A70.1

REFLECTIVE CEILING PLAN

1/8" = 1'-0"

A1