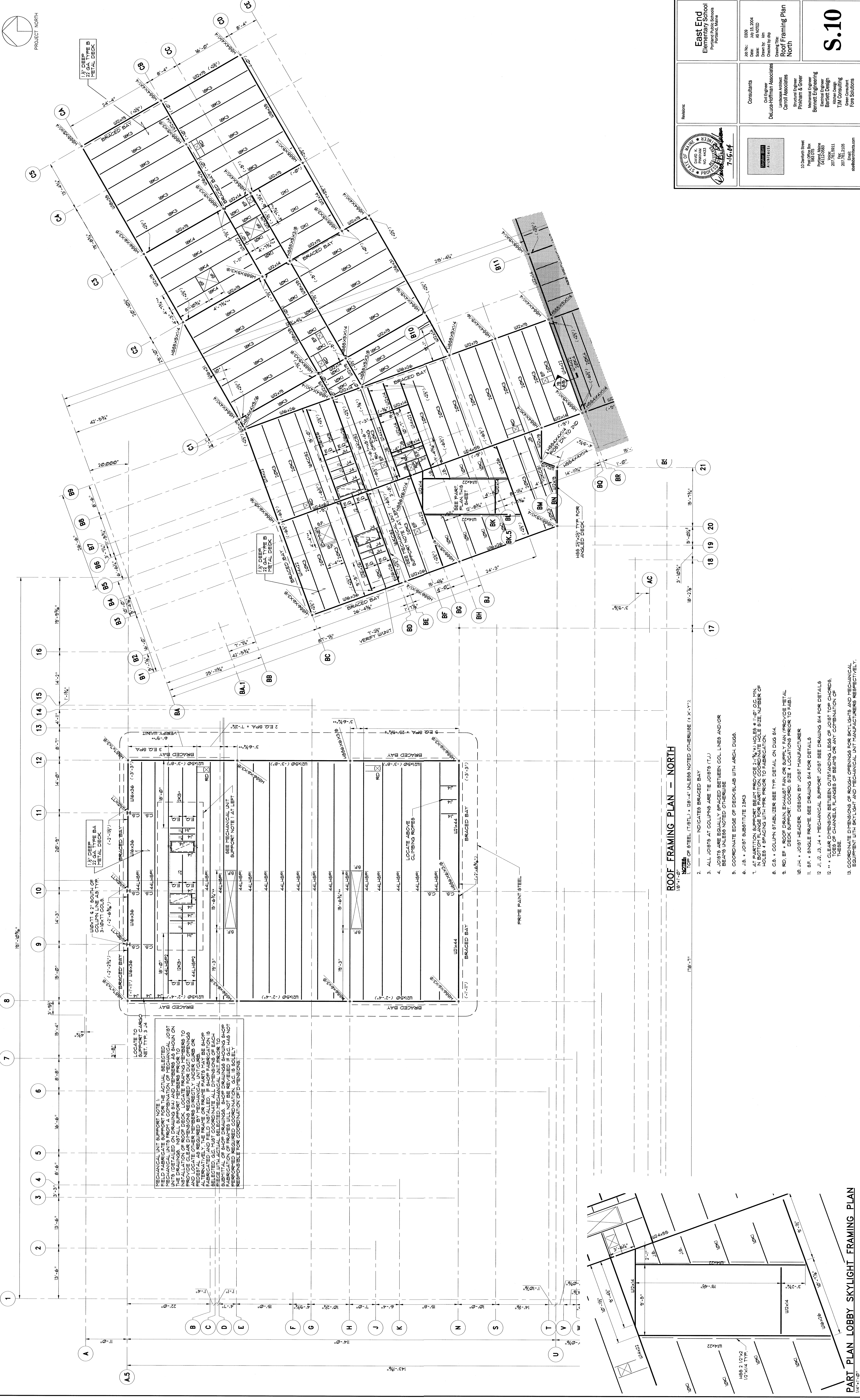


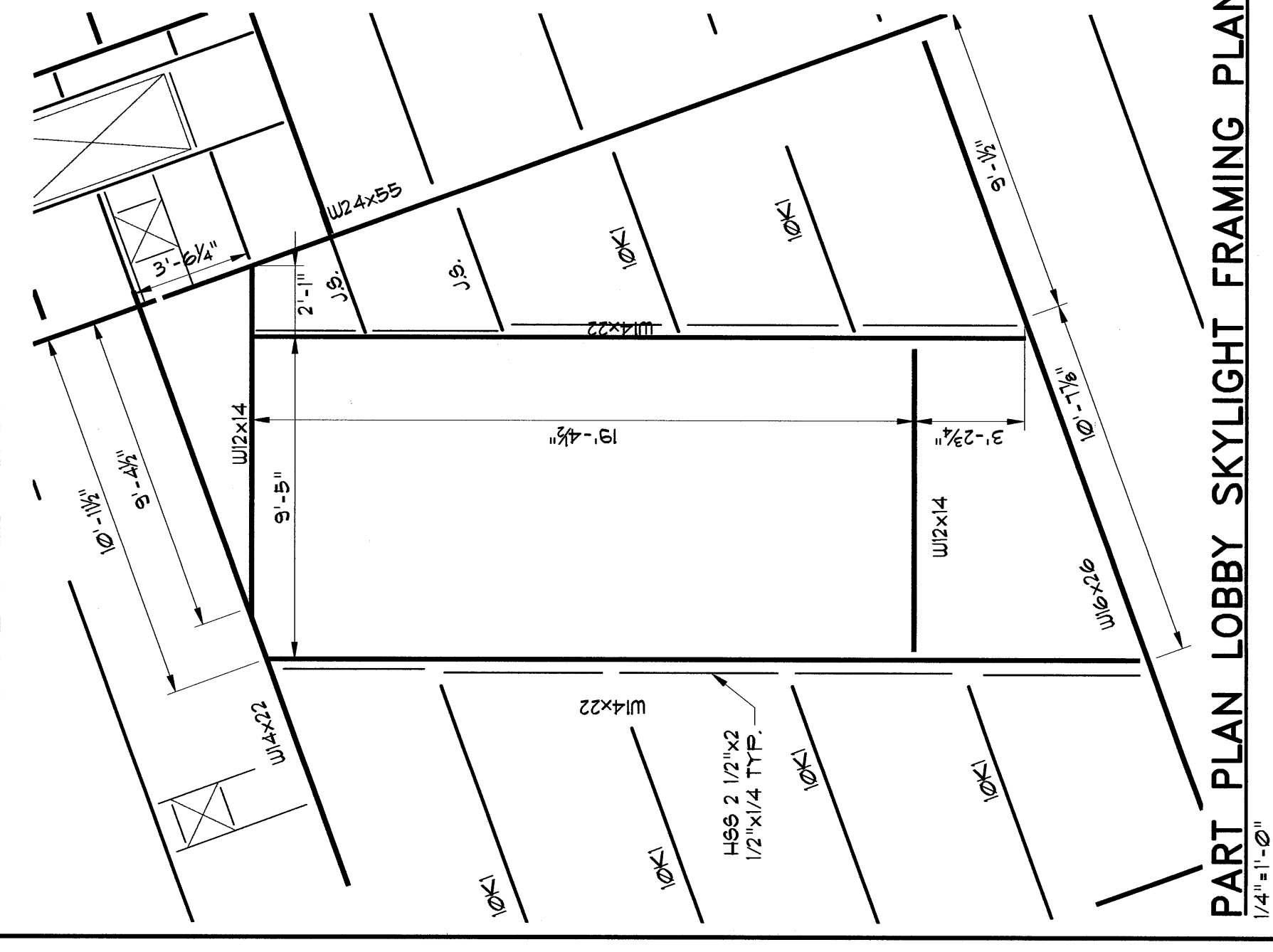
PROJECT NORTH



ROOF FRAMING PLAN - NORTH

- NOTES
1. --- INDICATES BRACED BAY
 2. ALL JOISTS AT COLUMNS ARE TIE JOISTS (T.J.)
 3. JOISTS ARE EQUALLY SPACED BETWEEN COL LINES AND/OR BEAMS UNLESS NOTED OTHERWISE
 4. COORDINATE EDGE OF DECK/SLAB WITH ARCH. DIMS.
 5. JS - JOIST SUBSTITUTE 2BKS
 6. AT PARTITION SUPPORT BEAM PROVIDE 2-1/2" DIA HOLES @ 1'-0" O.C. MIN. IN BOTTOM FLANGE FOR PARTITION COORDINATE HOLE SIZE NUMBER OF HOLES & SPACING WITH TYP. PRIOR TO FABRICATION.
 7. CE - COLUMN STABILIZER SEE TYP. DETAIL ON DWG 914.
 8. RD - ROOF DRAIN EXHAUST FAN OR SUPPLY FAN (PROVIDE METAL DECK SUPPORT, COORD. SIZE & LOCATIONS PRIOR TO FAB.)
 9. J.H. - JOIST HEADER, DESIGN BY JOIST MANUFACTURER
 10. S.F. - SINGLE FRAME, SEE DRAWING 914 FOR DETAILS
 11. J.I. - JOIST INTERLOCK, SEE DRAWING 914 FOR DETAILS
 12. C.D. - CLEAR DIMENSION BETWEEN OUTSTANDING LEGS OF JOIST TOP CHORDS. TOES OF CHANNEL FLANGES OF BEAMS OR ANY COMBINATION OF THESE.
 13. COORDINATE DIMENSIONS OF ROUGH OPENINGS FOR SKYLIGHTS AND MECHANICAL EQUIPMENT WITH SKYLIGHT AND MECHANICAL UNIT MANUFACTURERS RESPECTIVELY.

MECHANICAL UNIT SUPPORT NOTE 1:
 FIELD FABRICATE SUPPORT FOR THE ACTUAL SELECTED MECHANICAL UNIT. LOCATE TO SUPPORT CARDS NEAR INT. 3, 4.
 THE DRAWINGS, INSTALL SUPPORT MEMBERS PRIOR TO PROVIDE CLEAR DIMENSIONS REQUIRED FOR DUCT OPENINGS AND LOCATE OTHER MEMBERS DIRECTLY UNDER CURS OR ALTERNATIVE MEANS TO BE MADE OR SHOWN. ALL DIMENSIONS OF EACH FABRICATED AND FIELD INSTALLED. IF SHOP FABRICATION IS SELECTED, G.C. MUST COORDINATE ALL DIMENSIONS OF EACH FABRICATION OF FRAMES WILL NOT BE REVIEWED IF G.C. HAS NOT RESPONSIBLE FOR COORDINATION OF DIMENSIONS.



	East End Elementary School Portland Public Schools Portland, Maine	JOB NO.: 0309 DATE: July 15, 2004 DRAWN BY: JMA CHECKED BY: SJP DRAWING TITLE: Roof Framing Plan North	<h1>S.10</h1>
	Consultants: Civil Engineer: Deluca-Hoffman Associates Structural Engineer: Cannon Associates Mechanical Engineer: Franklin & Ober Electrical Engineer: Barlett Design Architect: Kitzmeyer Design T.J.M. Consulting Green Consultant: F&E SOLUTIONS		