

PROJECT NORTH

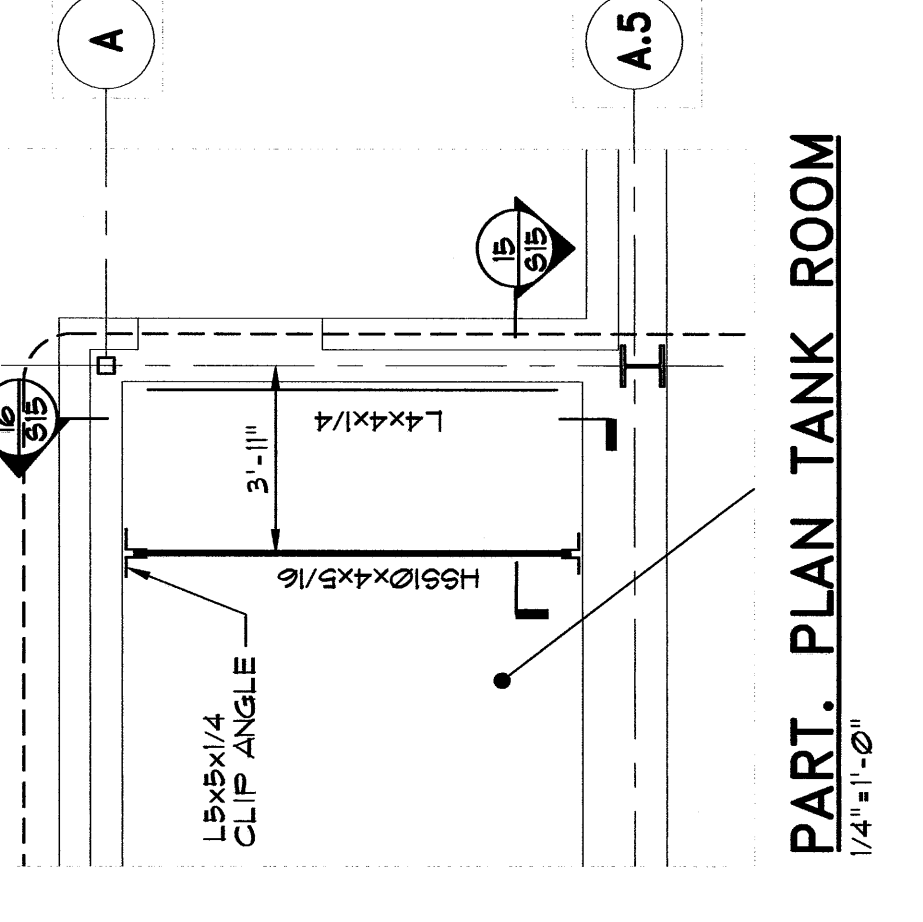
East End Elementary School Portland Public Schools Portland, Maine		S.8 Second Floor/Low Roof Framing Plan North	
Job No.: 0306 Date: 03/08/2004 Scale: AS NOTED Drawn by: JIM Checked by: GIP		Consultants: Civil Engineer Structural Engineer Mechanical Engineer Electrical Engineer Architectural Designer Fire Solutions	
Drawing Title: Second Floor/Low Roof Framing Plan North		Deluca-Hoffman Associates License No.: 0000000000 Structural Engineer Prinkham & Green Mechanical Engineer Bennett Engineering Electrical Engineer Bartlett Design Architectural Designer Fire Solutions	
		7/15/04	



SECOND FLOOR/LOW ROOF FRAMING PLAN - NORTH
 (1/8" = 1'-0")

NOTES:
 1. TOP OF STEEL (17.67L) + 113'-6 1/2" UNLESS NOTED OTHERWISE (1 X 1' X 1').
 2. --- INDICATES BRACED BAY

- ALL JOISTS AT COLUMNS ARE TIE JOISTS (T.J.)
- JOISTS ARE EQUALLY SPACED BETWEEN COL. LINES AND/OR BEAMS UNLESS NOTED OTHERWISE
- COORDINATE EDGE OF DECK/SLABS WITH ARCH. DIMS.
- J.S. = JOIST SUBSTITUTE 2X8S
- R/D/E/F. = ROOF DRAIN/EXHAUST FAN. (PROVIDE METAL DECK SUPPORT; COORD. SIZE + LOCATION PRIOR TO FAB.). SEE DUGS 8/4.
- 1" x 5" JOIST SEATS ONE OR BOTH ENDS.
- 1" x 5" JOIST DIMENSION BETWEEN FRAMING ANGLES, CHANNELS, OUTSTANDING LEGS OF JOIST TOP CHORDS OR ANY COMBINATION OF THESE.
- R/F OR ROOF FRAME INDICATES METAL DECK SUPPORT AT OPENINGS. COORDINATE SIZE AND LOCATION WITH MECHANICAL UNIT PRIOR TO FABRICATION.
- J.H. = JOIST HEADERS. DESIGN BY JOIST MANUFACTURER.
- S.F. = SINGLE FRAME. SEE DRAWING 8/4 FOR DETAILS. COORD. LOCATION (W/ARCH. DIMS).
- F.F. = FLOOR PENETRATION. PROVIDE METAL DECK SUPPORT AT OPENINGS. COORDINATE SIZE AND LOCATION WITH ARCHITECTURAL, MECHANICAL DRAWINGS AND/OR MECHANICAL UNIT OR DUCT.
- J.L, J.Z, J.4 + MECHANICAL JOISTS. SEE DRAWING 8/4 FOR DETAILS.
- COORDINATE ROUGH OPENING DIMENSIONS FOR SKYLIGHTS AND MECHANICAL UNITS WITH SKYLIGHT AND MECHANICAL UNIT MANUFACTURERS RESPECTIVELY.



PART. PLAN TANK ROOM
 (1/4" = 1'-0")