

MATCH LINE STA 11+50 - FOR CONTINUATION SEE BELOW

**PAVEMENT MARKINGS:**

THE CONTRACTOR IS RESPONSIBLE FOR INSTALLING NEW CROSSWALKS, PARKING SPACE CHEVONS NEAR CROSSWALKS AND A NEW DY CENTERLINE MARKING ALONG NORTH STREET.

**BRICK SIDEWALKS**

BRICK SIDEWALK CONSTRUCTION ARE TO BE CONSTRUCTED AS PART OF A SEPARATE CONTRACT. REFER TO DRAWING C-2 AND CONTRACT MANUAL.

**GRAPHIC SCALE**  
1 inch = 20 ft.

**East End Elementary School**  
Professional Seal  
Professional Engineer  
Professional Surveyor

**NS-C 3**

**CONSULTANTS**  
Civil Engineer  
Landscape Architect  
Surveyor  
Structural Engineer  
Mechanical Engineer  
Electrical Engineer  
Sanitary Engineer  
T.M. Consulting  
Green Consultant  
Fore Solutions

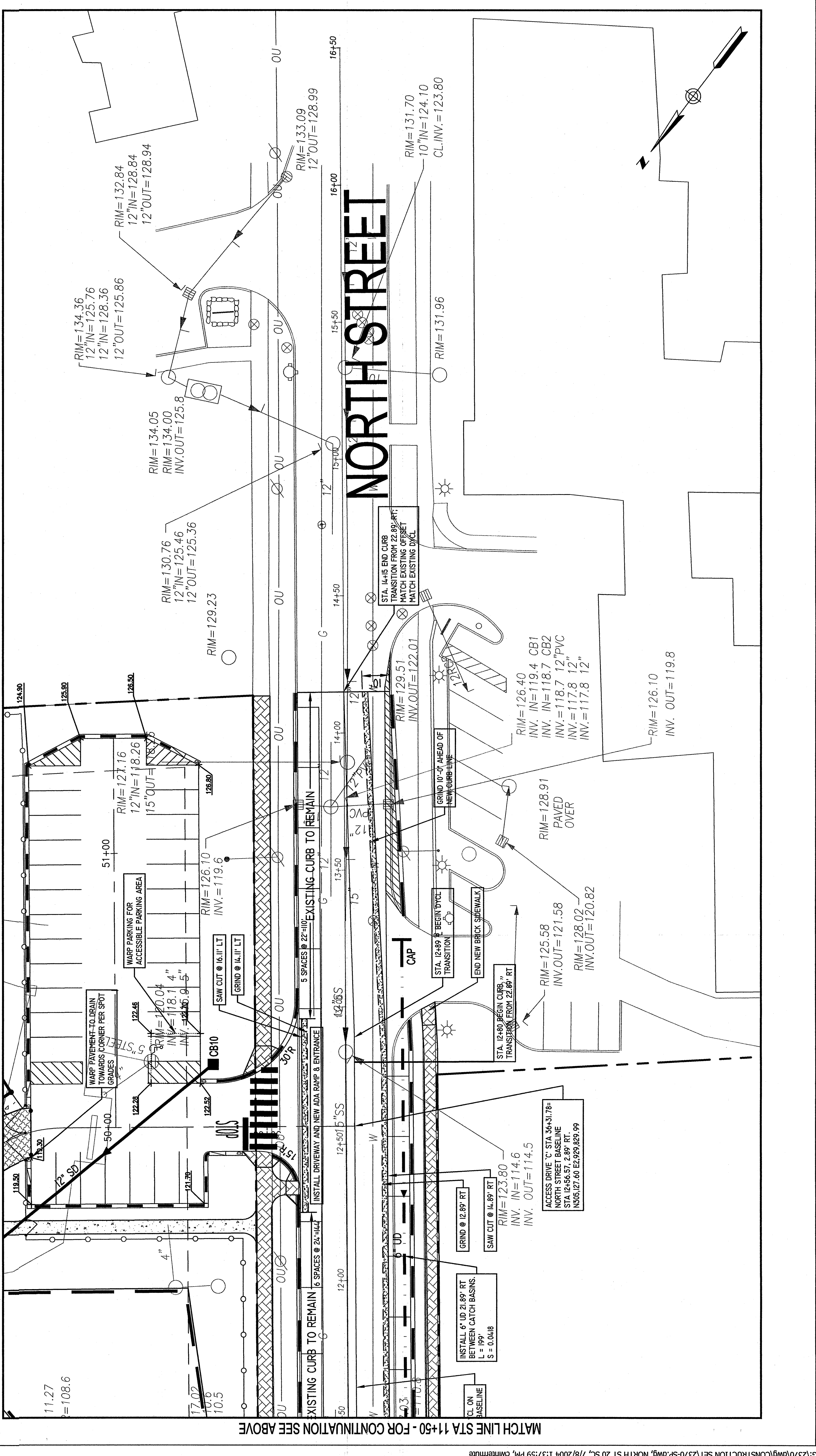
**PROJECT INFORMATION**  
PROJECT NO. 2070  
DATE: February 14, 2014  
DRAWN BY: M. HANSEN  
CHECKED BY: J. HANSEN  
PROJECT: North Street Drainage & Street Improvements

**DESIGNER**  
11 Durham Street  
Portland, ME 04103  
Tel: 603.763.1100  
Fax: 603.763.1101  
www.dh-engineers.com

**APPROVED**  
P.E. WILLIAM C. HOFFMAN  
L.C. #4502

**DE LUCA-HOFFMAN ASSOCIATES, INC.**  
1100 South Portland, ME 04106  
www.delucahoffman.com

- CURBING SCHEDULE - LEFT**
- AHEAD OF STATION 4+63 AND AT POINT - REMOVE AND RESET, ELIMINATE ONE ADA RAMP. INSTALL NEW RAMP @ 4+63 LT.
  - STA. 4+63 TO 5+35.93 LT - EXISTING CURB TO REMAIN.
  - STA. 5+35.93 TO 6+23.93 LT - REMOVE EXISTING CURB TO INSTALL DRIVEWAY AND NEW 25' RADIUS CURB. INSTALL HEADSTONE FOR CB 18 AT 6+19.93 TO 6+23.93 LT.
  - STA. 6+23.93 TO 7+68 LT - EXISTING CURB TO REMAIN.
  - STA. 7+68 TO 11+20 LT - REMOVE AND RESET CURB FOR ADA AREAS, RAMPS AND IN FRONT OF BUS LOOP; INSTALL NEW ADA RAMPS AND RADII INTO NEW BUS DROPOFF LOOP.
  - STA. 11+20 TO 12+25 LT - EXISTING CURB TO REMAIN.
  - STA. 12+25 TO 12+95.75 LT - REMOVE EXISTING CURB. INSTALL NEW RADIAL CURB TO ENTER PARKING LOT, DRIVEWAY AND ADA RAMPS.
  - STA. 12+95.75 TO 14+15 LT - EXISTING CURB TO REMAIN.
- NOTE: CURBING ADJUSTMENTS WILL NEED TO EXTEND BACK TO CLOSEST JOINT OF "CURB TO REMAIN".
- CURBING SCHEDULE - RIGHT**
- AHEAD OF STA. 5+00 RT - INSTALL NEW RADIAL CURB @ ENTRANCE.
  - STA. 5+00 TO 12+95 RT - REMOVE AND RESET CURB FOR WIDENED STREET; INSTALL ADA RAMPS AS REQUIRED.
  - STA. 13+34 TO 14+15 RT - REMOVE AND RESET TANGENT CURB.



MATCH LINE STA 11+50 - FOR CONTINUATION SEE ABOVE