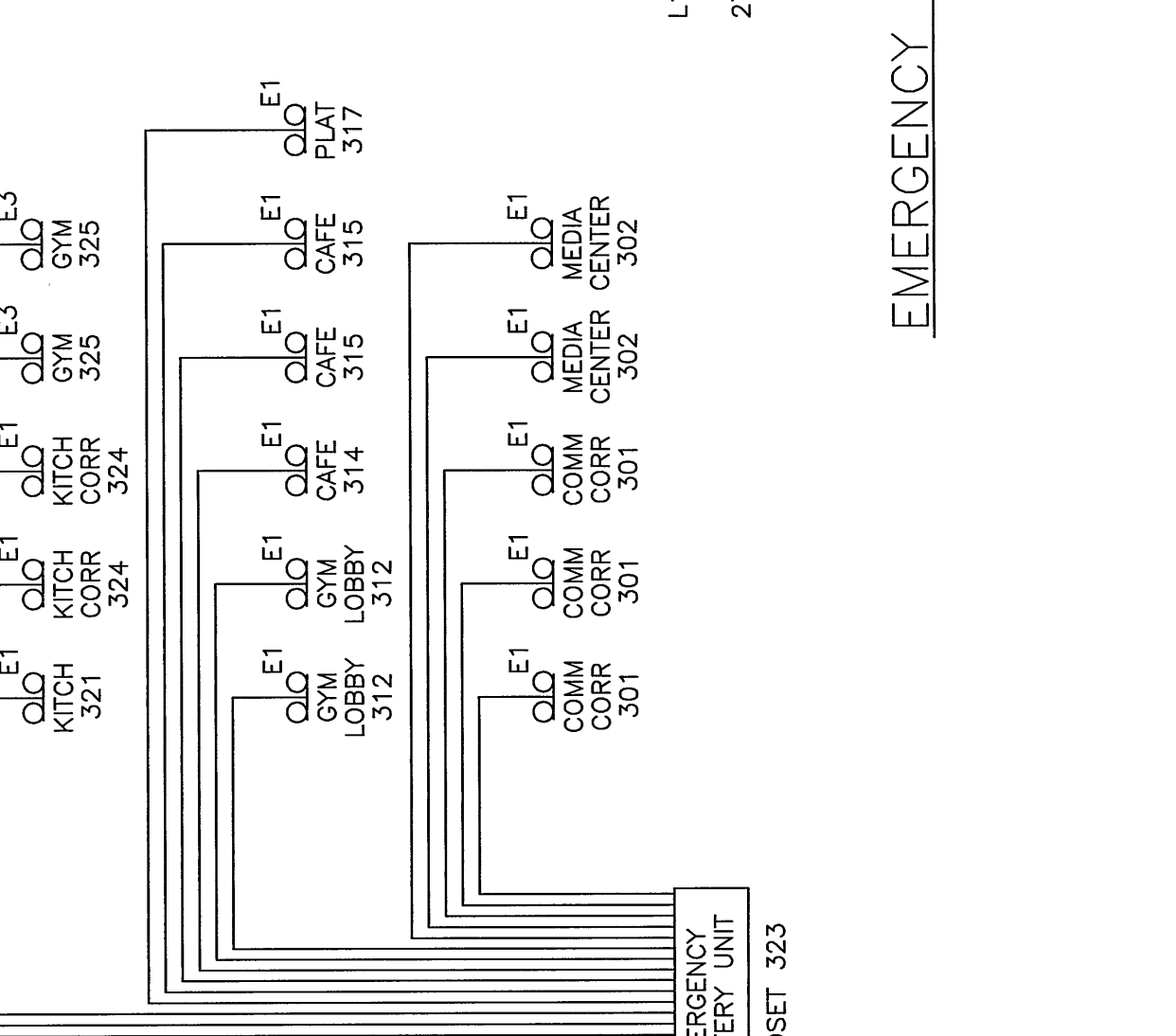
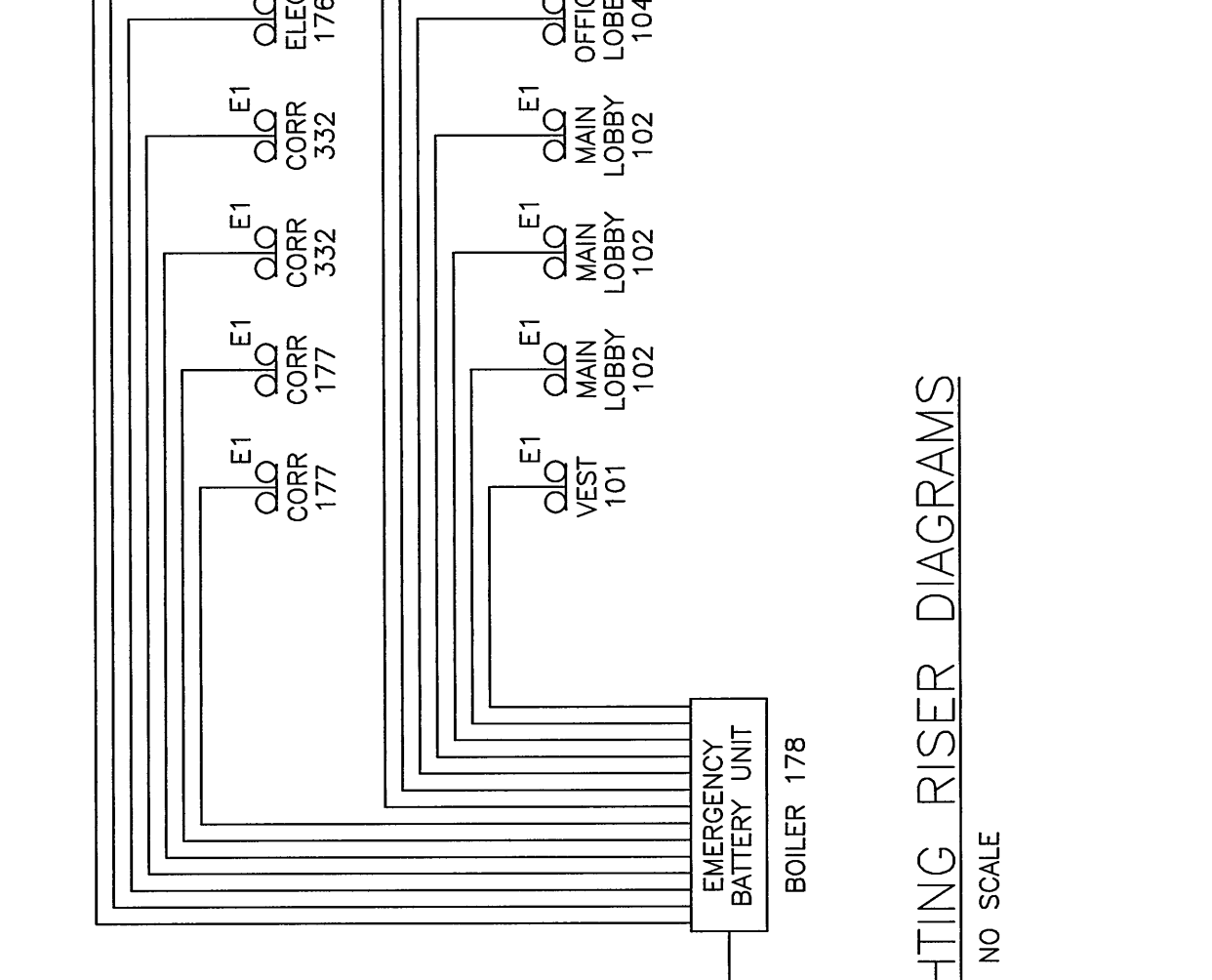
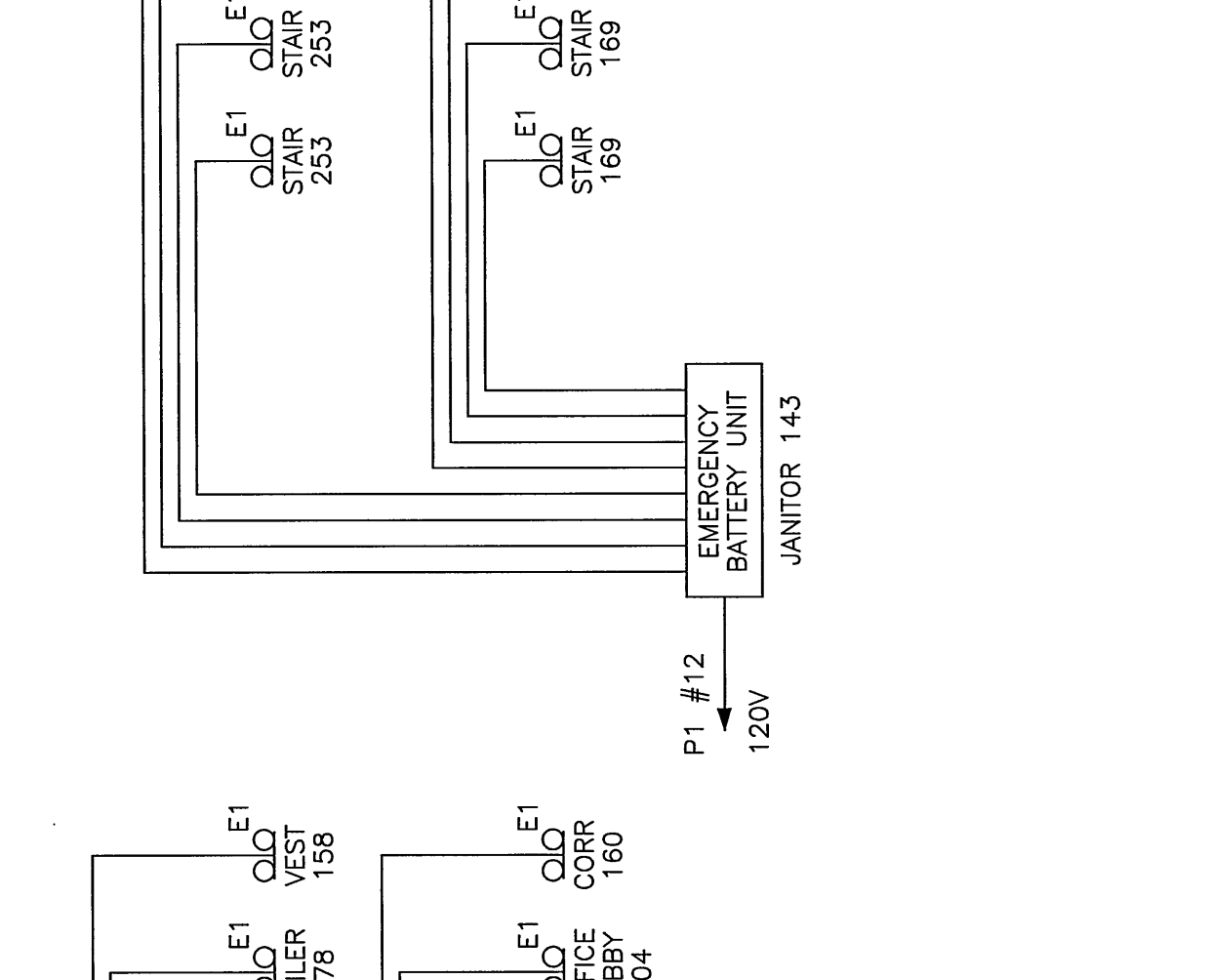
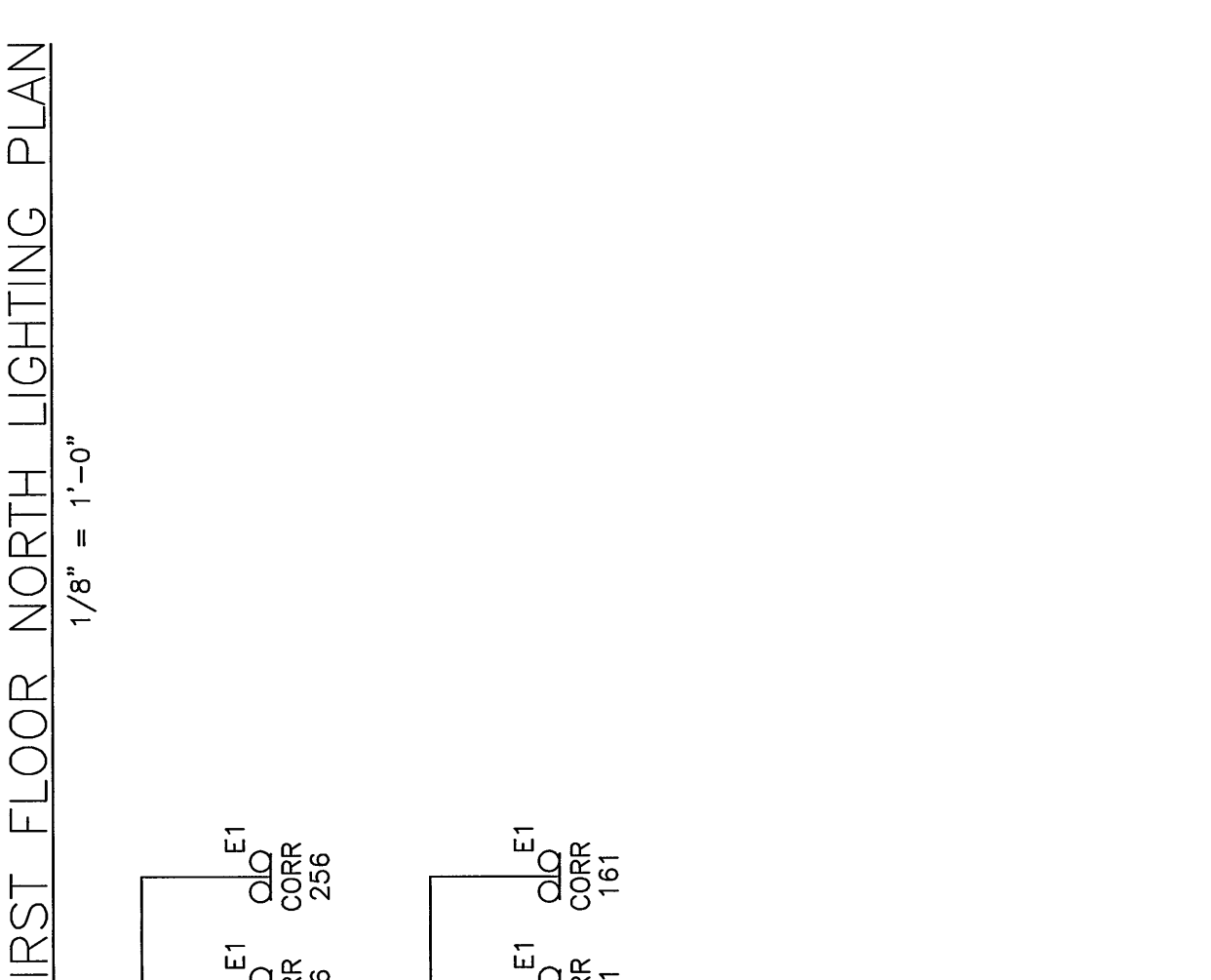
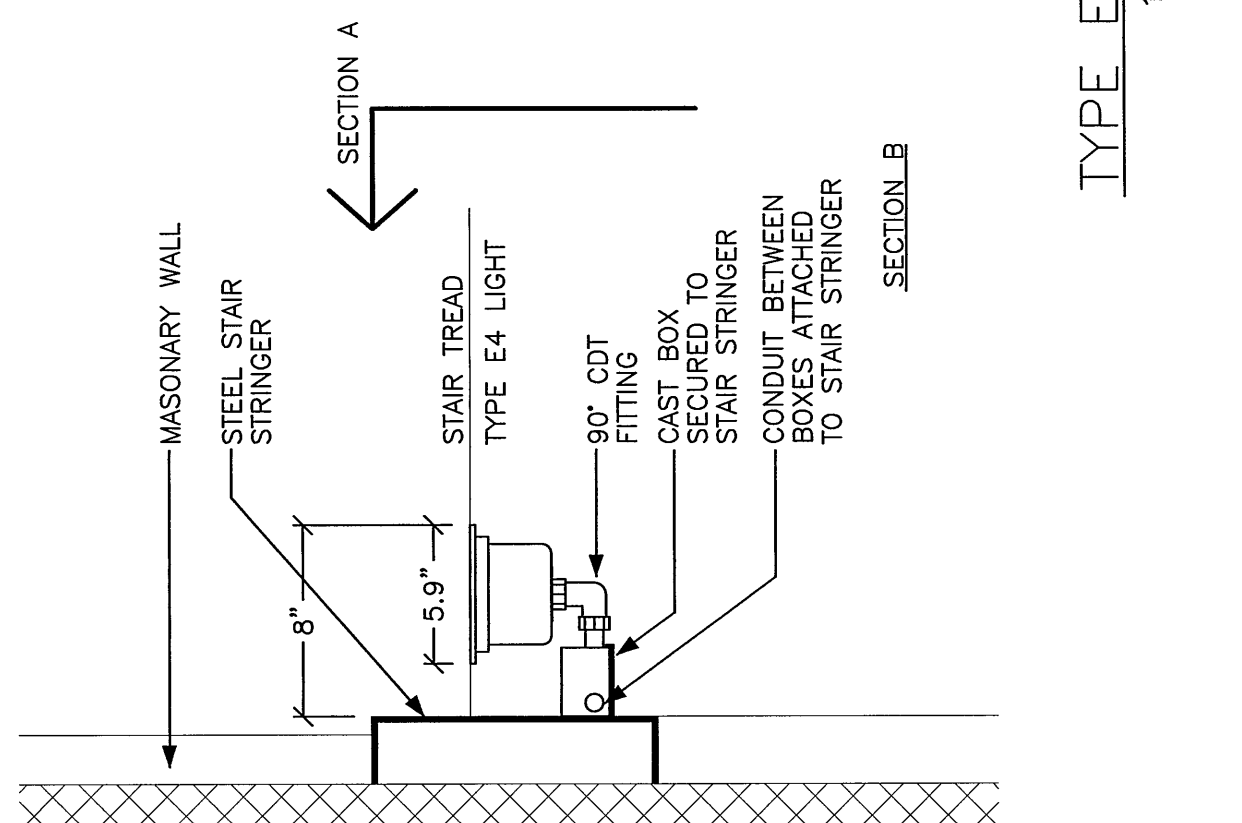
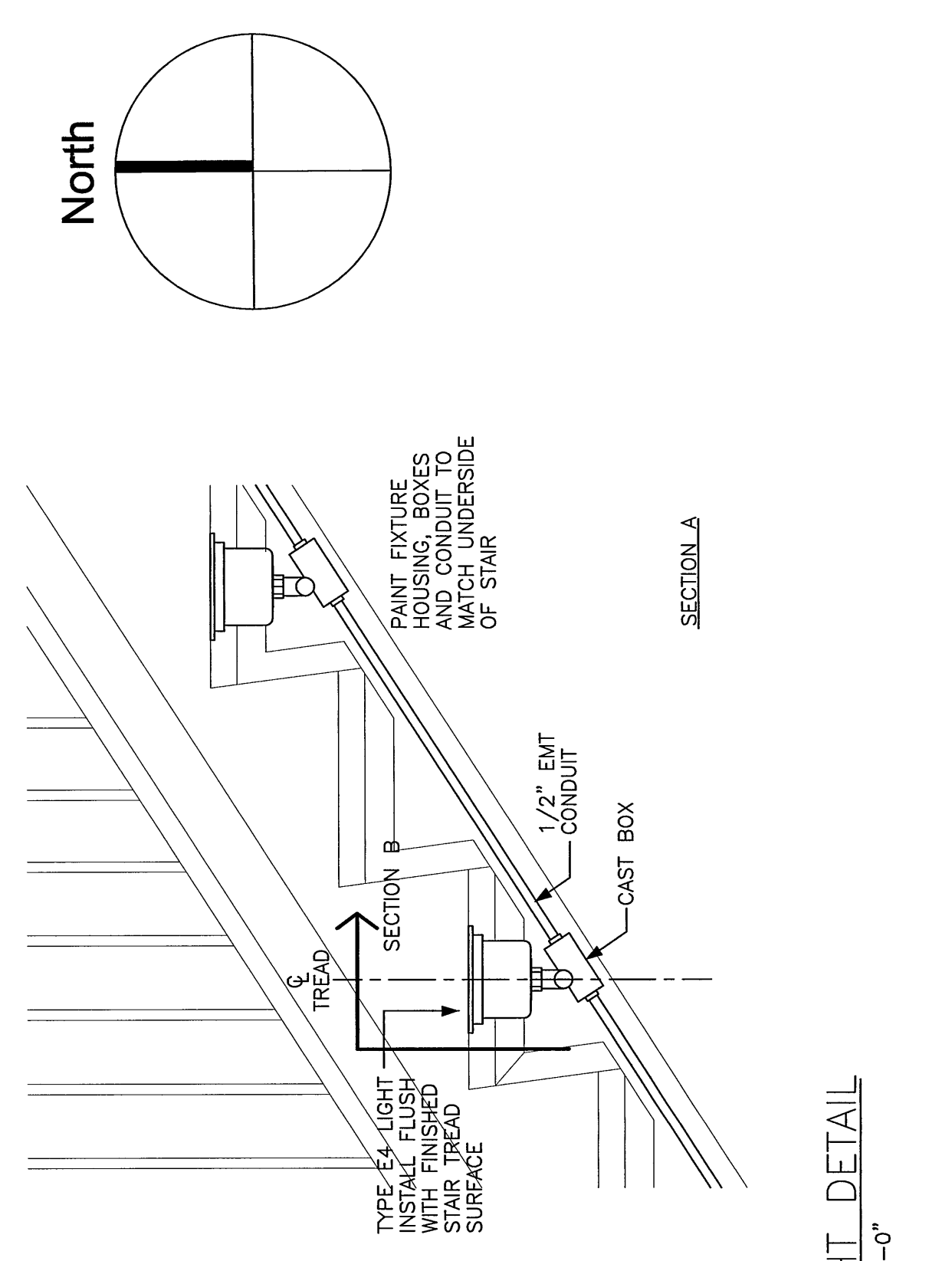


	East End Elementary School Port Deposit, Maryland	Job No.: 008 Date: June 28, 2004 Scale: 1/8" = 1'-0" Drawn by: Jc Checked by: Jc	1st Floor Lighting Plan	<h1>E3.1</h1>
	Consultants: Civil Engineer: Deluca-Hoffman Associates Landscape Architect: Carroll Associates Structural Engineer: Pritham & Greer Mechanical Engineer: Bennett Engineering Electrical Engineer: Bennett Design Lighting Designer: T.J.M. Consulting Green Consultant: Fore Solutions		11 Dutton Street Post Office Box 380 JTS Port Deposit, MD 21751-2383 Phone: 410-336-5511 Fax: 410-336-5511 Email: info@delucahoffman.com	



FIRST FLOOR NORTH LIGHTING PLAN
 1/8" = 1'-0"

EMERGENCY LIGHTING RISER DIAGRAMS
 NO SCALE

TYPE E4 LIGHT DETAIL
 1-1/2" = 1'-0"