

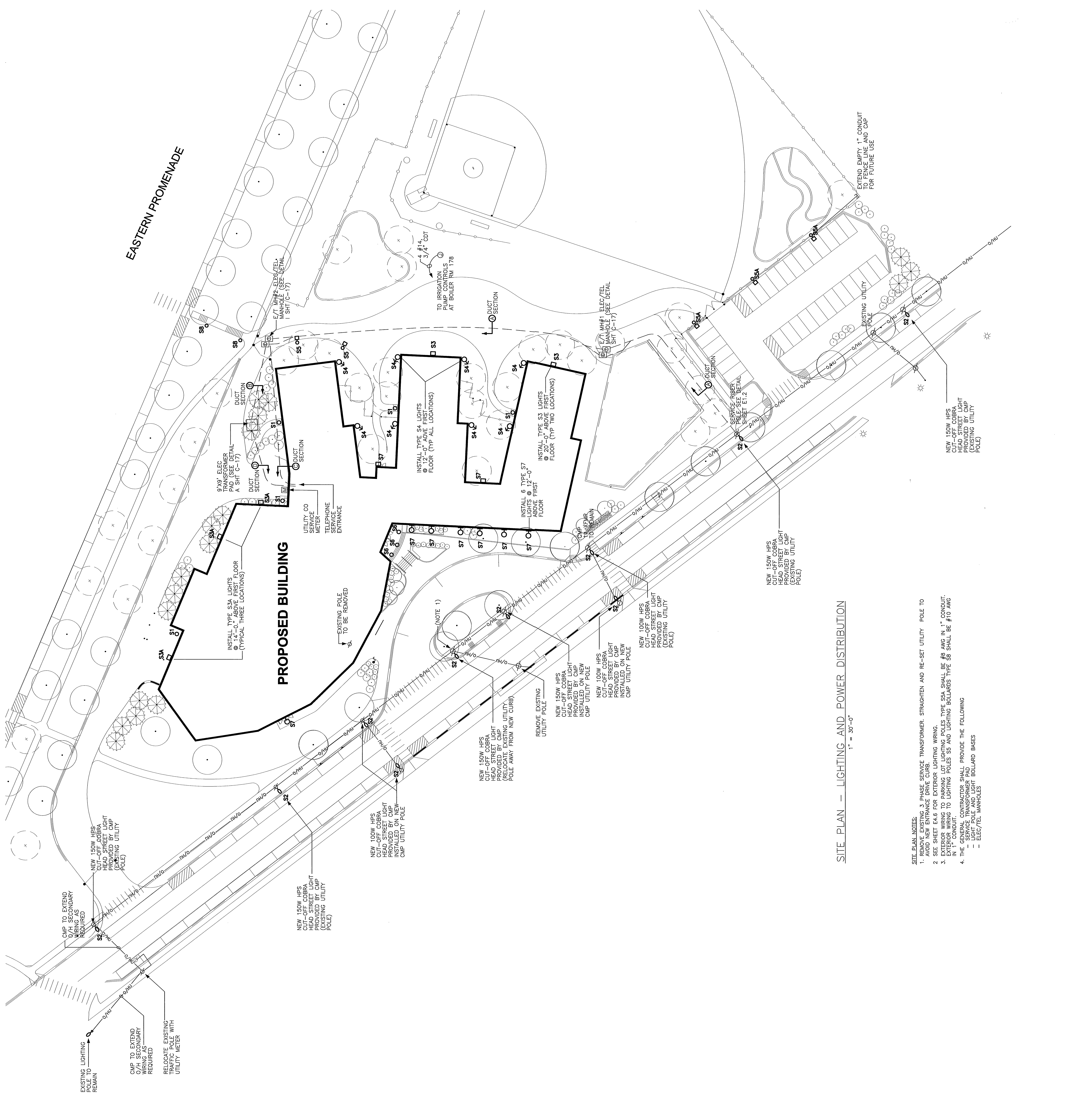
ELECTRICAL PLAN SYMBOLS

SYMBOL	DESCRIPTION
	125V, 20A, DUPLEX GROUNDED RECEPTACLE
	QUAD RECEPTACLE
	FLOOR MOUNTED QUAD RECEPTACLE
	250V, SINGLE GROUNDED RECEPTACLE
	RECESSED FLOOR BOX (Contents May Vary, See Plan for Details)
	JUNCTION BOX (See Plan for Details)
	WALL MOUNTED JUNCTION BOX (See Plan for Details)
	CONTROL PANEL (See Plan for Details)
	ELECTRICAL PANELBOARD (See Plan for Details and Mounting)
	DOOR OPERATOR PUSH BUTTON CONTROL
	DOOR HOLDER
	MOTOR STARTER
	UNFUSED DISCONNECT SWITCH No. of Poles Ampere Rating
	MANUAL MOTOR STARTER
	DOORBELL
	PUSHBUTTON
	MOTION DETECTOR M-1 = Motion Sensor M-1A = Lighting Occupancy sensor
	SECURITY SYSTEM CCTV CAMERA
	SECURITY SYSTEM CARD READER
	SECURITY SYSTEM KEYPAD
	FIRE ALARM AUDIO/VISUAL INDICATOR No. of Poles Console Rating
	FIRE ALARM PULL STATION
	FIRE ALARM HEAT DETECTOR
	FIRE ALARM SMOKE DETECTOR Indicates Duct Mounted
	FIRE ALARM WALL MOUNTED SMOKE DETECTOR
	FIRE ALARM TAMPER SWITCH
	FIRE ALARM FLOW SWITCH
	PROJECTION SPEAKER
	WALL MOUNTED SPEAKER
	CEILING MOUNTED SPEAKER
	SOUND SYSTEM SOUND SPHERE
	COMBINATION SPEAKER/CLOCK
	CLOCK
	SOUND SYSTEM MICROPHONE OUTLET (Empty Box only)
	LIGHTING/DEVICE SWITCH 3 = Three-Way Type 4 = Four-Way Type WP = Weatherproof Indicates Directional Arrows as Indicated on Plans (See Plans for Details)
	WALL MOUNTED EXIT SIGN Provide Directional Arrows as Indicated on Plans
	CEILING MOUNTED EXIT SIGN Provide Directional Arrows as Indicated on Plans
	LIGHTING DIMMER 3 = Three-Way Type 4 = Four-Way Type Indicates Directional Arrows as Indicated on Plans (See Plans for Details)
	TEMPERATURE CONTROL PANEL Provided Under Div. 15 Wired Under Div. 16
	VARIABLE FREQUENCY DRIVE Provided Under Div. 15 Wired Under Div. 16
	MOTOR OPERATED DAMPER Provided Under Div. 15 Wired Under Div. 16
	HOMERUN TO PANELBOARD Indicates No. of Wires, Excluding Ground Circuit No. Panelboard Designation

ELECTRICAL SYMBOLS NOTES:  
1. NOT ALL SYMBOLS USED ON PLANS  
2. SEE SHEET E4.2 FOR TELECOMMUNICATIONS SYSTEM PLAN SYMBOLS

ELECTRICAL SINGLE LINE SYMBOLS

SYMBOL	DESCRIPTION
	Ampere Frame Rating (3 poles except as noted otherwise)
	CIRCUIT BREAKER
	Ampere Trip Rating
	ELECTRICAL CONNECTION
	GROUND CONNECTION
	EQUIPMENT ENCLOSURE
	TRANSFORMER
	UNFUSED SWITCH No. of Poles Ampere Rating
	UTILITY CO. SERVICE METER
	Ampere Rating No. of Poles
	FUSED SWITCH Fluse Size
	VARIABLE FREQUENCY DRIVE Provided Under Division 15 Connected Under Division 16



SITE PLAN - LIGHTING AND POWER DISTRIBUTION

1" = 30'-0"

- SITE PLAN NOTES:
- REMOVE EXISTING 3-PHASE SERVICE TRANSFORMER, STRAIGHTEN AND RE-SET UTILITY POLE TO AVOID NEW ENTRANCE DRIVE CURB.
  - SEE SHEET E4.6 FOR EXTERIOR LIGHTING WIRING.
  - EXTERIOR WIRING TO PARKING LOT LIGHTING POLES TYPE S5A SHALL BE #6 AWG IN 1" CONDUIT. WIRING TO LIGHTING POLES S5 AND LIGHTING SOLLARS TYPE S5 SHALL BE #10 AWG IN 1" CONDUIT.
  - THE GENERAL CONTRACTOR SHALL PROVIDE THE FOLLOWING:
    - LIGHT POLES AND LIGHT BOLLARD BASES
    - ELEC/TEL MANHOLES

<p><b>East End Elementary School</b> Portland Public Schools Portland, Maine</p>	<p>No. 1008 Date: 03/28/2004 Scale: 1" = 30'-0" Drawn by: JG Checked by: JG</p>	<p><b>E1.1</b> Site Plan</p>
	<p>Lawrence Bartlett Architects Portland, ME</p>	
<p>Consultants Civil Engineer Landscape Architect Carol Associates Structural Engineer Prinham &amp; Greer Mechanical Engineer Bennet Engineering Electrical Engineer Berfield Design Urban Design TJ Consulting Civil Engineering Fore Solutions</p>	<p>10 Duane Street Post Office Box 583 DTS Portland, ME 04112-2883 Voice: 207-781-1111 Fax: 207-781-5105 Email: info@carolassoc.com</p>	<p>10 Duane Street Post Office Box 583 DTS Portland, ME 04112-2883 Voice: 207-781-1111 Fax: 207-781-5105 Email: info@carolassoc.com</p>