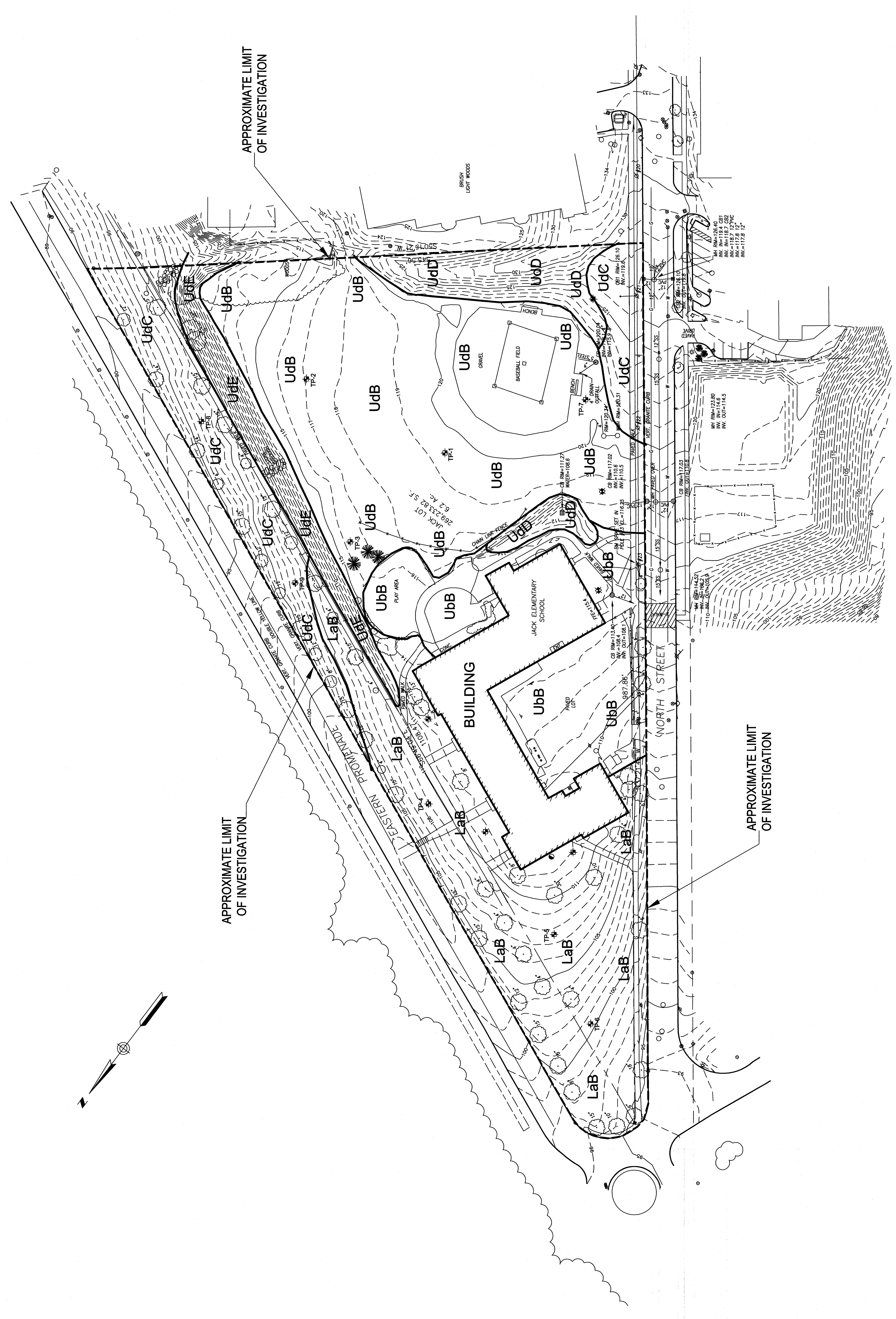


N.T.S.
LOCATION MAP

- LEGEND:**
- WATER GATE
 - MANHOLE
 - CATCH BASIN
 - DECIDUOUS TREE
 - CONIFEROUS TREE
 - FENCE
 - GAS LINE
 - WATER MAIN
 - SWIRLY SEWER
 - STORM DRAIN
 - 1" CONTOUR



LEGEND
Approximate Test Pit Location

NOTES:

- 1.) Base plan provided by DeLuca - Hoffman Associates.
- 2.) This plan meets Maine Association of Professional Engineers (MAPE) standards for a Class B soil survey. According to MAPE standards, a Class B soil survey may contain 1 acre or less of dissimilar limiting indications per delineation, and its accompanying plan must have a scale of 1 inch equal to 250 feet or larger.
- 3.) The Soil Survey plan is incomplete without the accompanying soil test pit logs and soil test pit photos cover. Detailed descriptions of test pit logs are provided in the Soil Survey Report.

S.W. COLE
INCORPORATED
DELUCA-HOFFMAN ASSOCIATES, INC.
CLASS B - HIGH INTENSITY
SOIL SURVEY MAP
Portland, Maine

U.S. No. 68-2752-D
Date: 12/7/03

Scale: 1" = 50'
Sheet: 1

| | |
|--|---|
| | <p>East End Elementary School Portland Public Schools Portland, Maine</p> |
| | <p>Consultants: DeLuca-Hoffman Associates Candace A. DeLuca Philip M. & Greg Hoffman Professional Engineer Balanced Engineering Barfield Design Marsh Design Gene Conant FOR SUBMITTERS</p> |
| <p>3-D Business Street Portland, Maine 04103 Tel: 207.775.1212 Fax: 207.775.1213 e: d@deluca.com</p> | <p>Job No.: 0308 Date: January 14, 2004 Drawing Title: Class B High Intensity Soil Survey</p> |

C-32

DH
DELUCA-HOFFMAN ASSOCIATES, INC.
779 MAIN STREET, SUITE B
PORTLAND, ME 04103
207.775.1212