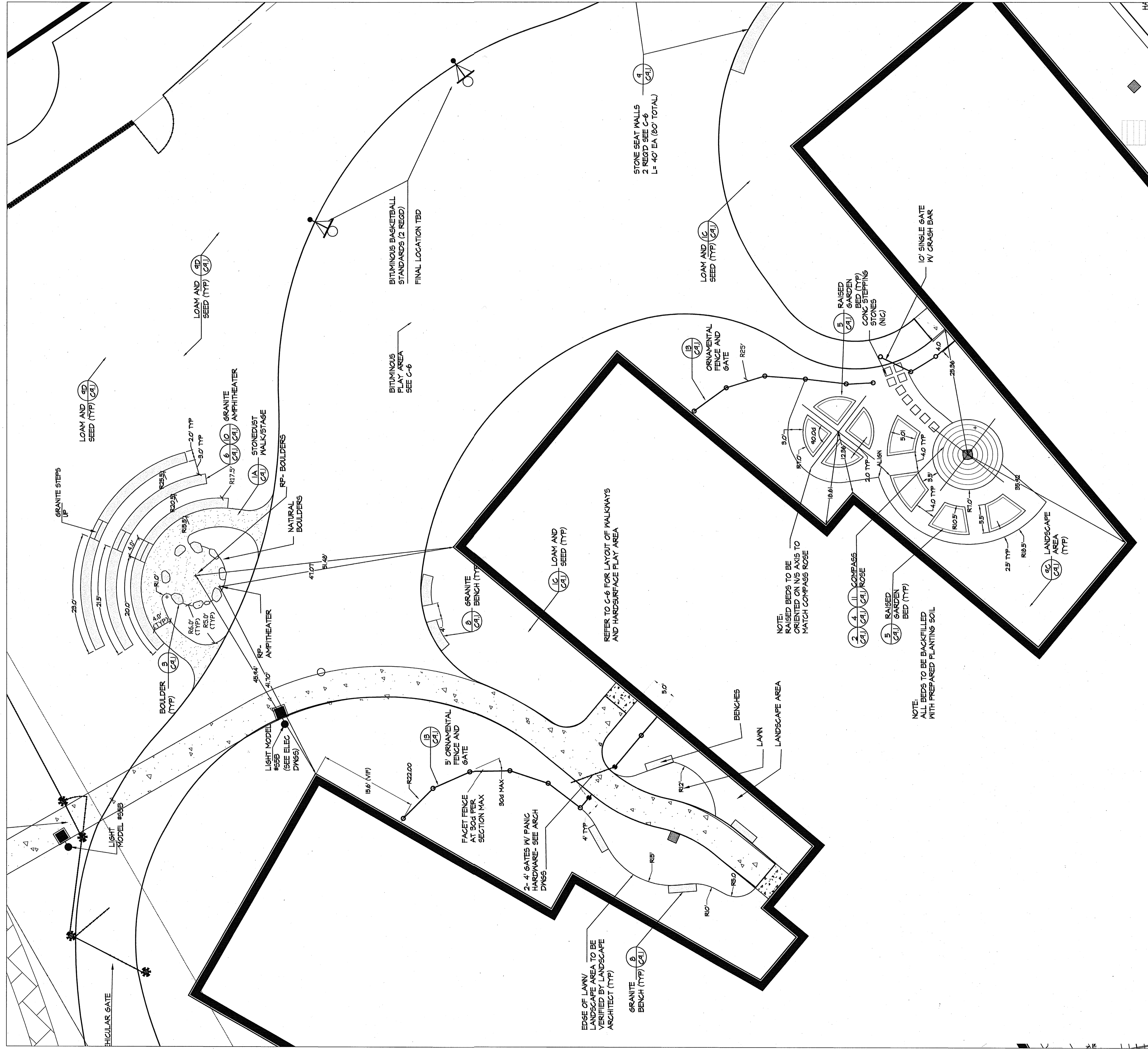
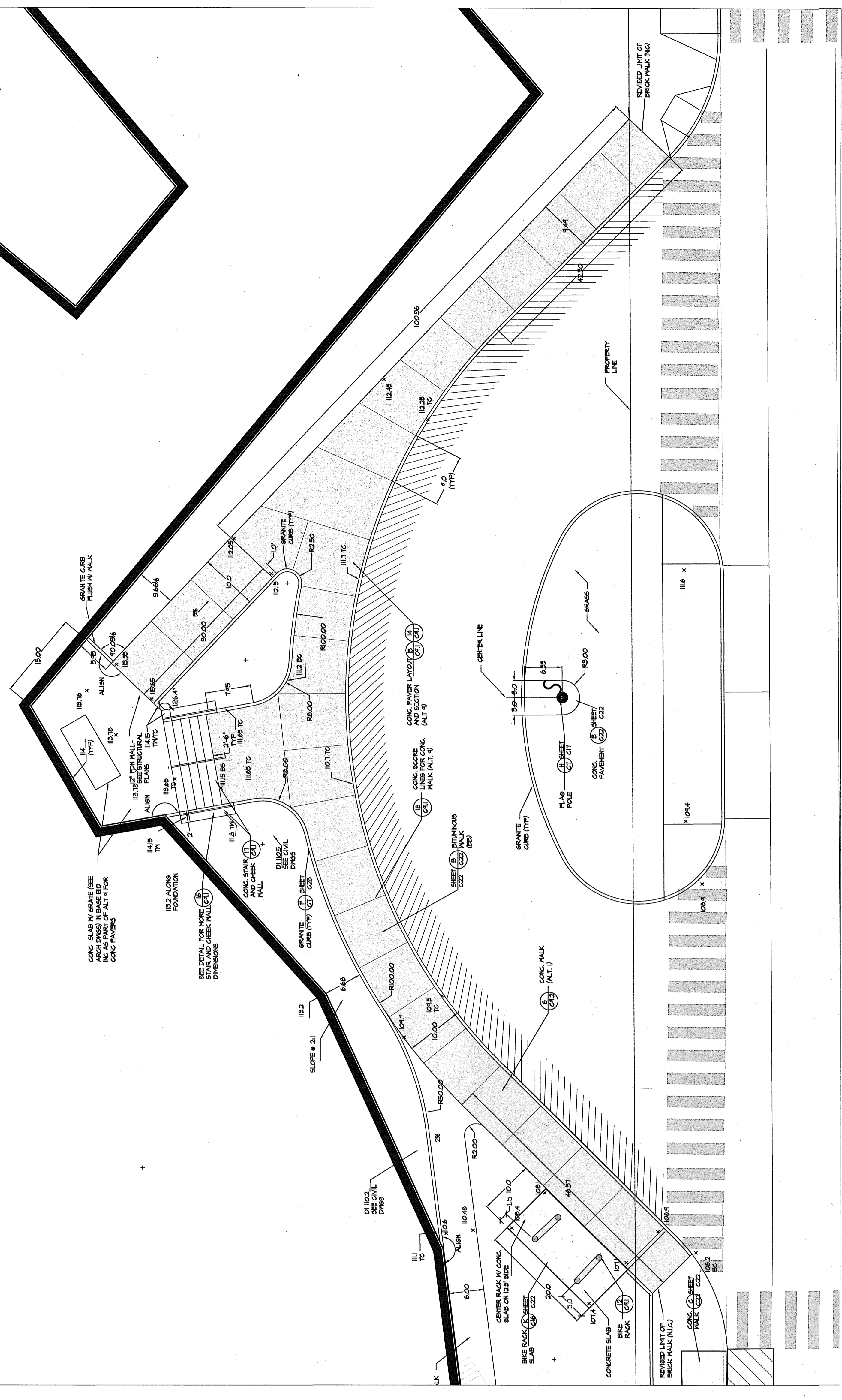


**SITE IMPROVEMENT NOTES:**

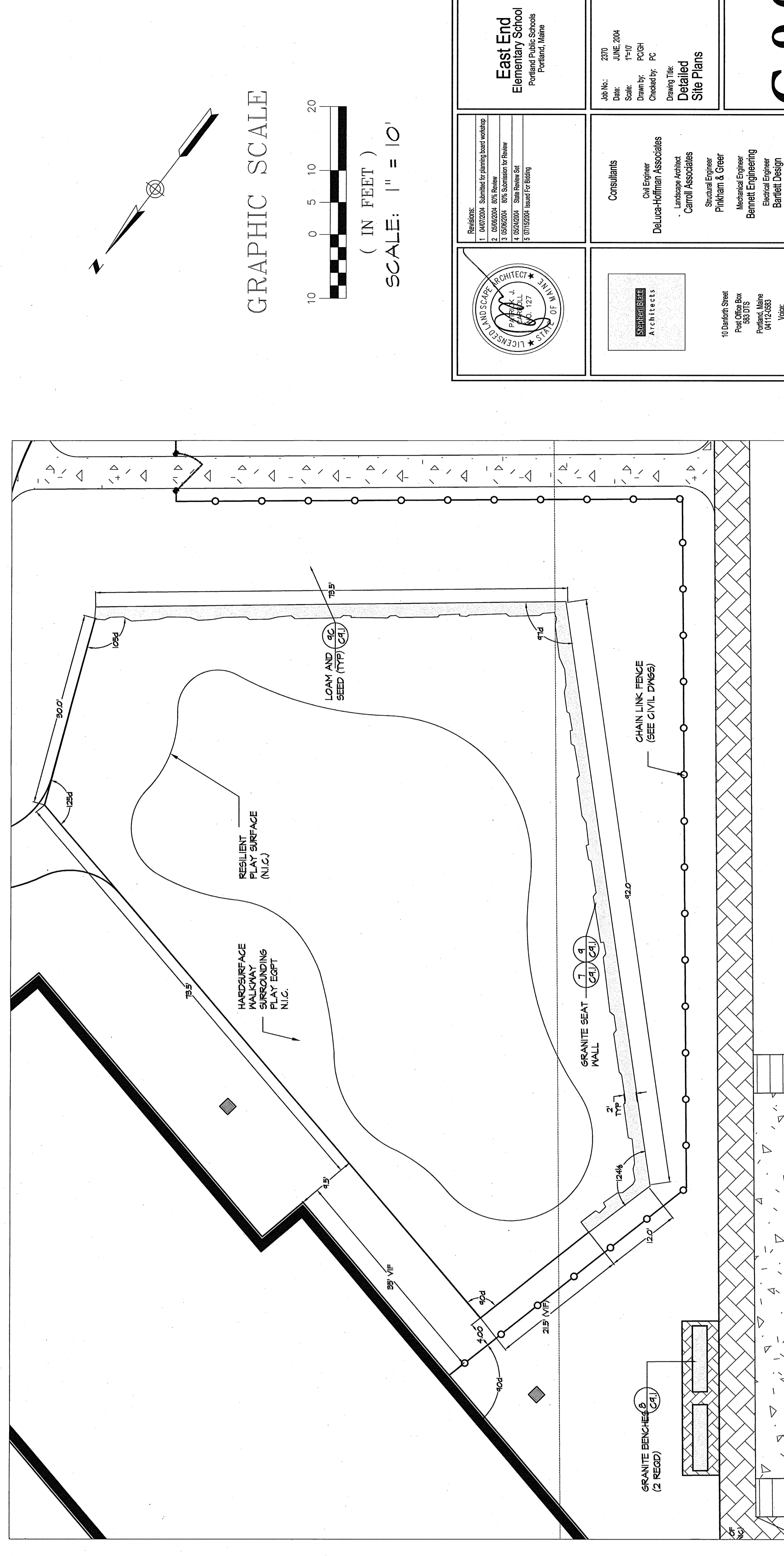
1. ALL GRANITE INDICATE ON PLANS FOR USE AS BENCHES, SEAT WALLS, RETAINING WALLS, BOLLERS, AND CRESTLESTONE PAVING IS TO BE SUPPLIED BY THE CITY OF PORTLAND AND WILL BE TAGGED FOR SPECIFIC USE AREA BY THE LANDSCAPE ARCHITECT PRIOR TO PLACEMENT. STOCKPILED STONE WILL BE DELIVERED TO SITE BY THE CITY OF PORTLAND AND STOCKPILED IN A LOCATION TIED IN COORDINATION WITH THE CONTRACTOR AND THE OWNER.
2. FINAL LOCATION OF BENCHES, BOLLERS, AND OTHER SITE IMPROVEMENTS WILL BE MADE BY THE LANDSCAPE ARCHITECT PRIOR TO INSTALLATION.
3. SOFT PLAY AREAS, INCLUDING SURFACING MATERIAL, SHALL BE INSTALLED BY OTHERS UNDER A SEPARATE CONTRACT WITH THE CITY OF PORTLAND UPON COMPLETION OF THE ASSOCIATED SITEWORK.



**PLAN OF COURTYARDS, AMPHITHEATRE, AND HARD PLAY AREA**



**ENTRANCE LAYOUT AND GRADING**



**SOFT PLAY AREA**

	<b>East End Elementary School</b> Portland Public Schools 11000 NE 28th Ave Portland, OR 97218 503.944.3333 503.944.3333	NO. 200 DATE: JUNE 2004 DRAWN: TYP CHECKED: PCP COUNTY: PC PROJECT: District of Portland EAST END SITE PLANS	<b>C-9.0</b>
	CONSULTANTS: Civil Engineer Landscape Architect Structural Engineer Mechanical Engineer Electrical Engineer Fire Protection Engineer T.M. Consulting Geo-Consultant Fire Solutions	CONSULTANTS: Duluth-Hoffman Associates Landmark Architects Central Associates Structural Engineer Plinkham & Greer Mechanical Engineer Bennett Engineering Electrical Engineer T.M. Consulting Geo-Consultant Fire Solutions	PROJECTS: 1. EAST END ELEMENTARY SCHOOL 2. EAST END ELEMENTARY SCHOOL 3. EAST END ELEMENTARY SCHOOL 4. EAST END ELEMENTARY SCHOOL 5. EAST END ELEMENTARY SCHOOL

