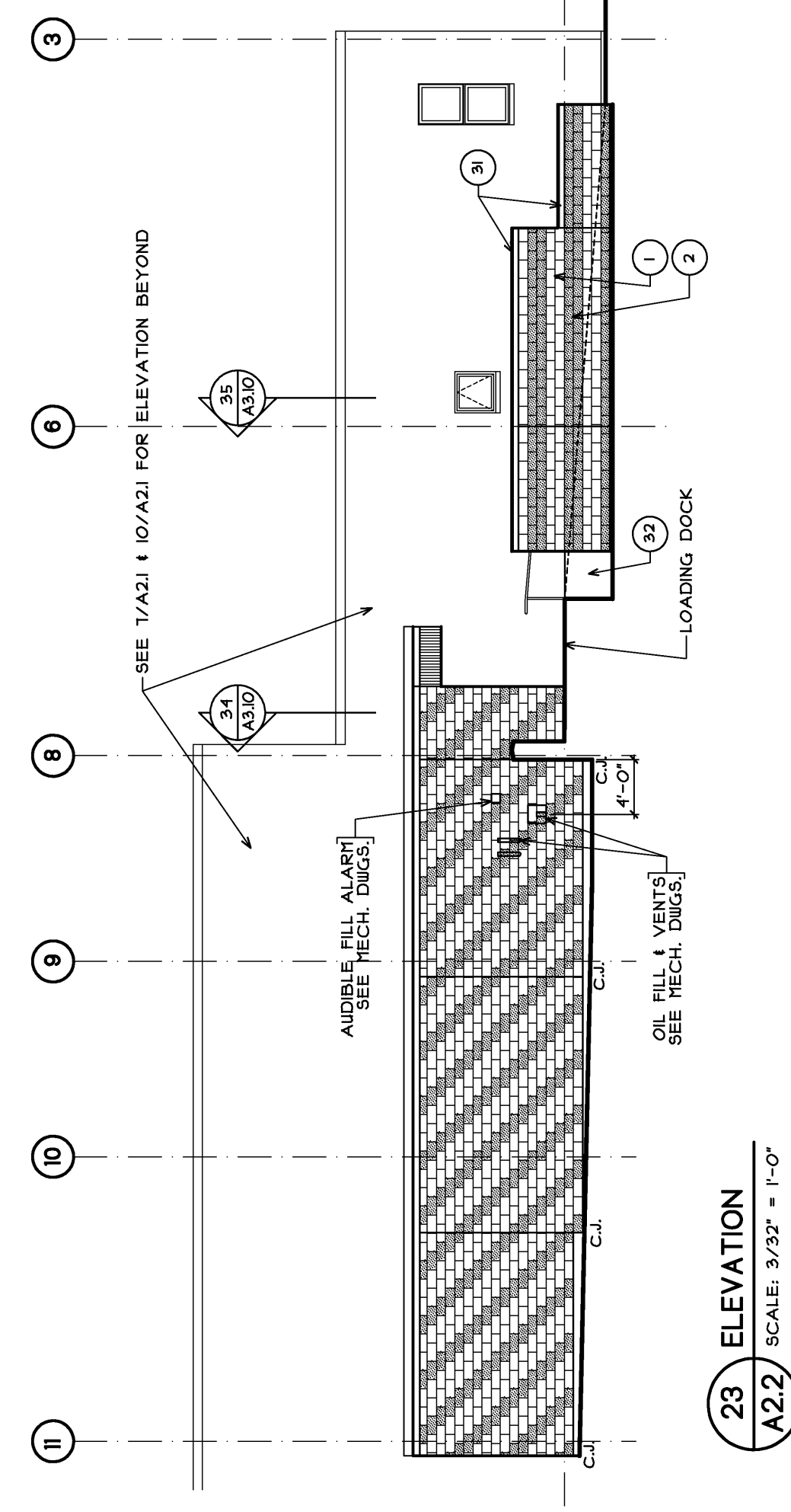
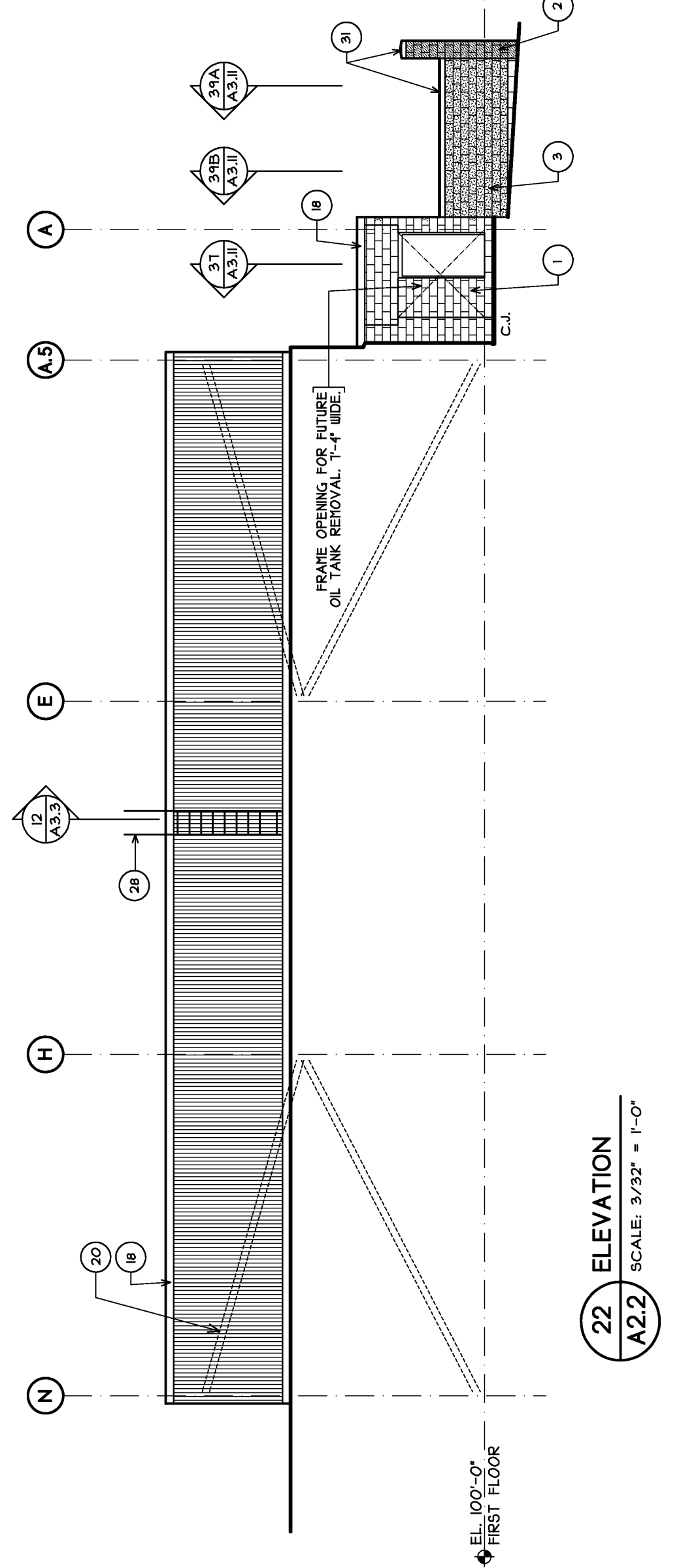


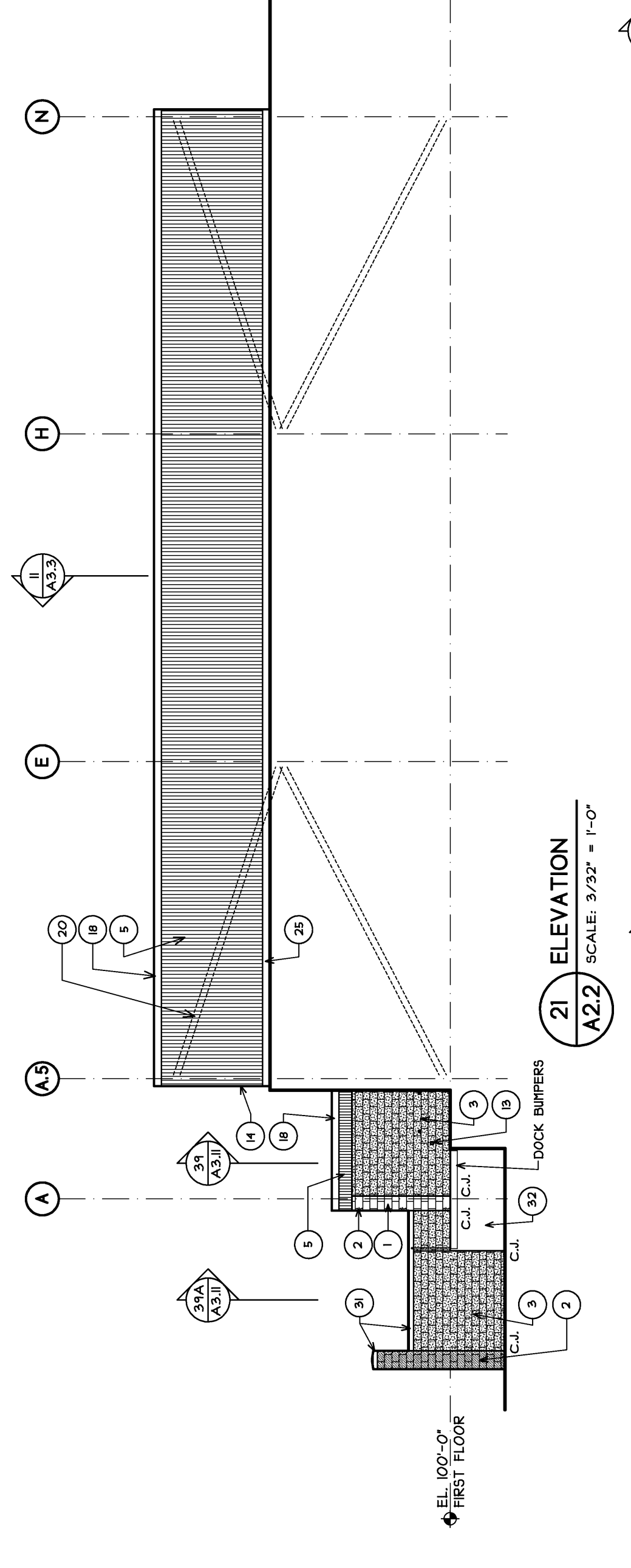
24 ELEVATION
A2.2 SCALE: 3/32" = 1'-0"



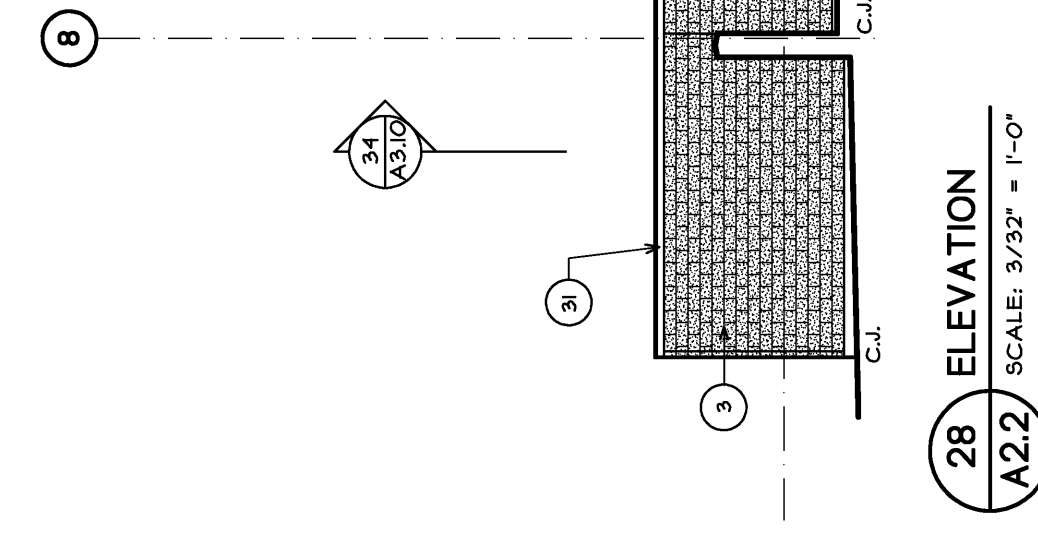
23 ELEVATION
A2.2 SCALE: 3/32" = 1'-0"



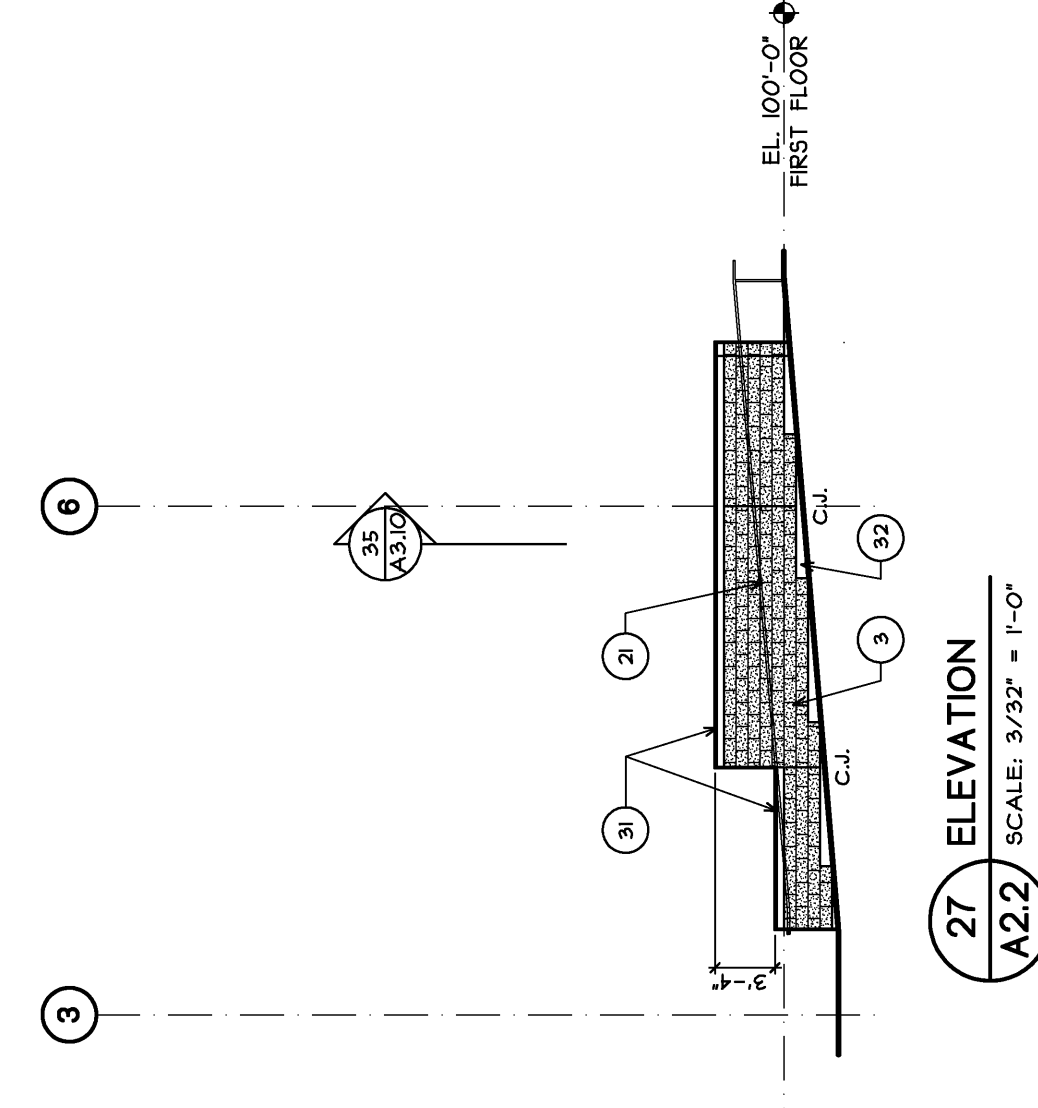
22 ELEVATION
A2.2 SCALE: 3/32" = 1'-0"



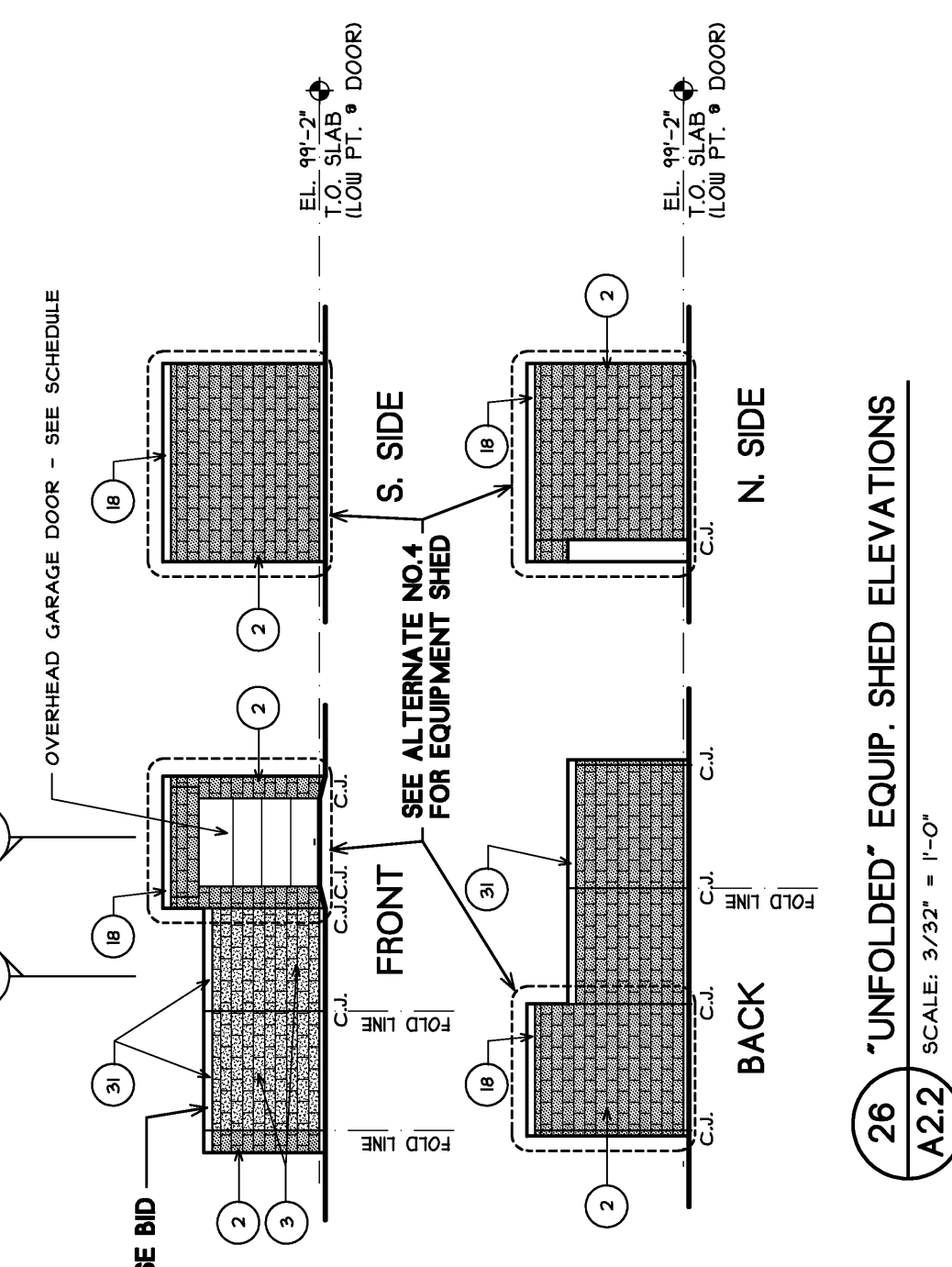
21 ELEVATION
A2.2 SCALE: 3/32" = 1'-0"



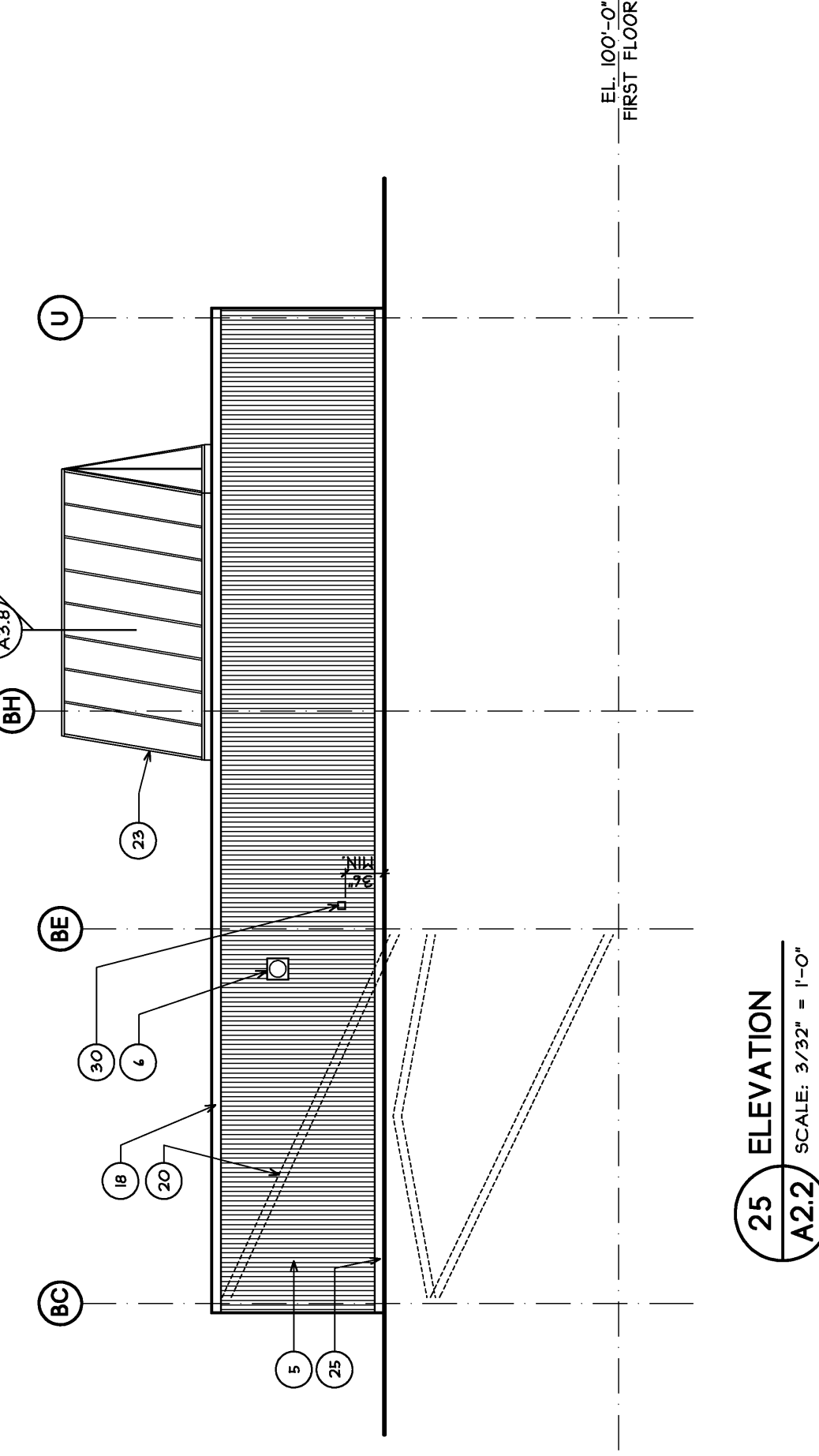
28 ELEVATION
A2.2 SCALE: 3/32" = 1'-0"



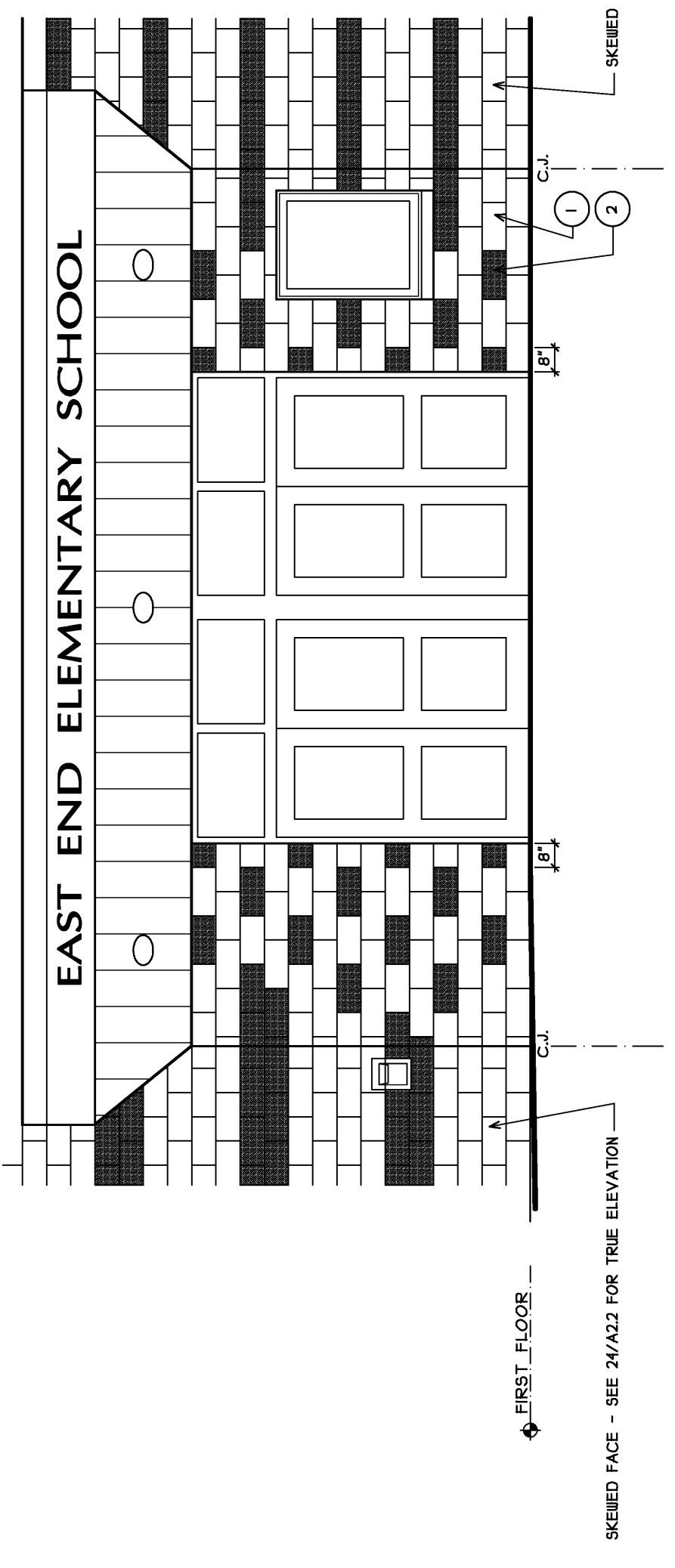
27 ELEVATION
A2.2 SCALE: 3/32" = 1'-0"



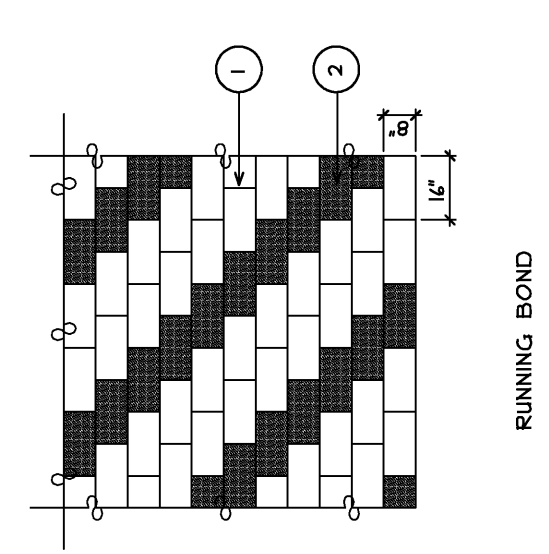
26 'UNFOLDED' EQUIP. SHED ELEVATIONS
A2.2 SCALE: 3/32" = 1'-0"



25 ELEVATION
A2.2 SCALE: 3/32" = 1'-0"



A MASONRY PATTERN DETAIL @ ENTRANCE
A2.2 SCALE: 1/4" = 1'-0"



B MASONRY PATTERN DETAIL
A2.2 SCALE: 1/4" = 1'-0"

<p>East End Elementary School Portland Public Schools Portland, Maine</p>	<p>NO: 1005 Date: 04/14/2004 Scale: 3/32" = 1'-0" Drawn by: jsh Checked by: jsh</p>	<p>Building Elevations</p>	<p>A2.2</p>
	<p>Consultants Civil Engineer: Daluca-Hoffman Associates Landscape Architect: Carroll Associates Structural Engineer: Prinkham & Greer Mechanical Engineer: Bennett Engineering Electrical Engineer: Bartlett Design Interior Design: Kono Design Title Consulting: T&H Consulting Construction Management: Core Solutions</p>		
<p>STEPHEN J. BLATT ARCHITECTS</p>	<p>10 DeLoria Street Portland, ME 04103 Phone: 207.625.9111 Fax: 207.625.2105 Email: sblatt@stephenjblatt.com</p>		