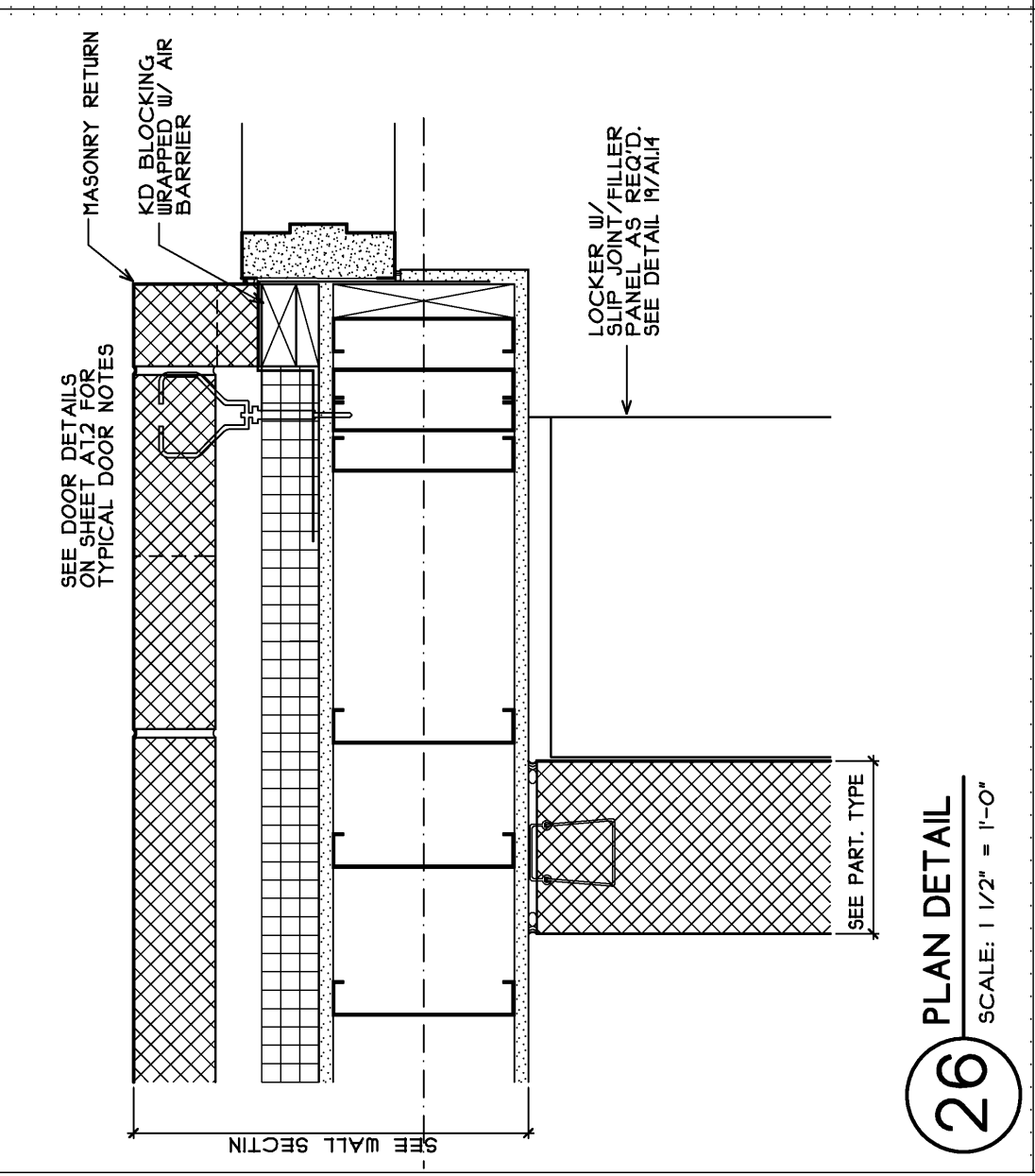
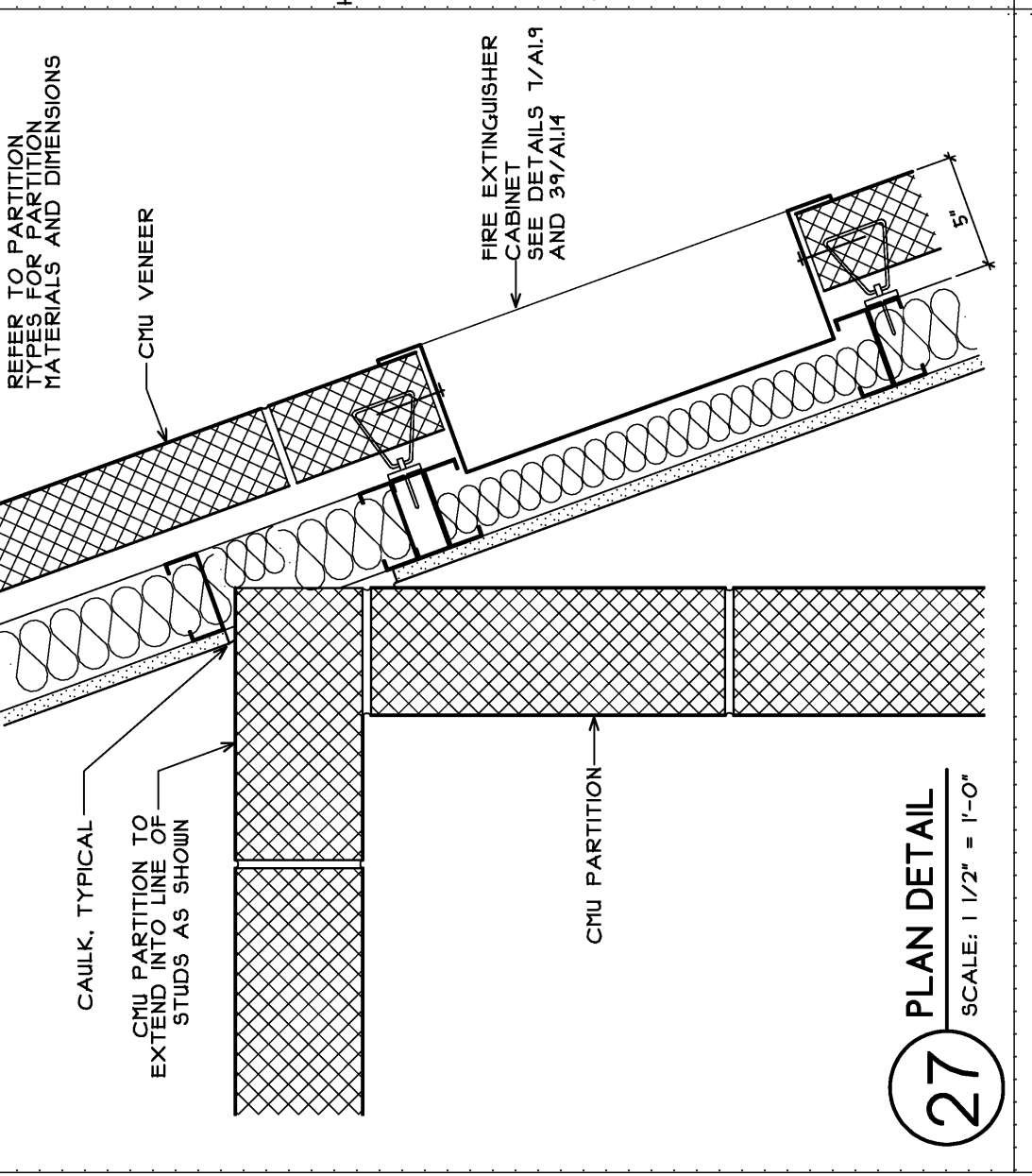


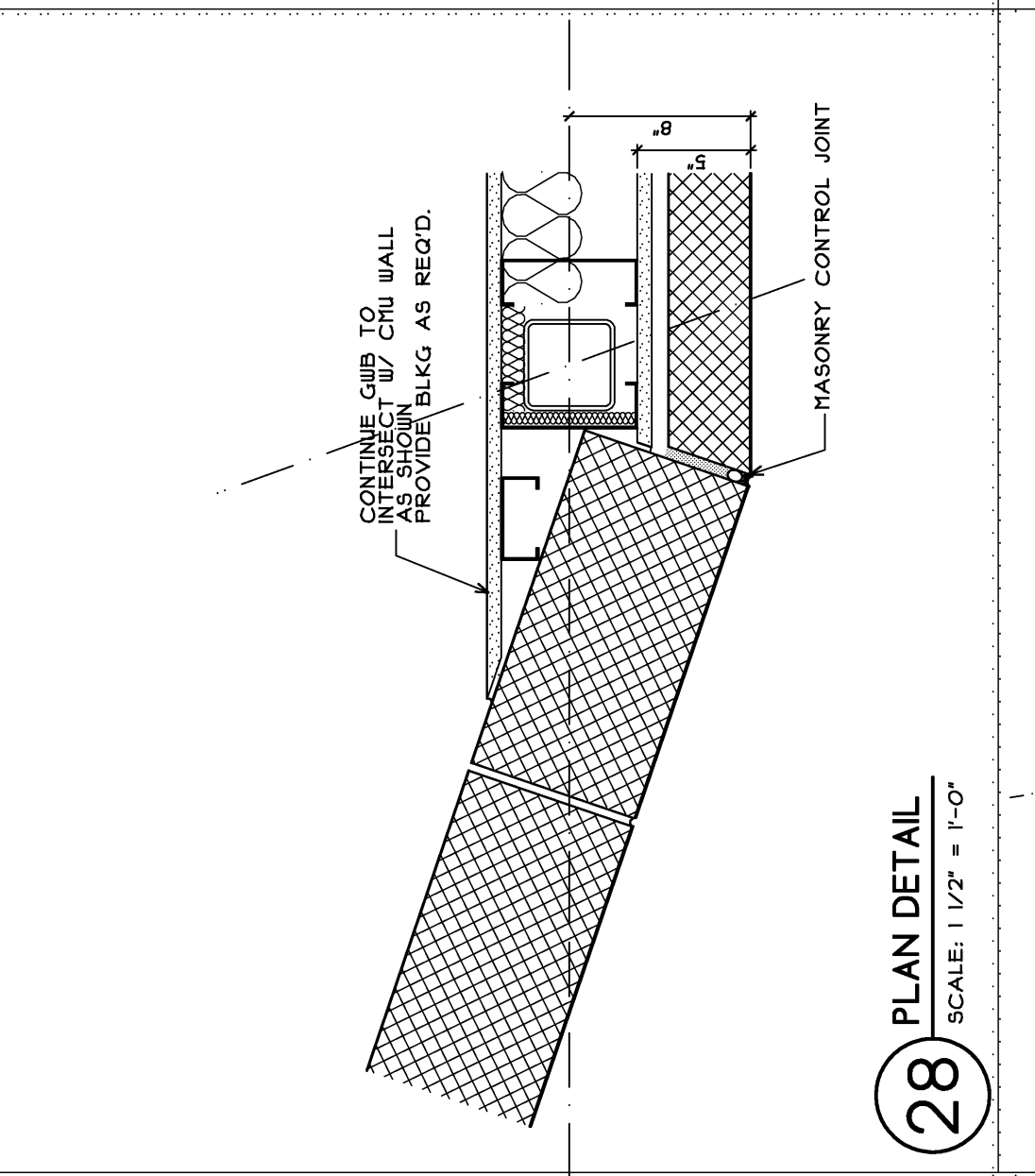
25 PLAN DETAIL
SCALE: 1/2" = 1'-0"



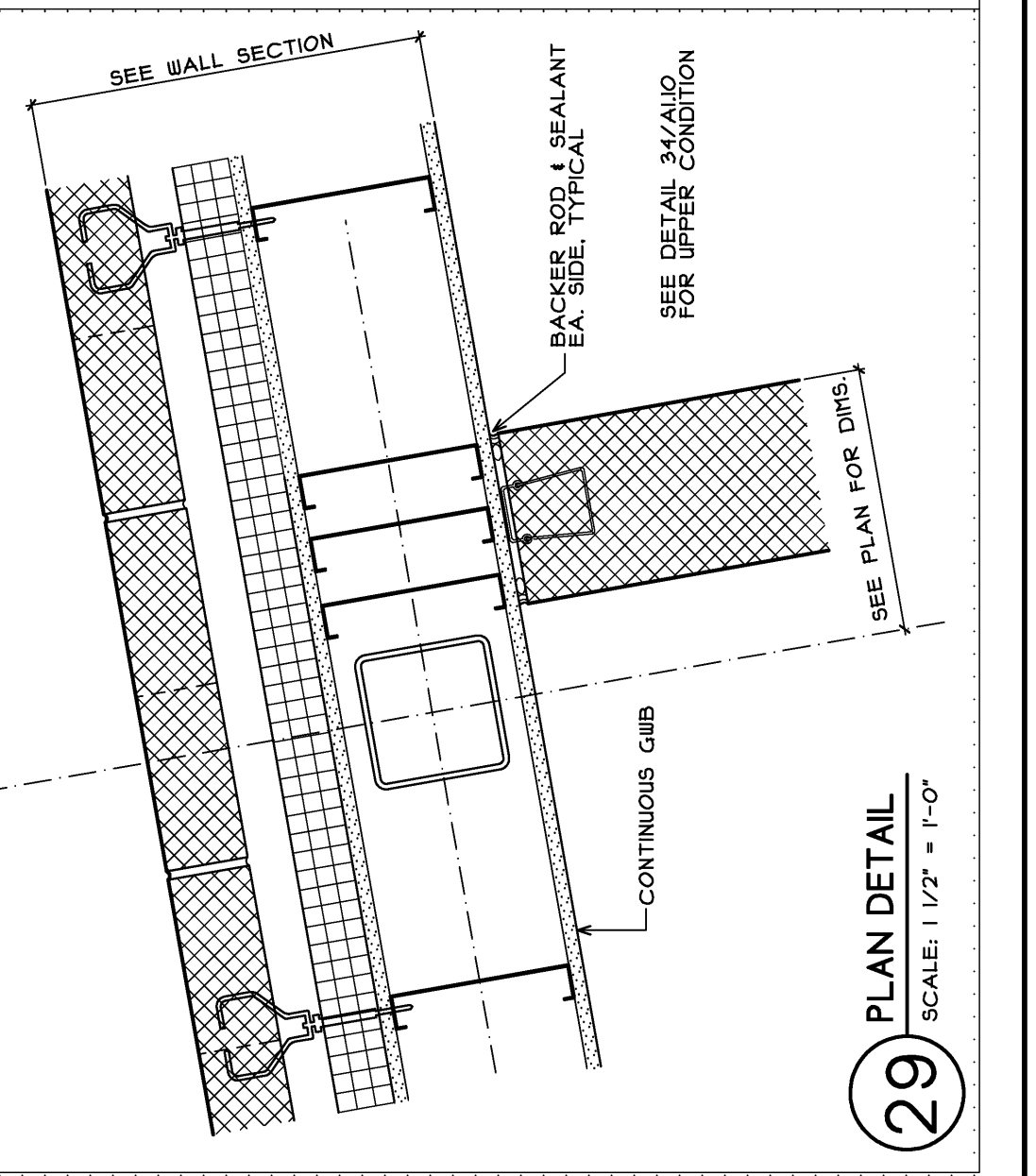
26 PLAN DETAIL
SCALE: 1/2" = 1'-0"



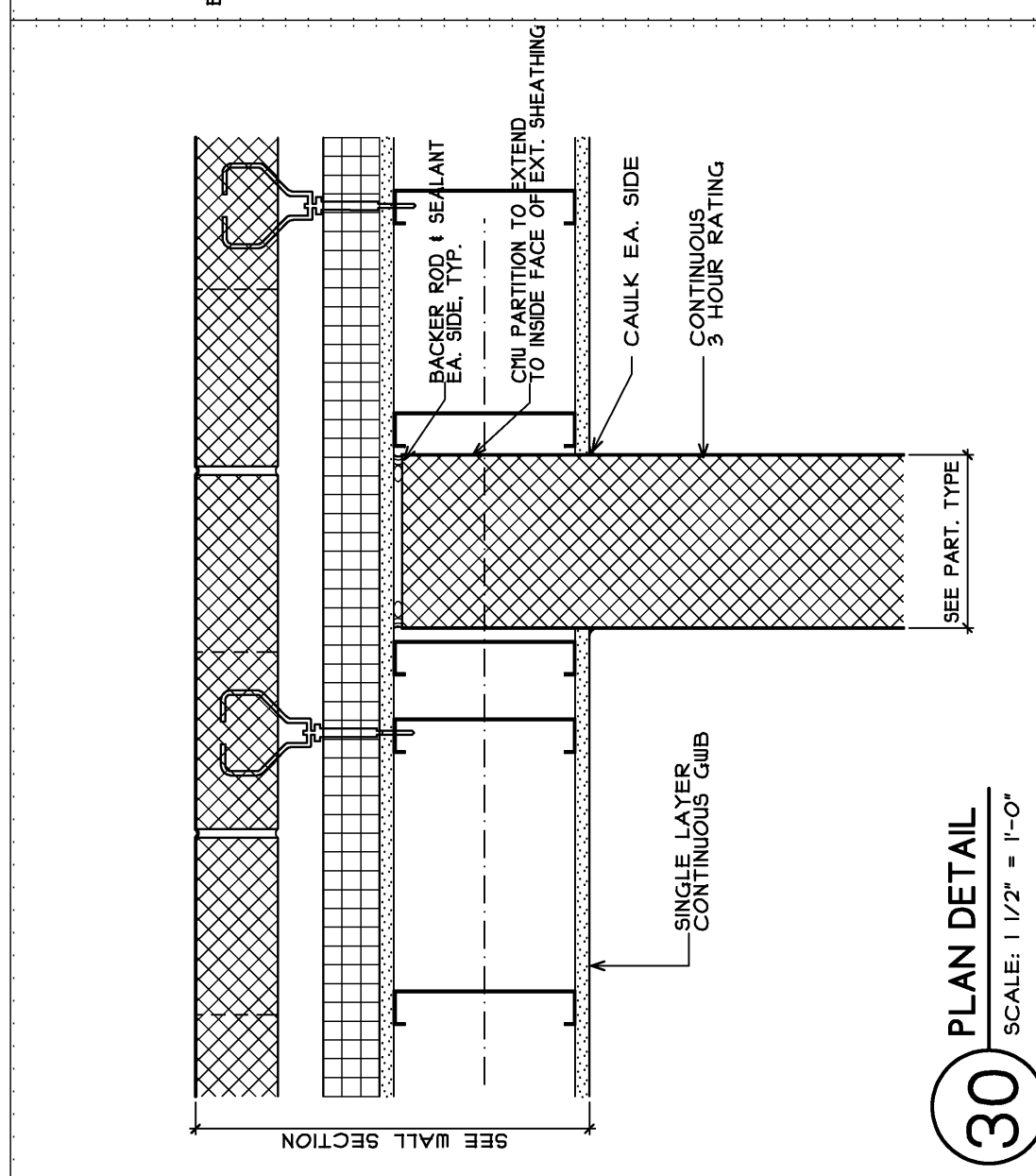
27 PLAN DETAIL
SCALE: 1/2" = 1'-0"



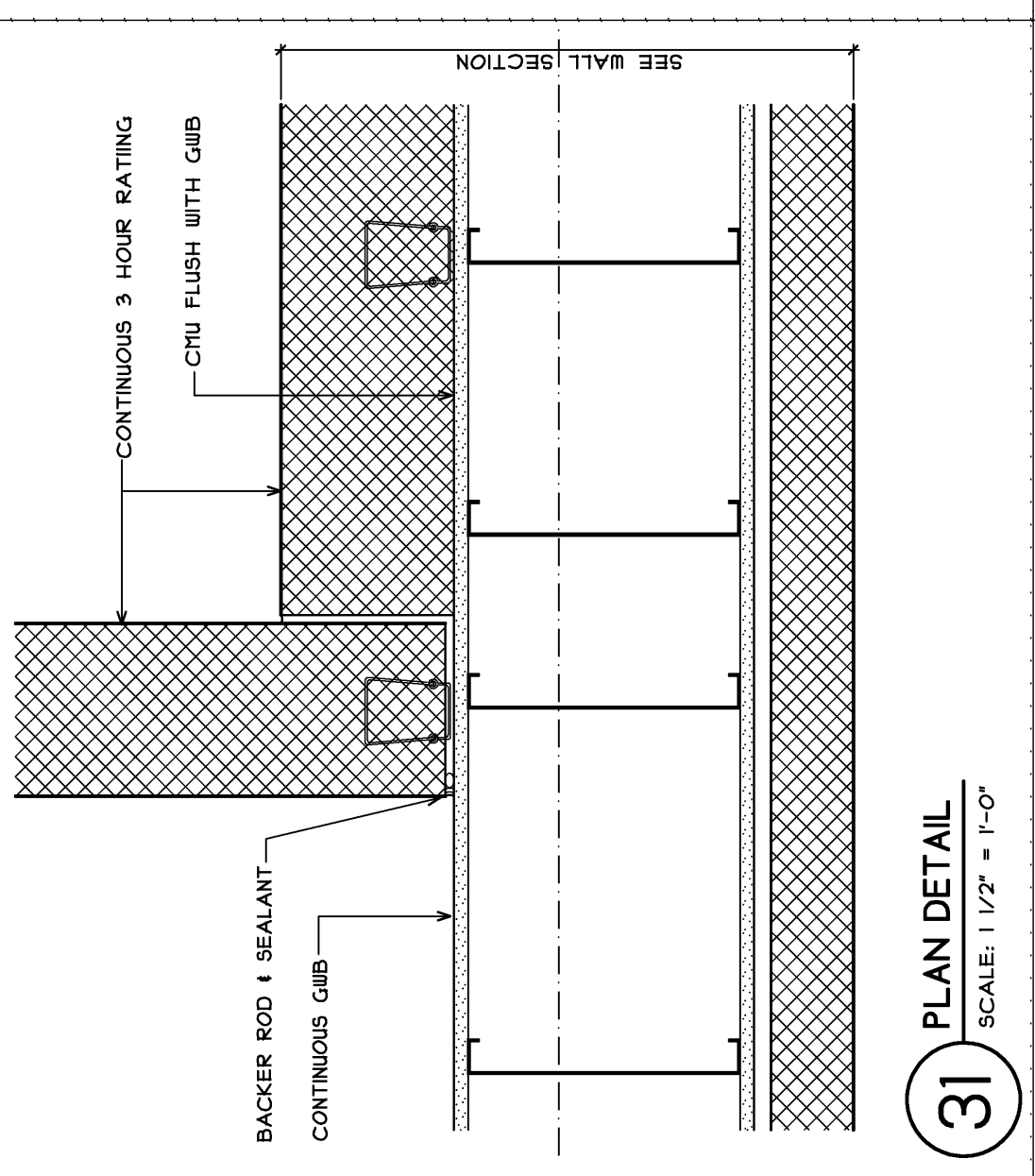
28 PLAN DETAIL
SCALE: 1/2" = 1'-0"



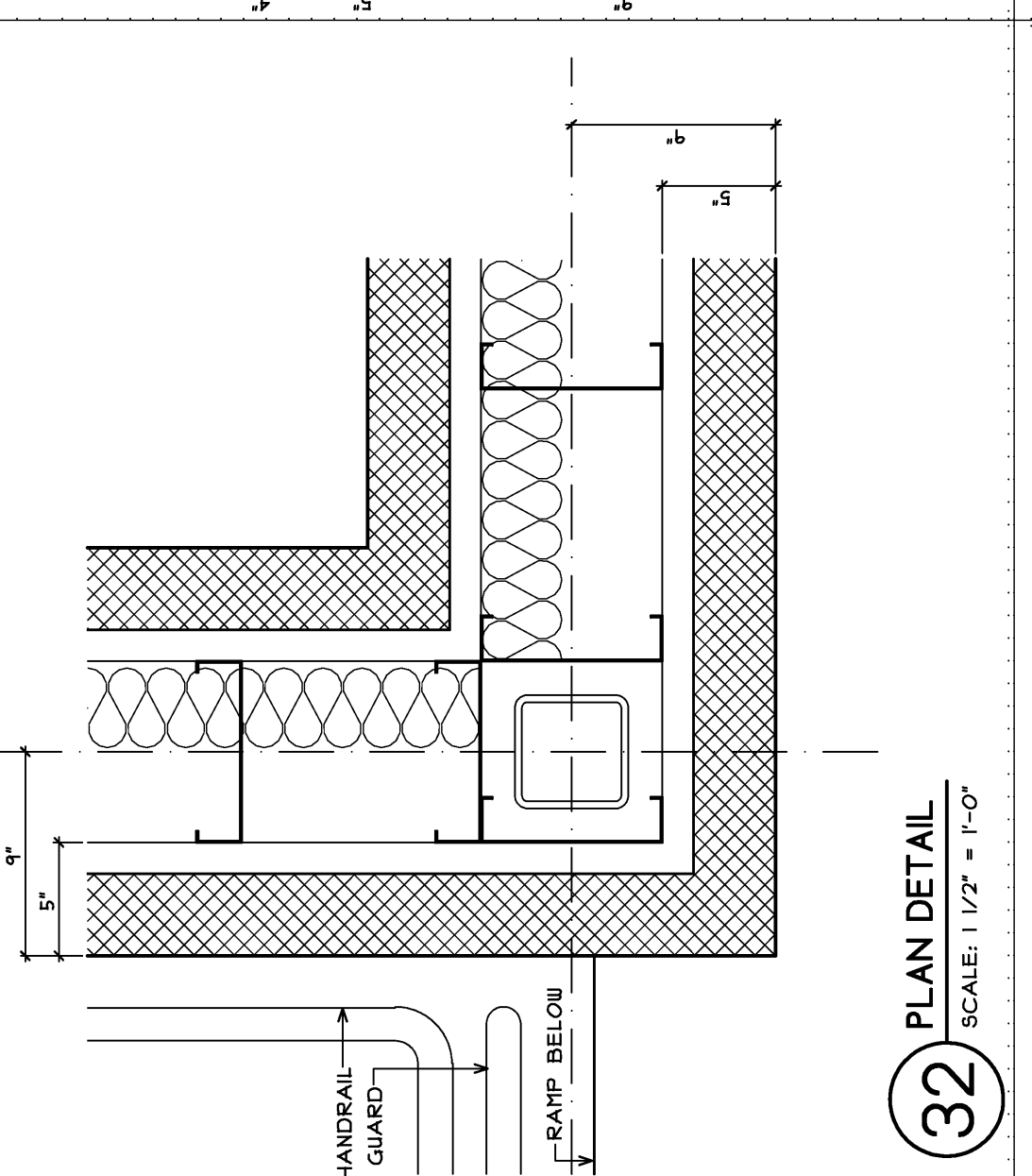
29 PLAN DETAIL
SCALE: 1/2" = 1'-0"



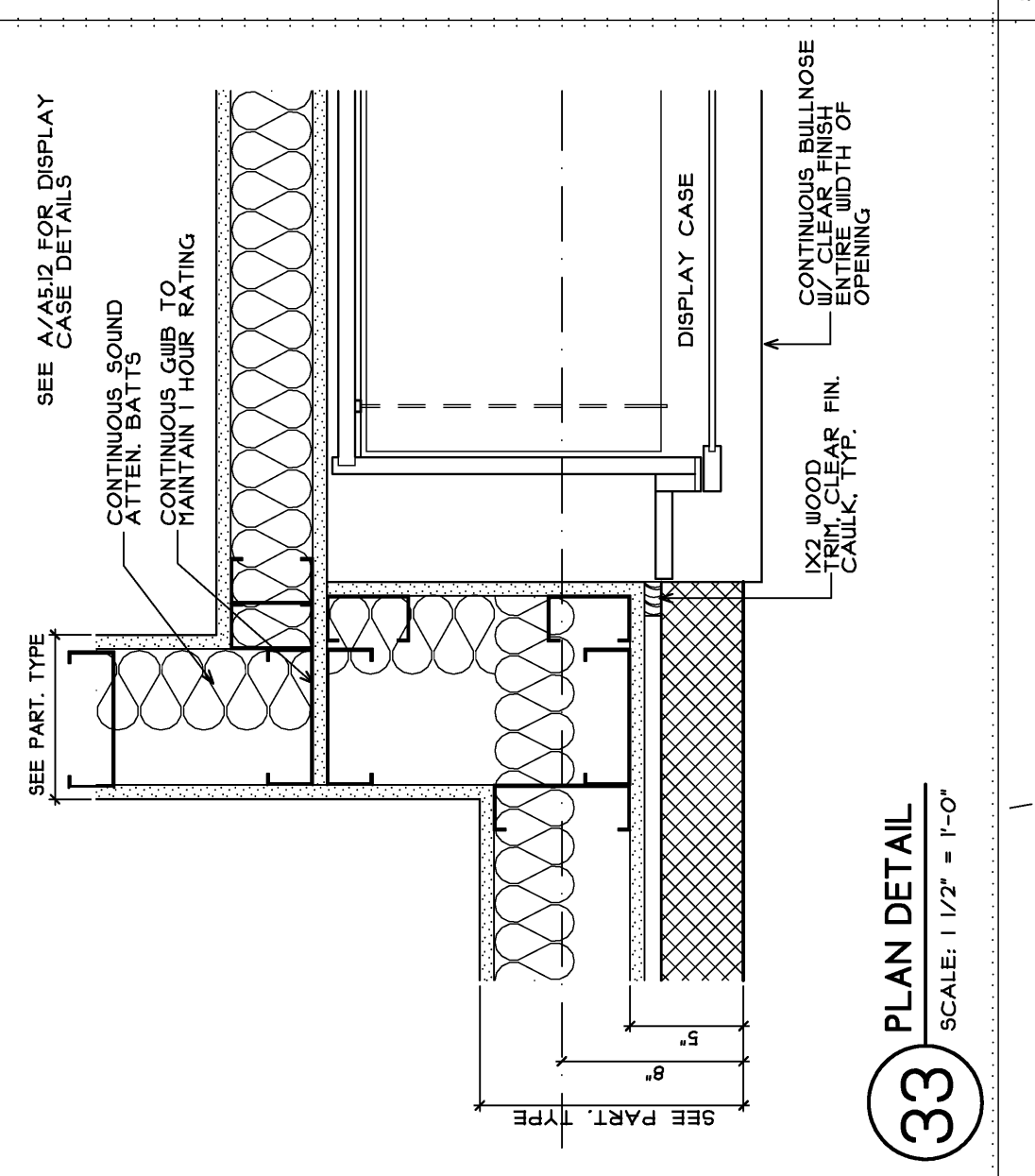
30 PLAN DETAIL
SCALE: 1/2" = 1'-0"



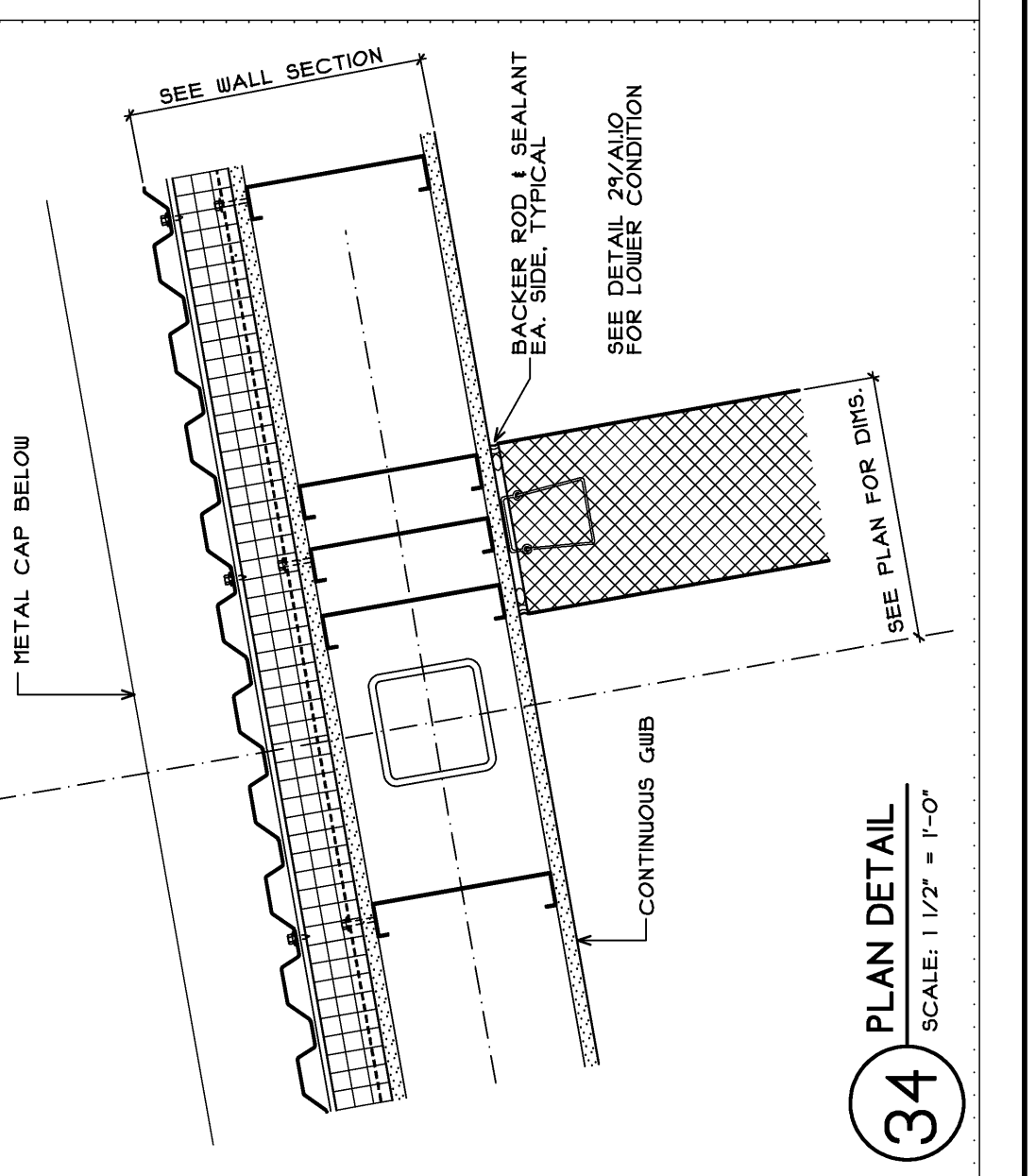
31 PLAN DETAIL
SCALE: 1/2" = 1'-0"



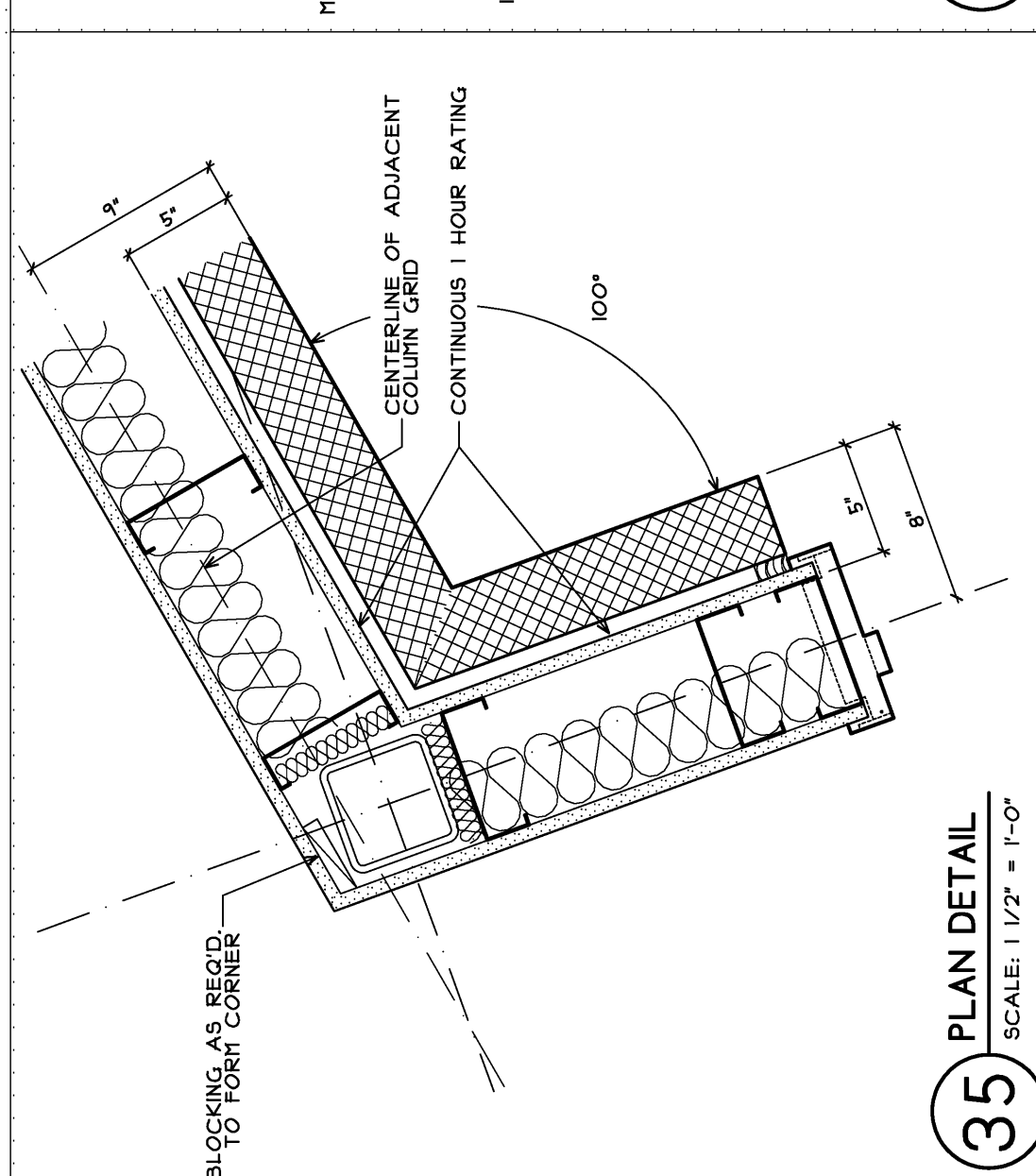
32 PLAN DETAIL
SCALE: 1/2" = 1'-0"



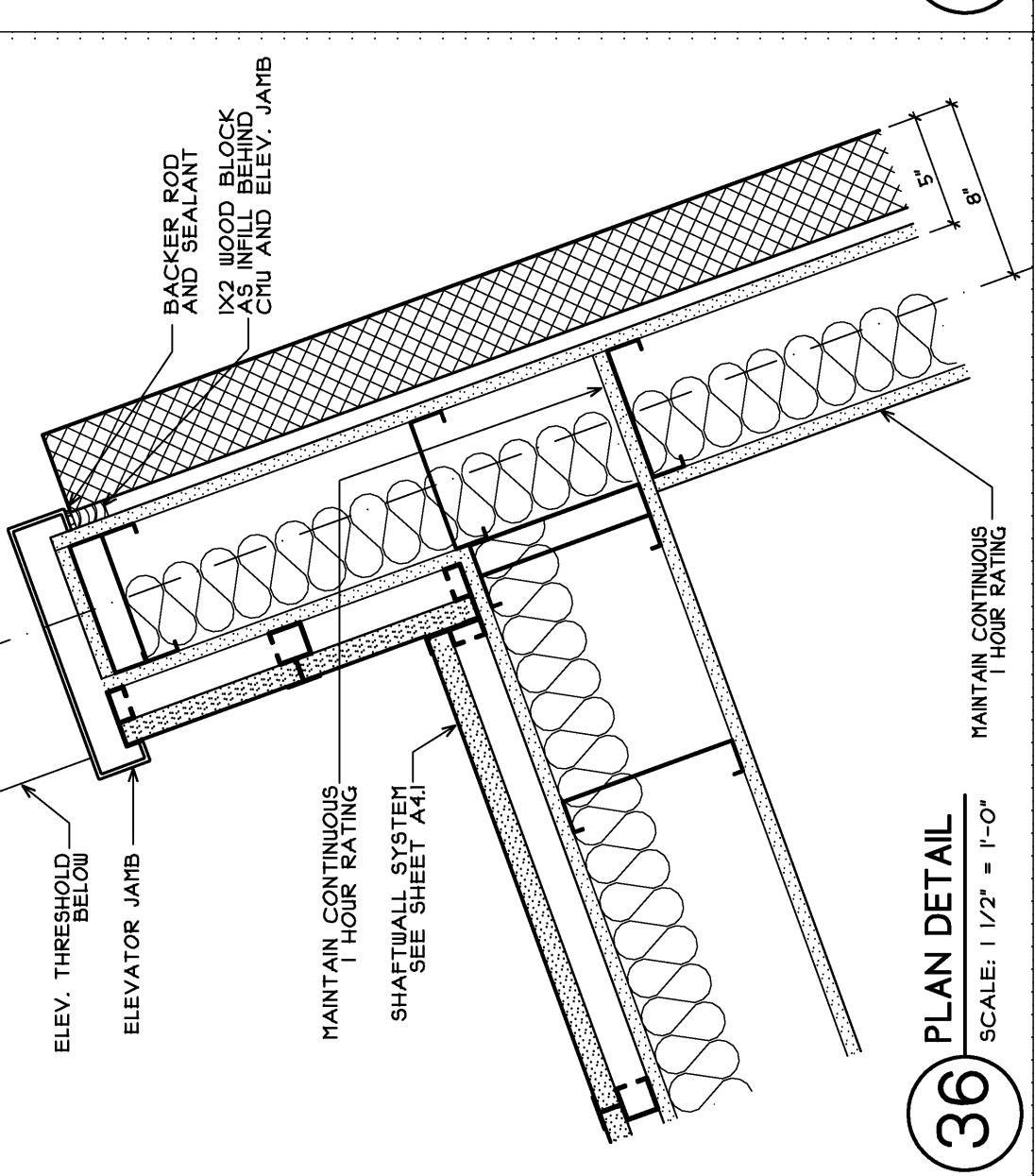
33 PLAN DETAIL
SCALE: 1/2" = 1'-0"



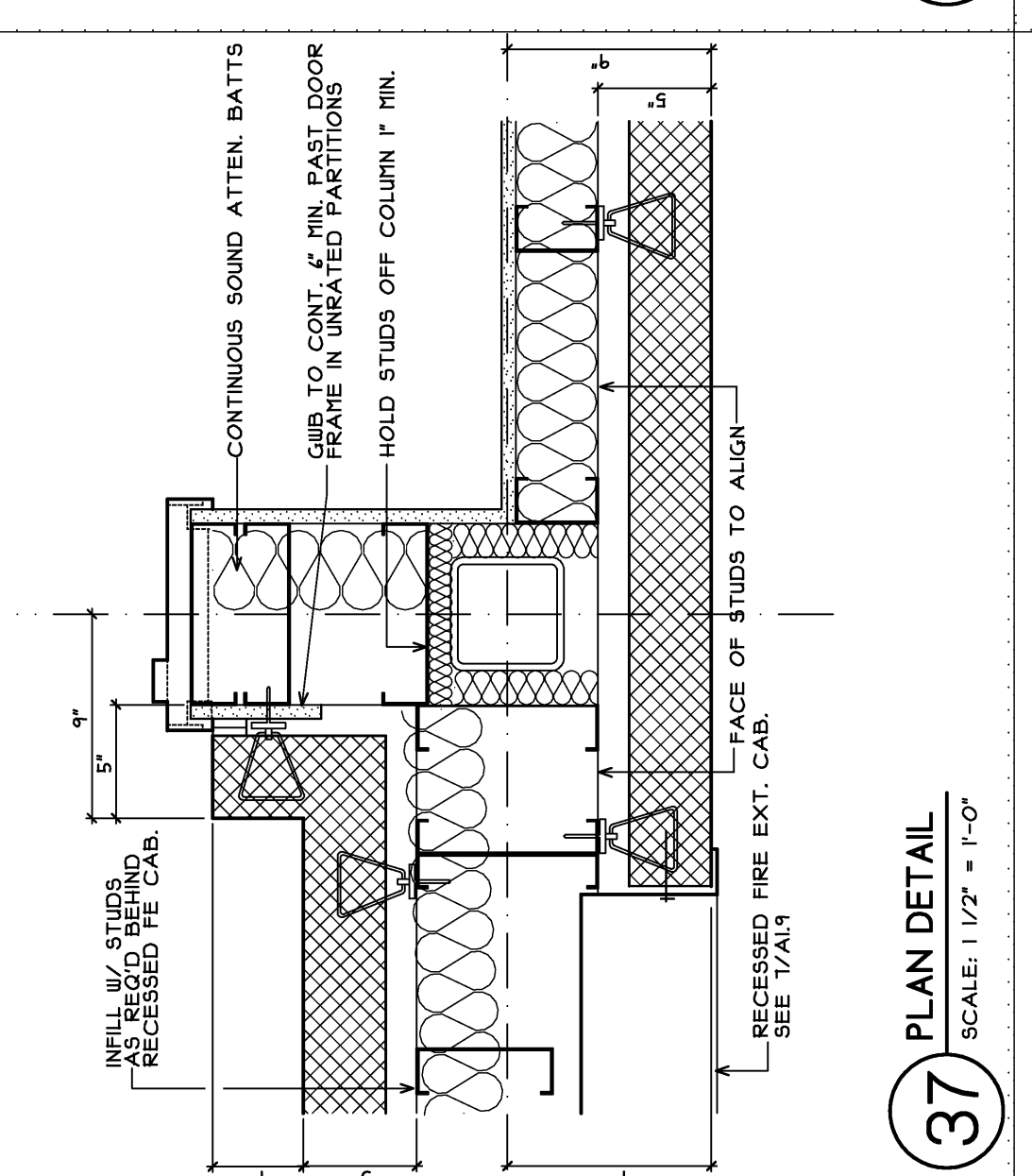
34 PLAN DETAIL
SCALE: 1/2" = 1'-0"



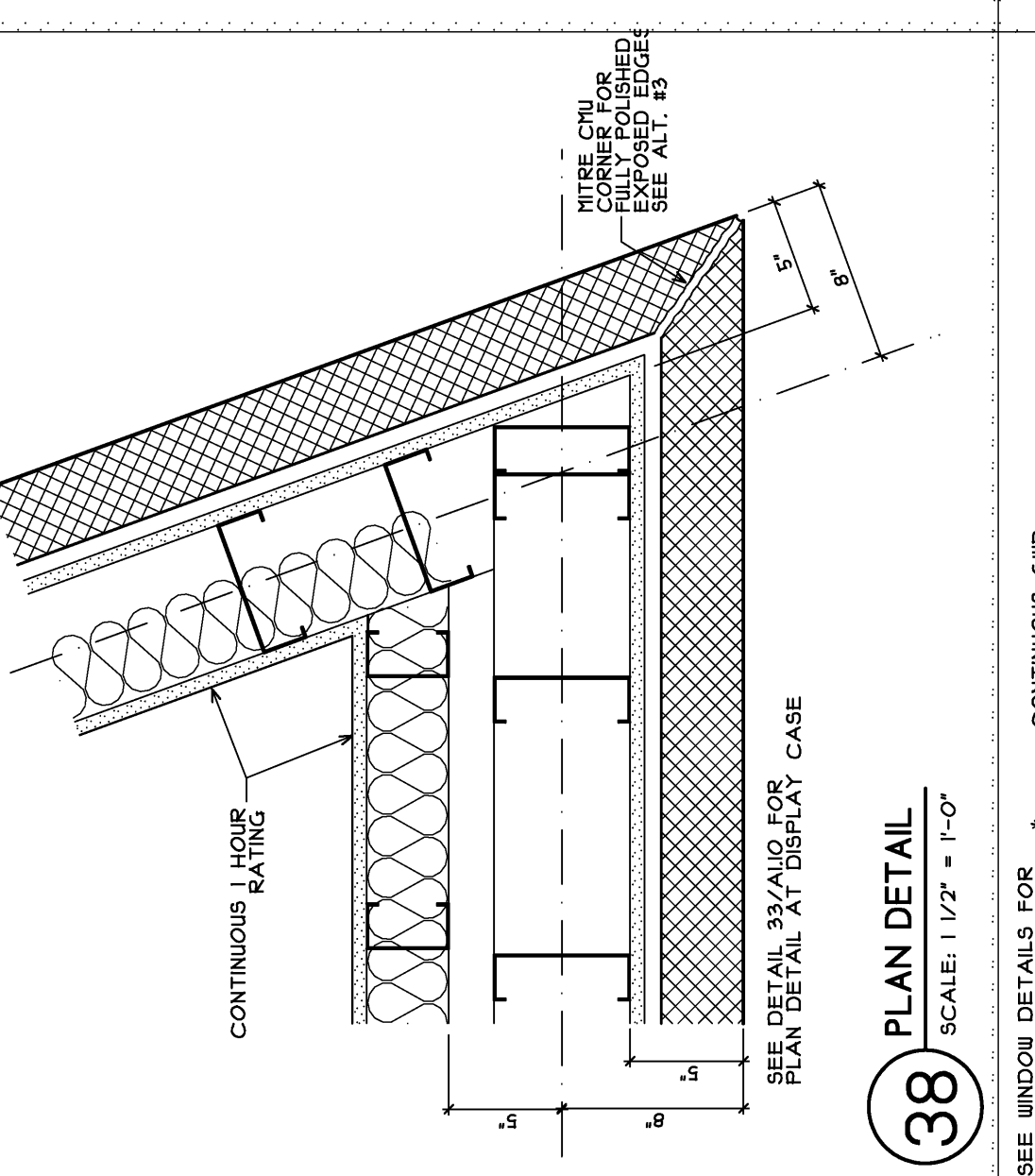
35 PLAN DETAIL
SCALE: 1/2" = 1'-0"



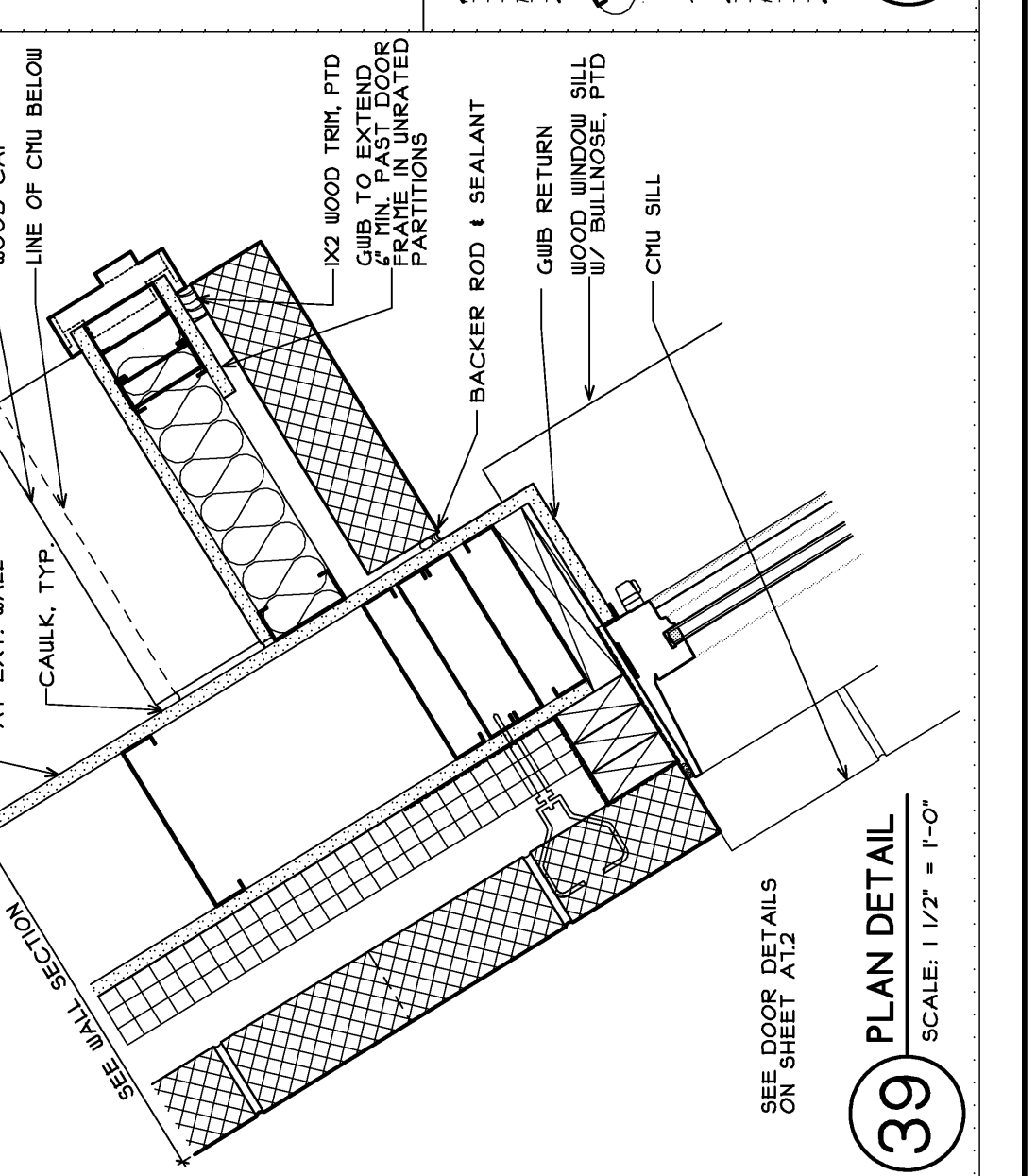
36 PLAN DETAIL
SCALE: 1/2" = 1'-0"



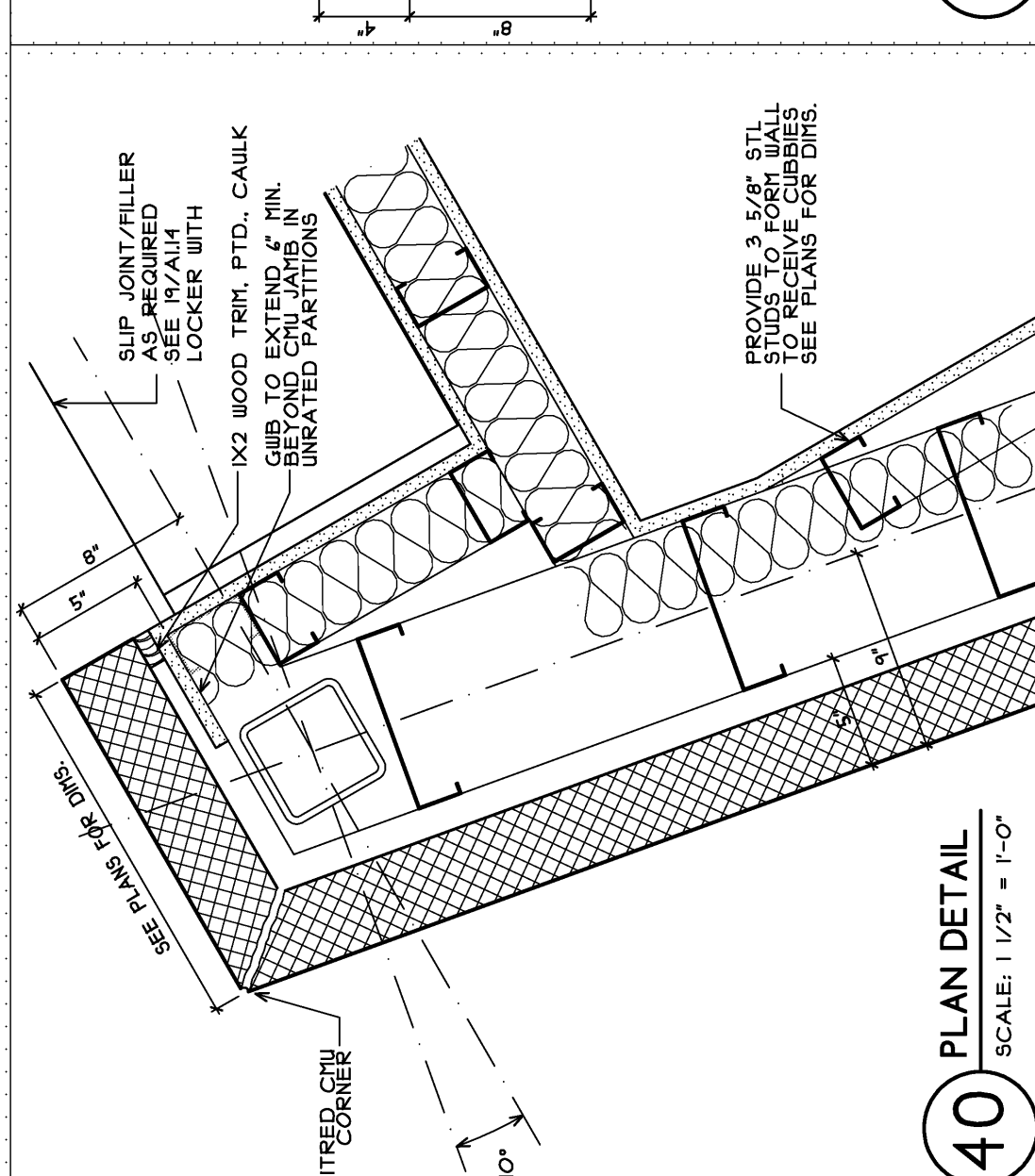
37 PLAN DETAIL
SCALE: 1/2" = 1'-0"



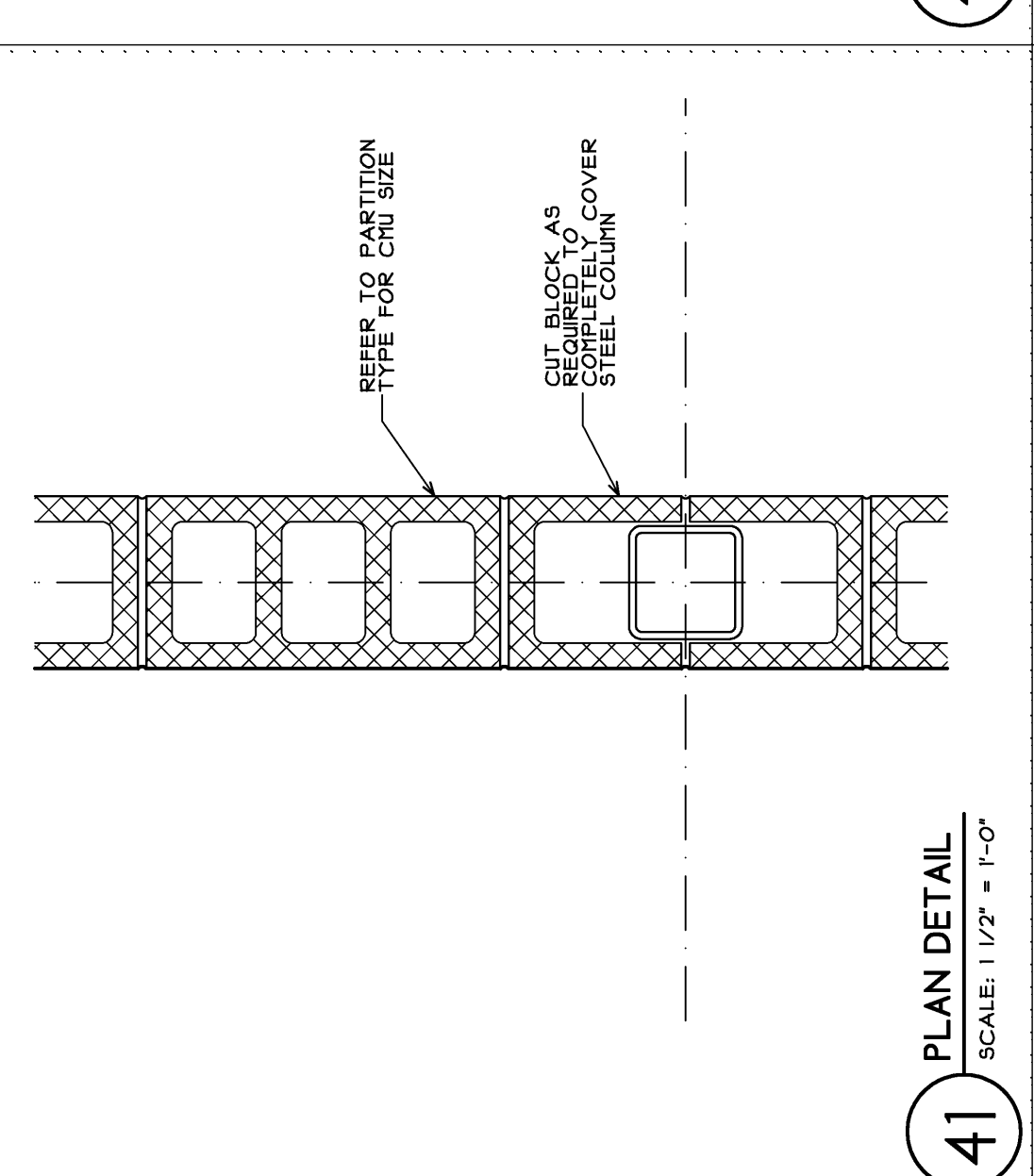
38 PLAN DETAIL
SCALE: 1/2" = 1'-0"



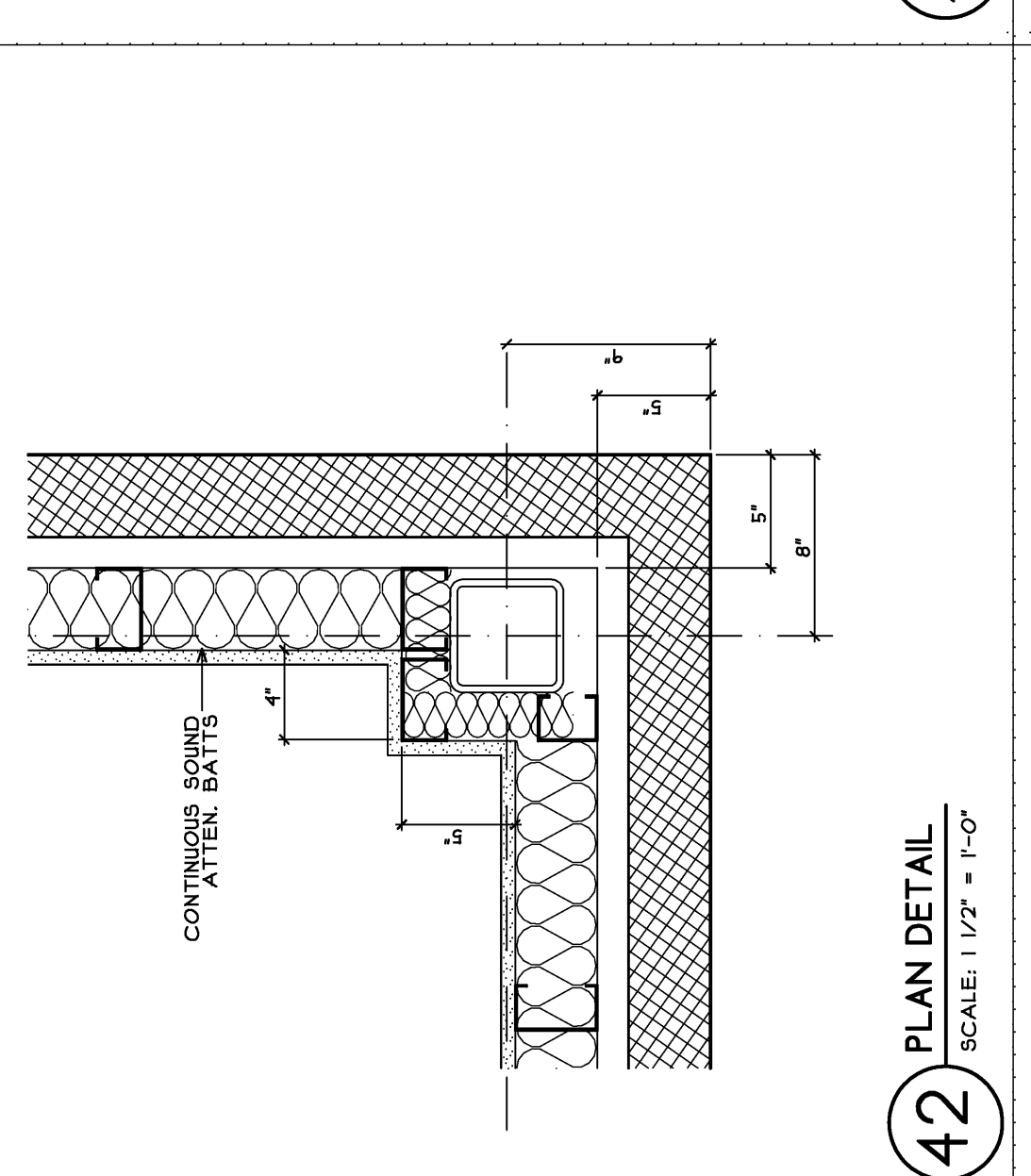
39 PLAN DETAIL
SCALE: 1/2" = 1'-0"



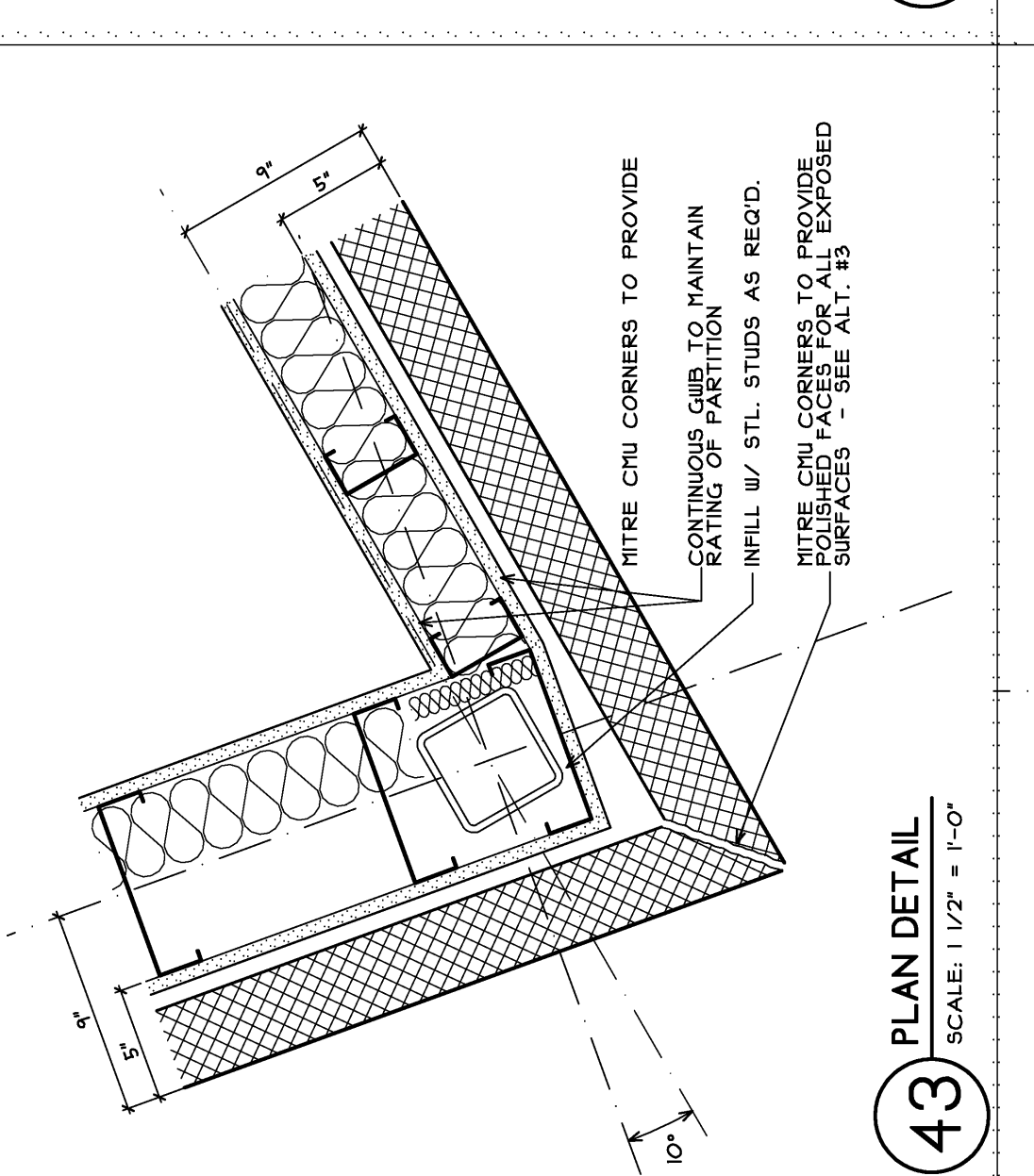
40 PLAN DETAIL
SCALE: 1/2" = 1'-0"



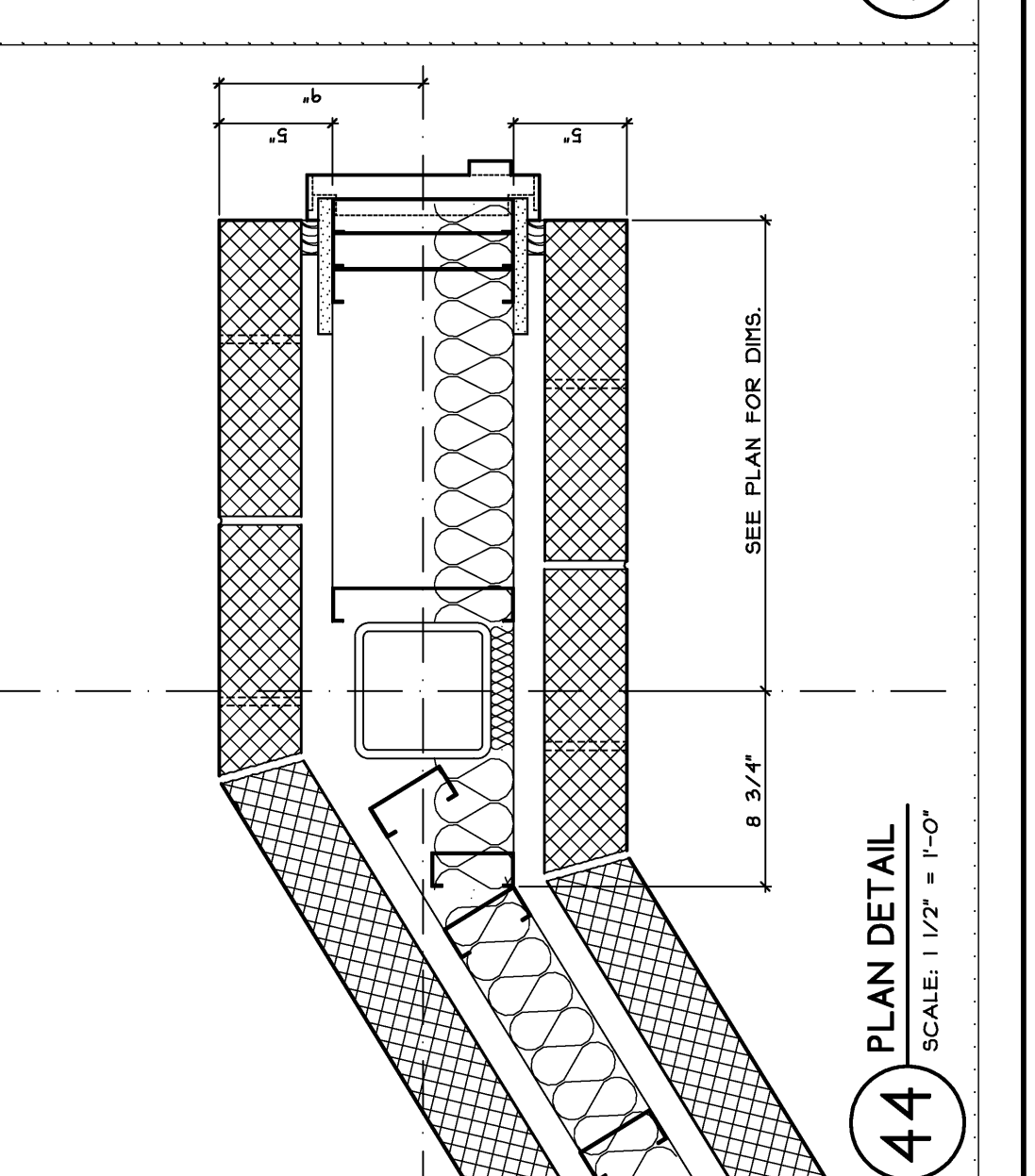
41 PLAN DETAIL
SCALE: 1/2" = 1'-0"



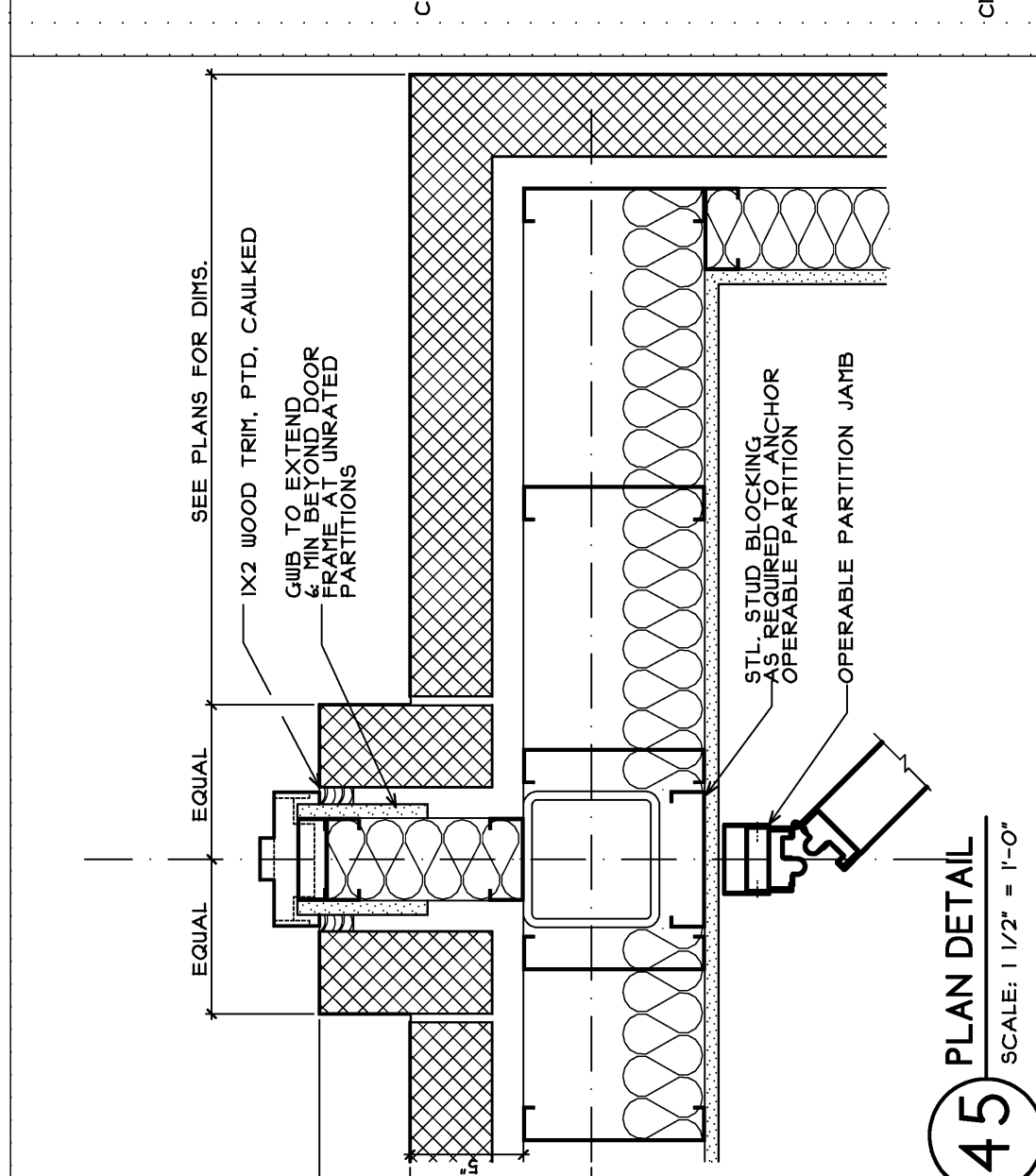
42 PLAN DETAIL
SCALE: 1/2" = 1'-0"



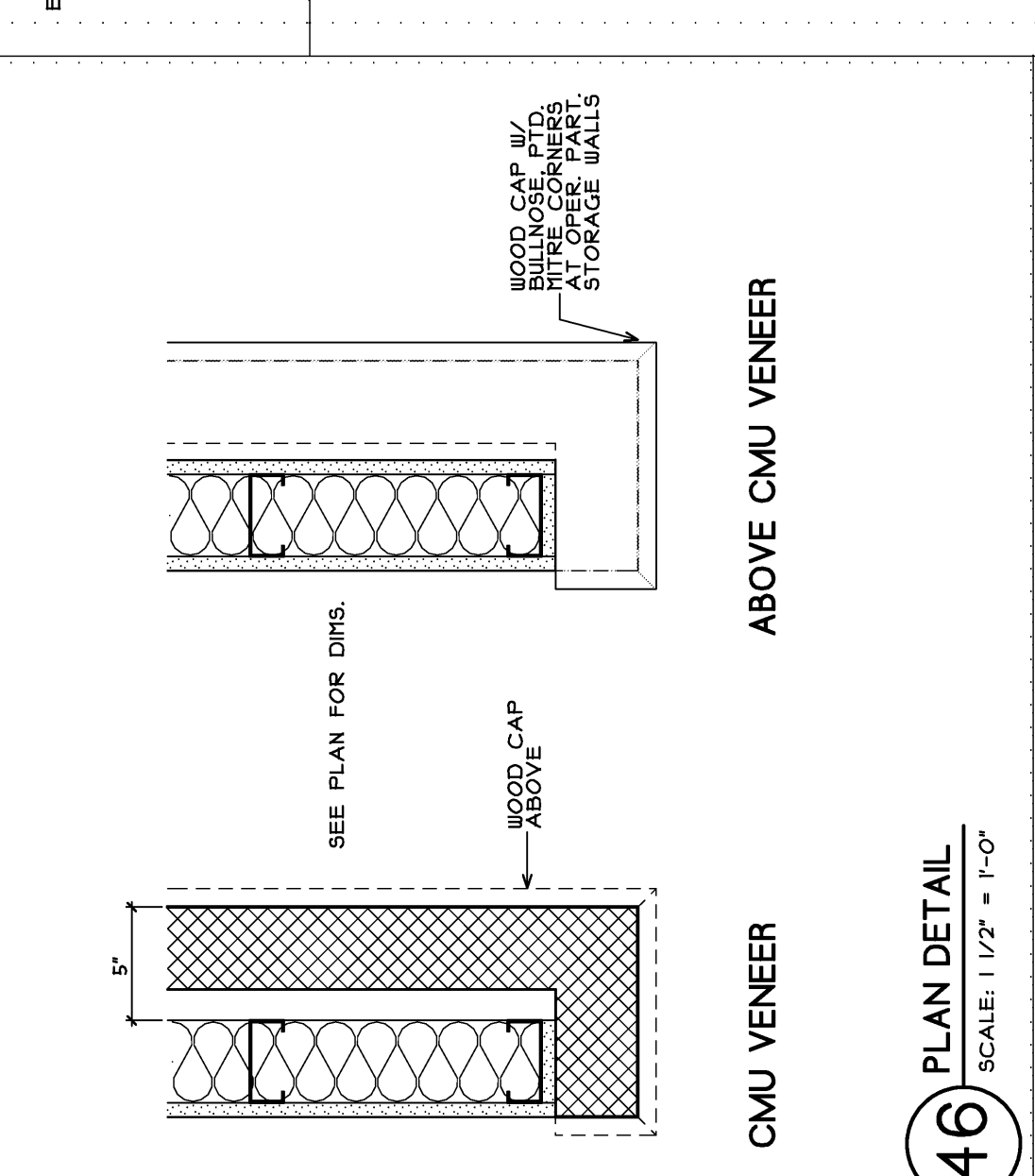
43 PLAN DETAIL
SCALE: 1/2" = 1'-0"



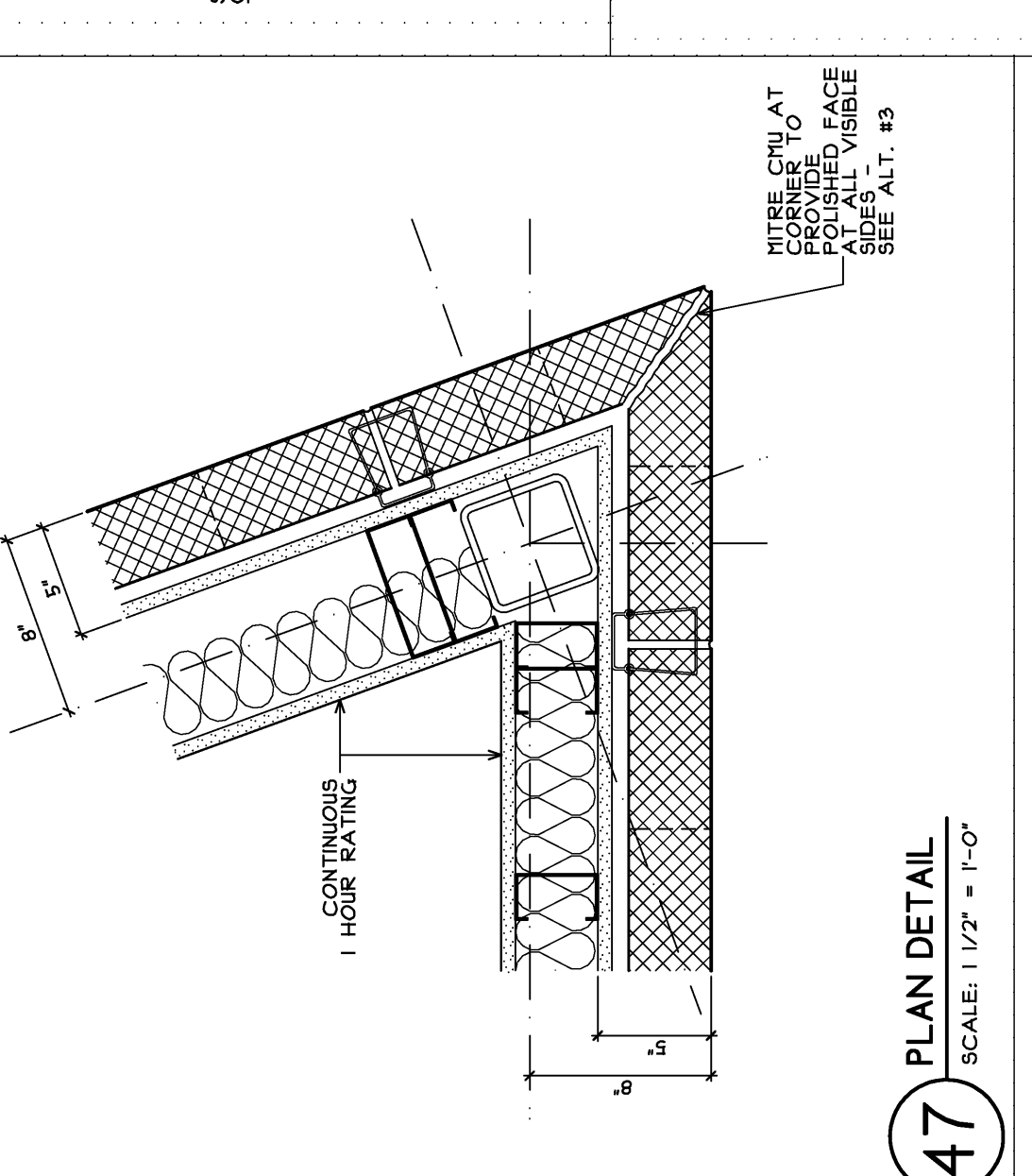
44 PLAN DETAIL
SCALE: 1/2" = 1'-0"



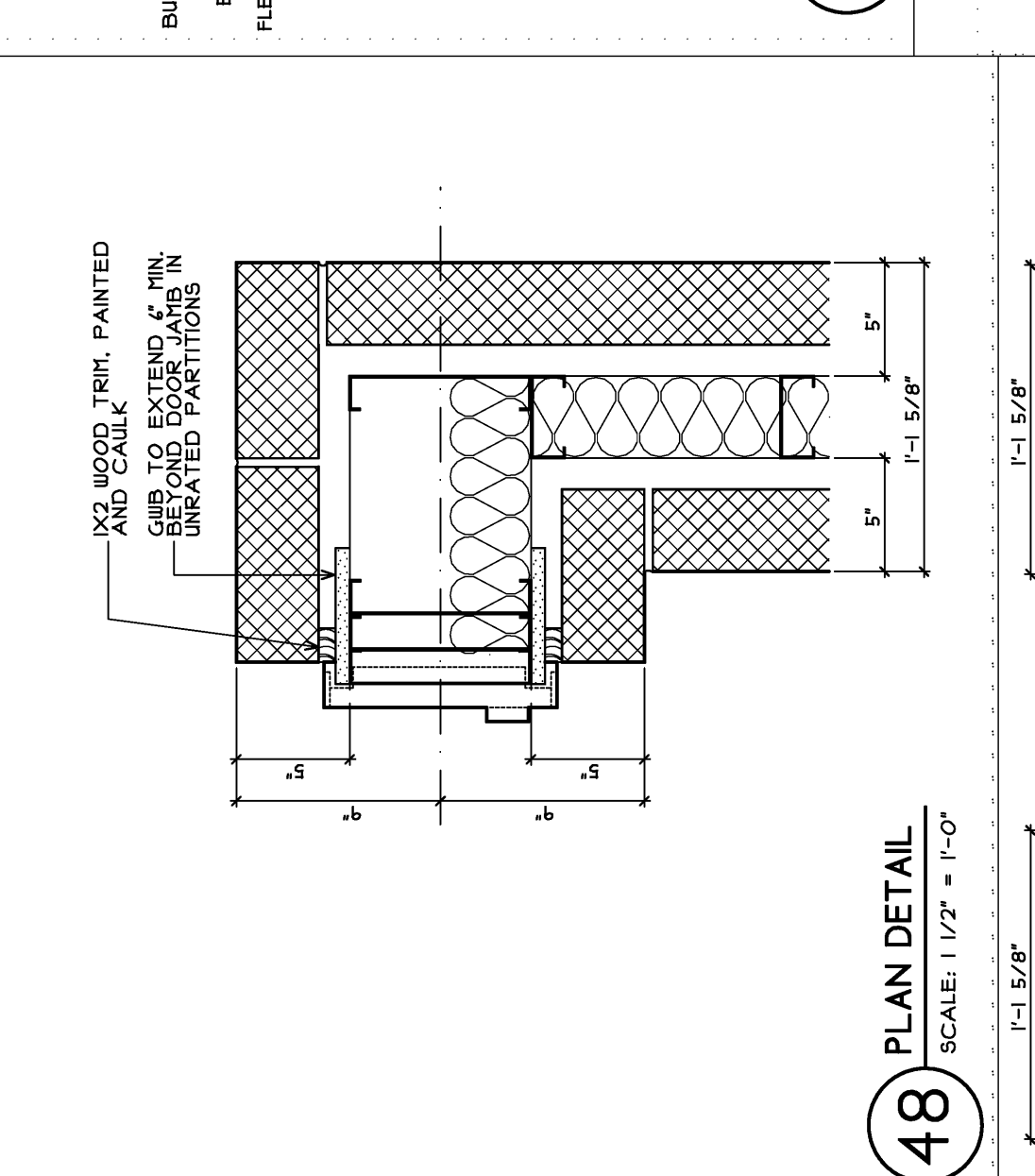
45 PLAN DETAIL
SCALE: 1/2" = 1'-0"



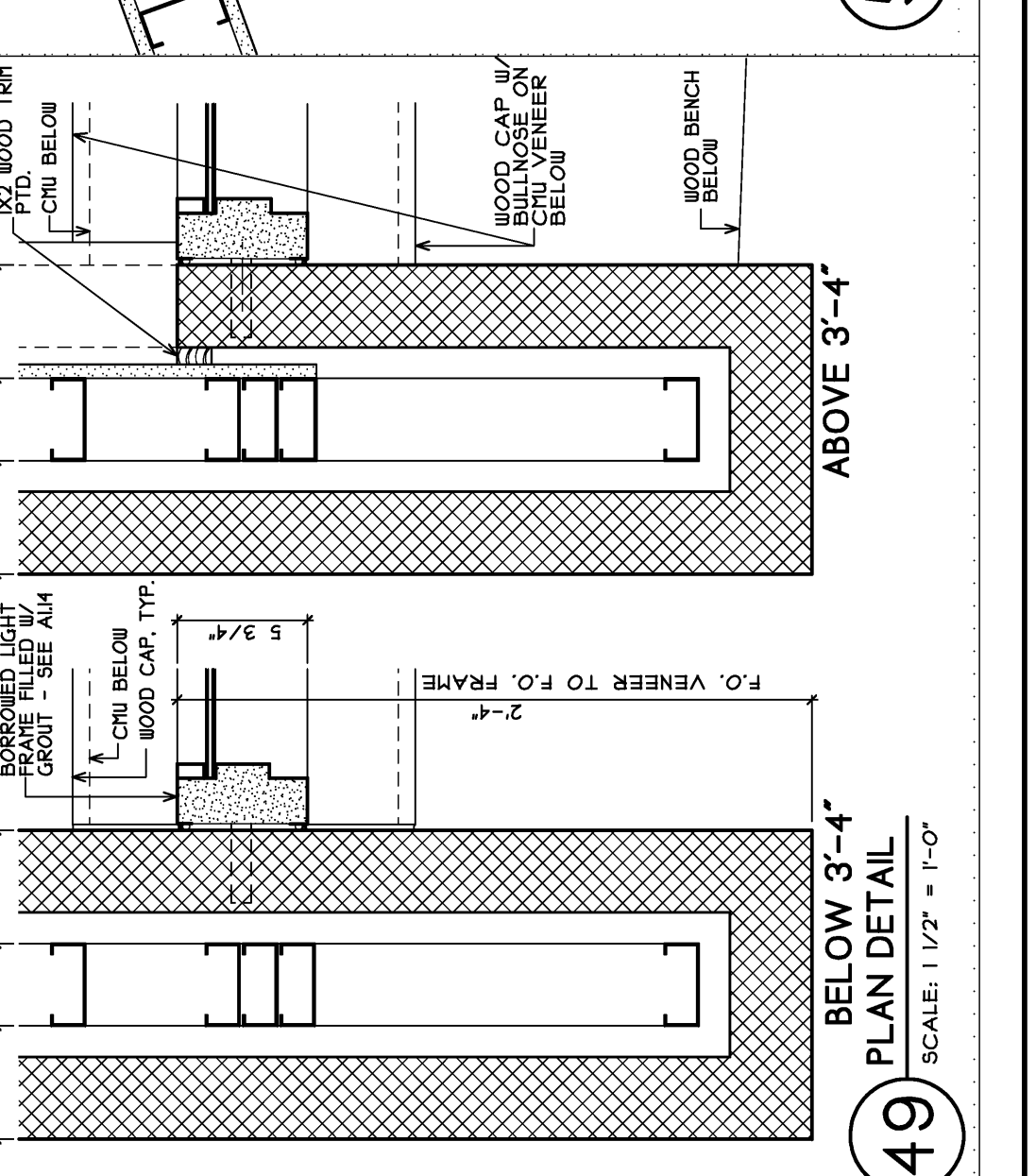
46 PLAN DETAIL
SCALE: 1/2" = 1'-0"



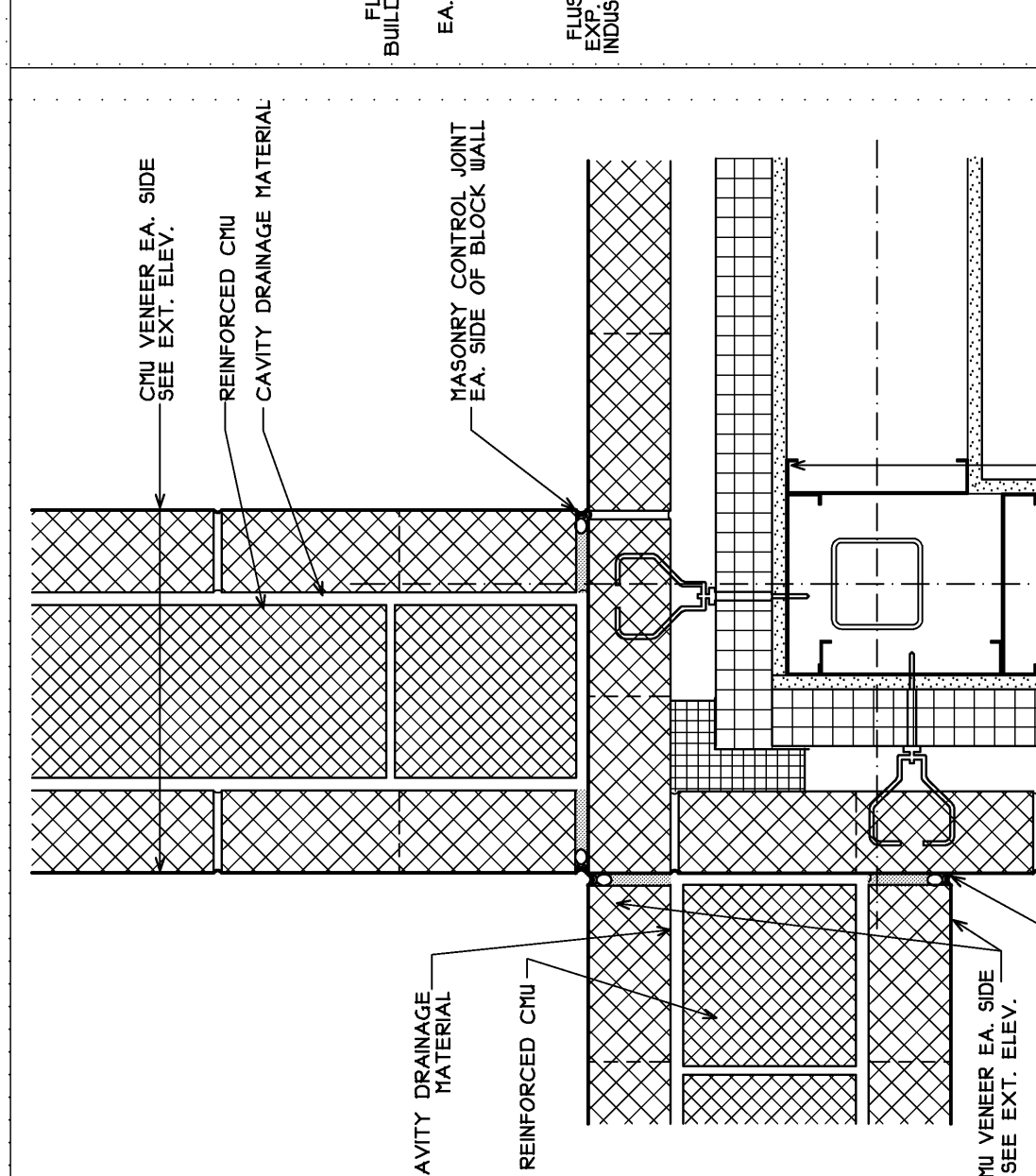
47 PLAN DETAIL
SCALE: 1/2" = 1'-0"



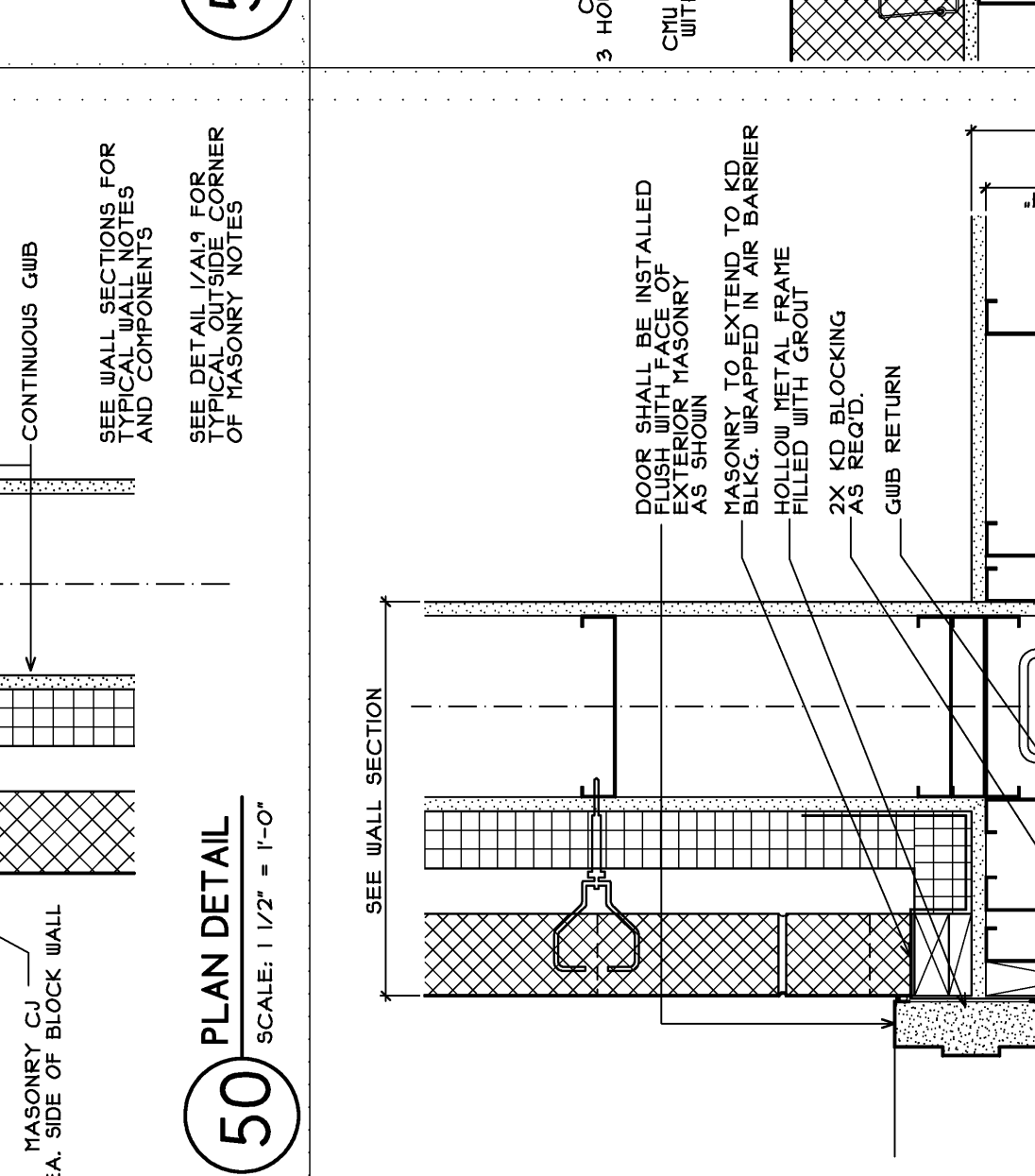
48 PLAN DETAIL
SCALE: 1/2" = 1'-0"



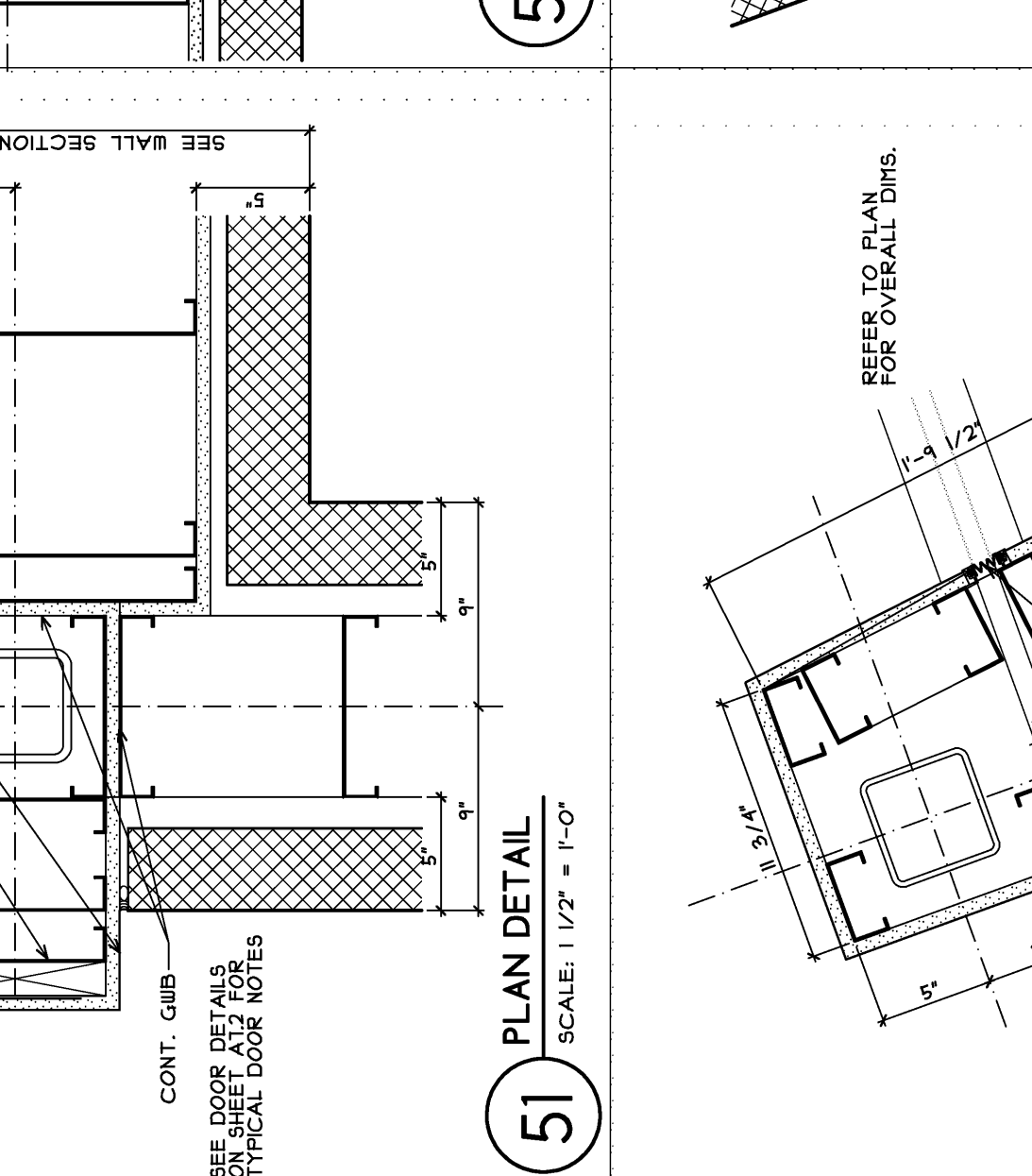
49 PLAN DETAIL
SCALE: 1/2" = 1'-0"



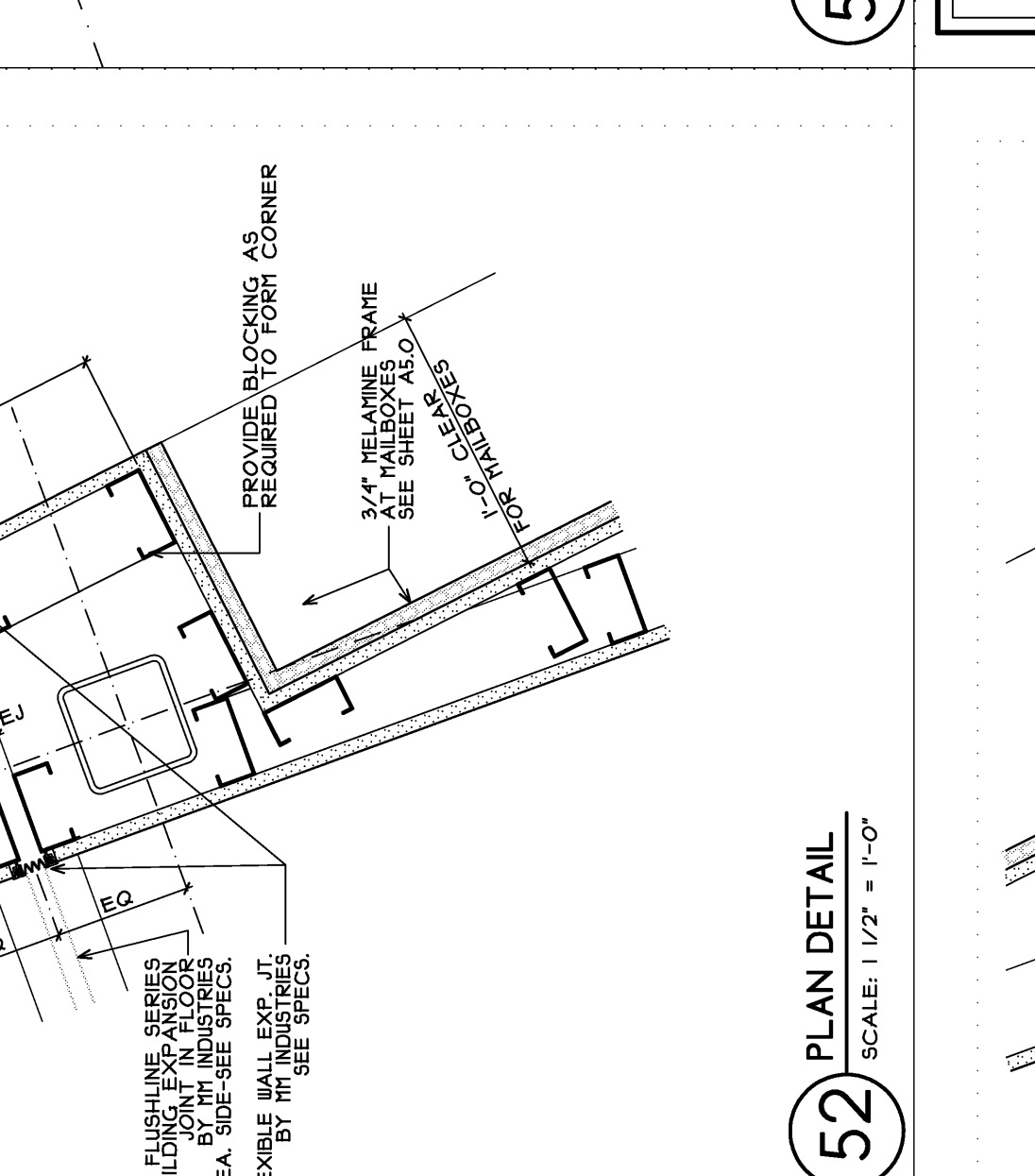
50 PLAN DETAIL
SCALE: 1/2" = 1'-0"



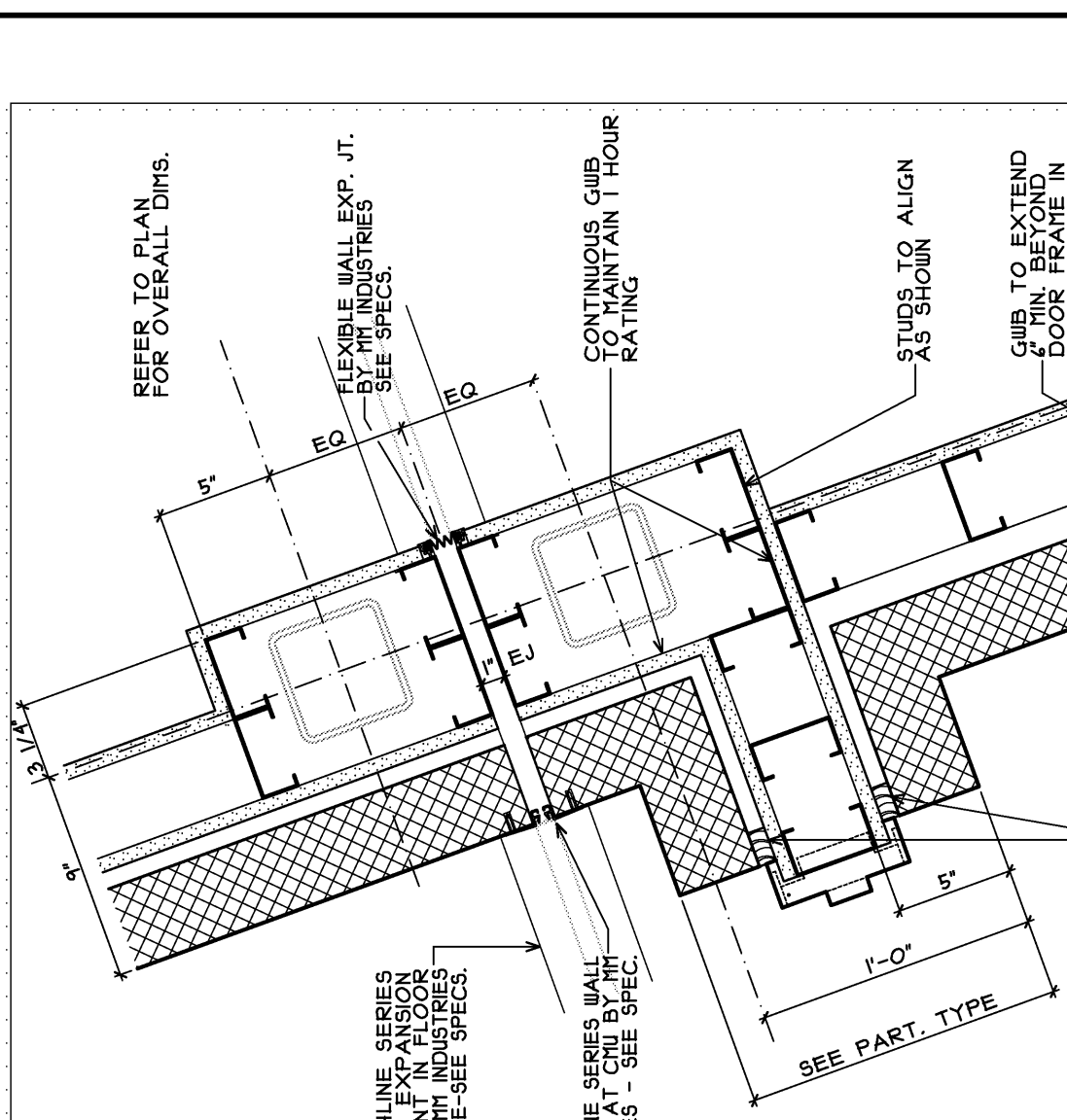
51 PLAN DETAIL
SCALE: 1/2" = 1'-0"



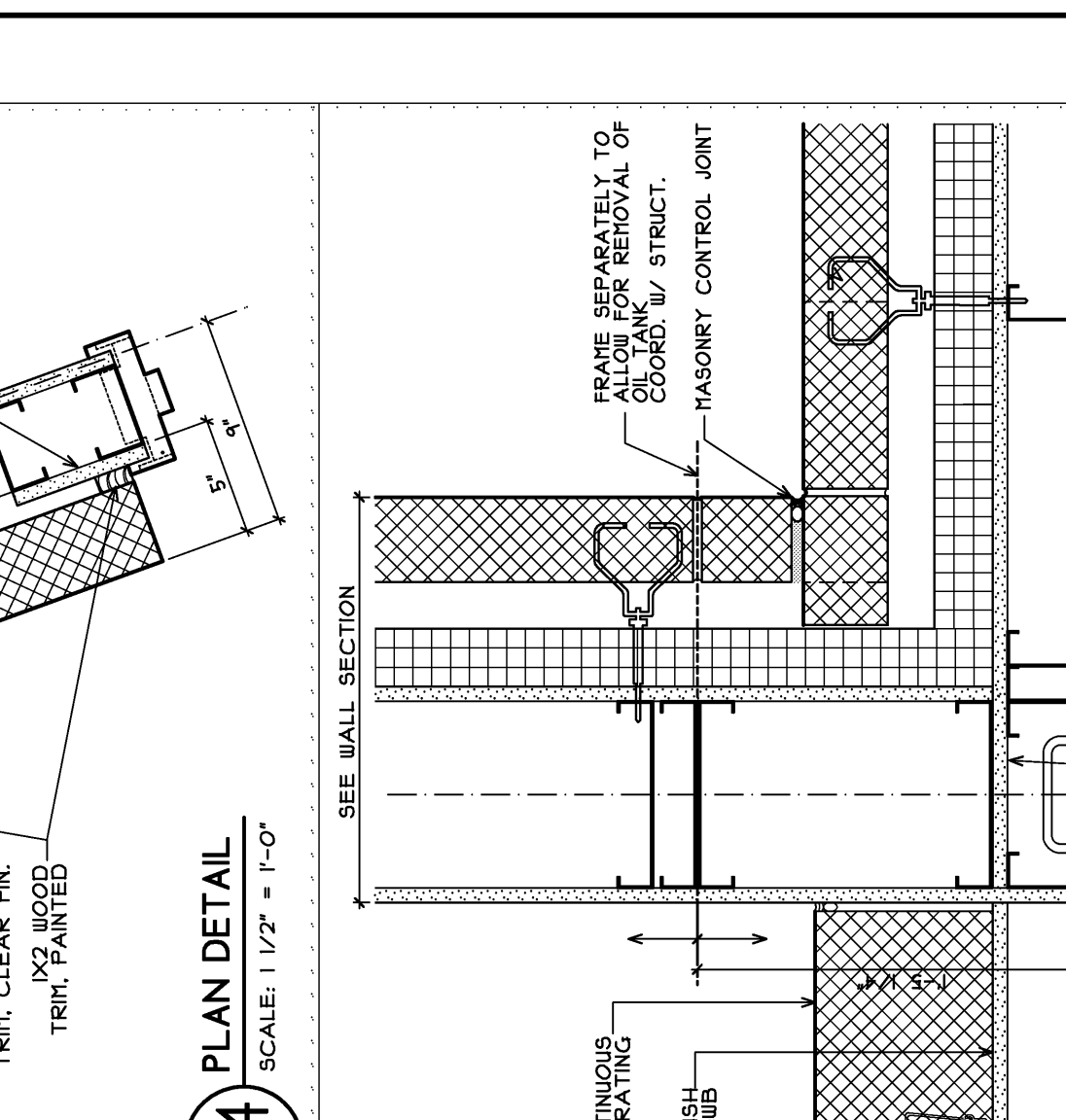
52 PLAN DETAIL
SCALE: 1/2" = 1'-0"



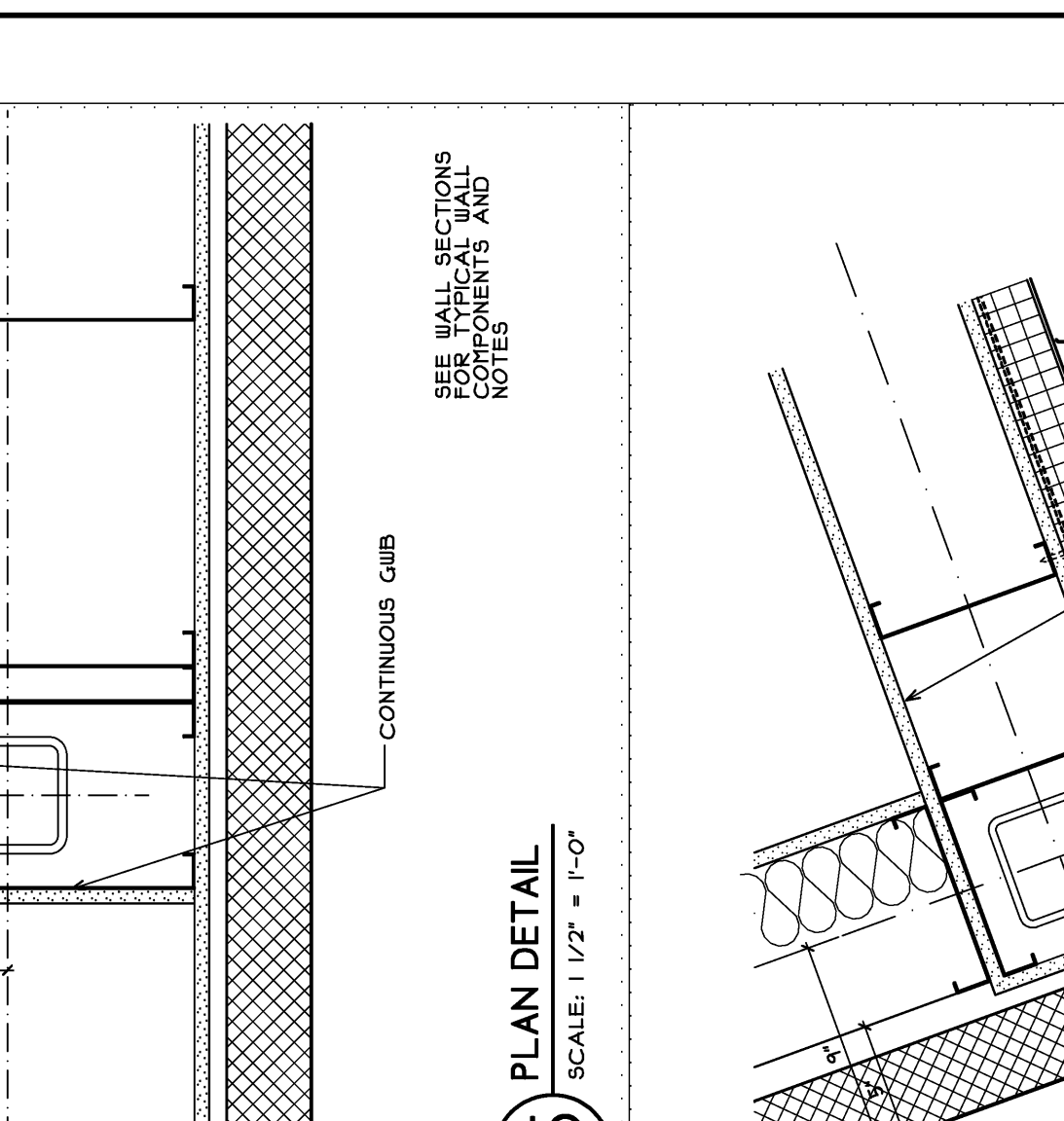
53 PLAN DETAIL
SCALE: 1/2" = 1'-0"



54 PLAN DETAIL
SCALE: 1/2" = 1'-0"



55 PLAN DETAIL
SCALE: 1/2" = 1'-0"



56 PLAN DETAIL
SCALE: 1/2" = 1'-0"

East End Elementary School
Portland Public Schools
Portland, Maine

DATE: 05/11/2011
DRAWN BY: AS NOTED
CHECKED BY: JPH
DESIGNED BY: JPH

Plan Details

Consultants:
Civil Engineer: DeLuca-Hoffman Associates
Landscape Architect: Carroll Associates
Structural Engineer: Pintham & Greer
Mechanical Engineer: Bennett Engineering
Electrical Engineer: Bartlett Design
Kitchen Design: J2H Consulting
Fire Protection: Fire Solutions

10 Durham Street
Portland, ME 04103
508.775.1111
508.775.2005
508.775.2005
eastend@eastend.com

A1.10