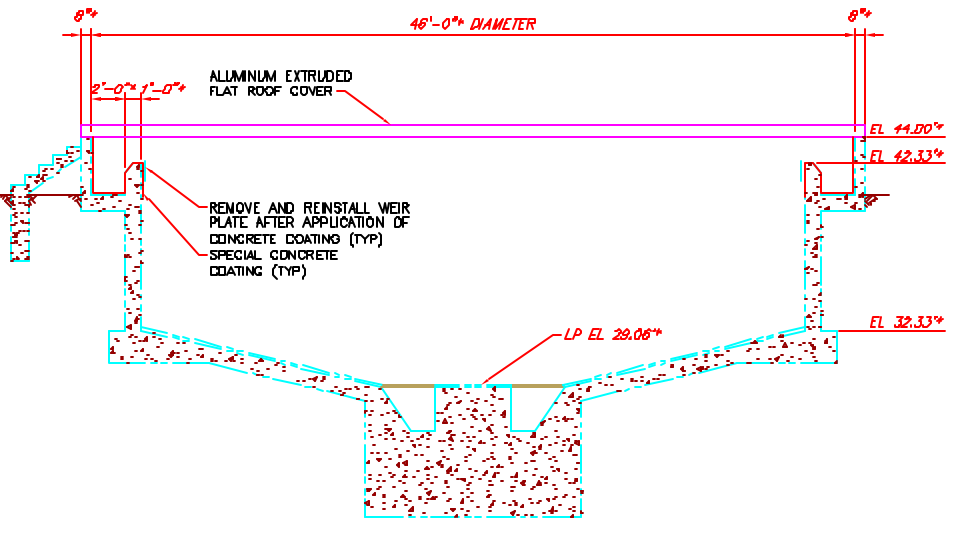
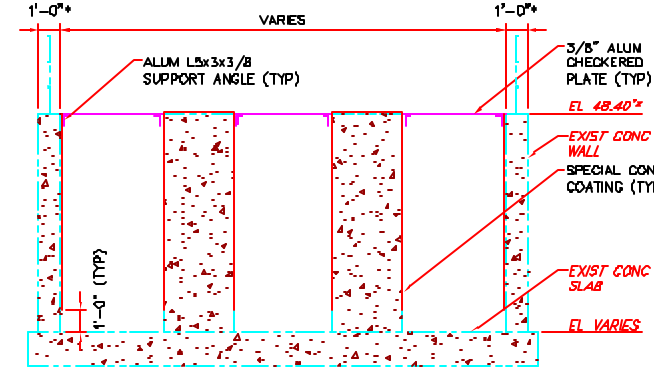
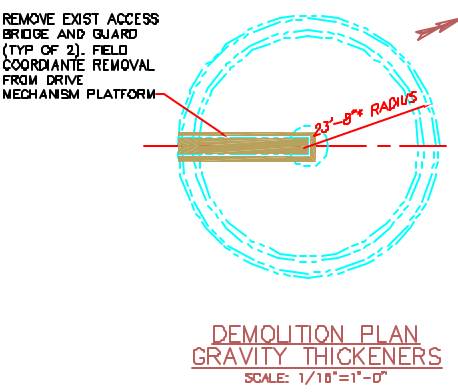


NOTES:

1. * INDICATES DIMENSIONS AND/OR ELEVATIONS TAKEN FROM THE FOLLOWING RECORD DRAWING:
 A. POLLUTION ABATEMENT FACILITIES - CONTRACT NO. 6 WASTEWATER TREATMENT PLANT, PORTLAND WATER DISTRICT, BY CAMP DRESSER & WICKE INC., DATED FEBRUARY 1973.
 B. GRIT REMOVAL AND FLOW SPLITTING FACILITIES UPGRADE, PORTLAND WATER DISTRICT, PORTLAND, MAINE BY WRIGHT-PIERCE DATED MARCH 2000.
 GENERAL CONTRACTOR SHALL FIELD VERIFY ALL DIMENSIONS AND ELEVATIONS AND NOTIFY THE ENGINEER OF ANY DISCREPANCIES.
2. DESIGN LIVE LOAD FOR ALUMINUM COVERS = 80 PSF (GROUND SNOW LOAD).
3. (X) INDICATES STRUCTURAL PIPE SUPPORT FRAMING
4. (S) INDICATES PIPE SUPPORT. SEE DRAWING S-3 FOR PIPE SUPPORT TYPES.
5. SEE DRAWINGS S-12 THROUGH S-16 FOR STRUCTURAL PIPE SUPPORT FRAMING DETAILS.
6. SEE DRAWING S-18 FOR DETAILS OF CHECKERED PLATE AT EXISTING SLIDE GATES.
7. FOR GENERAL STRUCTURAL NOTES AND STANDARD DETAILS SEE DRAWINGS S-17, S-18 AND S-19.



LIMITS OF SPECIAL CONCRETE COATING
 INFLUENT/EFFLUENT CHANNELS, GRIT CHAMBERS, FLOW SPLITTER STRUCTURE, DISTRIBUTION BOX AND GRAVITY THICKENERS

SCALE: 1/16"=1'-0"

NO.	REVISIONS	DATE	BY	CHKD	APPD	PROGRESS POINTS
1	ISSUED FOR REVIEW	4-4-01				4-4-01
2	ISSUED FOR BIDDING	8-4-01				8-4-01
3	WALL LOCATION					
4	WALL MARKER IN					
5	REVISIONS					

DRAWN BY	DCS
CHECKED BY	WJL/JFB
DATE	5-4-01
APPROVED BY	DCS
DATE	5-4-01
BOOK NO.	7063A
PROJECT NO.	7063A
SCALE	AS NOTED

Wright-Pierce
 89 Wdn Street
 Topsham, Maine USA 0-086
 TEL (207) 725-8721 FAX (207) 728-8414

PORTLAND WATER DISTRICT
 PORTLAND, MAINE
 PRIMARY SEDIMENTATION BASINS
 UPGRADE WITH ODOR CONTROL FACILITIES
 INFLUENT/EFFLUENT CHANNELS AND GRAVITY THICKENERS, ALUMINUM COVERS AND PIPE SUPPORT PLANS AND SECTIONS

DWG S-8
 17 OF 79