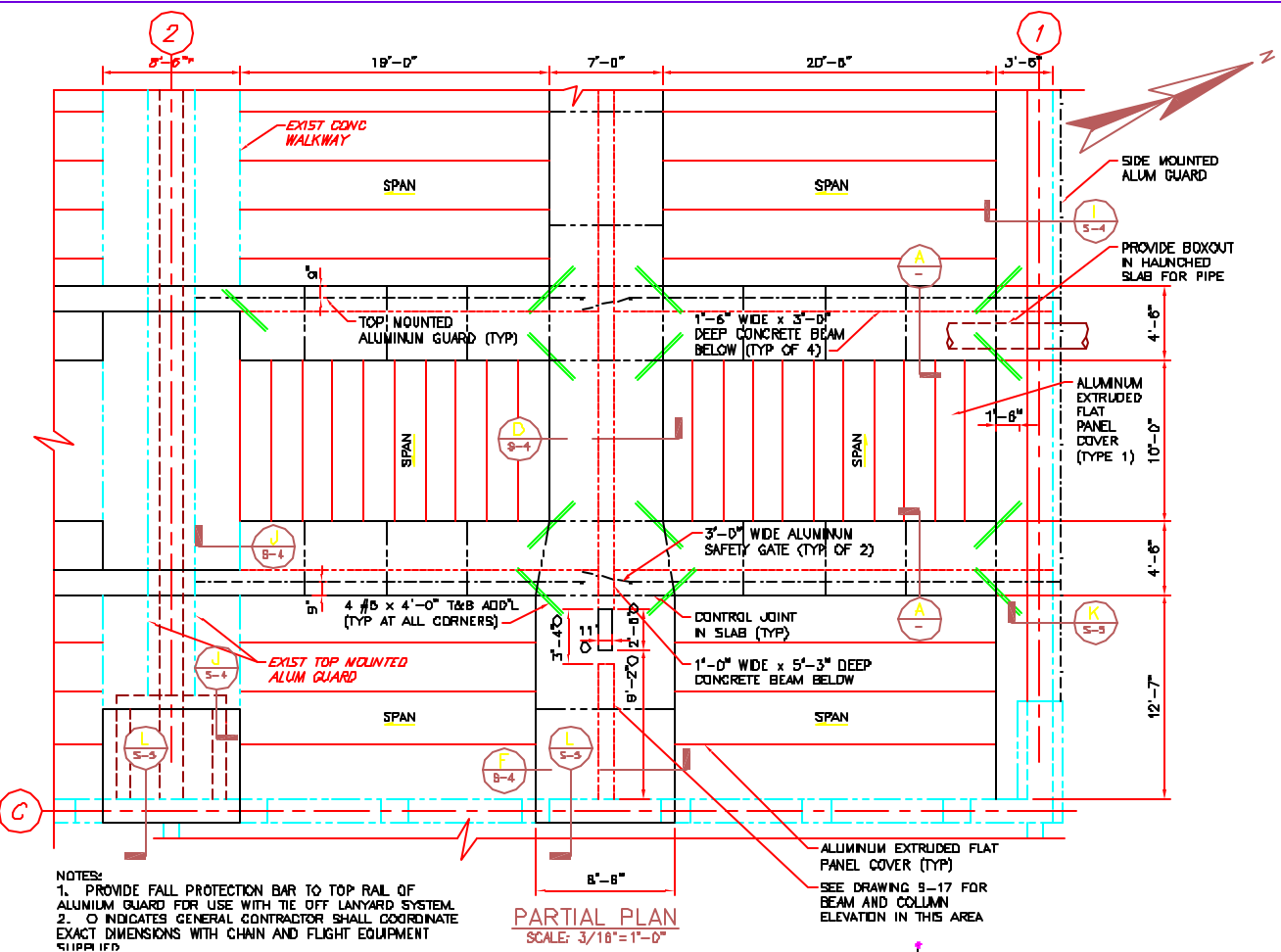


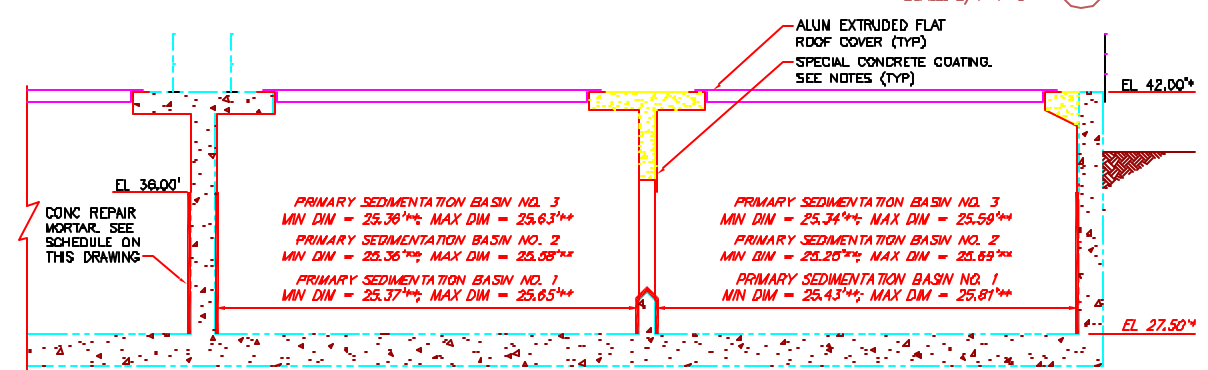
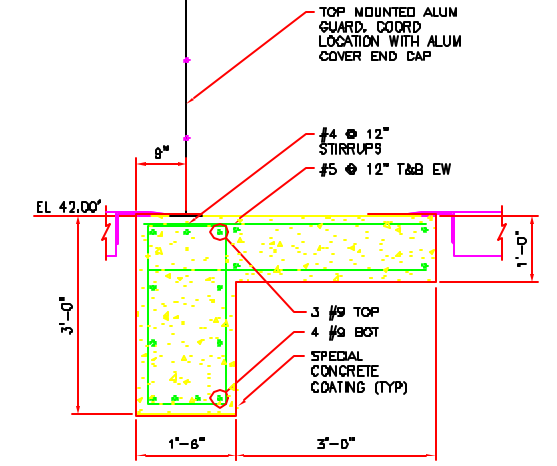
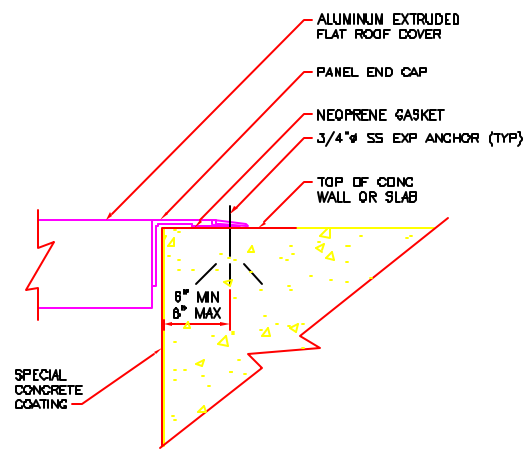
- PIPE SUPPORTS:**
- ▲ PIPE ANCHOR
  - ▲ INVERTED PIPE GUIDE
  - ▲ PIPE GUIDE
  - ▲ PIPE CLEVIS HANGER
  - ▲ PIPE SUPPORT
- SEE SPECIFICATION SECTION 15066 "FIBERGLASS DUCTWORK & FITTINGS" FOR PIPE SUPPORTS

**NOTES:**

1. \* INDICATES DIMENSIONS AND/OR ELEVATIONS TAKEN FROM THE FOLLOWING RECORD DRAWINGS:  
A. POLLUTION ABATEMENT FACILITIES - CONTRACT NO. 6 WASTEWATER TREATMENT PLANT, PORTLAND WATER DISTRICT, BY CAMP DRESSER & MCKEE INC., DATED FEBRUARY 1973.  
B. GRIT REMOVAL AND FLOW SPLITTING FACILITIES UPGRADE, PORTLAND WATER DISTRICT, PORTLAND, MAINE BY WRIGHT-PIERCE DATED MARCH 2000.  
GENERAL CONTRACTOR SHALL FIELD VERIFY ALL DIMENSIONS AND ELEVATIONS AND NOTIFY THE ENGINEER OF ANY DISCREPANCIES.
2. \* THE INTERIOR DIMENSIONS OF THE TANKS VARY AS INDICATED AND ARE BASED ON A LIMITED FIELD SURVEY OF THE TANKS. GENERAL CONTRACTOR SHALL FIELD VERIFY THE TANK DIMENSIONS PRIOR TO THE NEW CONSTRUCTION.
3. THE ALUMINUM ROOF COVERS AND CHECKERED PLATE COVER SYSTEMS SHOWN ON THIS DRAWING AND DRAWINGS S-2, S-7 AND S-8 ARE INTENDED TO PROVIDE A SUBSTANTIALLY GAS TIGHT SYSTEM TO ELIMINATE THE ESCAPE OF ODORS.
4. DESIGN LIVE LOAD FOR ALUMINUM COVERS = 80 PSF (GROUND SNOW LOAD)
5. (X) INDICATES STRUCTURAL PIPE SUPPORT FRAMING
- ▲ INDICATES PIPE SUPPORT. SEE TABLE ON THIS DRAWING FOR PIPE SUPPORT TYPES. SEE DRAWINGS S-12 THROUGH S-10 FOR STRUCTURAL PIPE SUPPORT FRAMING DETAILS.
6. SEE MECHANICAL DRAWINGS FOR ODOR CONTROL PIPE AND INTAKE GOOSENECK LAYOUT AND DETAILS.
7. FOR GENERAL STRUCTURAL NOTES AND STANDARD DETAILS SEE DRAWINGS S-17, S-18 AND S-19.



- NOTES:**
1. PROVIDE FALL PROTECTION BAR TO TOP RAIL OF ALUMINUM GUARD FOR USE WITH THE OFF LANYARD SYSTEM.
  2. (C) INDICATES GENERAL CONTRACTOR SHALL COORDINATE EXACT DIMENSIONS WITH CHAIN AND FLIGHT EQUIPMENT



PROGRESS PAGES	ISSUED FOR REVIEW	DATE	ISSUED FOR BIDDING	DATE	REVISIONS	NO.	DATE	BY	CHKD.	APP'D.
1-P-01	1-P-01		1-P-01							
1-P-02	1-P-02		1-P-02							
1-P-03	1-P-03		1-P-03							
1-P-04	1-P-04		1-P-04							
1-P-05	1-P-05		1-P-05							
1-P-06	1-P-06		1-P-06							
1-P-07	1-P-07		1-P-07							
1-P-08	1-P-08		1-P-08							
1-P-09	1-P-09		1-P-09							
1-P-10	1-P-10		1-P-10							
1-P-11	1-P-11		1-P-11							
1-P-12	1-P-12		1-P-12							
1-P-13	1-P-13		1-P-13							
1-P-14	1-P-14		1-P-14							
1-P-15	1-P-15		1-P-15							
1-P-16	1-P-16		1-P-16							
1-P-17	1-P-17		1-P-17							
1-P-18	1-P-18		1-P-18							
1-P-19	1-P-19		1-P-19							
1-P-20	1-P-20		1-P-20							
1-P-21	1-P-21		1-P-21							
1-P-22	1-P-22		1-P-22							
1-P-23	1-P-23		1-P-23							
1-P-24	1-P-24		1-P-24							
1-P-25	1-P-25		1-P-25							
1-P-26	1-P-26		1-P-26							
1-P-27	1-P-27		1-P-27							
1-P-28	1-P-28		1-P-28							
1-P-29	1-P-29		1-P-29							
1-P-30	1-P-30		1-P-30							
1-P-31	1-P-31		1-P-31							
1-P-32	1-P-32		1-P-32							
1-P-33	1-P-33		1-P-33							
1-P-34	1-P-34		1-P-34							
1-P-35	1-P-35		1-P-35							
1-P-36	1-P-36		1-P-36							
1-P-37	1-P-37		1-P-37							
1-P-38	1-P-38		1-P-38							
1-P-39	1-P-39		1-P-39							
1-P-40	1-P-40		1-P-40							
1-P-41	1-P-41		1-P-41							
1-P-42	1-P-42		1-P-42							
1-P-43	1-P-43		1-P-43							
1-P-44	1-P-44		1-P-44							
1-P-45	1-P-45		1-P-45							
1-P-46	1-P-46		1-P-46							
1-P-47	1-P-47		1-P-47							
1-P-48	1-P-48		1-P-48							
1-P-49	1-P-49		1-P-49							
1-P-50	1-P-50		1-P-50							

**Wright-Pierce**  
58 Main Street  
Topsham, Maine USA 04086  
TEL (207) 725-4721 FAX (207) 729-8414

PORTLAND WATER DISTRICT  
PORTLAND, MAINE  
PRIMARY SEDIMENTATION BASINS  
UPGRADE WITH ODOR CONTROL FACILITIES  
PIPE SUPPORT PLAN AND DETAILS

PRIMARY SEDIMENTATION BASINS  
ALUMINUM COVER AND  
PIPE SUPPORT PLAN AND DETAILS

DWG S-3  
12 OF 79