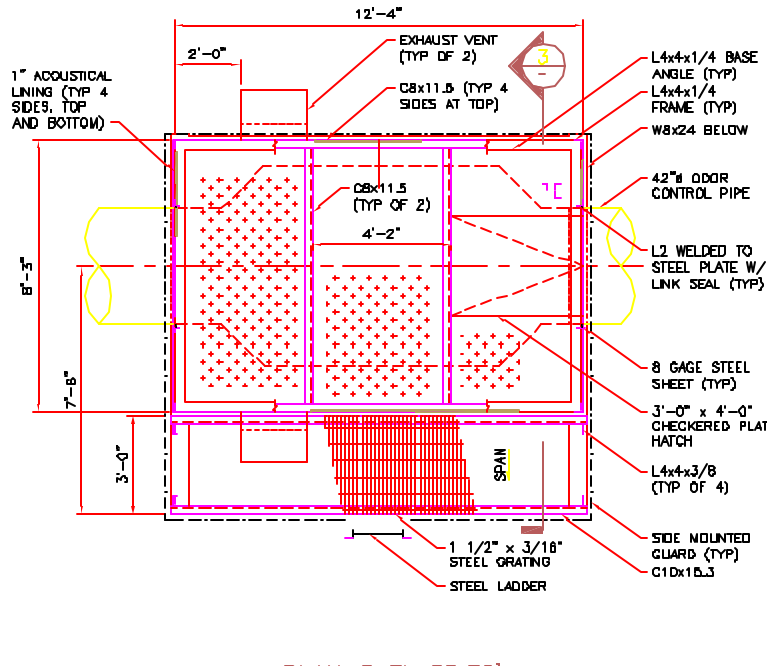
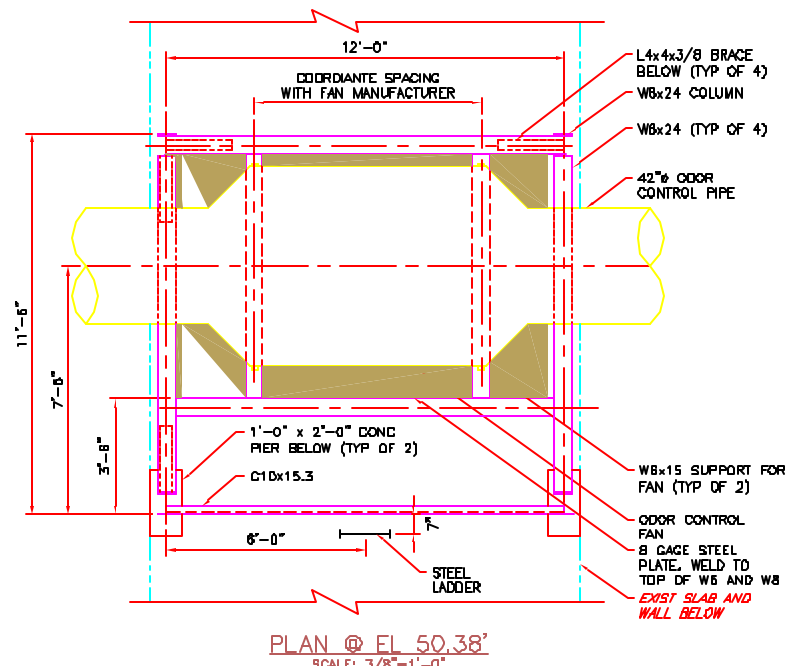
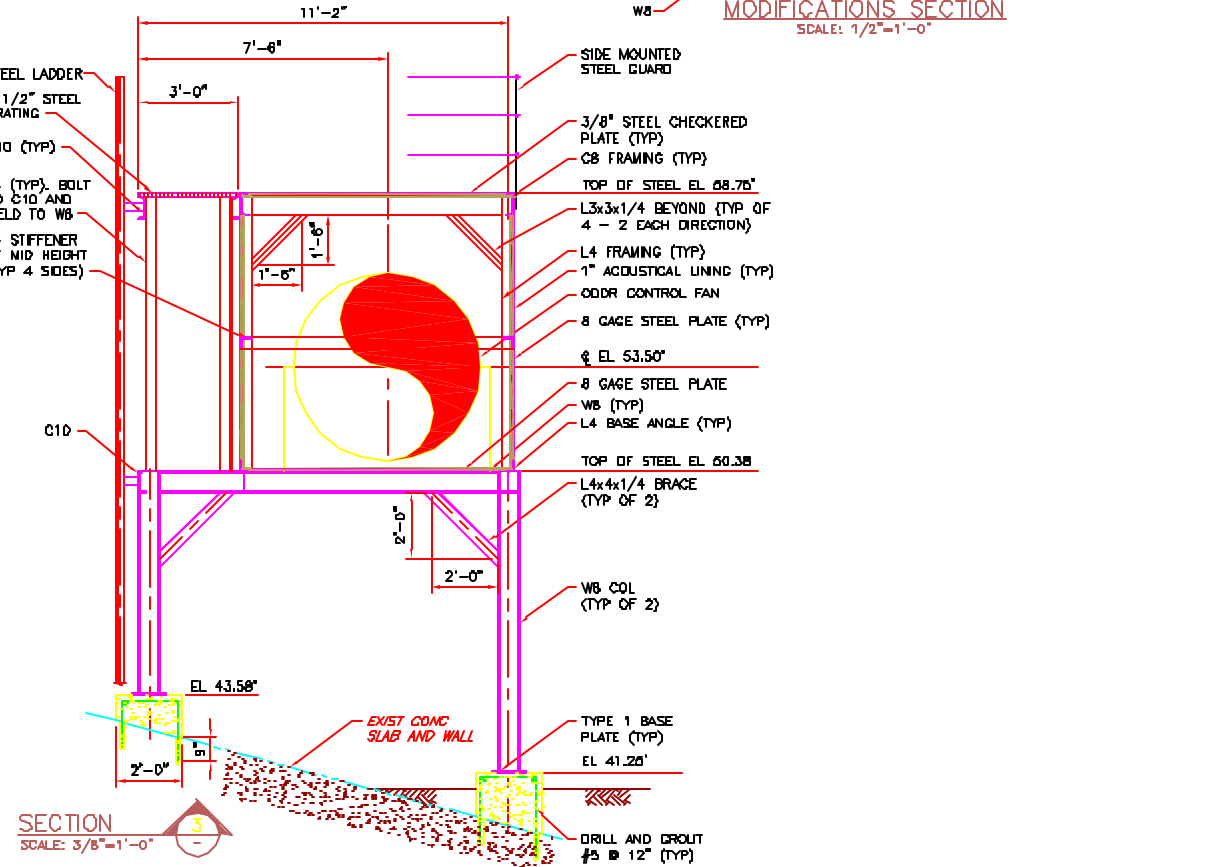
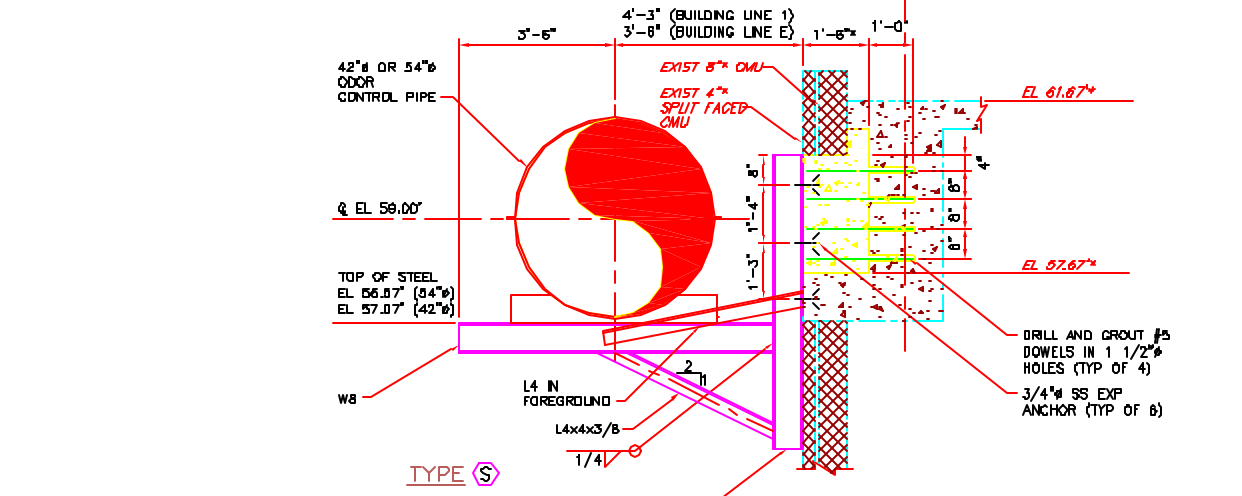
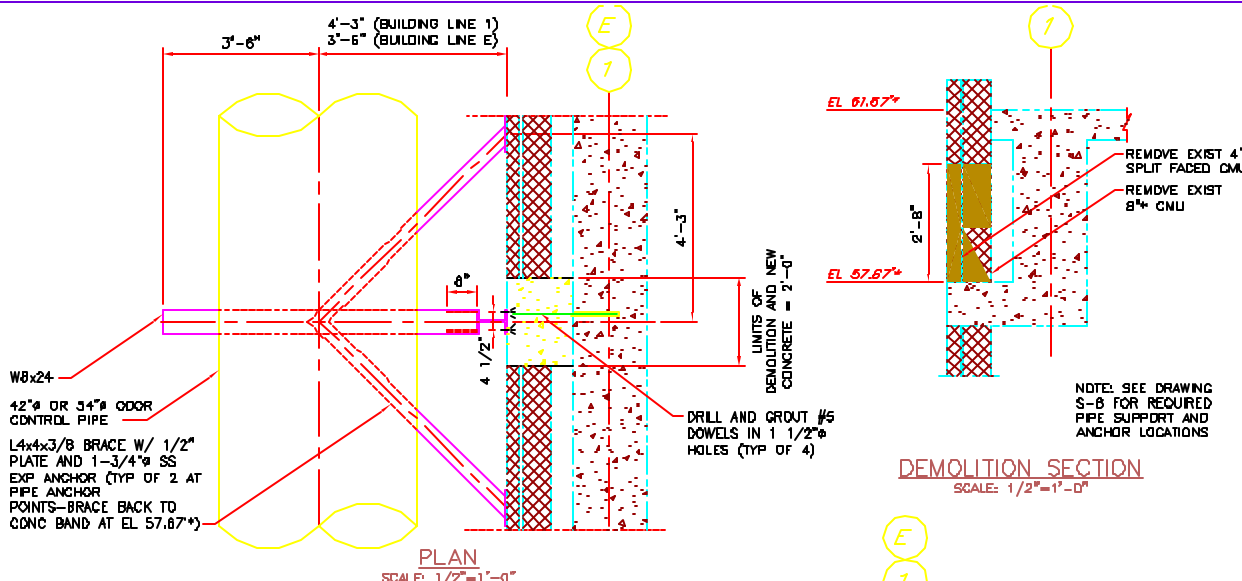


TYPE R



TYPE T



- NOTES:**
- * INDICATES DIMENSIONS AND/OR ELEVATIONS TAKEN FROM THE FOLLOWING RECORD DRAWINGS:
 - A. POLLUTION ABATEMENT FACILITIES - CONTRACT NO. 6 WASTEWATER TREATMENT PLANT, PORTLAND WATER DISTRICT, BY CAMP DRESSER & MCKEE INC., DATED FEBRUARY 1973.
 - B. GRIT REMOVAL AND FLOW SPLITTING FACILITIES UPGRADE, PORTLAND WATER DISTRICT, PORTLAND, MAINE, BY WRIGHT-PIERCE DATED MARCH 2000.
 - GENERAL CONTRACTOR SHALL FIELD VERIFY ALL DIMENSIONS AND ELEVATIONS AND NOTIFY THE ENGINEER OF ANY DISCREPANCIES.
 - (X) INDICATES STRUCTURAL PIPE SUPPORT FRAMING
 - (A) INDICATES PIPE SUPPORT. SEE DRAWING S-3 FOR PIPE SUPPORT TYPES. SEE DRAWINGS S-12 THROUGH S-18 FOR STRUCTURAL PIPE SUPPORT FRAMING DETAILS.
 - ALL STRUCTURAL STEEL AND STEEL BOLTS SHALL BE HOT-DIPPER GALVANIZED.
 - GENERAL CONTRACTOR SHALL COORDINATE THE REQUIRED TOP OF STEEL ELEVATIONS BASED ON THE ODOR CONTROL PIPE ELEVATIONS AND DEPTH OF PIPE SUPPORTS. PROVIDE 1/2" INCH THICK SHIM PLATES AS REQUIRED. SUPPORTS WILL REQUIRE FIELD WELDING TO STRUCTURAL STEEL OR FIELD DRILLING OF BOLT HOLES. ALL DAMAGED GALVANIZED SURFACES DUE TO FIELD WELDING AND BOLTING SHALL BE REPAIRED WITH ZINC TOUCH UP PAINT AS SPECIFIED.
 - FOR GENERAL STRUCTURAL NOTES AND STANDARD DETAILS SEE DRAWINGS S-17, S-18 AND S-19.

PROGRESS PAGES	4-P-01	ISSUED FOR REVIEW	4-P-01	ISSUED FOR BIDDING	4-P-01
	4-P-02		4-P-02		4-P-02
DATE		DATE		DATE	
APPROVED		APPROVED		APPROVED	
DESIGNED		CHECKED		PROJECT	
WRIGHT-PIERCE 58 Main Street Topsham, Maine USA 04086 TEL (207) 725-8721 FAX (207) 729-8414					
PORTLAND WATER DISTRICT PORTLAND, MAINE PRIMARY SEDIMENTATION BASINS UPGRADE WITH ODOR CONTROL FACILITIES PIPE SUPPORTS DETAILS IV					
DWG S-15 24 OF 79					