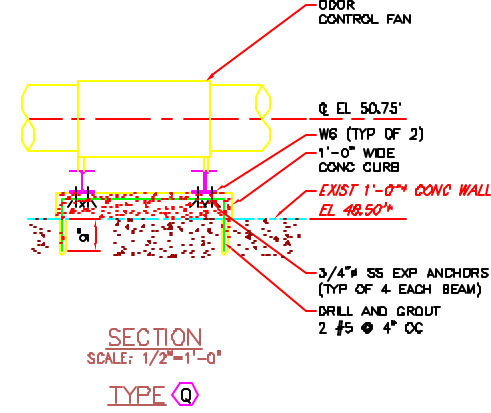
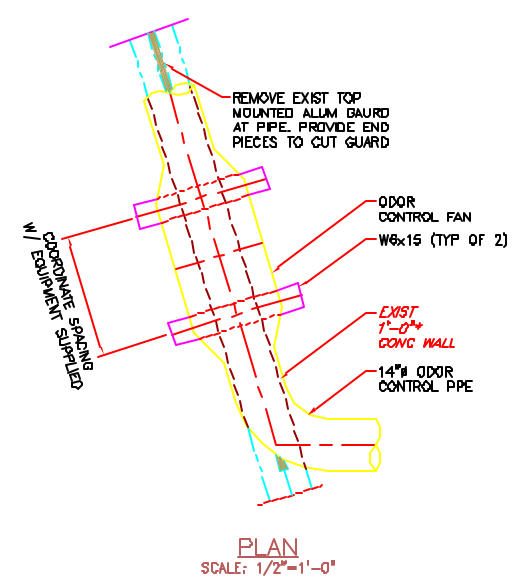
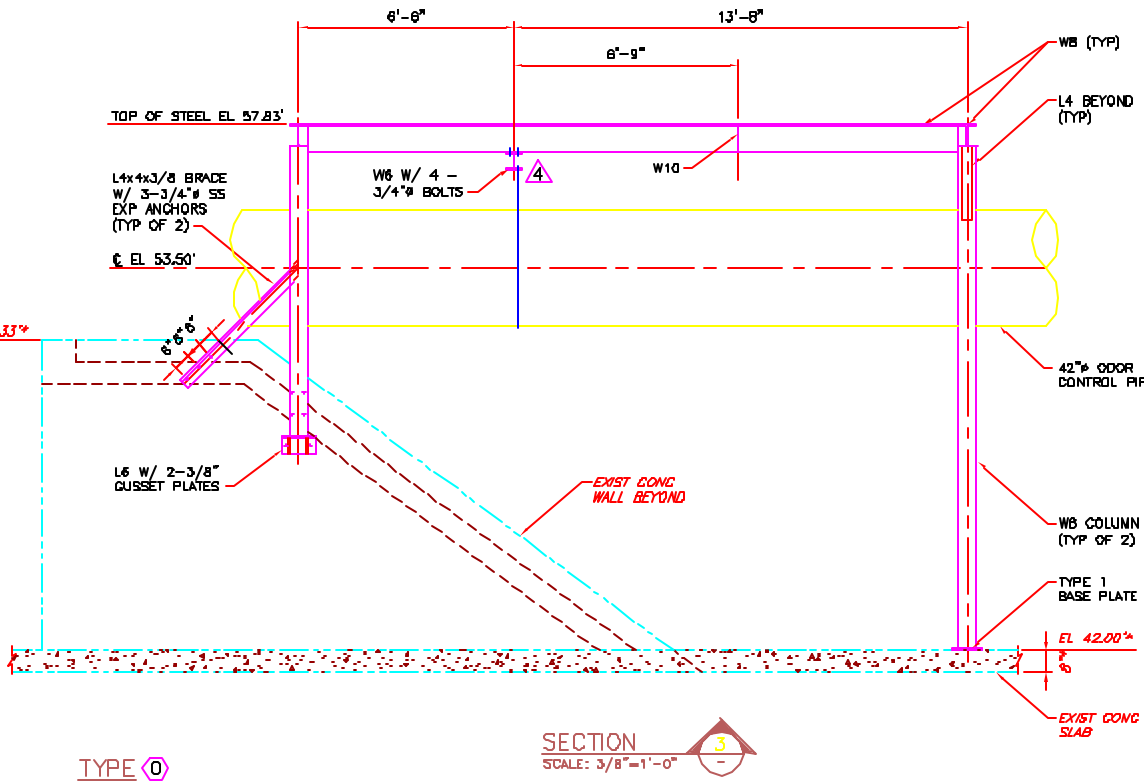
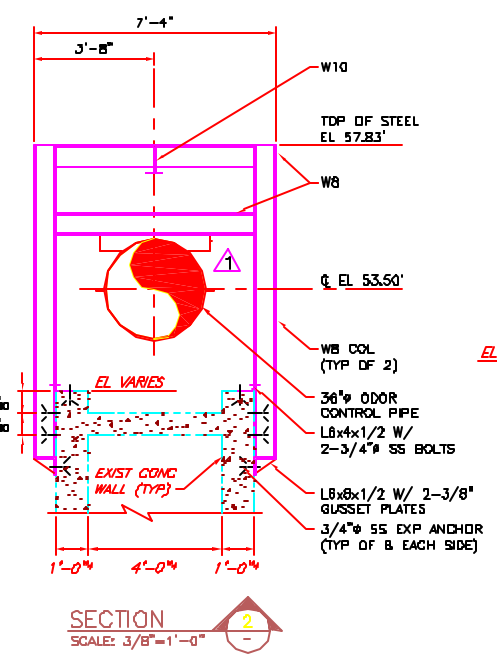
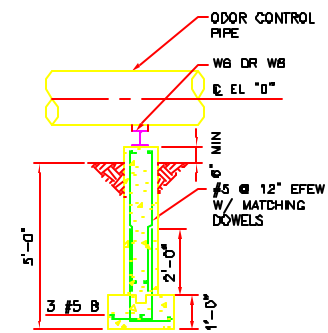


TYPE	PIPE "A"	PIPE "B"	DIM "C"	EL "D"
I	24"	14"	2'-8"	EL 40.08'
J	24"	14"	4'-8"	EL 40.08'
P	14"	18"	3'-8"	EL 44.00'



NOTES:

- * INDICATES DIMENSIONS AND/OR ELEVATIONS TAKEN FROM THE FOLLOWING RECORD DRAWINGS:
 A. POLLUTION ABATEMENT FACILITIES - CONTRACT NO. 6 WASTEWATER TREATMENT PLANT, PORTLAND WATER DISTRICT, E. CAMP DRESSER & MCKEE INC. DATED FEBRUARY 1973.
 B. GRIT REMOVAL AND FLOW SPLITTING FACILITIES UPGRADE, PORTLAND WATER DISTRICT, PORTLAND, MAINE BY WRIGHT-PIERCE DATED MARCH 2000.
 GENERAL CONTRACTOR SHALL FIELD VERIFY ALL DIMENSIONS AND ELEVATIONS AND NOTIFY THE ENGINEER OF ANY DISCREPANCIES.
- INDICATES STRUCTURAL PIPE SUPPORT FRAMING
- INDICATES PIPE SUPPORT. SEE DRAWING S-3 FOR PIPE SUPPORT TYPES. SEE DRAWINGS S-12 THROUGH S-18 FOR STRUCTURAL PIPE SUPPORT FRAMING DETAILS.
- ALL STRUCTURAL STEEL AND STEEL BOLTS SHALL BE HOT-DIPPED GALVANIZED.
- GENERAL CONTRACTOR SHALL COORDINATE THE REQUIRED TOP OF STEEL ELEVATIONS BASED ON THE ODOR CONTROL PIPE ELEVATIONS AND DEPTH OF PIPE SUPPORTS. PROVIDE 1/2 INCH THICK SHIM PLATES AS REQUIRED. SUPPORTS WILL REQUIRE F WELDING TO STRUCTURAL STEEL OR FIELD DRILLING OF BOLT HOLES. ALL DAMAGED GALVANIZED SURFACES DUE TO FIELD WEL AND BDLTG SHALL BE REPAIRED WITH ZINC TOUCH UP PAINT AS SPECIFIED.

PROGRESS PRINTS	ISSUED FOR REVIEW	1-P-01	2-P-01	3-P-01	4-P-01	5-P-01	6-P-01	7-P-01	8-P-01	9-P-01	10-P-01
DATE											
APPROVED											
REVISIONS											
NO.	DESCRIPTION										
1	ISSUED FOR REVIEW										
2	ISSUED FOR REVIEW										
3	ISSUED FOR REVIEW										
4	ISSUED FOR REVIEW										
5	ISSUED FOR REVIEW										
6	ISSUED FOR REVIEW										
7	ISSUED FOR REVIEW										
8	ISSUED FOR REVIEW										
9	ISSUED FOR REVIEW										
10	ISSUED FOR REVIEW										
11	ISSUED FOR REVIEW										
12	ISSUED FOR REVIEW										
13	ISSUED FOR REVIEW										
14	ISSUED FOR REVIEW										
15	ISSUED FOR REVIEW										
16	ISSUED FOR REVIEW										
17	ISSUED FOR REVIEW										
18	ISSUED FOR REVIEW										
19	ISSUED FOR REVIEW										
20	ISSUED FOR REVIEW										
21	ISSUED FOR REVIEW										
22	ISSUED FOR REVIEW										
23	ISSUED FOR REVIEW										
24	ISSUED FOR REVIEW										
25	ISSUED FOR REVIEW										
26	ISSUED FOR REVIEW										
27	ISSUED FOR REVIEW										
28	ISSUED FOR REVIEW										
29	ISSUED FOR REVIEW										
30	ISSUED FOR REVIEW										
31	ISSUED FOR REVIEW										
32	ISSUED FOR REVIEW										
33	ISSUED FOR REVIEW										
34	ISSUED FOR REVIEW										
35	ISSUED FOR REVIEW										
36	ISSUED FOR REVIEW										
37	ISSUED FOR REVIEW										
38	ISSUED FOR REVIEW										
39	ISSUED FOR REVIEW										
40	ISSUED FOR REVIEW										
41	ISSUED FOR REVIEW										
42	ISSUED FOR REVIEW										
43	ISSUED FOR REVIEW										
44	ISSUED FOR REVIEW										
45	ISSUED FOR REVIEW										
46	ISSUED FOR REVIEW										
47	ISSUED FOR REVIEW										
48	ISSUED FOR REVIEW										
49	ISSUED FOR REVIEW										
50	ISSUED FOR REVIEW										
51	ISSUED FOR REVIEW										
52	ISSUED FOR REVIEW										
53	ISSUED FOR REVIEW										
54	ISSUED FOR REVIEW										
55	ISSUED FOR REVIEW										
56	ISSUED FOR REVIEW										
57	ISSUED FOR REVIEW										
58	ISSUED FOR REVIEW										
59	ISSUED FOR REVIEW										
60	ISSUED FOR REVIEW										
61	ISSUED FOR REVIEW										
62	ISSUED FOR REVIEW										
63	ISSUED FOR REVIEW										
64	ISSUED FOR REVIEW										
65	ISSUED FOR REVIEW										
66	ISSUED FOR REVIEW										
67	ISSUED FOR REVIEW										
68	ISSUED FOR REVIEW										
69	ISSUED FOR REVIEW										
70	ISSUED FOR REVIEW										
71	ISSUED FOR REVIEW										
72	ISSUED FOR REVIEW										
73	ISSUED FOR REVIEW										
74	ISSUED FOR REVIEW										
75	ISSUED FOR REVIEW										
76	ISSUED FOR REVIEW										
77	ISSUED FOR REVIEW										
78	ISSUED FOR REVIEW										
79	ISSUED FOR REVIEW										
80	ISSUED FOR REVIEW										
81	ISSUED FOR REVIEW										
82	ISSUED FOR REVIEW										
83	ISSUED FOR REVIEW										
84	ISSUED FOR REVIEW										
85	ISSUED FOR REVIEW										
86	ISSUED FOR REVIEW										
87	ISSUED FOR REVIEW										
88	ISSUED FOR REVIEW										
89	ISSUED FOR REVIEW										
90	ISSUED FOR REVIEW										
91	ISSUED FOR REVIEW										
92	ISSUED FOR REVIEW										
93	ISSUED FOR REVIEW										
94	ISSUED FOR REVIEW										
95	ISSUED FOR REVIEW										
96	ISSUED FOR REVIEW										
97	ISSUED FOR REVIEW										
98	ISSUED FOR REVIEW										
99	ISSUED FOR REVIEW										
100	ISSUED FOR REVIEW										

DRAWN BY: JCS
 CHECKED BY: WLF/PFB
 DATE: 5-4-01
 APPROVED BY: JCS
 DATE: 5-4-01
 PROJ. NO.: 2063A
 PROJECT: PORTLAND WATER DISTRICT
 SCALE: AS SHOWN

Wright-Pierce
 58 Main Street
 Topsham, Maine USA 04086
 TEL (207) 725-4721 FAX (207) 729-8414

PORTLAND WATER DISTRICT
 PORTLAND, MAINE
 PRIMARY SEDIMENTATION BASINS
 UPGRADE WITH ODOR CONTROL FACILITIES
 PIPE SUPPORTS
 DETAILS III

DWG S-14
23 OF 79