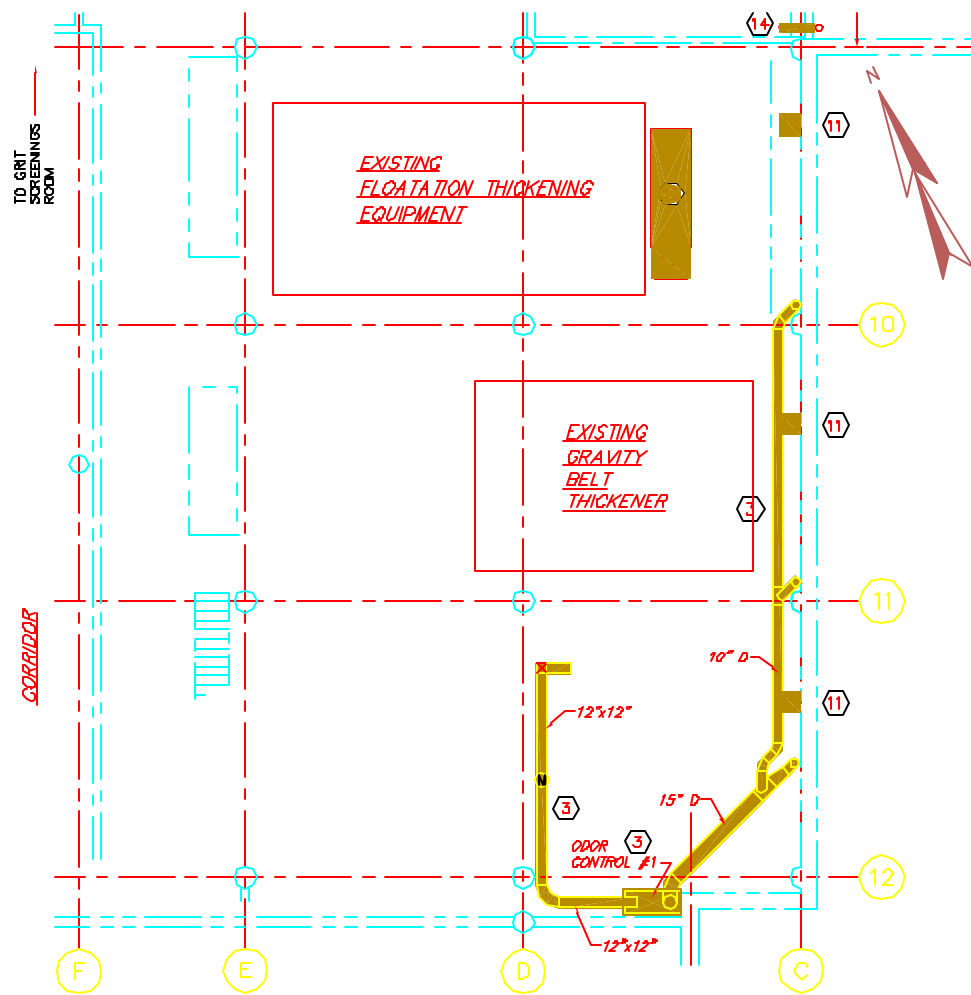
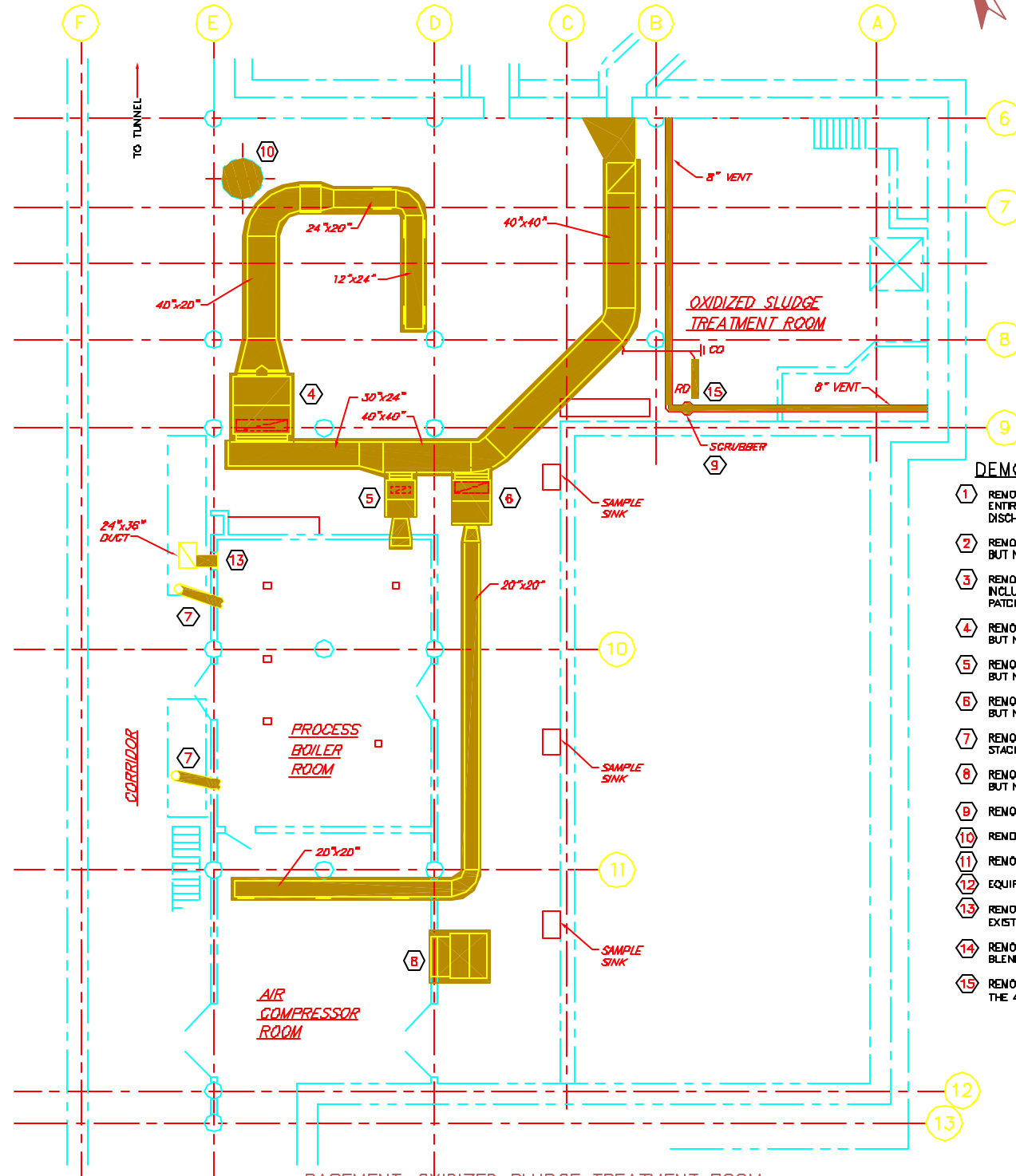


GRIT AND SCREENINGS ROOM
MECHANICAL EQUIPMENT DEMOLITION
1/8" = 1'-0"



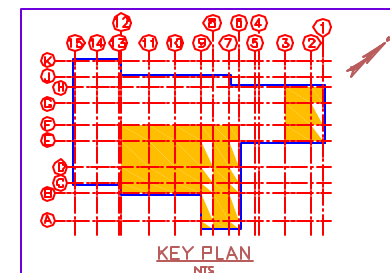
SLUDGE THICKENING ROOM
MECHANICAL EQUIPMENT DEMOLITION
1/8" = 1'-0"



BASEMENT-OXIDIZED SLUDGE TREATMENT ROOM
MECHANICAL EQUIPMENT DEMOLITION
1/8" = 1'-0"

DEMOLITION NOTES:

- 1 REMOVE/DEMOLISH PURIFILL ODOR CONTROL UNITS IN THEIR ENTIRETY, INCLUDING BUT NOT LIMITED TO ASSOCIATED DUCTWORK, DISCHARGE PLENUM AND IN-LINE FANS.
- 2 REMOVE/DEMOLISH AIR HANDLING UNIT IN ITS ENTIRETY, INCLUDING BUT NOT LIMITED TO ASSOCIATED INTAKE AIR DUCTWORK, LOUVER TO REMAIN.
- 3 REMOVE/DEMOLISH PURIFILL ODOR CONTROL UNIT IN ITS ENTIRETY, INCLUDING BUT NOT LIMITED TO ASSOCIATED DUCTWORK AND IN-LINE FAN. PATCH HOLE IN IN-LINE FAN DISCHARGE PLENUM.
- 4 REMOVE/DEMOLISH AIR HANDLING UNIT IN ITS ENTIRETY, INCLUDING BUT NOT LIMITED TO ASSOCIATED INTAKE AND DISCHARGE DUCTWORK.
- 5 REMOVE/DEMOLISH EXISTING AIR HANDLING UNIT IN THEIR ENTIRETY, INCLUDING BUT NOT LIMITED TO ASSOCIATED INTAKE AND DISCHARGE DUCTWORK.
- 6 REMOVE/DEMOLISH EXISTING AIR HANDLING UNIT IN ITS ENTIRETY, INCLUDING BUT NOT LIMITED TO ASSOCIATED INTAKE AND DISCHARGE DUCTWORK.
- 7 REMOVE/DEMOLISH CHIMNEY BREACH UP TO THE VERTICAL FREESTANDING STACK.
- 8 REMOVE/DEMOLISH EXISTING AIR HANDLING UNIT IN ITS ENTIRETY, INCLUDING BUT NOT LIMITED TO ASSOCIATED INTAKE AND DISCHARGE DUCTWORK.
- 9 REMOVE/DEMOLISH EXISTING SCRUBBER AND ASSOCIATED PIPING IN ITS ENTIRETY.
- 10 REMOVE/DEMOLISH CIRCULAR STAIRS IN ITS ENTIRETY. SEE SPEC SECTION 02080A.
- 11 REMOVE/DEMOLISH SUPPLY AIR FAN AND ASSOCIATED DUCTWORK IN ITS ENTIRETY.
- 12 EQUIPMENT ACCESS PLATFORM TO BE RELOCATED.
- 13 REMOVE/DEMOLISH DUCTWORK AND 16"x48" GRILLE. PATCH HOLE IN EXISTING 24"x36" DUCT.
- 14 REMOVE SECTION OF 4" VENT PIPE AS REQUIRED FOR THE DEMOLITION OF THE BLENDING TANK PLATFORM.
- 15 REMOVE/DEMOLISH ROOF DRAIN AND ASSOCIATED PIPING TO THE Y BRANCH AT THE 4" MAIN. CAP OFF Y-BRANCH.



KEY PLAN
NTS

NO.	REVISIONS	DATE	BY	CHKD.	APP'D.	DATE
1						
2						
3						
4						
5						
6						
7						
8						
9						
10						
11						
12						
13						
14						
15						

DRAWN BY: JLD CHECKED BY: JLD DATE: 3-14-01 APPROVED BY: JLD DATE: 3-14-01 BOOK NO.: 27051A PROJECT NO.: 27051A SCALE: 1/8" = 1'-0"	PROCESS PRINTS ISSUED FOR REVIEW: 4-4-01 ISSUED FOR BIDDING: 3-4-01 TALET LOCATION: 27051A DATE: 3-14-01 FILENAME:
--	---

Wright-Pierce 99 Main Street Topsham, Maine USA 04086 TEL (207) 725-8721 FAX (207) 725-8414	PORTLAND WATER DISTRICT PORTLAND, MAINE PRIMARY SEDIMENTATION BASINS UPGRADE WITH ODOR CONTROL FACILITIES EXISTING PROCESS BUILDING DEMOLITION PLANS
--	---

DWG M-5
54 OF 79