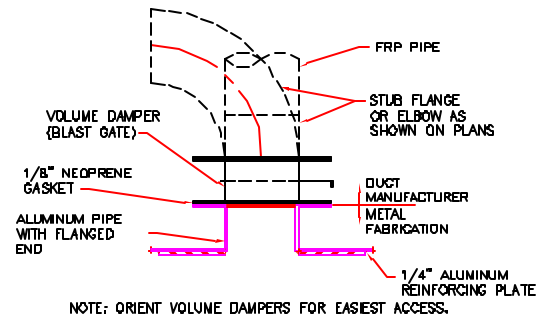
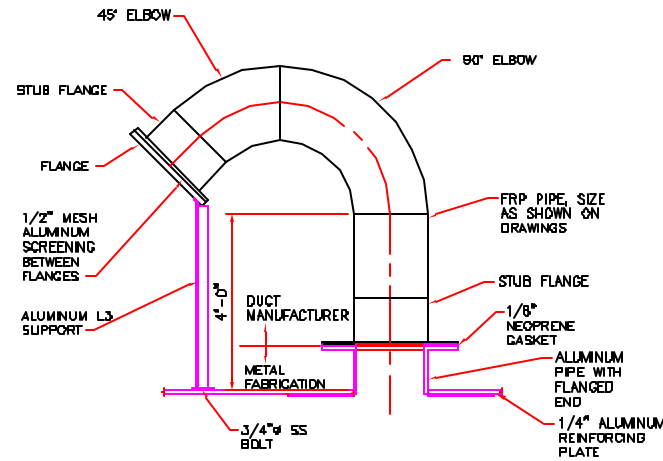


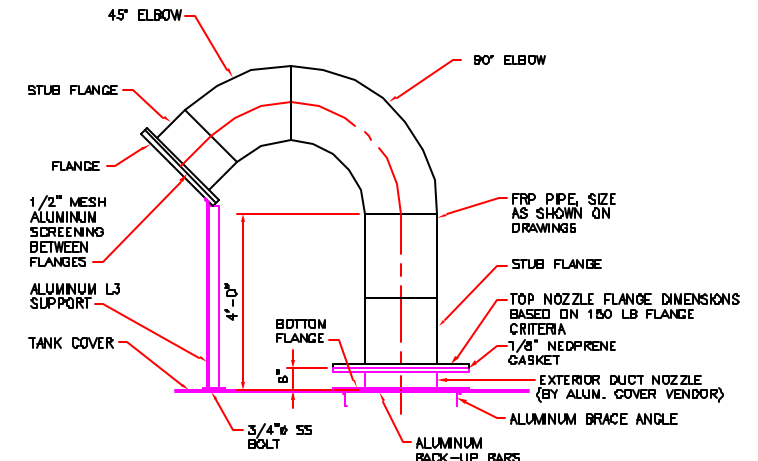
DETAIL A
SCALE: NTS
NOTE: REQUIRED FOR EACH AIR FLOW PROBE



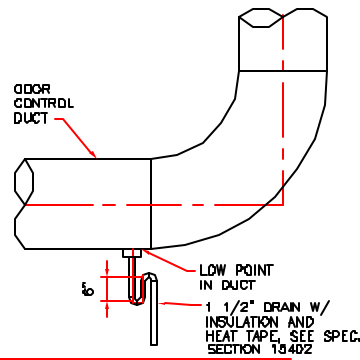
DETAIL B
SCALE: NTS
NOTE: ORIENT VOLUME DAMPERS FOR EASIEST ACCESS.



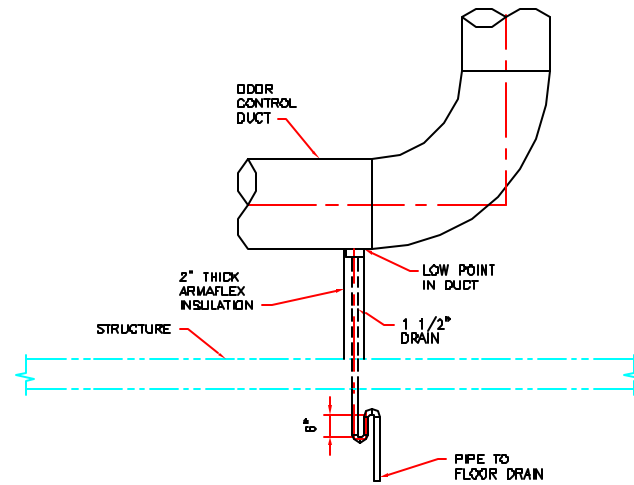
DETAIL C
SCALE: NTS



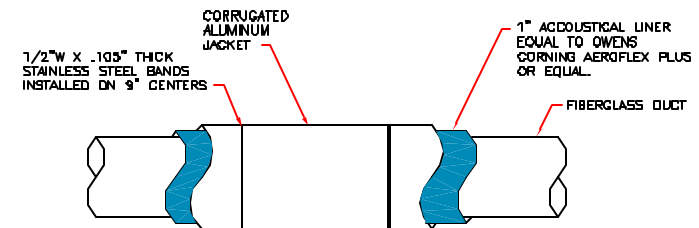
DETAIL D
SCALE: NTS



DETAIL E
SCALE: 1/2"=1'-0"

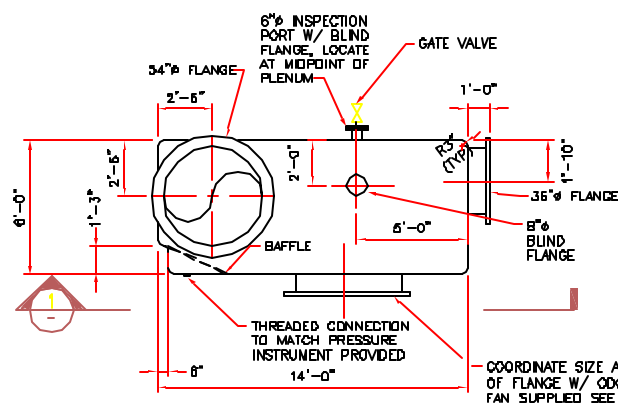


DETAIL F
SCALE: 1/2"=1'-0"



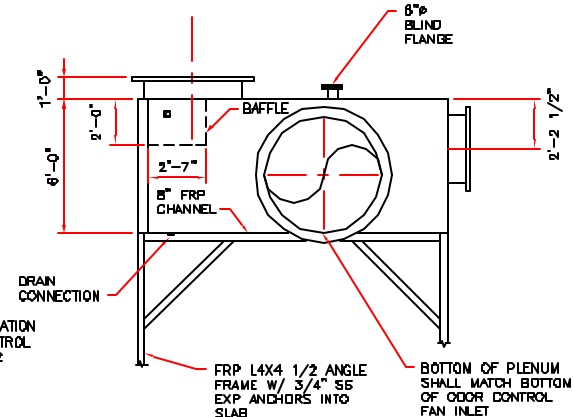
DUCT INSULATION DETAIL
1/2"=1'-0"

NOTE: METAL COVERING SHALL BE A 0.016" THICK CORRUGATED ALUMINUM JACKET. ALUMINUM SHALL BE TYPE 3003 OR 5005, ASTM B209, TEMPER H14. EXTERIOR SHALL HAVE A FACTORY APPLIED BAKED-ON ACRYLIC COATING, COLOR TO MATCH FRP PIPE COLOR. THE INSIDE OF THE COVERING SHALL HAVE A FACTORY APPLIED MOISTURE BARRIER OF POLYETHYLENE FILM ON KRAFT PAPER. COVERING SHALL BE AS MANUFACTURED BY CHILDERS, INSUL-CAUSTIC, OR EQUAL.

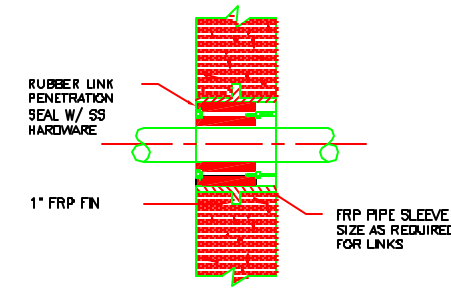


NOTES:
1. PLENUM TO BE FIBERGLASS WITH 20 MIL LINER THAT MATCHES THE FRP PIPE LINER. THE PLENUM SHALL BE PROVIDED BY THE DUCT MANUFACTURER AT THE SAME PRESSURE RATING AS THE DUCT.
2. PROVIDE A BLIND FLANGE FOR THIS OPENING. DELIVER TO PLANT FOR STORAGE WITH REQUIRED HARDWARE FOR INSTALLATION.

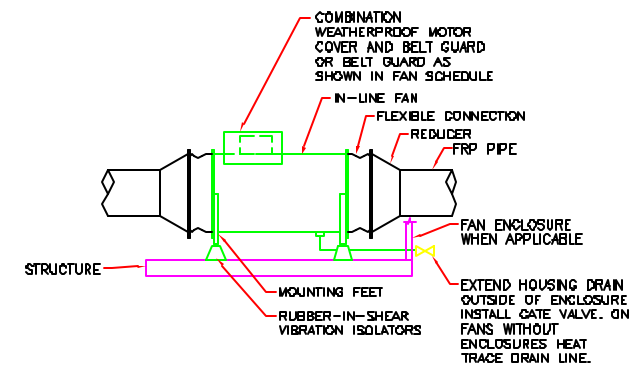
ODOR CONTROL PLENUM DETAIL
1/4"=1'-0"



SECTION 1
SCALE: 1/4"=1'-0"



DUCT SLEEVE DETAIL
NTS



IN-LINE FAN INSTALLATION DETAIL
1/2"=1'-0"

NO.	REVISIONS	DATE	BY	CHKD.	APP'D.	PROCESS PRINTS
1						4-4-01
2						3-4-01
3						
4						
5						
6						
7						
8						
9						
10						
11						
12						
13						
14						
15						
16						
17						
18						
19						
20						

DRAWN BY: JML	CHECKED BY: JML	DATE: 3-24-01
APPROVED BY: JML	DATE: 3-24-01	BOOK NO. 2035A
PROJECT NO. 2035A	SCALE: NTS	

Wright-Pierce	99 Main Street Topsham, Maine USA 04086 TEL (207) 725-8721 FAX (207) 725-8414
---------------	---

PORTLAND WATER DISTRICT PORTLAND, MAINE PRIMARY SEDIMENTATION BASINS UPGRADE WITH ODOR CONTROL FACILITIES	DETAILS
--	---------

DWG M-4	53 OF 79
---------	----------