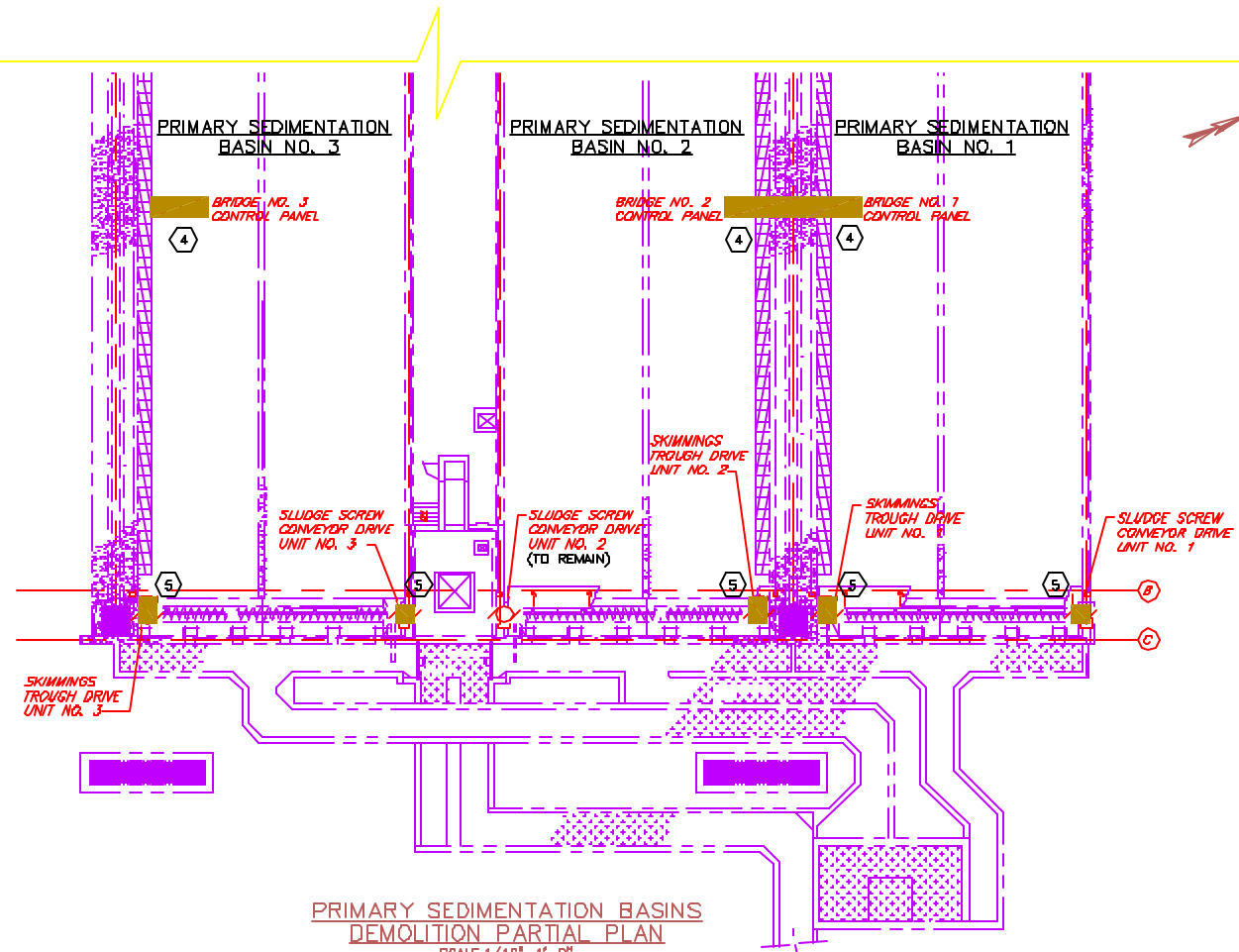
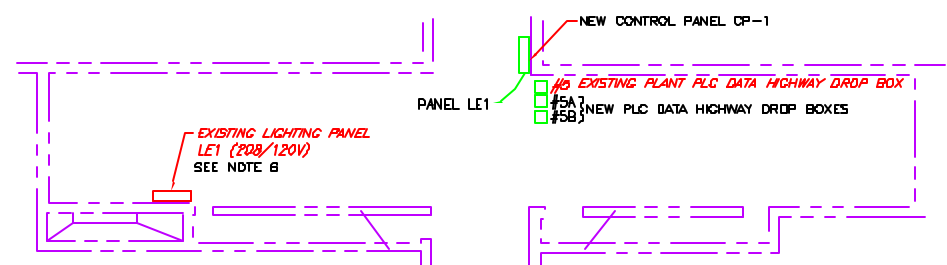


PUMP GALLERY
DEMOLITION PARTIAL PLAN
SCALE: 1/8" = 1'-0"

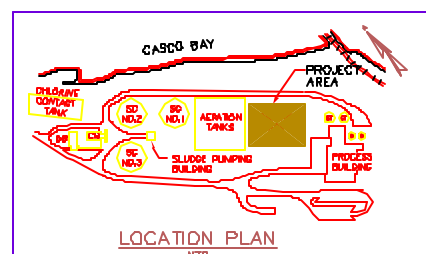
- NOTES:**
1. FOR LEGEND AND GENERAL NOTES, SEE DRAWING E-1.
 2. EQUIPMENT INDICATED WITH SHADING SHALL BE DISCONNECTED AND REMOVED, ALONG WITH ALL ASSOCIATED DEVICES, WIRING, AND EXPOSED CONDUITS.
 3. DISCONNECT AND REMOVE FOUR (4) PRIMARY SKIMMING PUMPS AS INDICATED. REFER TO DRAWING E-3 FOR ADDITIONAL DETAILS.
 4. DISCONNECT AND REMOVE WIRING TO THREE (3) PRIMARY BASIN BRIDGES AS INDICATED. REFER TO DRAWING E-3 FOR ADDITIONAL DETAILS.
 5. DISCONNECT AND REMOVE THREE (3) SKIMMING TROUGH DRIVE UNITS AND TWO (2) SLUDGE SCREW CONVEYOR DRIVE UNITS, AS INDICATED. REFER TO DRAWING E-3 FOR ADDITIONAL DETAILS.
 6. EXISTING C.E. NLAB PANELBOARD LE1. PROVIDE FOUR (4) NEW 20 AMP 1 POLE CIRCUIT BREAKERS IN PANELBOARD. REMOVE 2 EXISTING 2 POLE CIRCUIT BREAKERS (TEMPORARY POWER C/B'S) TO ALLOW SPACE FOR NEW CIRCUIT BREAKERS. NEW C/B'S SHALL FEED THE FOLLOWING LOADS:
CONTROL PANEL CP-1, DRAWING E-5
FLIGHT MONITORING PANEL, DRAWING E-6
PLANT WATER HEAT TRACE, DRAWING E-8
CONDENSATE DRAIN HEAT TRACE (4), DRAWING E-2



PRIMARY SEDIMENTATION BASINS
DEMOLITION PARTIAL PLAN
SCALE: 1/16" = 1'-0"



PUMP GALLERY PARTIAL PLAN
SCALE: 1/16" = 1'-0"



LOCATION PLAN
NTB

NO.	REVISIONS	DATE	BY	DESCRIPTION
1				
2				
3				
4				
5				
6				
7				
8				
9				
10				
11				
12				
13				
14				
15				
16				
17				
18				
19				
20				
21				
22				
23				
24				
25				
26				
27				
28				
29				
30				
31				
32				
33				
34				
35				
36				
37				
38				
39				
40				
41				
42				
43				
44				
45				
46				
47				
48				
49				
50				
51				
52				
53				
54				
55				
56				
57				
58				
59				
60				
61				
62				
63				
64				
65				
66				
67				
68				
69				
70				
71				
72				
73				
74				
75				
76				
77				
78				
79				
80				
81				
82				
83				
84				
85				
86				
87				
88				
89				
90				
91				
92				
93				
94				
95				
96				
97				
98				
99				
100				

Wright-Pierce
99 Main Street, Topsham, Maine USA 04086
TEL (207) 725-8721 FAX (207) 725-8414

PORTLAND WATER DISTRICT
PORTLAND, MAINE
PRIMARY SEDIMENTATION BASINS
UPGRADE WITH ODOR CONTROL FACILITIES
AND PUMP GALLERY
DEMOLITION AND MODIFICATIONS
DWG E-5
68 OF 79