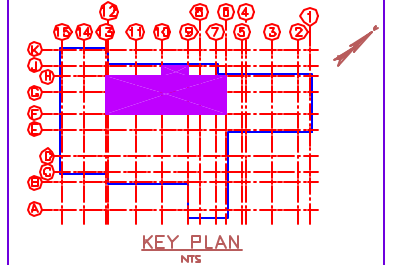
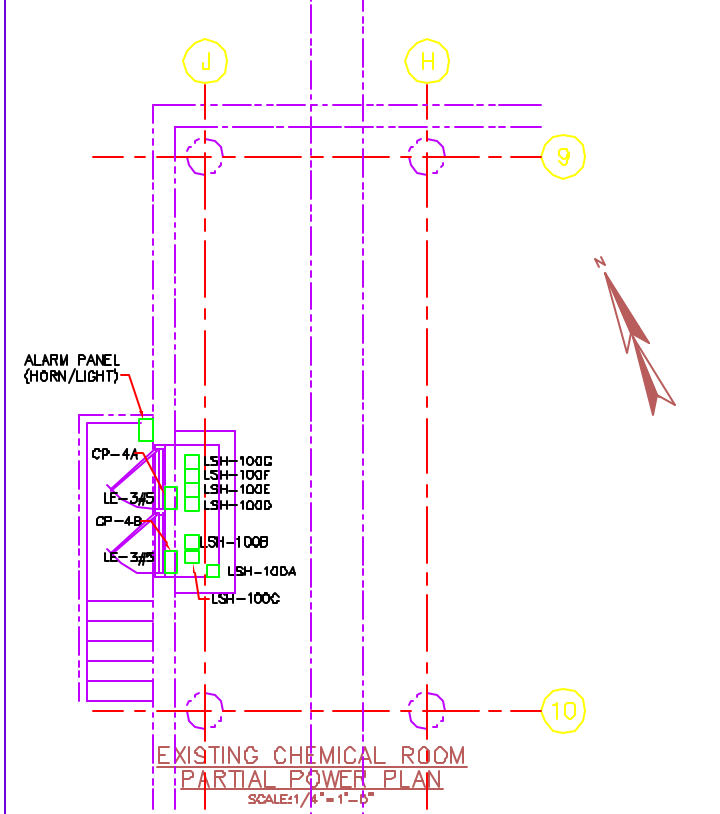


- 1. FOR LEGEND AND GENERAL NOTES, SEE DRAWING E-1.
- 2. REFER TO DRAWING E-14 FOR PANELBOARD SCHEDULE.
- 3. ELECTRICAL CONTRACTOR SHALL CONNECT NEW SPRINKLER SYSTEM FLOW SWITCH TO SPARE ZONE IN EXISTING FIRE ALARM CONTROL PANEL. AN ALARM SHALL BE GENERATED UPON SPRINKLER FLOW. PROVIDE ANY REQUIRED ZONE CARDS OR OTHER APPURTENANCES IN FIRE ALARM CONTROL PANEL TO ACCOMPLISH THE ABOVE. IN ADDITION, THE CHEMICAL ROOM VENTILATION EQUIPMENT SHALL BE SHUT DOWN UPON SPRINKLER FLOW. PROVIDE AUXILIARY RELAY IN FIRE ALARM CONTROL PANEL AND CONNECT TO ATC-3 PANEL. FIRE ALARM WIRING SHALL BE NO. 14 AWG WIRING IN 1/2 INCH CONDUIT.



NO.	REVISIONS	DATE	BY	CHECKED	PROCESS POINTS
					ISSUED FOR REVIEW
					ISSUED FOR BIDDING
					3-4-01
					SCALE
					DATE
					SCALE
					SCALE

DRAWN BY	DATE	APPROVED BY	BOOK NO.	SCALE
CHECKED BY	3-1-01	JUL	7053A	AS NOTED
PROJECT NO.	7053A	TOPSHEM, MAINE USA		
SCALE				

PORTLAND WATER DISTRICT
PORTLAND, MAINE
PRIMARY SEDIMENTATION BASINS
UPGRADE WITH ODOR CONTROL FACILITIES
EXISTING PROCESS BUILDING
BASEMENT PARTIAL POWER PLANS

Wright-Pierce
99 Main Street, Topsham, Maine USA 04086
TEL (207) 725-8721 FAX (207) 725-8444

DWG E-13
76 OF 79