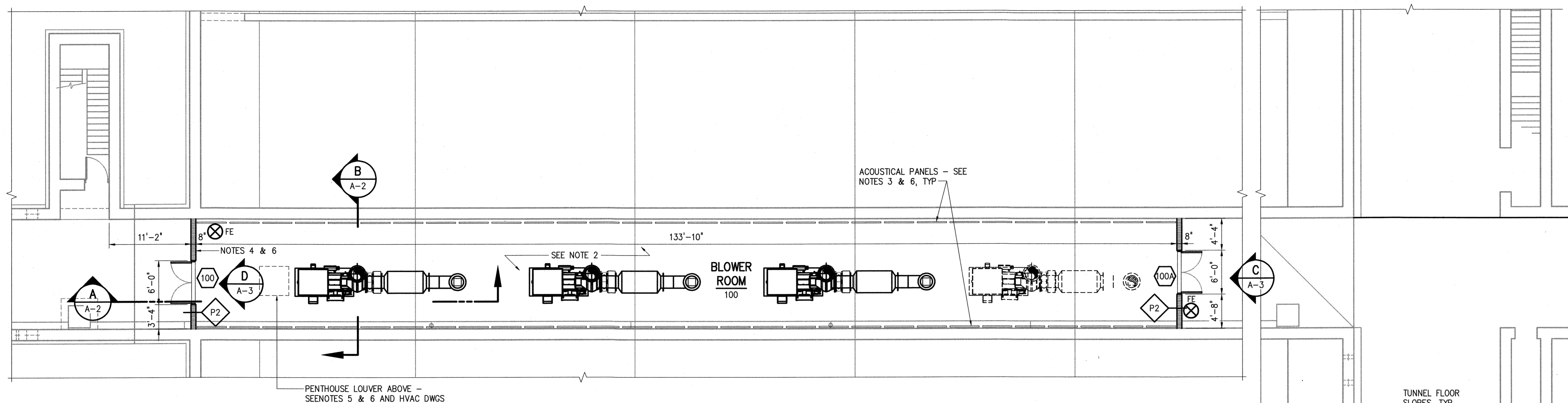
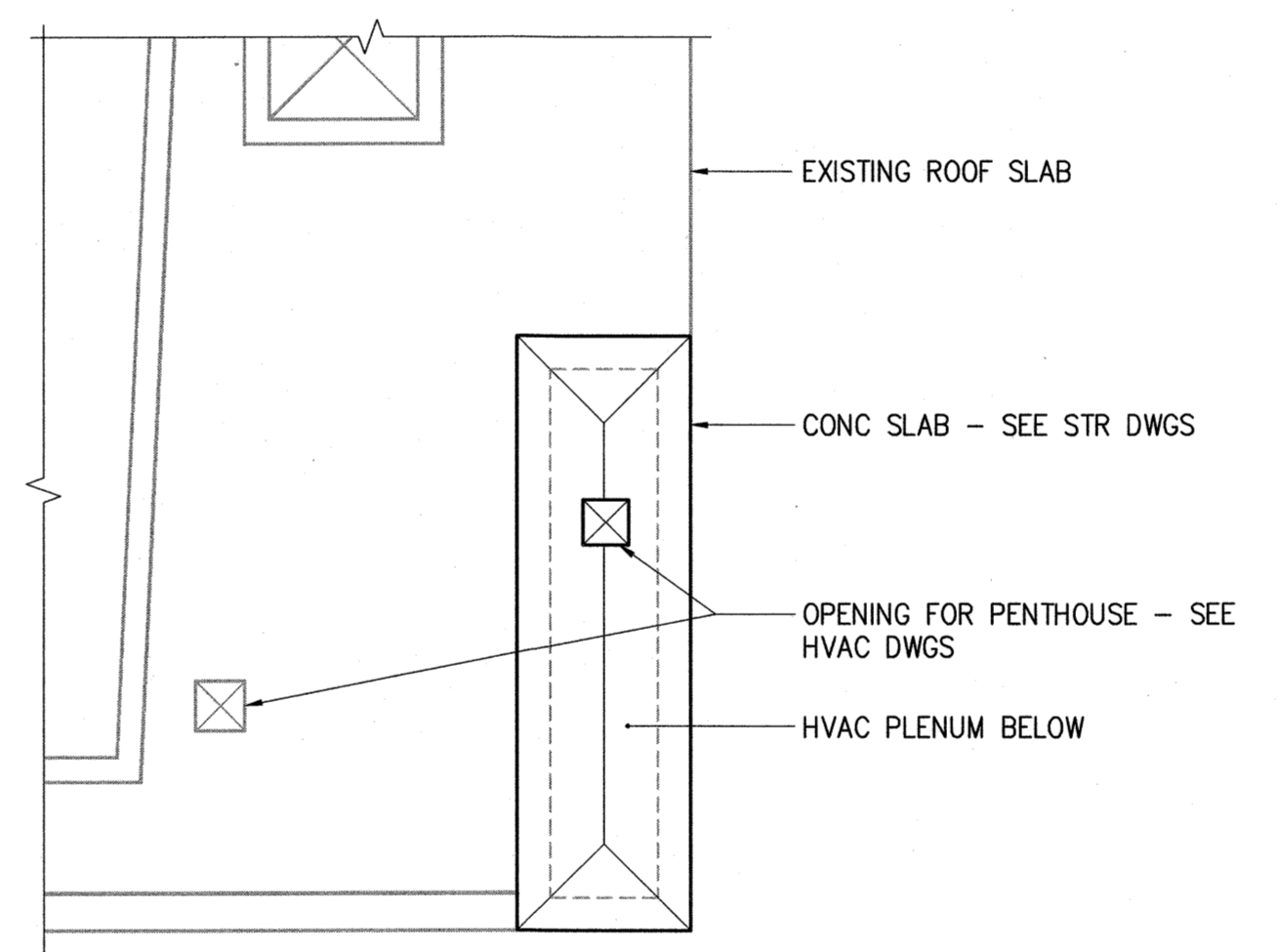


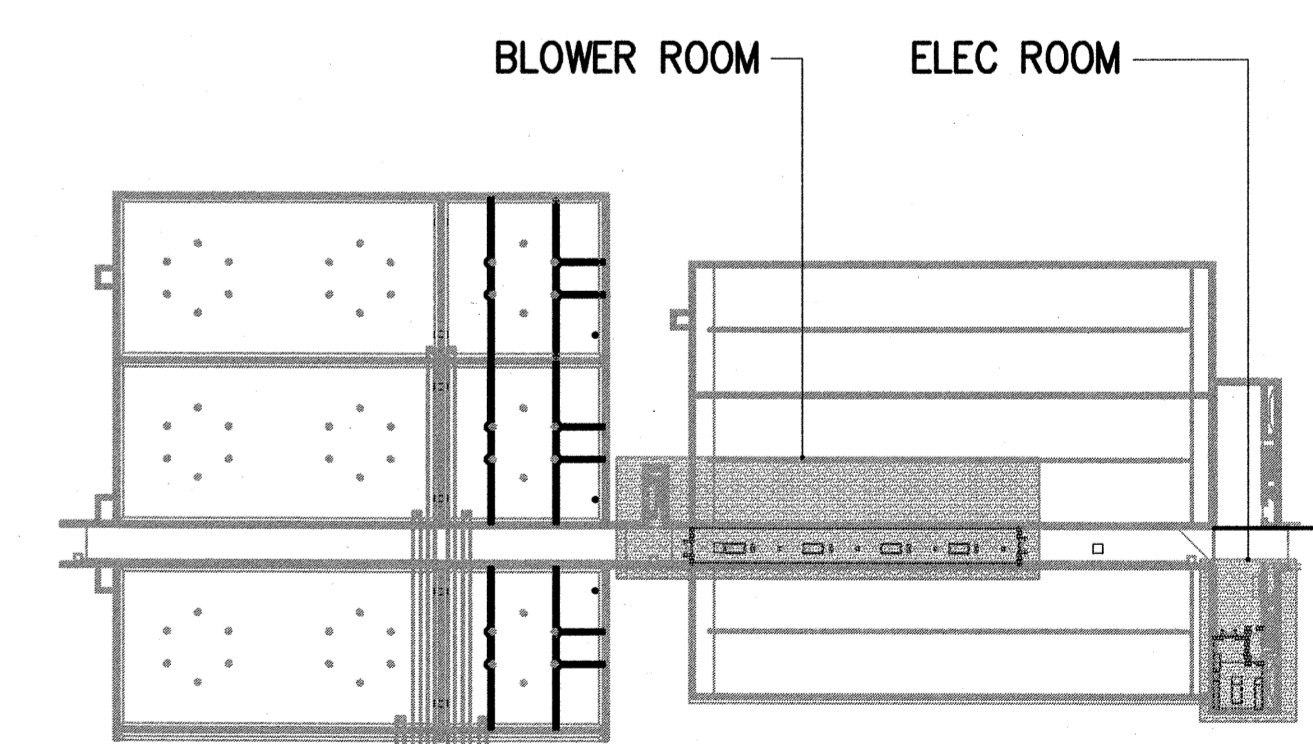
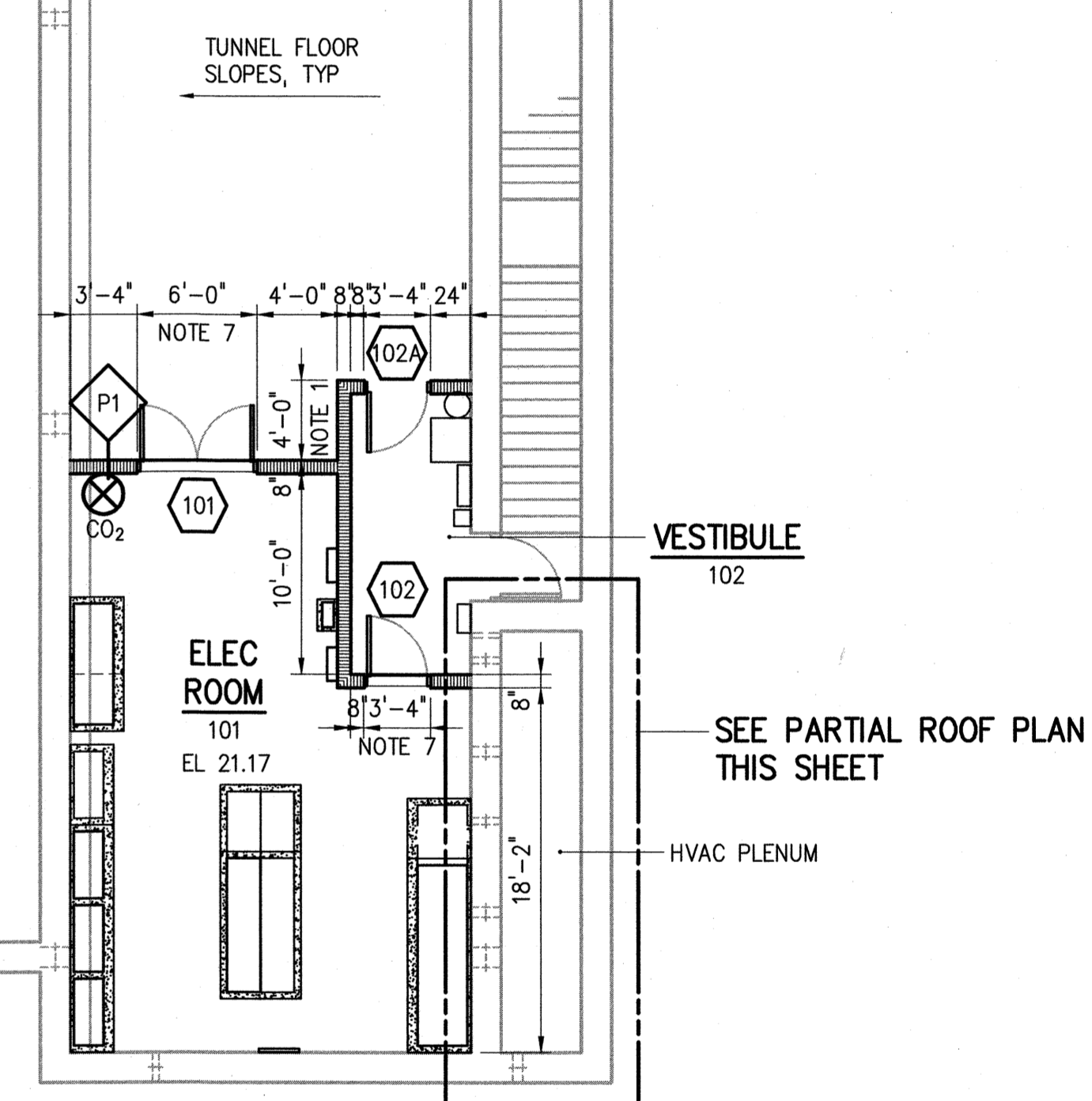
20150519 4:59P C:\90216-000\ARCH\A-1.dwg LAST SAVED By: abelo
 IMAGE# C:\90216-000\300-AT-VT-LP-SK C:\90216-000\300-AT-VT-LP-M C:\90216-000\300-AT-VT-LP-H C:\90216-000\300-AT-VT-LP-H C:\90216-000\300-AT-VT-LP-H C:\90216-000\300-AT-VT-LP-H
 PLOT DATE: May 19, 2015 4:59pm By: ABLAHA



PARTIAL BOTTOM PLAN
1/8" = 1'-0"



PARTIAL ROOF PLAN
1/8" = 1'-0"



CODE SUMMARY:

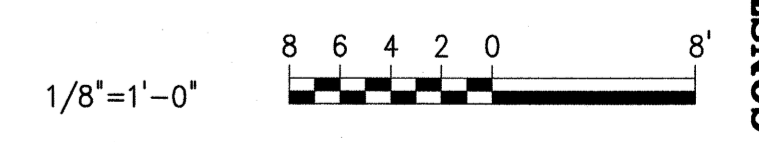
BUILDING CODE: MUBC (MAINE UNIFORM BUILDING CODE)	2009 INTERNATIONAL BUILDING CODE (IBC) 2009 INTERNATIONAL EXISTING BUILDING CODE (IEBC) 62.1 - 2007 (VENTILATION FOR ACCEPTABLE INDOOR AIR QUALITY) NFPA 54 NATIONAL FUEL GAS CODE MAINE STATE PLUMBING CODE NFPA #1
BUILDING CODE: MUEC (MAINE UNIFORM ENERGY CODE)	2009 INTERNATIONAL ENERGY CONSERVATION CODE
USE GROUP:	F-2 (EXISTING)
CONSTRUCTION TYPE:	IIB
EXISTING AREA (BASEMENT):	EXISTING
EXISTING AREA (1ST FLOOR):	EXISTING
EXISTING AREA (2ND FLOOR):	EXISTING
EXISTING AREA (3RD FLOOR):	EXISTING
TOTAL GROSS AREA:	EXISTING
BUILDING HEIGHT:	EXISTING
OCCUPANCY LOAD:	EXISTING
EXITS PROVIDED:	(ALL EXISTING EXITS TO REMAIN)
FIRE SEPARATIONS:	EXISTING

NOTES:

- LENGTH OF WALL MAY VARY TO AVOID EXISTING OBSTRUCTIONS. COORDINATE FINAL LENGTH WITH FIELD ENGINEER.
- PROVIDE A TOTAL OF SIXTEEN (16) 2' X 4' X 2" THICK SOUND Baffles ATTACHED TO CEILING OF TUNNEL IN BLOWER ROOM. SOUND PANELS SHALL BE FIELD LOCATED (FOUR PER BLOWER) BY FIELD ENGINEER. INSTALLATION TO BE COMPETED IN ACCORDANCE WITH MANUFACTURER SPECIFICATIONS. OWNER SHALL SELECT COLOR FROM MANUFACTURERS FULL RANGE OF COLORS. BASIS OF DESIGN ARE ALPHASORB FABRIC WRAPPED SOUND Baffles AS MANUFACTURED BY ACOUSTICAL SOLUTIONS OR APPROVED EQUAL.
- PROVIDE A TOTAL OF SIXTY (60) 4' X 8' X 2" THICK ACOUSTIC PANELS ON NORTH AND SOUTH WALL OF BLOWER ROOM. PANELS SHALL BE ATTACHED WITH Z-CLIP FASTENERS. PROVIDE OVERSIZED FASTENERS ON SOUTH WALL AS NEED TO LOCATE PANELS IN FRONT OF CONDUITS. SPACING AND LOCATION OF THE PANELS WILL BE DETERMINED IN THE FIELD. CONTRACTOR TO PROVIDE LAYOUT DRAWING FOR APPROVAL PRIOR TO INSTALLATION. ACOUSTIC PANEL MANUFACTURER IS RESPONSIBLE FOR THE DESIGN OF THE PANEL SUPPORTS.
- PROVIDE A 2" THICK ACOUSTIC PANEL (REMOVABLE) AT ACOUSTIC LOUVER ON NORTH WALL OF BLOWER ROOM. SIZE SHALL MATCH SIZE OF ACOUSTICAL PANEL SHALL MATCH SIZE OF LOUVER.
- PROVIDE A 2" THICK ACOUSTIC PANEL AT THE UNDERSIDE OF PENTHOUSE LOUVER ON WEST END OF BLOWER ROOM. SEE SECTION A/A-2. SIZE OF ACOUSTIC PANEL SHALL MATCH THE SIZE OF PENTHOUSE LOUVER.
- INSTALLATION TO BE COMPETED IN ACCORDANCE WITH MANUFACTURER SPECIFICATIONS. OWNER SHALL SELECT COLOR FROM MANUFACTURERS FULL RANGE OF COLORS. BASIS OF DESIGN ARE ALPHASORB ACOUSTIC PANELS AS MANUFACTURED BY ACOUSTICAL SOLUTIONS OR APPROVED EQUAL.
- STEP DOWN AT DOORWAY (7" MAX). PAINT THE STEP AND FLOOR 12" INTO ELECTRICAL ROOM 101 SAFETY YELLOW. PROVIDE SIGNAGE TO DOORS 101 AND 102 THAT READ "STEP DOWN" SEE SPECIFICATION SECTION 10200.

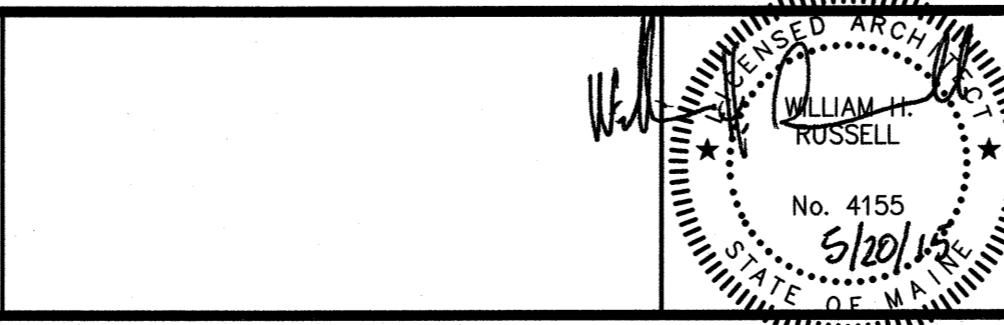
LEGEND:

- 100 DOOR NUMBER - SEE DRAWING NO. A-3
- FE FIRE EXTINGUISHER - DRY CHEMICAL
- CO2 FIRE EXTINGUISHER - CARBON DIOXIDE
- P1 PARTITION TYPE - SEE DRAWING NO. A-3



DESIGNED	DAW		
DRAWN	ALB		
CHECKED	DAW		
PROJ. ENGR.	BIL		
NO.	DATE	CONSTRUCTION ISSUED FOR	BY
1	MAY 2015	CONSTRUCTION	BIL

HAZEN AND SAWYER
 Environmental Engineers & Scientists
 HAZEN AND SAWYER, P.C.
 24 FEDERAL STREET 5TH FLOOR - BOSTON, MA 02110



PORTLAND WATER DISTRICT
 PORTLAND, MAINE
EAST END WASTEWATER TREATMENT FACILITY
 AERATION UPGRADE

PRIMARY TANK TUNNEL AND GALLERY
 ARCHITECTURAL
PARTIAL PLAN

DATE	MAY 2015
DWG. NO.:	A-1
SHEET NO.:	12
FILE NAME:	A-1

CONSTRUCTION SET