

PARTIAL PLAN SHOWN ON THIS SHEET

SEE SHT. E30.01

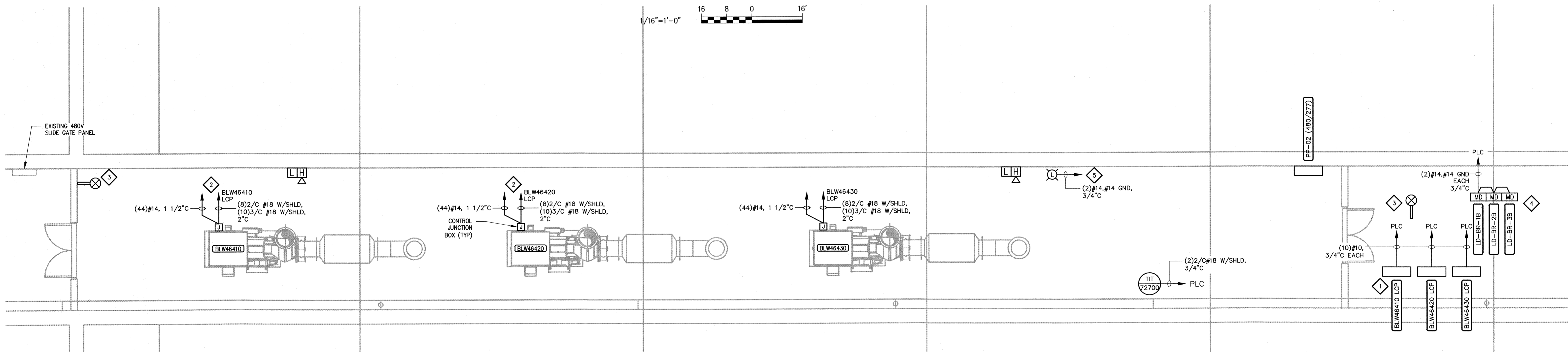
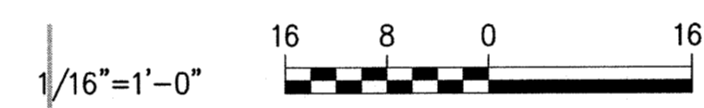
TUNNEL BLOWER ROOM
1/16" = 1'-0"

GENERAL NOTES:

1. ALL ITEMS SHOWN WITH LIGHT DESIGNATION INDICATE EXISTING ITEMS OR ITEMS PART OF OTHERS SCOPE TO REMAIN. ALL ITEMS DESIGNATED WITH BOLD INDICATE NEW ITEMS TO BE INSTALLED.

KEYED NOTES:

1. REFER TO NETWORK ARCHITECTURE DRAWING FOR ADDITIONAL COMMUNICATION WIRING REQUIREMENTS.
2. REFER TO VENDOR FURNISHED DRAWINGS AND REQUIREMENTS FOR FINAL WIRING INFORMATION. MAINTAIN SEPARATION OF ANALOG AND DISCRETE WIRING PER SPECIFICATIONS.
3. REFER TO SHEET E50.01 FOR FIRE ALARM DEVICE WIRING REQUIREMENTS.
4. COORDINATE FINAL LOCATION OF MOTOR DAMPERS WITH HVAC DRAWINGS. REFERENCE DRAWINGS H-3 AND H-5 FOR FURTHER INFORMATION.
5. GAS STROBE SHALL BE FED FROM EXISTING PLC AND GAS DETECTOR UNIT. COORDINATE FINAL TERMINATION POINT WITH OWNER & ENGINEER.



TUNNEL BLOWER ROOM PARTIAL PLAN
3/16" = 1'-0"



20160519 5:01P \\P020\UNDO\Projects\227790 Hazen Sawyer - RWD - East End WWT Aeration\wp\Drawings\Electrical\227790 E40.02.dwg LAST SAVED By: sodams
 XREFS: \\300-A\1\1-IP-SX... \Desk\3021F-00-IB_34422... \300-A\1\1-IP-M
 IMAGE= PLOT DATE: May 19, 2015 - 5:21pm By: SADMMS

DESIGNED	PFH
DRAWN	SAA
CHECKED	AJF
PROJ. ENGR.	BIL
BIL	
BY	
ISSUED FOR	CONSTRUCTION
DATE	MAY 2015
NO.	1

HAZEN AND SAWYER
Environmental Engineers & Scientists
HAZEN AND SAWYER, P.C.
24 FEDERAL STREET 5TH FLOOR - BOSTON, MA 02110

WOODARD & CURRAN
41 Hutchins Drive | Portland, Maine 04102
800.428.4262 | www.woodardcurran.com
COMMITMENT & INTEGRITY
DRIVE RESULTS

STATE OF MAINE
ANDREW J. FITZPATRICK
No. 11827
LICENSED PROFESSIONAL ENGINEER

PORTLAND WATER DISTRICT
PORTLAND, MAINE
EAST END WASTEWATER TREATMENT FACILITY
AERATION UPGRADE

ELECTRICAL
TUNNELS & BLOWER ROOM
INSTRUMENT PLAN & BUILDING SYSTEMS

DATE	MAY 2015
DWG. NO.:	E40.02
SHEET NO.:	87
FILE NAME:	227790 E40.02