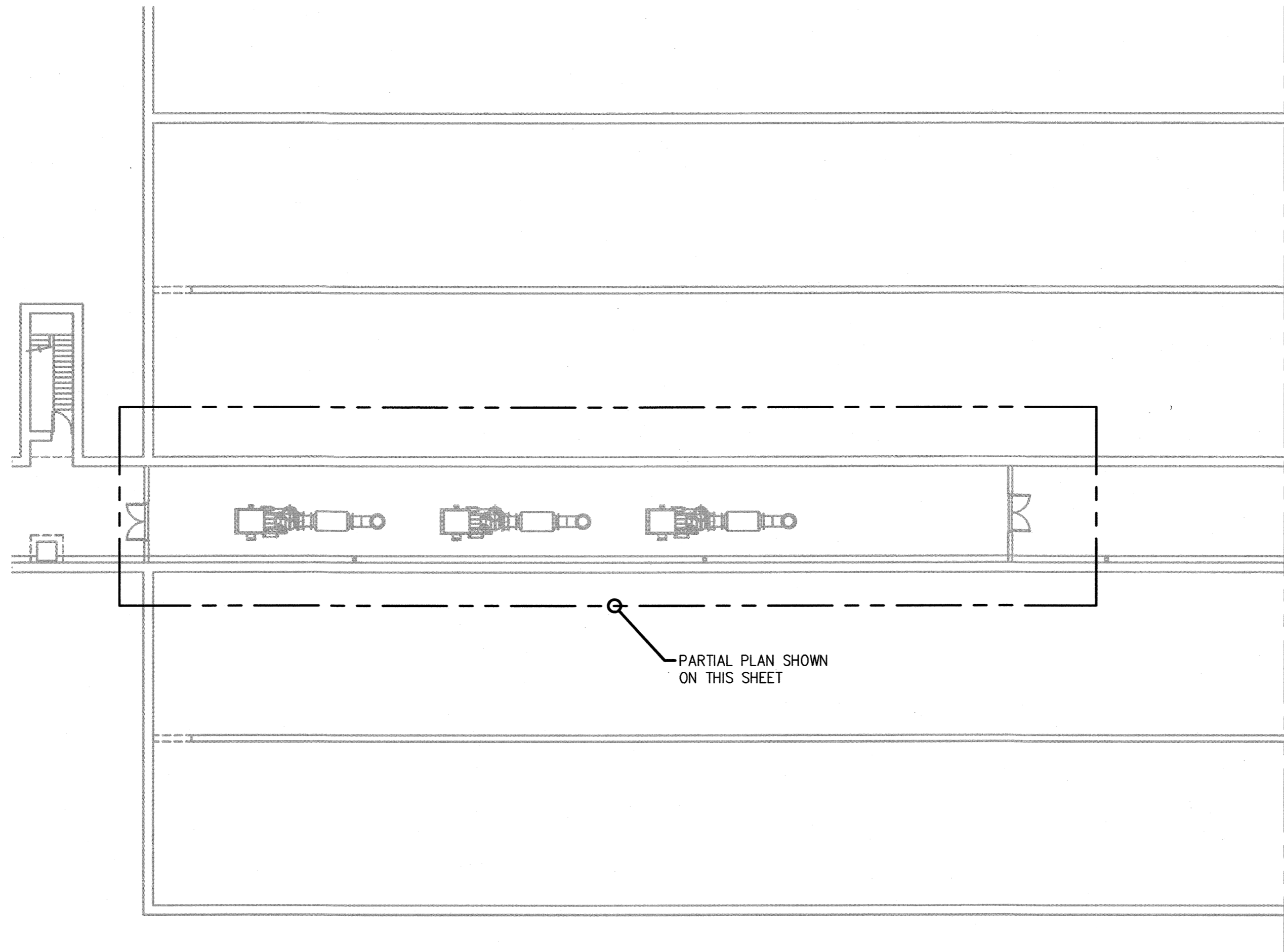


**GENERAL NOTES:**

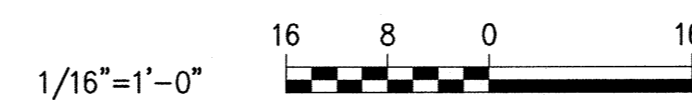
- ALL ITEMS SHOWN WITH LIGHT DESIGNATION INDICATE EXISTING ITEMS OR ITEMS PART OF OTHERS SCOPE TO REMAIN. ALL ITEMS DESIGNATED WITH BOLD INDICATE NEW ITEMS TO BE INSTALLED.
- PROVIDE LABELS FOR POWER SOURCE.

**KEYED NOTES:**

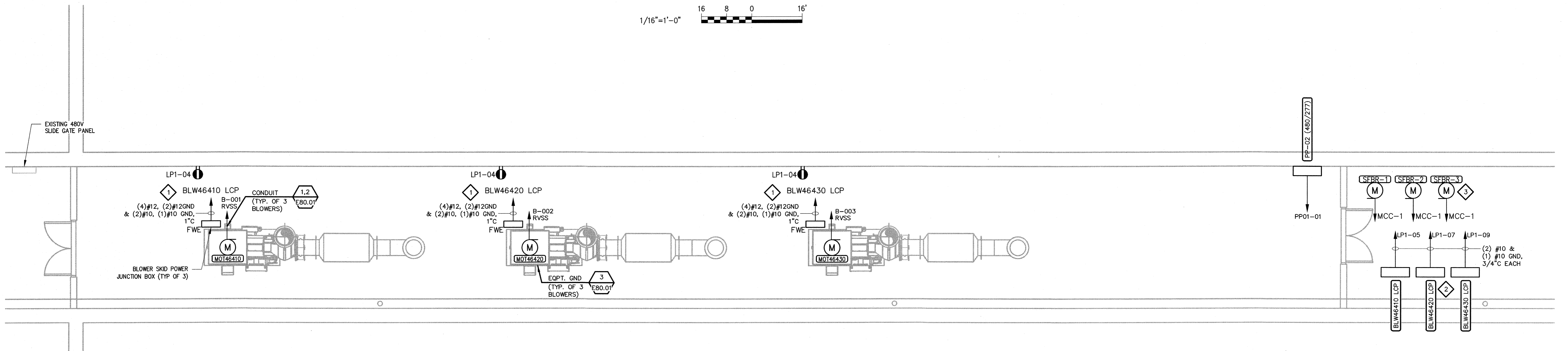
- COORDINATE FINAL 120V WIRING WITH VENDOR FURNISHED DRAWINGS. FINAL CONDUIT SIZE SHALL BE DETERMINED IN FIELD.
- CONTRACTOR SHALL PROVIDE UNISTRUT AND MOUNTING HARDWARE TO MOUNT BLOWER LCP PANELS APPROXIMATELY 3'-6" AWAY FROM TUNNEL SOUTH WALL TO AVOID INTERFERENCE WITH HVAC DUCT WORK AND CONDUIT ROUTING LOCATIONS.
- REFER TO HVAC DRAWINGS FOR EXACT LOCATIONS OF SUPPLY FAN MOTORS.



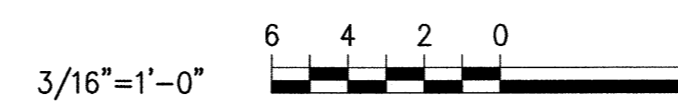
**TUNNEL BLOWER ROOM**  
1/16" = 1'-0"



SEE SHT. E30.01



**TUNNEL BLOWER ROOM PARTIAL PLAN**  
3/16" = 1'-0"



20150519 5:21p \\PORTLAND\Projects\227790 Hazen Sawyer - PWD - East End WWP Aeration\Drawings\Electrical\227790 E30.02.dwg - LAST SAVED By: esdome  
 XREFs= \\black\30215-000-1B\_14422\_1\PORTLAND\Projects\227790 Hazen Sawyer - PWD - East End WWP Aeration\Drawings\300-AT\AT-LP-SX\_300-AT\AT-LP-M  
 PLOT DATE: May 19, 2015 - 5:21pm By: SJDAMS

DESIGNED	PFH		
DRAWN	SAA		
CHECKED	AJF		
PROJ. ENGR.	BIL		
NO.	DATE	CONSTRUCTION ISSUED FOR	BIL
1	MAY 2015	CONSTRUCTION ISSUED FOR	BIL

DESIGNED	PFH
DRAWN	SAA
CHECKED	AJF
PROJ. ENGR.	BIL

**HAZEN AND SAWYER**  
Environmental Engineers & Scientists  
HAZEN AND SAWYER, P.C.  
24 FEDERAL STREET 5TH FLOOR - BOSTON, MA 02110

**WOODARD & CURRAN**  
41 Hutchins Drive | Portland, Maine 04102  
800.426.4262 | www.woodardcurran.com  
COMMITMENT & INTEGRITY  
DRIVE RESULTS

STATE OF MAINE  
ANDREW J. FITZPATRICK  
No. 11827  
LICENSED PROFESSIONAL ENGINEER  
5-05-20

PORTLAND WATER DISTRICT  
PORTLAND, MAINE  
EAST END WASTEWATER TREATMENT FACILITY  
AERATION UPGRADE

ELECTRICAL  
TUNNEL BLOWER ROOM  
POWER PLAN

DATE	MAY 2015
DWG. NO.:	E30.02
SHEET NO.:	84
FILE NAME:	227790 E30.02