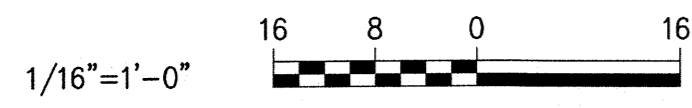
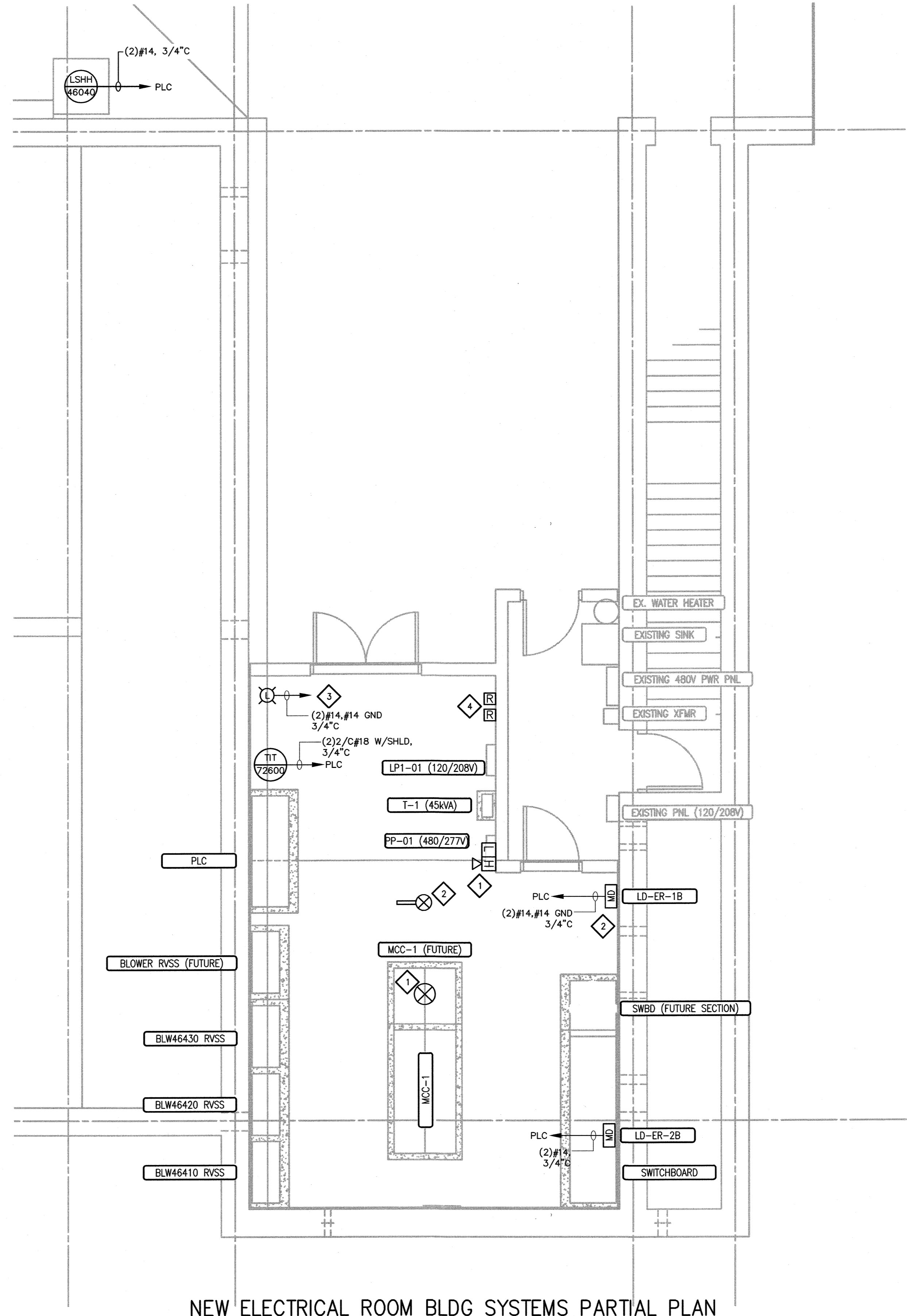


PARTIAL PLAN SHOWN ON THIS SHEET

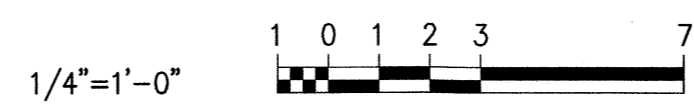
NEW ELECTRICAL ROOM
1/16" = 1'-0"



SEE SHT. E20.02



NEW ELECTRICAL ROOM BLDG SYSTEMS PARTIAL PLAN
1/4" = 1'-0"



- GENERAL NOTES:**
1. FIRE ALARM NOTIFICATION DEVICES SHALL BE INSTALLED IN ACCORDANCE WITH NFPA 72, IBC-2009 AND LOCAL BUILDING CODES.

- KEYED NOTES:**
1. REFER TO SHEET E50.01 FOR FIRE ALARM DEVICE WIRING REQUIREMENTS.
 2. COORDINATE FINAL LOCATION OF MOTOR DAMPERS AND DUCT SMOKE DETECTOR WITH HVAC DRAWINGS. REFERENCE DRAWINGS H-3 AND H-5 FOR FURTHER INFORMATION.
 3. GAS STROBE SHALL BE FED FROM EXISTING GAS DETECTION EQUIPMENT. COORDINATE FINAL TERMINATION POINT AND LOCATION WITH OWNER & ENGINEER.
 4. FINAL LOCATION OF RELAY MODULES SHALL BE DETERMINED IN FIELD.

C:\P\PORTLAND\Projects\E40.01\Drawings\227790 E40.01.dwg - East End WTP Aeration\227790 E40.01.dwg - East End WTP Aeration\227790 E40.01.dwg
 DESIGNED: PPH
 DRAWN: SAA
 CHECKED: AJF
 PROJ. ENGR: BIL
 DATE: MAY 2015
 BY: BIL
 PLOT DATE: May 19, 2015 - 5:21pm BY: SACDMS

NO.	DATE	ISSUED FOR	BY
1	MAY 2015	CONSTRUCTION	BIL
		ISSUED FOR	BY

DESIGNED	PPH
DRAWN	SAA
CHECKED	AJF
PROJ. ENGR.	BIL

HAZEN AND SAWYER
Environmental Engineers & Scientists
HAZEN AND SAWYER, P.C.
24 FEDERAL STREET 5TH FLOOR - BOSTON, MA 02110

WOODARD & CURRAN
41 Hutchins Drive | Portland, Maine 04102
800.428.4262 | www.woodardcurran.com
COMMITMENT & INTEGRITY
DRIVE RESULTS

PORTLAND WATER DISTRICT
PORTLAND, MAINE
EAST END WASTEWATER TREATMENT FACILITY
AERATION UPGRADE
15-05-20

ELECTRICAL
NEW ELECTRICAL ROOM
INSTRUMENT & BUILDING SYSTEMS PLAN

DATE	MAY 2015
DWG. NO.	E40.01
SHEET NO.	86
FILE NAME	227790 E40.01