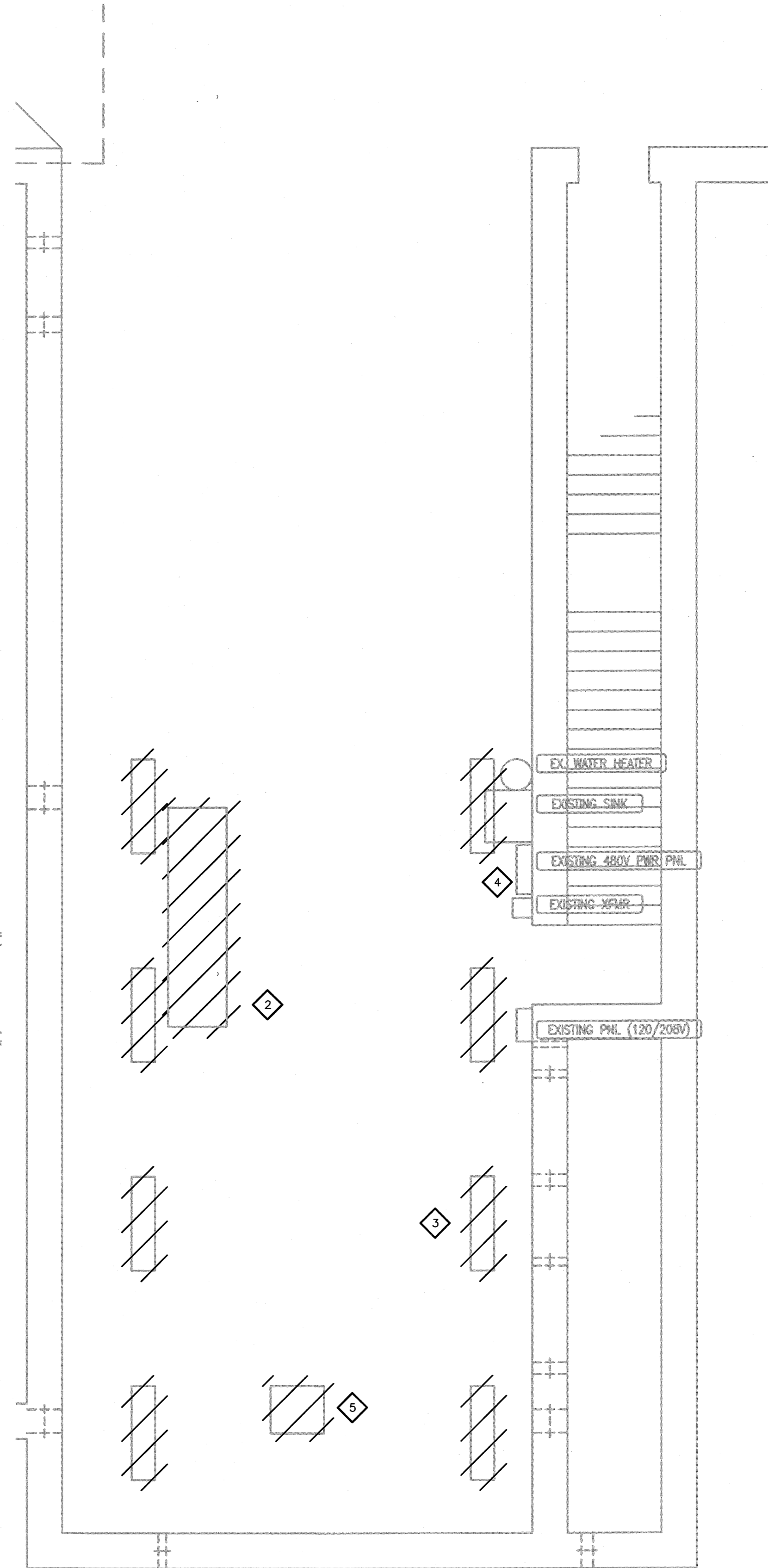
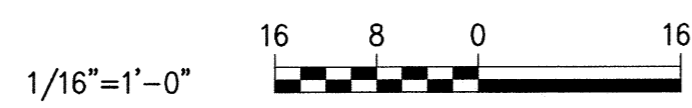
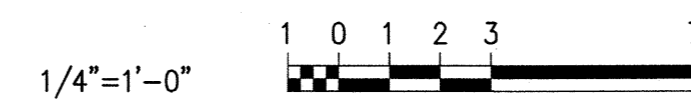


**NEW ELECTRICAL ROOM AND TUNNEL**  
1/16" = 1'-0"



**NEW ELECTRICAL ROOM PARTIAL DEMOLITION PLAN**  
1/4" = 1'-0"



- DEMOLITION NOTES:**
1. ALL ITEMS SHOWN WITH LIGHT DESIGNATION INDICATES EXISTING EQUIPMENT TO REMAIN. ALL ITEMS SHOWN WITH HATCHED DESIGNATION INDICATES EXISTING EQUIPMENT TO BE REMOVED AND DISPOSED OF, UNLESS SPECIFICALLY INDICATED OTHERWISE. ALL ITEMS INDICATED FOR REMOVAL SHALL BE REMOVED WITH ALL ASSOCIATED HARDWARE AND ACCESSORIES COMPLETE BACK TO SOURCE, INCLUDING, BUT NOT LIMITED TO CONDUIT, BOXES, WIRING, CABLES, HANGERS, SUPPORTS, ETC.
  2. THE INTENT OF THE DEMOLITION PLANS IS TO DOCUMENT EXISTING CONDITIONS. HOWEVER, ALL ELECTRICAL EQUIPMENT AND DUCTBANKS MAY NOT NECESSARILY BE INDICATED ON THE DRAWINGS. FIELD VERIFY AND ADJUST WORK TO SUIT ALL CONDITIONS FOUND.
  3. IN ALL LOCATIONS WHERE EQUIPMENT AND WIRING IS TO REMAIN, BUT CANNOT BE DISCONNECTED WITHOUT DAMAGE, PROVIDE NEW EQUIPMENT AND HARDWARE AS REQUIRED, ENSURING PROPER FACILITY OPERATION.
  4. IN ALL SURROUNDING AREAS THAT ARE NOT BEING RENOVATED UNDER THIS CONTRACT, VERIFY THAT ELECTRICAL POWER, LIGHTING, AND SYSTEMS HAVE NOT BEEN AFFECTED BY THE ALTERATIONS. IN LOCATIONS WHERE SYSTEMS ARE AFFECTED, PROVIDE ALL WORK AS REQUIRED TO MAINTAIN PROPER OPERATIONS OF THESE SYSTEMS.
  5. THE CONTRACTOR SHALL ARRANGE TO EXECUTE ALL WORK AT SUCH TIMES AND IN SUCH LOCATIONS TO PROVIDE UNINTERRUPTED SERVICES FOR THE BUILDING, OR ANY OF ITS SECTIONS. IF NECESSARY, TEMPORARY WORK SHALL BE INSTALLED TO PROVIDE FOR THIS CONDITION. AUTHORIZATION FOR INTERRUPTING SERVICES SHALL BE OBTAINED IN WRITING FROM THE OWNER.

- KEYED NOTES:**
1. DISCONNECT EXISTING LIGHTING FIXTURES AND SUPPORT HANGERS INTERFERING WITH NEW BLOWER ROOM LOCATION. DISCONNECTED LIGHTS TO BE RETURNED TO OWNER. UNAFFECTED LIGHTS SHALL REMAIN CONNECTED TO EXISTING CIRCUIT.
  2. ELECTRICALLY DISCONNECT SLUDGE PUMP FOR REMOVAL. CONDUIT AND WIRING TO BE REMOVED BACK TO SOURCE.
  3. DISCONNECT AND REMOVE LIGHTING FIXTURES INTERFERING WITH NEW ELECTRICAL ROOM. DISCONNECTED LIGHTS TO BE RETURNED TO OWNER. UNAFFECTED LIGHTS SHALL REMAIN CONNECTED TO EXISTING CIRCUIT.
  4. DISCONNECT AND RELOCATE SLIDE GATE POWER PANEL FEEDER CABLES AND CONDUIT. ROUTE NEW CABLES AND CONDUIT ALONG NORTH WALL TO AVOID INTERFERENCE WITH NEW BLOWER EQUIPMENT AND PIPING. SLIDE GATE PANEL IS FED FROM EXISTING MCC-PG1 IN ELECTRICAL ROOM SHOWN THIS SHEET. ELECTRICAL ROOM IS ACCESSED FROM GROUND LEVEL.
  5. DISCONNECT EXISTING EXHAUST FAN FOR REMOVAL. CONDUIT AND WIRING TO BE REMOVED BACK TO SOURCE.
  6. DISCONNECT AND REMOVE EXISTING SPEAKERS AND HARDWARE INTERFERING WITH NEW BLOWER ROOM LOCATION AND NEW HVAC DUCT WORK. UNAFFECTED SPEAKERS SHALL REMAIN CONNECTED TO EXISTING CIRCUIT.

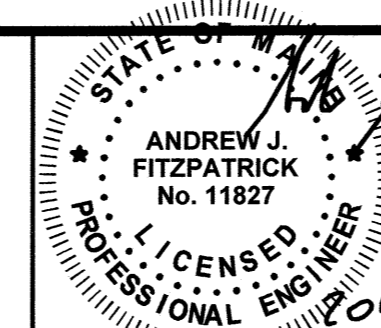
SEE SHT. E15.02

20150519\_5:05p \\PORTLAND\Projects\227790\_Hazen Sawyer - PWD - East End WWT - Aeration\Drawings\Electrical\227790\_E15.02.dwg - LAST SAVED BY: esdome  
 XREFS: \\PORTLAND\Projects\227790\_Hazen Sawyer - PWD - East End WWT - Aeration\Drawings\Block\2015-05-19\_1300-AT-1-P-SX\_1300-AT-1-P-E  
 IMAGE\$= \\PORTLAND\Projects\227790\_Hazen Sawyer - PWD - East End WWT - Aeration\Drawings\Block\2015-05-19\_1300-AT-1-P-SX\_1300-AT-1-P-E  
 PLOT DATE: May 19, 2015 - 5:20pm By:SDAMS

DESIGNED	PFH
DRAWN	SAA
CHECKED	AJF
1	MAY 2015
NO.	DATE
CONSTRUCTION	BIL
ISSUED FOR	BY
PROJ.ENGR.	BIL

**HAZEN AND SAWYER**  
Environmental Engineers & Scientists  
HAZEN AND SAWYER, P.C.  
24 FEDERAL STREET 5TH FLOOR - BOSTON, MA 02110

**WOODARD & CURRAN**  
41 Hutchins Drive | Portland, Maine 04102  
800.426.4262 | www.woodardcurran.com  
COMMITMENT & INTEGRITY  
DRIVE RESULTS



**PORTLAND WATER DISTRICT**  
PORTLAND, MAINE  
**EAST END WASTEWATER TREATMENT FACILITY**  
AERATION UPGRADE

**ELECTRICAL**  
**NEW ELECTRICAL ROOM**  
**DEMOLITION PLAN**

DATE	MAY 2015
DWG. NO.:	E15.01
SHEET NO.:	79
FILE NAME:	227790 E15.01