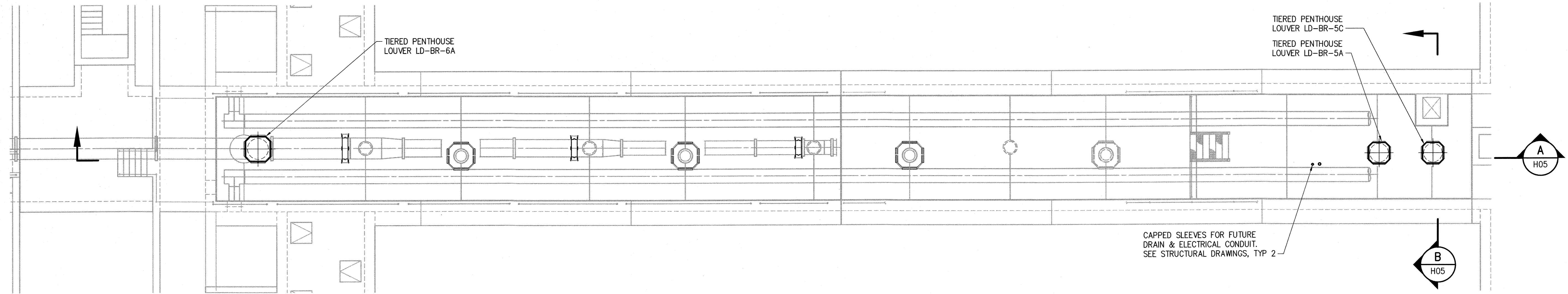
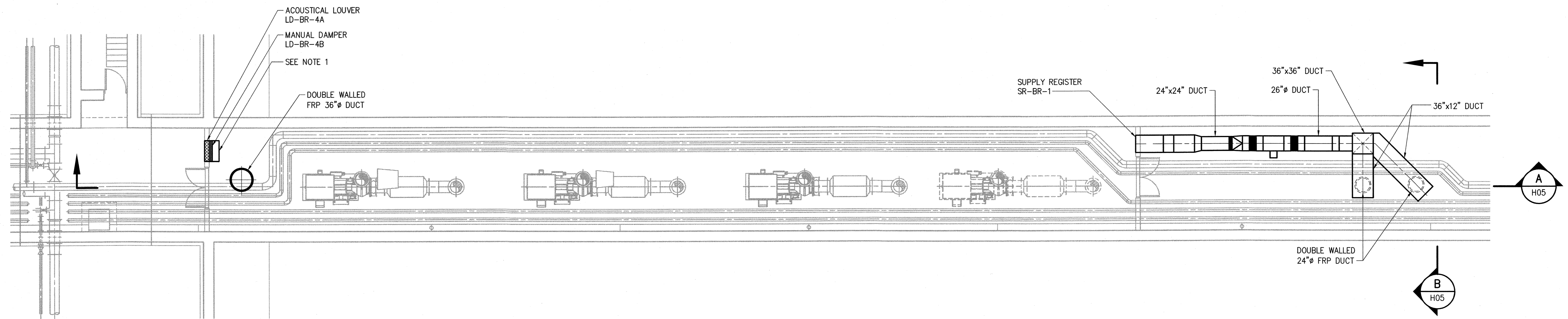


NOTES:

1. PROVIDE A DUCT SLEEVE THAT EXTENDS 12" INTO THE BLOWER ROOM. DAMPER LD-BR-1B SHALL BE INSTALLED IN SLEEVE. THE INSIDE EDGE OF THE SLEEVE SHALL BE FLANGED IN ORDER TO MOUNT A REMOVABLE ACOUSTICAL PANEL. SEE ARCHITECTURAL DRAWINGS FOR THE ACOUSTICAL PANEL DETAILS.



TOP PLAN
1/8" = 1'-0"



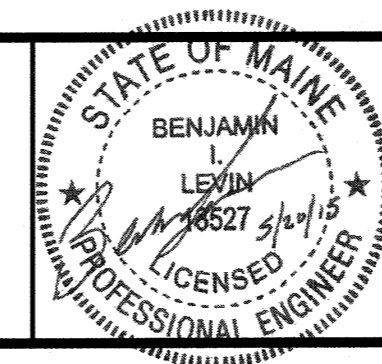
BOTTOM PLAN
1/8" = 1'-0"

1/8" = 1'-0"

20150520 3:10p C:\B270\p15\90216-000 Portland Aeration Upgrade\Drawings\HVAC\90216-000H03.dwg
 XREFS= \\block\90216-000-TB-34222... \300-AT\AT-LP-SK... \300-AT\AT-LP-M... \300-AT\AT-LP-H... \300-AT\AT-LP-H... \300-AT\AT-LP-H...
 MAKE= \\block\2015.05.20 - 5EAL-MECH
 PLOT DATE: May 20, 2015 - 3:10pm By: MBRANDT

DESIGNED	SB		
DRAWN	MJB		
CHECKED	CMB		
NO.	DATE	CONSTRUCTION ISSUED FOR	BIL BY
1	MAY 2015		BIL

HAZEN AND SAWYER
Environmental Engineers & Scientists
HAZEN AND SAWYER, P.C.
24 FEDERAL STREET 5TH FLOOR - BOSTON, MA 02110



PORTLAND WATER DISTRICT
PORTLAND, MAINE
EAST END WASTEWATER TREATMENT FACILITY
AERATION UPGRADE

BLOWER ROOM
HVAC
TOP AND BOTTOM PLAN

DATE	MAY 2015
DWG. NO.:	H03
SHEET NO.:	73
FILE NAME:	90216-000H03

FINAL DRAWING - ISSUED FOR CONSTRUCTION