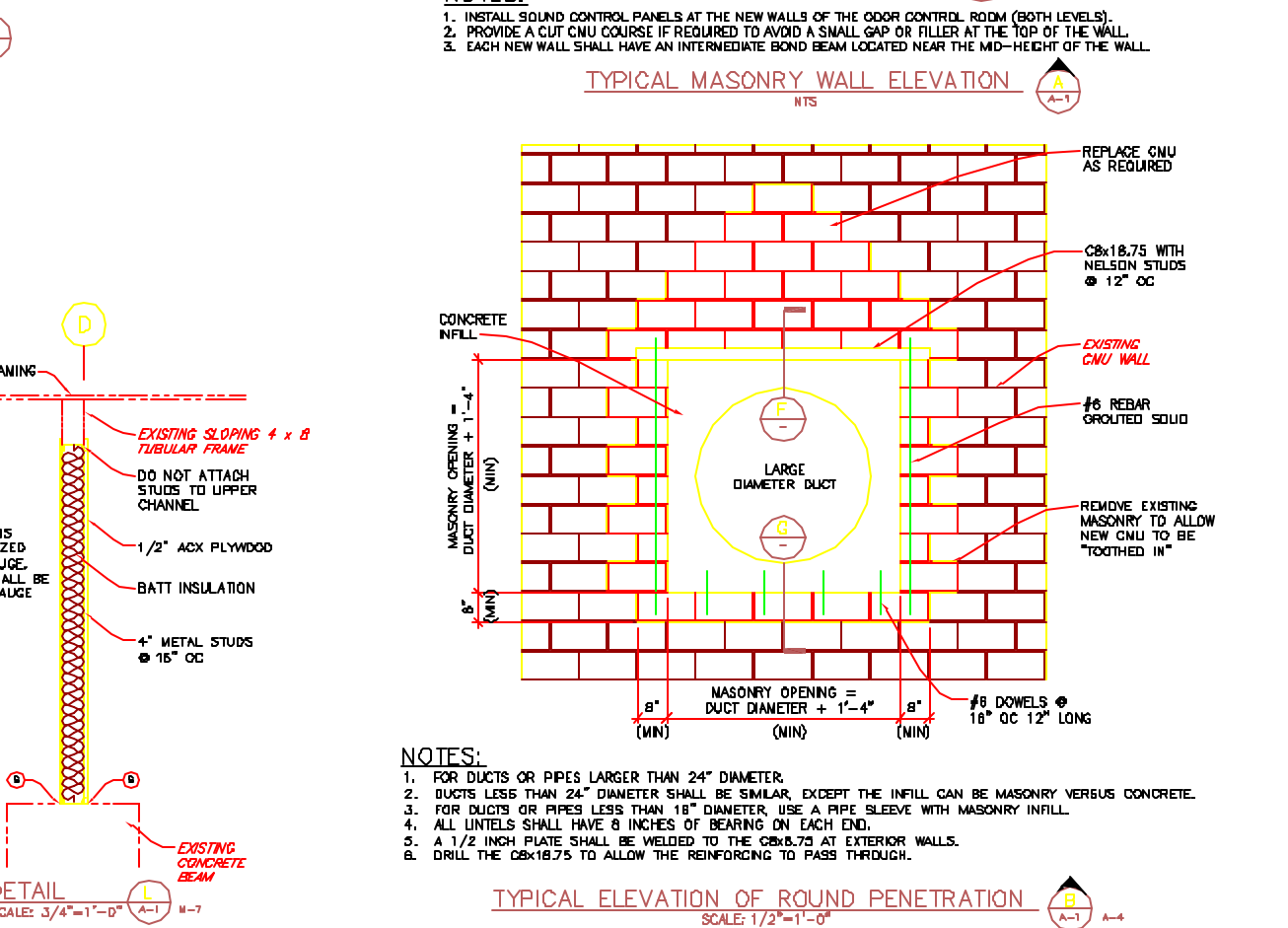
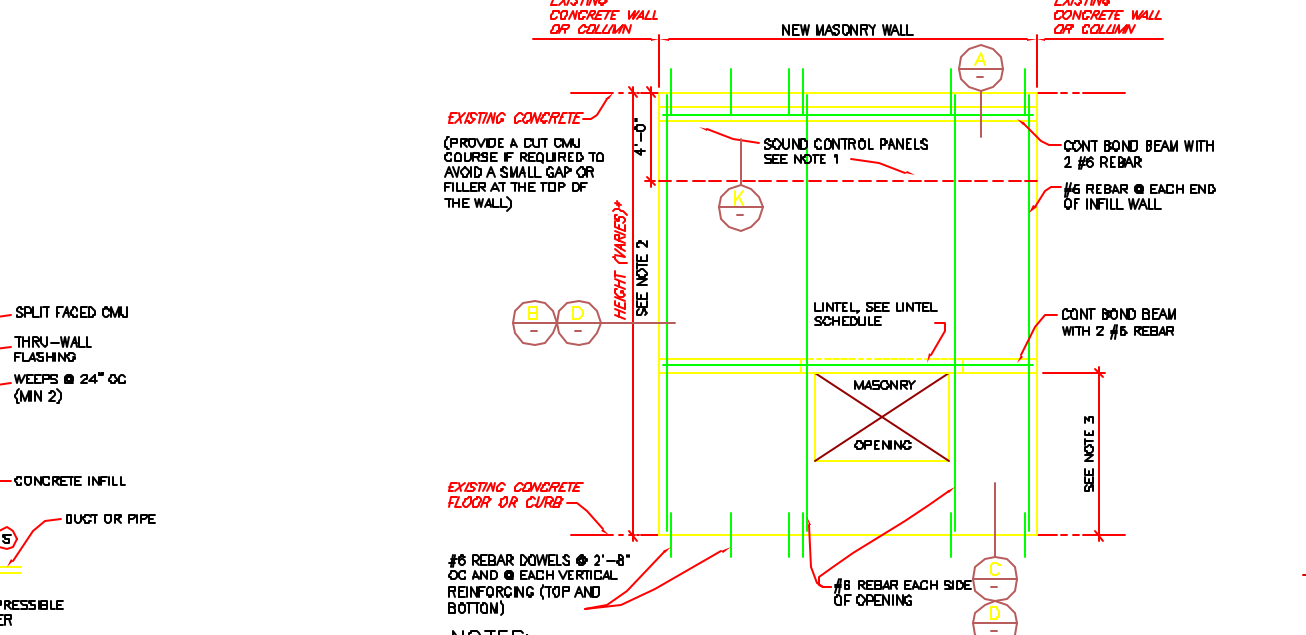


ROOM FINISH SCHEDULE

BUILDING	RM NO	ROOM NAMES	FLOOR FIN.	BASE MATL.	WALLS								CEILING		REMARKS	
					NORTH		SOUTH		EAST		WEST		MATL.	FIN.		
					MATL.	FIN.	MATL.	FIN.	MATL.	FIN.	MATL.	FIN.				
	P001	CHEMICAL ROOM	A	-	CNU	EP	CNU	EP	CNU	EP	CNU	EP	CONC	CONC	SEE NOTE 4	
	P002	ODOR CONTROL ROOM	-	-	CONC	EP	CNU	CONC	EP	CONC	EP	CNU	EP	CONC	CONC	

NOTES:
1. FINISH ALL NEW ITEMS INSTALLED IN THE FACILITY.
2. AT INFILL AREAS AND OTHER AREAS OF LIMITED WORK, THE NEW FINISHES SHALL MATCH THE EXISTING FINISHES.
3. FINISH BOTH SIDES OF ALL NEW WALLS, INFILL PANELS AND COMPONENTS.
4. PROVIDE SECONDARY CONTAINMENT COATINGS AT THE WALLS AND FLOOR WITHIN THE SPILL CONTAINMENT AREAS, INCLUDING THE FILL STATION IN THE EXISTING CHEMICALS ROOM.

ABBREVIATIONS:
CNU - CONCRETE MASONRY UNIT
CONC - CONCRETE
P - PAINTED
EP - EPOXY PAINTED



Wright-Pierce
99 Main Street, Topsham, Maine USA 04086
TEL (207) 725-8721 FAX (207) 725-8414

**PORTLAND WATER DISTRICT
PORTLAND, MAINE
PRIMARY SEDIMENTATION BASINS
UPGRADE WITH ODOR CONTROL FACILITIES**

WALL ELEVATIONS AND DETAILS

**DWG A-3
8 OF 79**