



**M A R K
MUELLER
ARCHITECTS**
AIA

100 Commercial Street
Portland, Maine 04101
Phone: 207.774.8257
www.muellerarchitects.com

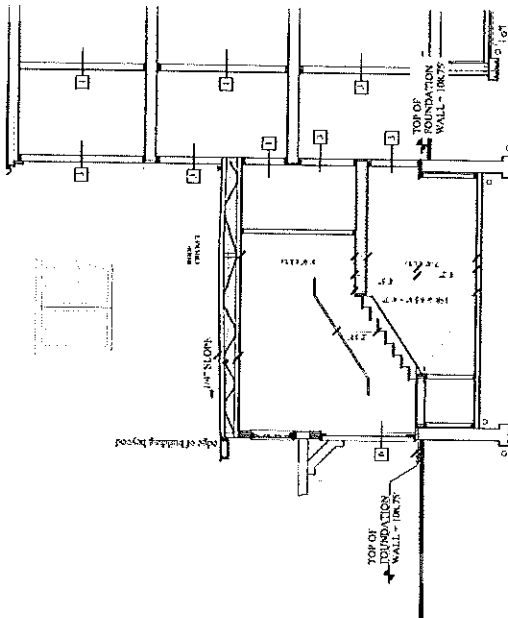
130 EASTERN PROMENADE
FOR: 130 EASTERN PROMENADE LLC
110 MARGINAL WAY
PORTLAND, MAINE 04101

PROPOSED REVISIONS B

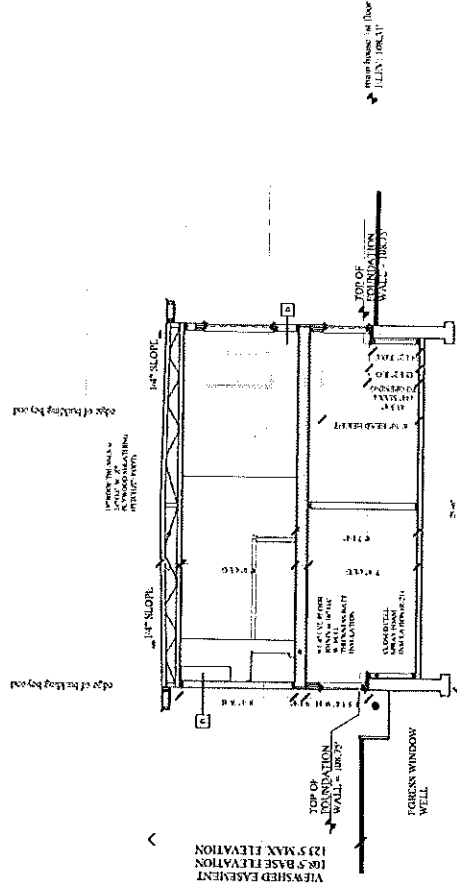
BUILDING SECTIONS

A-3-4

BUILDING PERMIT ADDENDA SET: DECEMBER 31, 2014
REVISED: NOVEMBER 28, 2014
CONSTRUCTION SET: AUGUST 11, 2014



B4 BUILDING SECTION
SCALE: 1/4" = 1'-0"



B3 BUILDING SECTION
SCALE: 1/4" = 1'-0"