

ISSUED FOR:	DATE
FOR RECORD	12/18/05
PERMIT	8/08/05
PERMIT	6/10/05
PUBLIC HEARING	1/18/05
SITE PLAN APPLICATION	8/5/04

**WILSON HEIGHTS
CONDOMINIUMS**
WILSON STREET
PORTLAND MAINE
DHA PROJ. # 20409

SECOND FLOOR PLAN
SCALE: 1/4" = 1'-0"

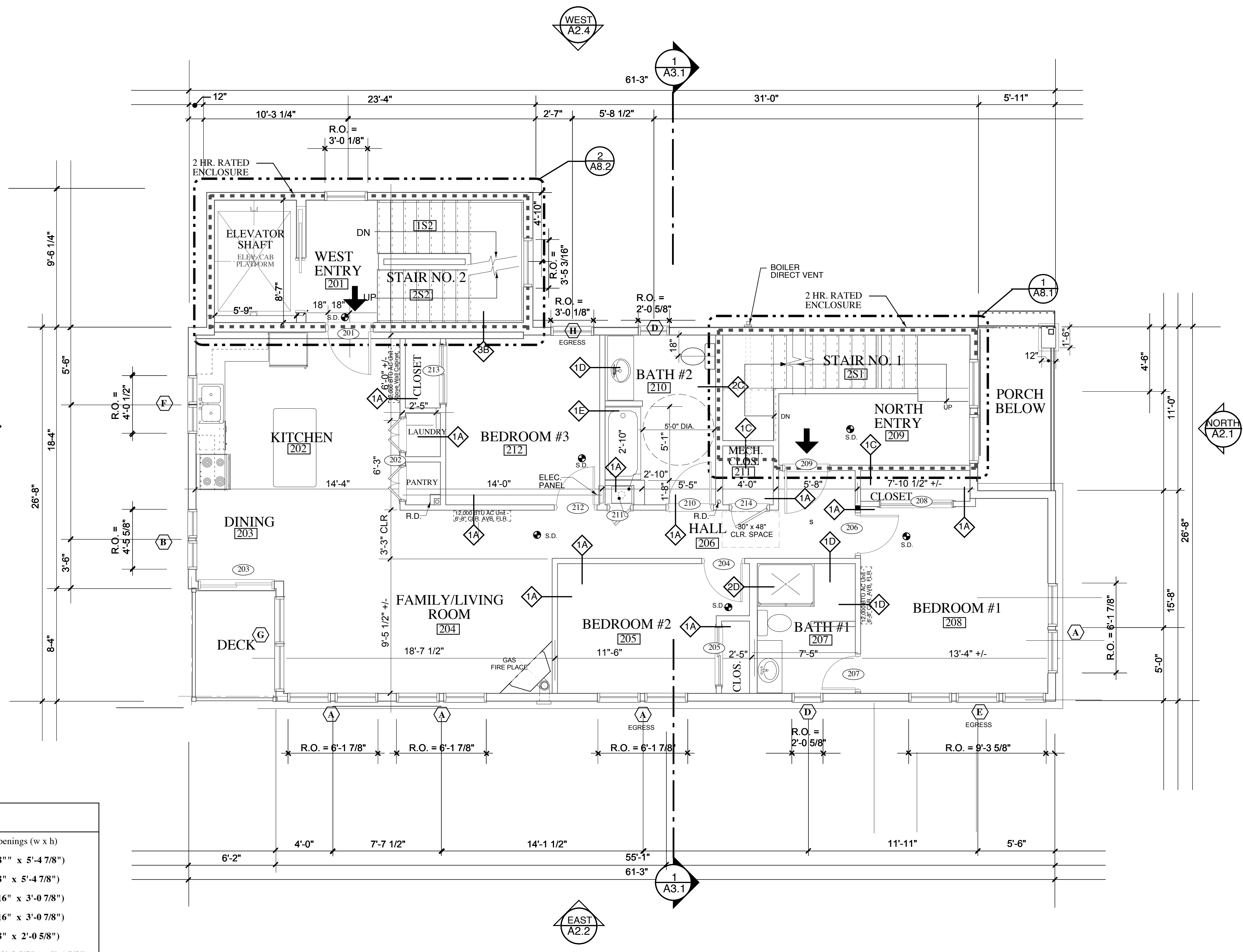
A1.2

DRAWING NO.

- PARTITION TYPES**
- 1A 2x4 w/ One layer 5/8" FIRE RATED
GWB EA. SIDE (NON-RATED)
 - 1B 2x4 w/ One layer 5/8" FIRE RATED
GWB EA. SIDE (1 HOUR RATED)
UL Des U305
 - 1C 2x4 w/ Two layers 5/8" FIRE RATED
GWB EA. SIDE (2 HOUR RATED)
UL Des U301
 - 1D 2x4 w/ One layer 5/8" FIRE RATED
GWB ONE SIDE, MR GWB OTHER
SIDE
 - 1E 2x4 w/ One layer 5/8" FIRE RATED
GWB ONE SIDE, CEMENT BD.
OTHER SIDE
 - 2A 2x6 w/ One layer 5/8" FIRE RATED
GWB EA. SIDE (NON-RATED)
 - 2B 2x6 w/ One layer 5/8" FIRE RATED
GWB EA. SIDE (1 HOUR RATED)
 - 2C 2x6 w/ Two layers 5/8" FIRE RATED
GWB EA. SIDE (2 HOUR RATED)
UL Des U334
 - 2D 2x6 w/ One layer 5/8" FIRE RATED
GWB ONE SIDE, MR GWB OTHER
SIDE
 - 2E 2x6 w/ One layer 5/8" FIRE RATED
GWB ONE SIDE, CEMENT BD.
OTHER SIDE
 - 3A 7 5/8" CMU Block, (2 HOUR RATED)
 - 3B 7 5/8" CMU Block, 2x4 furring one
side w/ 5/8" GWB (2 HOUR RATED)

WINDOW SCHEDULE

symbol	model #	rough openings (w x h)
A	ANDERSEN TW21052 - 2	(6'-1 7/8" x 5'-4 7/8")
B	ANDERSEN TW 2052 - 2	(4'-5 5/8" x 5'-4 7/8")
C	ANDERSEN AXW351	(3'-5 3/16" x 3'-0 7/8")
C2	ANDERSEN AXW351	(3'-5 3/16" x 3'-0 7/8")
D	ANDERSEN A21	(2'-0 5/8" x 2'-0 5/8")
E	ANDERSEN TW21052 - 3	(9'-3 5/8" x 5'-4 7/8")
F	ANDERSEN C24	(4'-0 1/2" x 4'-0 1/2")
G	ANDERSEN TW3046 - 2	(6'-3 7/8" x 4'-8 7/8")
H	ANDERSEN TW21052	(3'-0 1/8" x 5'-4 7/8")



1 SECOND FLOOR PLAN (TYPICAL)
SCALE: 1/4" = 1'-0"

