

ISSUED FOR:	DATE
FOR RECORD	12/18/05
PERMIT	8/08/05
PERMIT	6/10/05
PUBLIC HEARING	1/18/05
SITE PLAN APPLICATION	8/5/04

**WILSON HEIGHTS  
CONDOMINIUMS**  
WILSON STREET  
PORTLAND MAINE  
DHA PROJ. # 2049

**FIRST FLOOR PLAN**  
SCALE: 1/4" = 1'-0"

**A1.1**

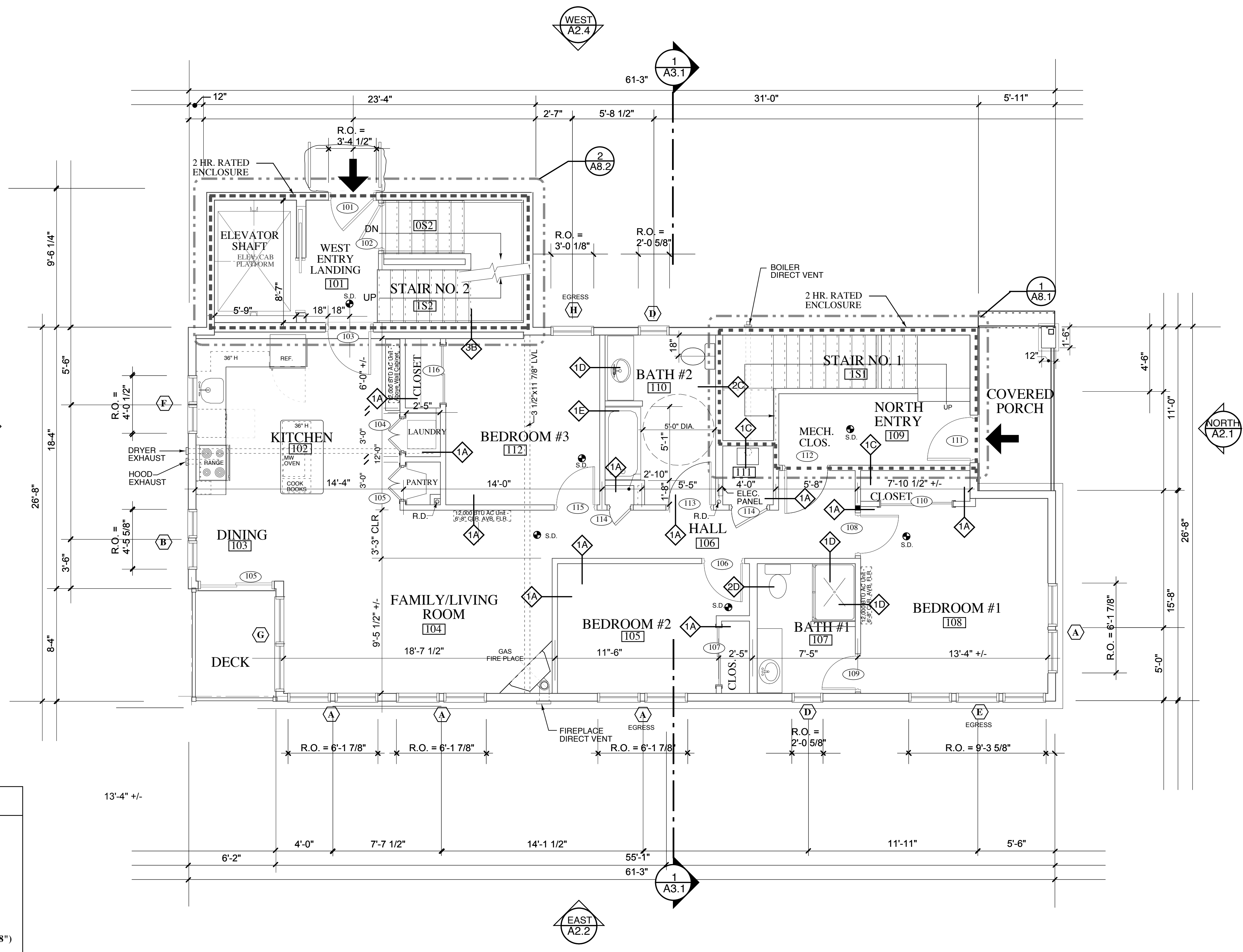
DRAWING NO.

### PARTITION TYPES

1A	2x4 w/ One layer 5/8" FIRE RATED GWB EA. SIDE (NON-RATED)
1B	2x4 w/ One layer 5/8" FIRE RATED GWB EA. SIDE (1 HOUR RATED) UL Des U305
1C	2x4 w/ Two layers 5/8" FIRE RATED GWB EA. SIDE (2 HOUR RATED) UL Des U301
1D	2x4 w/ One layer 5/8" FIRE RATED GWB ONE SIDE, MR GWB OTHER SIDE
1E	2x4 w/ One layer 5/8" FIRE RATED GWB ONE SIDE, CEMENT BD. OTHER SIDE
2A	2x6 w/ One layer 5/8" FIRE RATED GWB EA. SIDE (NON-RATED)
2B	2x6 w/ One layer 5/8" FIRE RATED GWB EA. SIDE (1 HOUR RATED)
2C	2x6 w/ Two layers 5/8" FIRE RATED GWB EA. SIDE (2 HOUR RATED) UL Des U334
2D	2x6 w/ One layer 5/8" FIRE RATED GWB ONE SIDE, MR GWB OTHER SIDE
2E	2x6 w/ One layer 5/8" FIRE RATED GWB ONE SIDE, CEMENT BD. OTHER SIDE
3A	7 5/8" CMU Block, (2 HOUR RATED)
3B	7 5/8" CMU Block, 2x4 furring one side w/ 5/8" GWB (2 HOUR RATED)

### WINDOW SCHEDULE

symbol	model #	rough openings (w x h)
A	ANDERSEN TW21052 - 2	(6'-1 7/8" x 5'-4 7/8")
B	ANDERSEN TW 2052 - 2	(4'-5 5/8" x 5'-4 7/8")
C	ANDERSEN AXW351	(3'-5 3/16" x 3'-0 7/8")
C	ANDERSEN AXW351	(3'-5 3/16" x 3'-0 7/8")
D	ANDERSEN A21	(2'-0 5/8" x 2'-0 5/8")
E	ANDERSEN TW21052 - 3	(9'-3 5/8" x 5'-4 7/8")
F	ANDERSEN C24	(4'-0 1/2" x 4'-0 1/2")
G	ANDERSEN TW3046 - 2	(6'-3 7/8" x 4'-8 7/8")
H	ANDERSEN TW21052	(3'-0 1/8" x 5'-4 7/8")



**1 FIRST FLOOR PLAN**  
SCALE: 1/4" = 1'-0"

