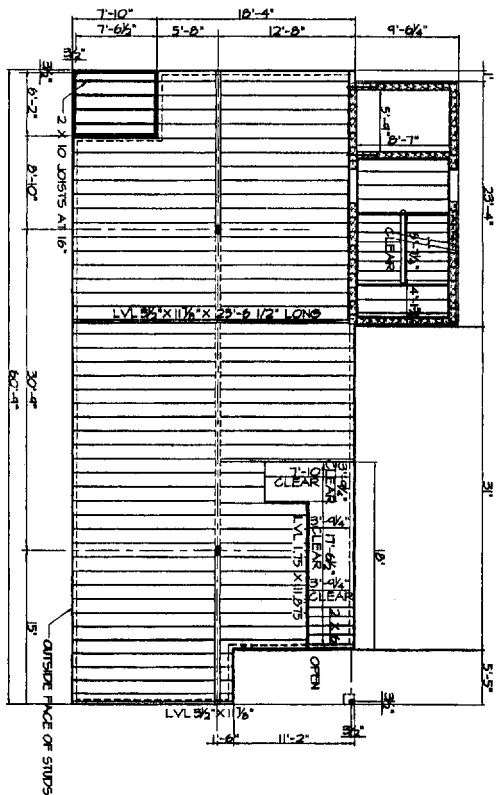
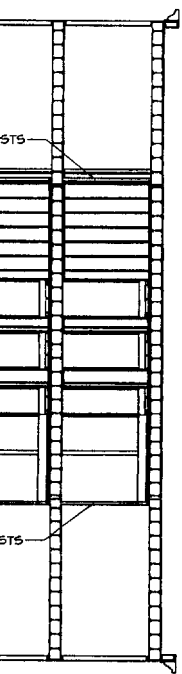
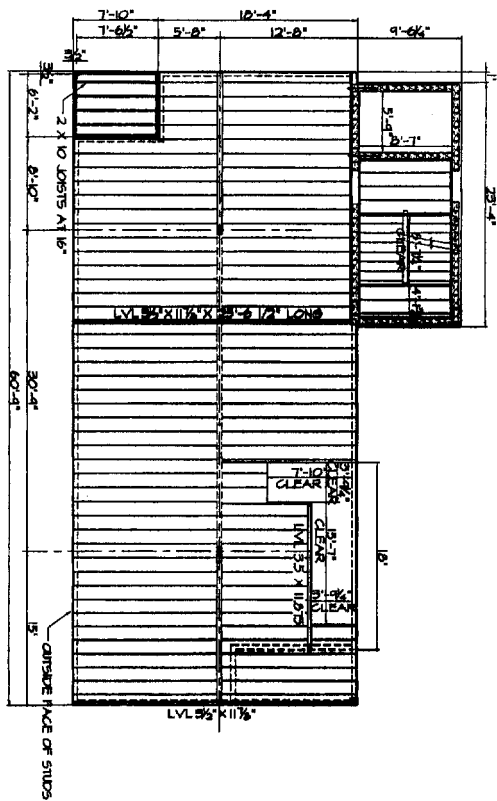


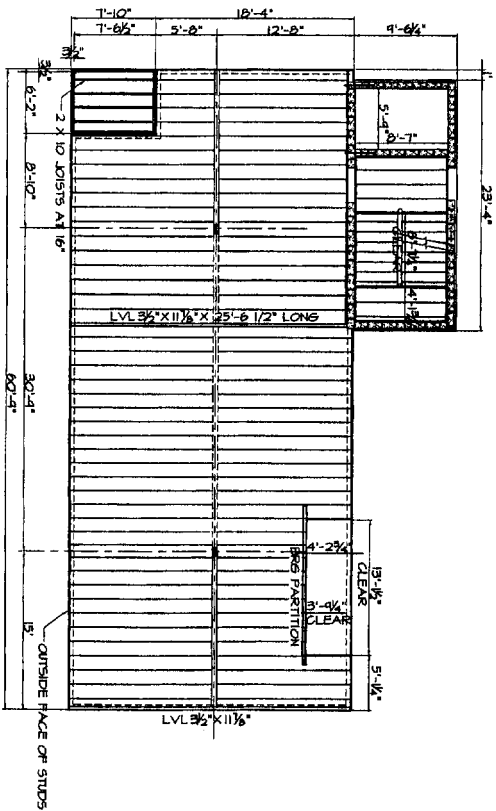
SECOND FLOOR FRAMING PLAN - $1/8" = 1'-0"$



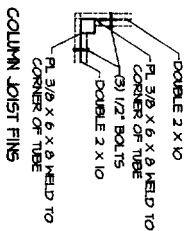
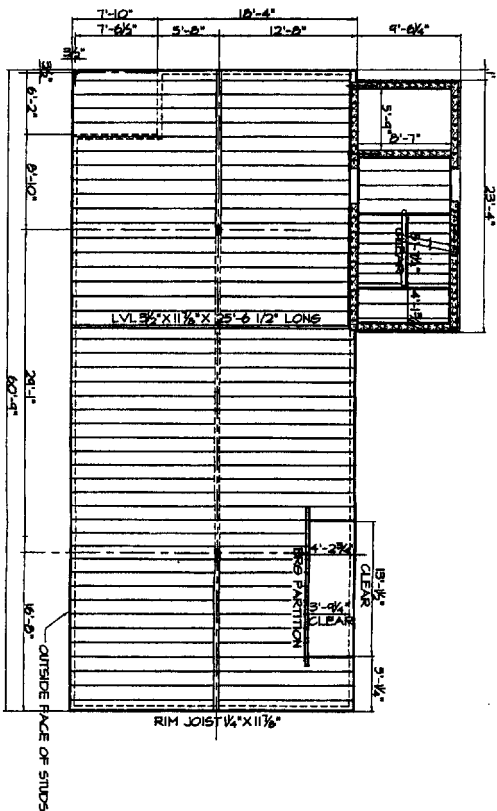
THIRD FLOOR FRAMING PLAN - $1/8" = 1'-0"$



FOURTH FLOOR FRAMING PLAN - $1/8" = 1'-0"$

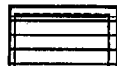


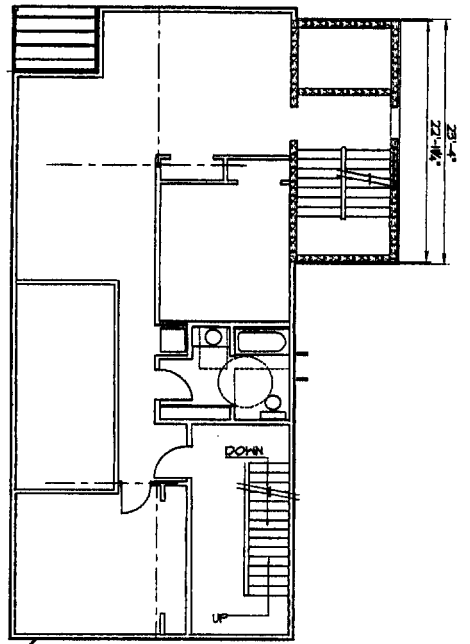
ROOF FRAMING PLAN - $1/8" = 1'-0"$



SHIM BOX JOIST TO COL. FINIS

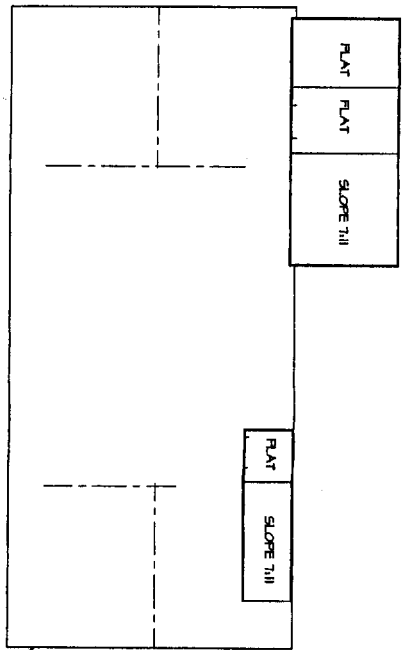
ELEVATION





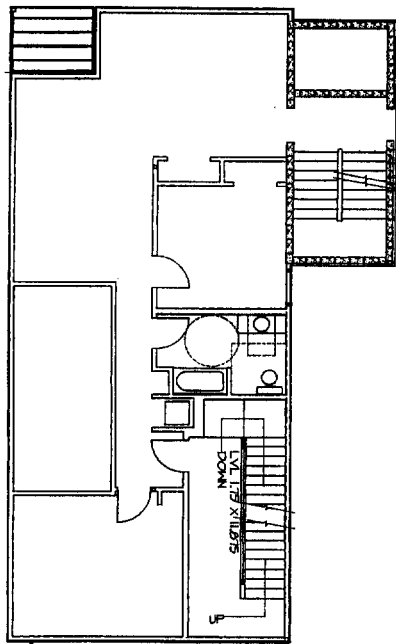
FOURTH FLOOR PLAN - 1/8" = 1'-0"

OUTSIDE FACE OF STUDS



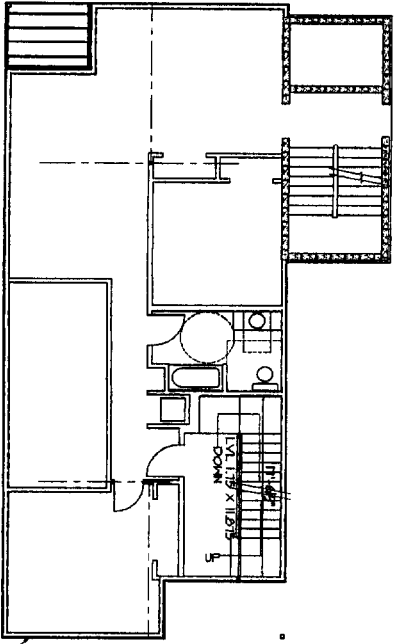
ROOF PLAN - 1/8" = 1'-0"

OUTSIDE FACE OF STUDS



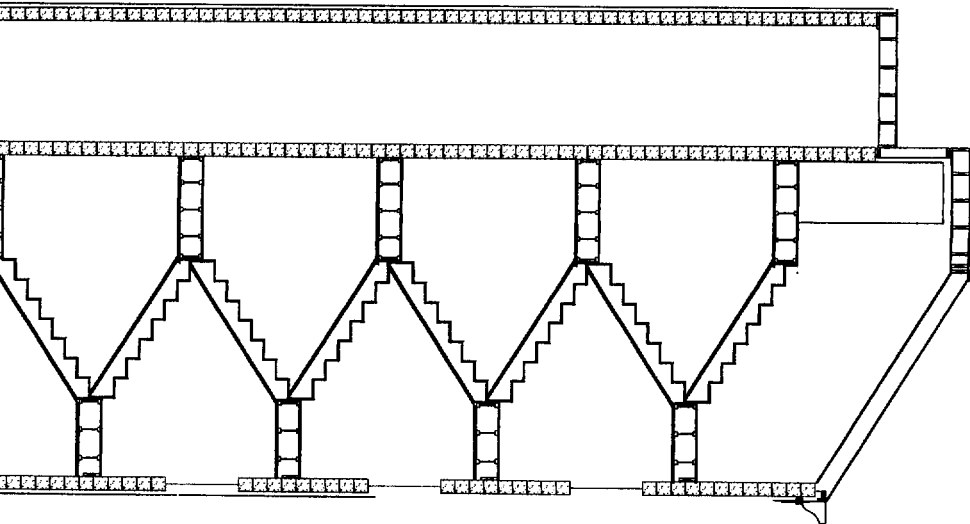
THIRD FLOOR PLAN - 1/8" = 1'-0"

OUTSIDE FACE OF STUDS



SECOND FLOOR PLAN - 1/8" = 1'-0"

OUTSIDE FACE OF STUDS



FRAMING EAST WALL ELEVATION - 1/2" = 1'-0"

NAI ALL SHEATHING PANELS AT 6" C/C
 AT ALL EDGES WITH 8d NAILS AND AT
 12" C/C IN FIELD USE 3 X 6 STUDS AT
 EDGES OF SHEAR PANELS.

FRAMING WEST WALL ELEVATION - 1/2" = 1'-0"

NAI ALL SHEATHING PANELS AT 6" C/C
 AT ALL EDGES WITH 8d NAILS AND AT
 12" C/C IN FIELD.

FRAMING SOUTH WALL ELEVATION - 1/2" = 1'-0"

NAI ALL SHEATHING PANELS AT 6" C/C
 AT ALL EDGES WITH 8d NAILS AND AT
 12" C/C IN FIELD.

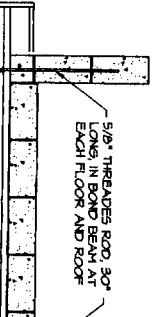
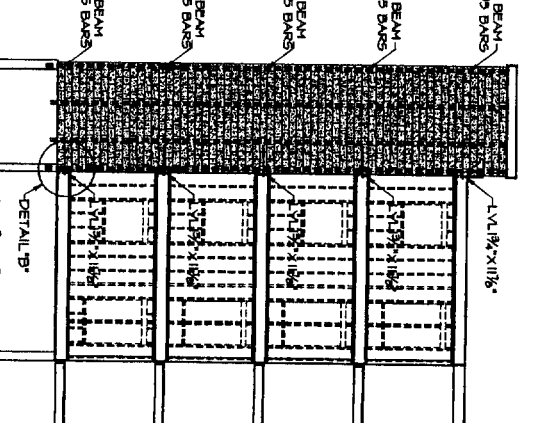
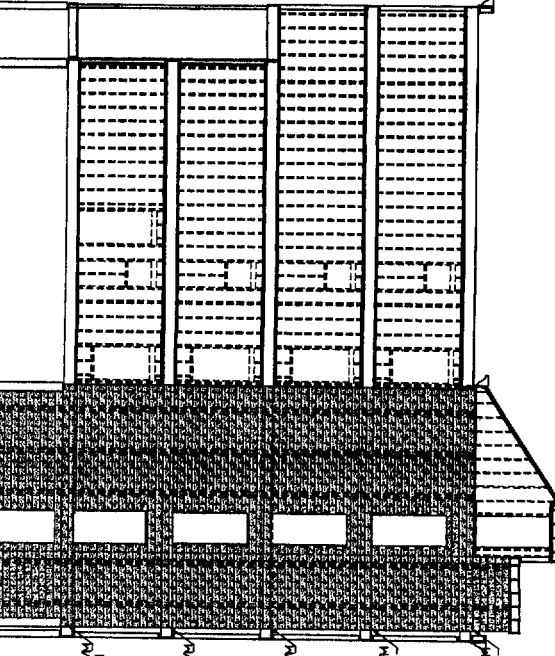
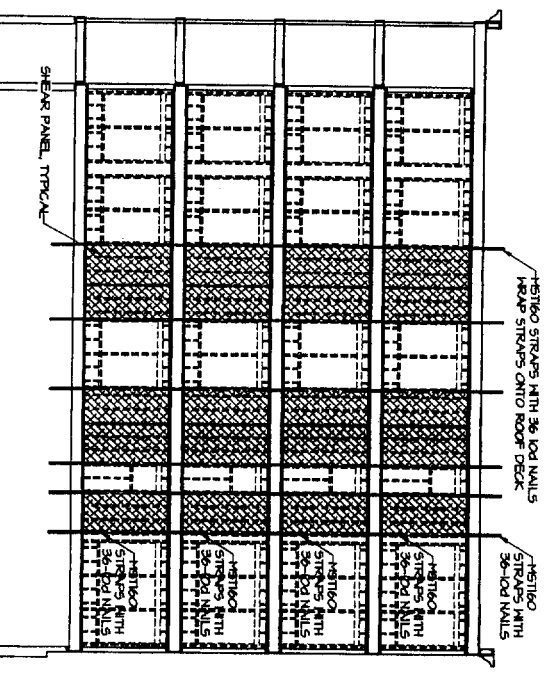
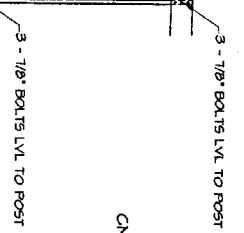
CMU WEST WALL ELEVATION - 1/2" = 1'-0"

DETAIL 'B' - FLOOR TO ELEVATOR SHAFT SHEAR

2 - #5 BARS IN CMU CORES AT 40" RLL
 HEIGHT OF WALL GROUT CORES FROM
 BOND BEAM TO BOND BEAM

DETAIL 'C' - REINFORCED CMU WALLS AT STAIRWELL
 AND ELEVATOR SHAFT - 1/2" = 1'-0"

2 - #1 BARS SPACED 16"
 IN FOUNDATION WALL,
 OF CMU AND EXTEND
 #1 BARS IN ELEVATOR
 AND STAIRWELL END



SMH #1017
 RIM EL: 120.44'
 INVERT IN: 111.93'
 INVERT OUT: 111.88'

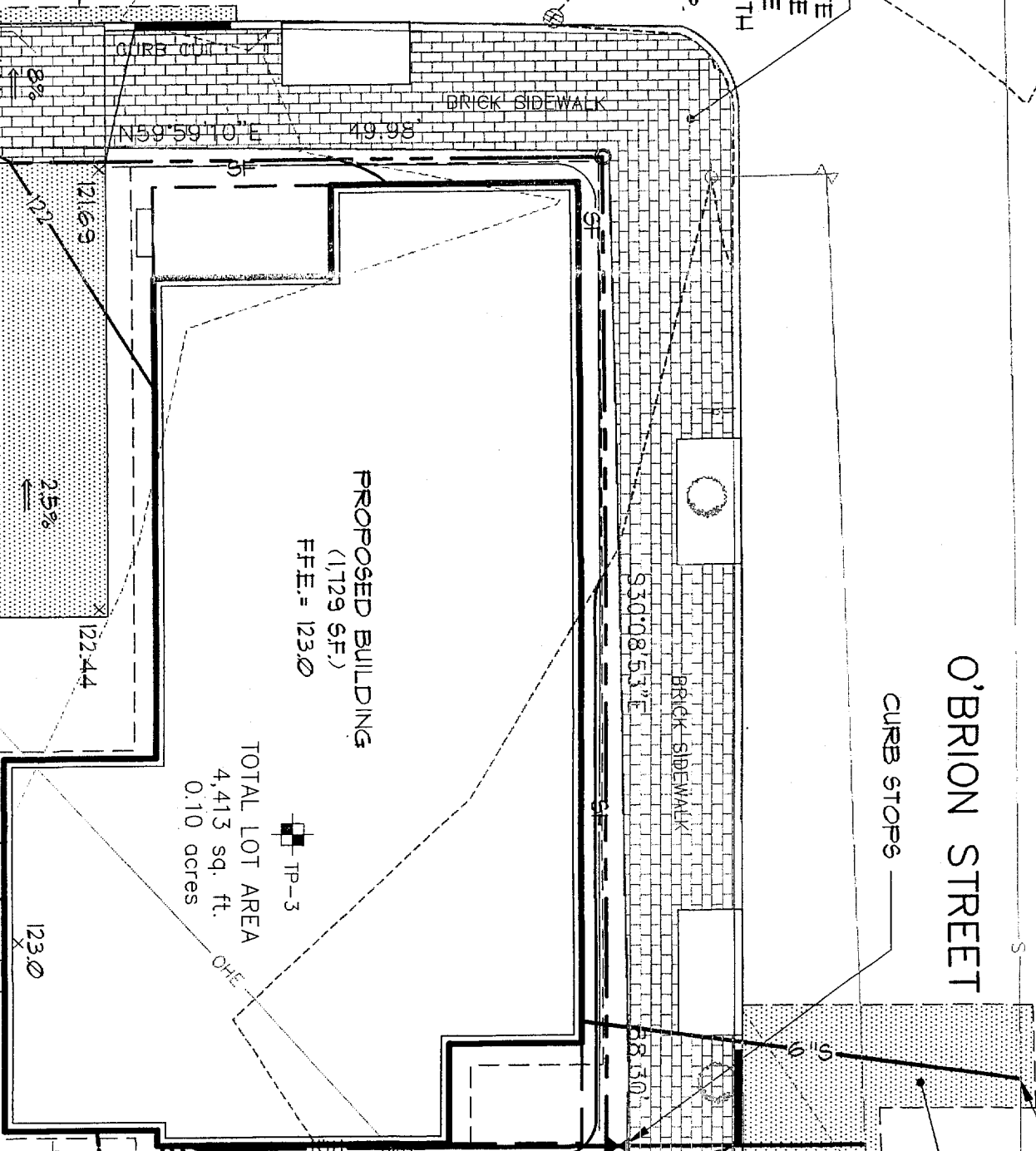
REPLACE BRICK
 DEWALK & GRANITE
 JRB ALONG ENTIRE
 PROJECT FRONTAGE
 ACCORDANCE WITH
 ORTLAND PUD
 REQUIREMENTS, TYP.

O'BRIEN STREET

CURB STOPS

WILSON STREET

AWCUT
 AVENUE



PROPOSED BUILDING
 (1,129 SF.)
 F.F.E. = 123.0

TOTAL LOT AREA
 4,413 sq. ft.
 0.10 acres

TP-3

TP-2

5%

WET & C

121

BRICK SIDEWALK

BRICK SIDEWALK

X

X

X

X

X

X

X

△

△

△

△

△

△

N59°59'10"E

S30°08'53"E

S88°50'

S19°53'

S11°

49.98'

121.69'

122.44'

123.0'

118'

119'

120'

121'

122'

123'

124'

125'

126'

127'

5'

5'

5'

5'

5'

5'

5'

5'

5'

5'

5'

5'

5'

5'

8%

8%

8%

8%

8%

8%

8%

8%

8%

8%

8%

8%

8%

8%

8%

8%

8%

8%

8%

8%

8%

8%

8%

8%

8%

8%

8%

8%

LEGEND

EXISTING	DESCRIPTION
	PROPERTY/ROW
	MONUMENT
	IRON PIPE/ROD
	BUILDING
	WETLANDS
	EDGE WETLAND
	SIGN
	EDGE PAVEMENT
	CURBLINE
	TREELINE
	CONTOURS
	8" W
	8" S
	OVERHEAD ELEC. & TEL.
	UNDERGROUND ELEC. & TEL.
	GATE VALVE
	LIGHT POLE
	UTILITY POLE
	HYDRANT
	CATCH BASIN
	MANHOLE
	POTABLE WELL
	SPOT GRADE 30x20
	FENCE
	DECIDUOUS TREE
	CONIFEROUS TREE
	TP-1

NUMBER AND APPROX. LOCATION OF TEST PITS EXCAVATED BY CAMPOBASSO EXCAVATION, INC. ON MARCH 25, 2005

SILT FENCE
CONIFEROUS TREE
DECIDUOUS TREE

FENCE
SPOT GRADE
POTABLE WELL
MANHOLE
CATCH BASIN
HYDRANT
UTILITY POLE
LIGHT POLE
GATE VALVE

UNDERGROUND ELEC. & TEL.
OVERHEAD ELEC. & TEL.
SEWER
WATER
CONTOURS
TREELINE
CURBLINE
EDGE PAVEMENT

SIGN
EDGE WETLAND
WETLANDS
BUILDING
IRON PIPE/ROD
MONUMENT
PROPERTY/ROW

PROPOSED

SHEET 1 OF 1

DATE	3-31-05
SCALE	1"=10'

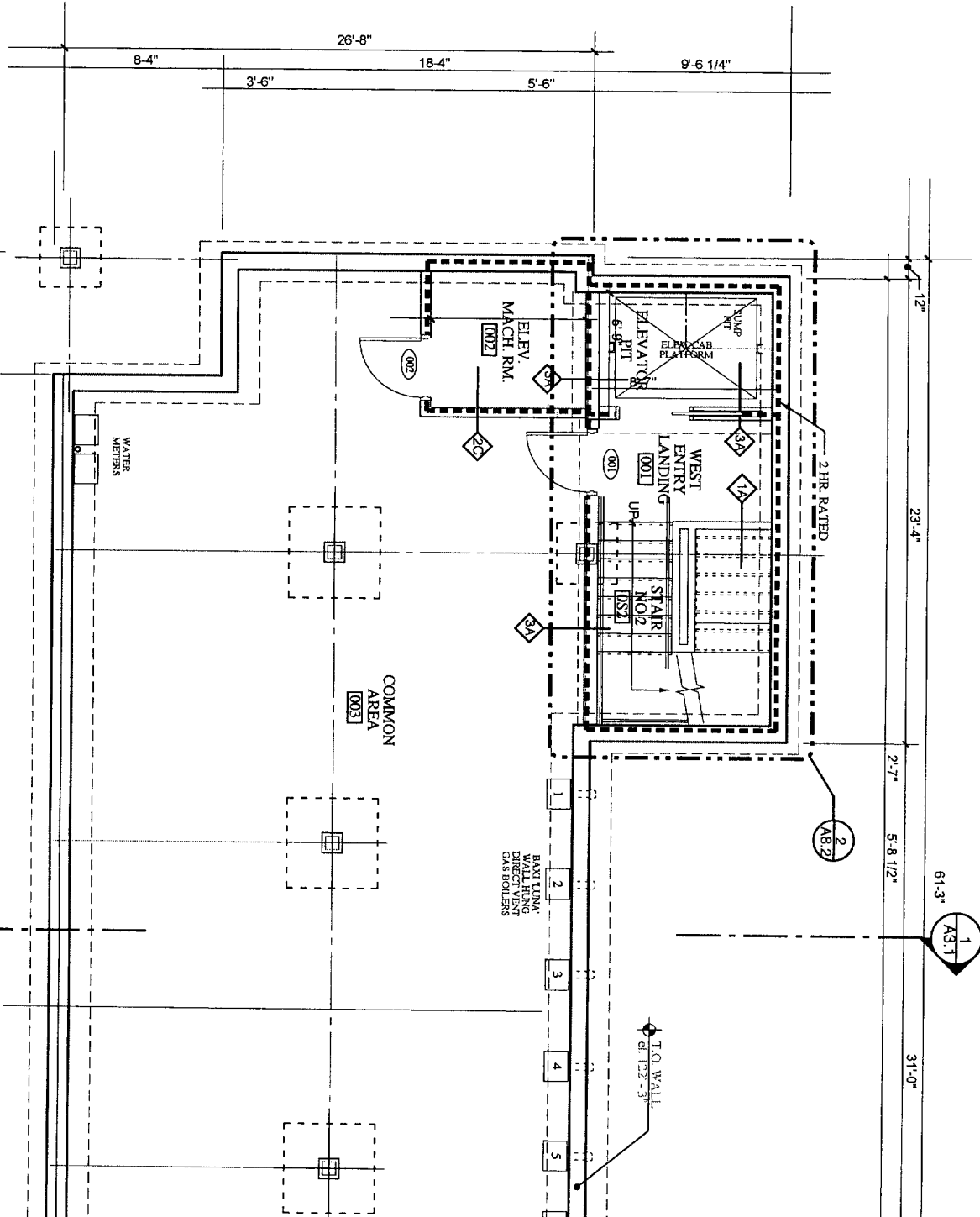
SITE & SUBSURFACE EXPLORATION PLAN
OF:
WILSON HEIGHTS CONDOMINIUMS
O'BRIEN & WILSON STREET
PORTLAND, MAINE
FOR:
FRANK D. GRONDIN BUILDERS, LLC
11A BARTLETT ROAD
GORHAM, ME 04038

Sebago Technics
Engineering Expertise You Can Build On
One Chabot Street
Westbrook, Me 04098-1339
Tel (207) 856-0277

PROJECT NO.	FIELD BOOK	DESIGN	CH
04008	ELECT	DDB	DD

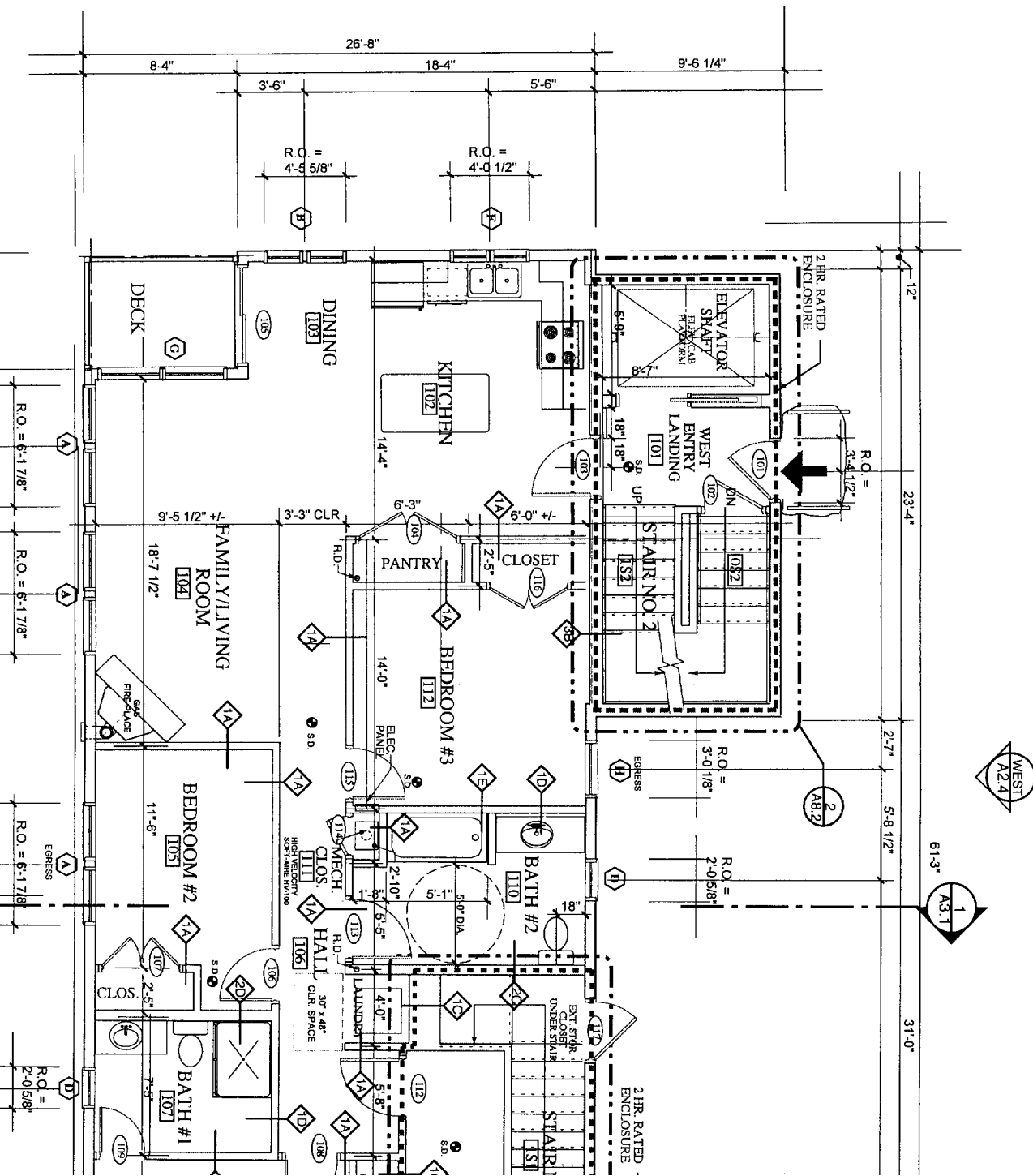
PARTITION TYPES

- 1A 2x4 w/ One layer 5/8" FIRE RATED
GWB EA. SIDE (NON-RATED)
- 1B 2x4 w/ One layer 5/8" FIRE RATED
GWB EA. SIDE (1 HOUR RATED)
UL Des U305
- 1C 2x4 w/ Two layers 5/8" FIRE RATED
GWB EA. SIDE (2 HOUR RATED)
UL Des U301
- 1D 2x4 w/ One layer 5/8" FIRE RATED
GWB ONE SIDE, MR GWB OTHER
SIDE
- 1E 2x4 w/ One layer 5/8" FIRE RATED
GWB ONE SIDE, CEMENT BD.
OTHER SIDE
- 2A 2x6 w/ One layer 5/8" FIRE RATED
GWB EA. SIDE (NON-RATED)
- 2B 2x6 w/ One layer 5/8" FIRE RATED
GWB EA. SIDE (1 HOUR RATED)
- 2C 2x6 w/ Two layers 5/8" FIRE RATED
GWB EA. SIDE (2 HOUR RATED)
UL Des U334
- 2D 2x6 w/ One layer 5/8" FIRE RATED
GWB ONE SIDE, MR GWB OTHER
SIDE
- 2E 2x6 w/ One layer 5/8" FIRE RATED
GWB ONE SIDE, CEMENT BD.
OTHER SIDE
- 3A 7 5/8" CMU Block, (2 HOUR RATED)
- 3B 7 5/8" CMU Block, 2x4 furring one
side w/ 5/8" GWB (2 HOUR RATED)



PARTITION TYPES

- 1A 2x4 w/ One layer 5/8" FIRE RATED
GWB EA. SIDE (NON-RATED)
- 1B 2x4 w/ One layer 5/8" FIRE RATED
GWB EA. SIDE (1 HOUR RATED)
UL Des U305
- 1C 2x4 w/ Two layers 5/8" FIRE RATED
GWB EA. SIDE (2 HOUR RATED)
UL Des U307
- 1D 2x4 w/ One layer 5/8" FIRE RATED
GWB ONE SIDE, MR GWB OTHER
SIDE
- 1E 2x4 w/ One layer 5/8" FIRE RATED
GWB ONE SIDE, CEMENT BD.
OTHER SIDE
- 2A 2x6 w/ One layer 5/8" FIRE RATED
GWB EA. SIDE (NON-RATED)
- 2B 2x6 w/ One layer 5/8" FIRE RATED
GWB EA. SIDE (1 HOUR RATED)
- 2C 2x6 w/ Two layers 5/8" FIRE RATED
GWB EA. SIDE (2 HOUR RATED)
UL Des U334
- 2D 2x6 w/ One layer 5/8" FIRE RATED
GWB ONE SIDE, MR GWB OTHER
SIDE
- 2E 2x6 w/ One layer 5/8" FIRE RATED
GWB ONE SIDE, CEMENT BD.
OTHER SIDE
- 3A 7 5/8" CMU Block, (2 HOUR RATED)
- 3B 7 5/8" CMU Block, 2x4 furring one
side w/ 5/8" GWB (2 HOUR RATED)



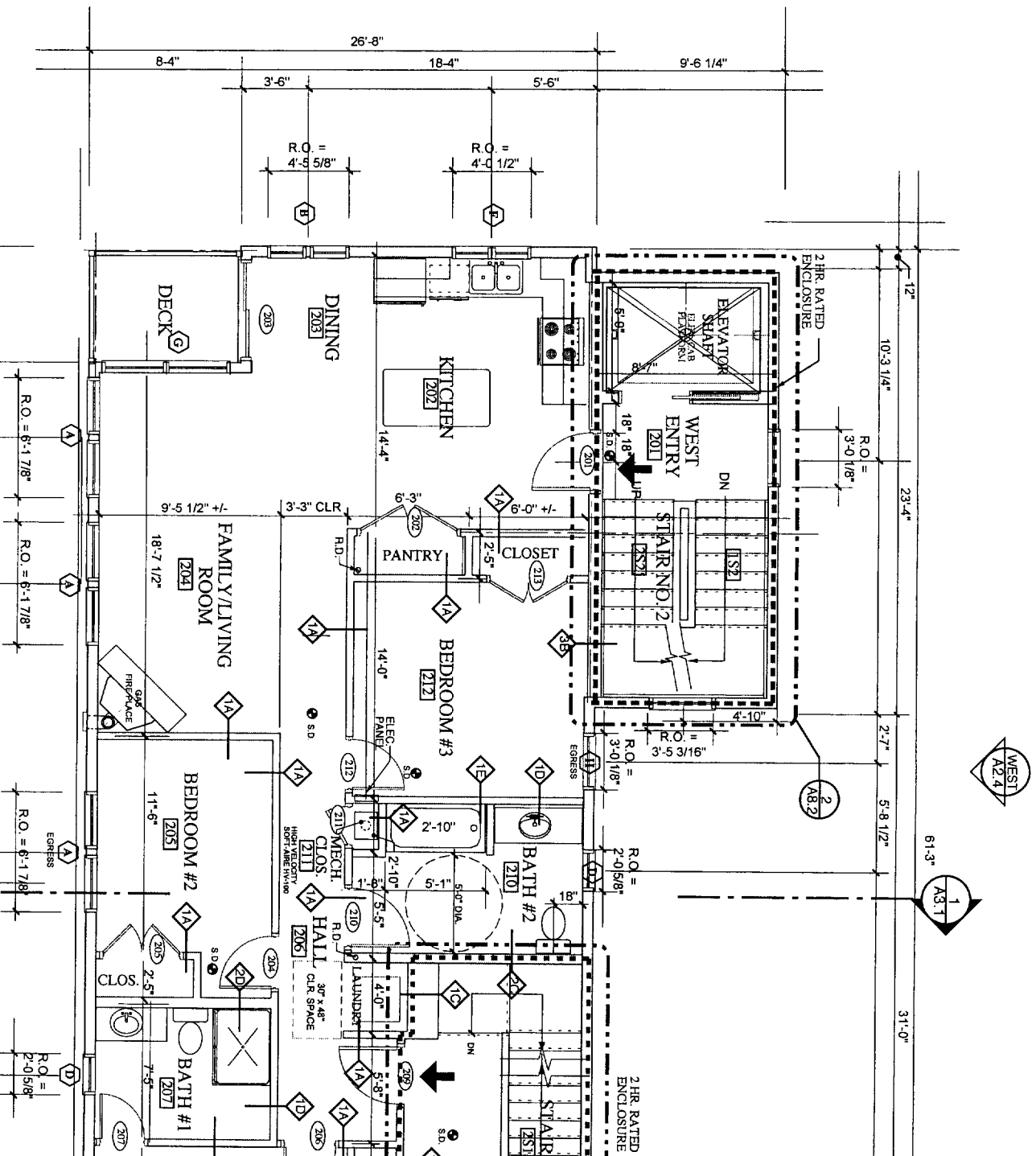
WINDOW SCHEDULE

PARTITION TYPES

- 1A 2x4 w/ One layer 5/8" FIRE RATED GWB EA. SIDE (NON-RATED)
- 1B 2x4 w/ One layer 5/8" FIRE RATED GWB EA. SIDE (1 HOUR RATED) U/L Des U305
- 1C 2x4 w/ Two layers 5/8" FIRE RATED GWB EA. SIDE (2 HOUR RATED) U/L Des U307
- 1D 2x4 w/ One layer 5/8" FIRE RATED GWB ONE SIDE, MR GWB OTHER SIDE
- 1E 2x4 w/ One layer 5/8" FIRE RATED GWB EA. SIDE, CEMENT BD, OTHER SIDE
- 2A 2x6 w/ One layer 5/8" FIRE RATED GWB EA. SIDE (NON-RATED)
- 2B 2x6 w/ One layer 5/8" FIRE RATED GWB EA. SIDE (1 HOUR RATED)
- 2C 2x6 w/ Two layers 5/8" FIRE RATED GWB EA. SIDE (2 HOUR RATED) U/L Des U334
- 2D 2x6 w/ One layer 5/8" FIRE RATED GWB ONE SIDE, MR GWB OTHER SIDE
- 2E 2x6 w/ One layer 5/8" FIRE RATED GWB ONE SIDE, CEMENT BD, OTHER SIDE
- 3A 7 5/8" CMU Block, (2 HOUR RATED)
- 3B 7 5/8" CMU Block, 2x4 furring one side w/ 5/8" GWB (2 HOUR RATED)

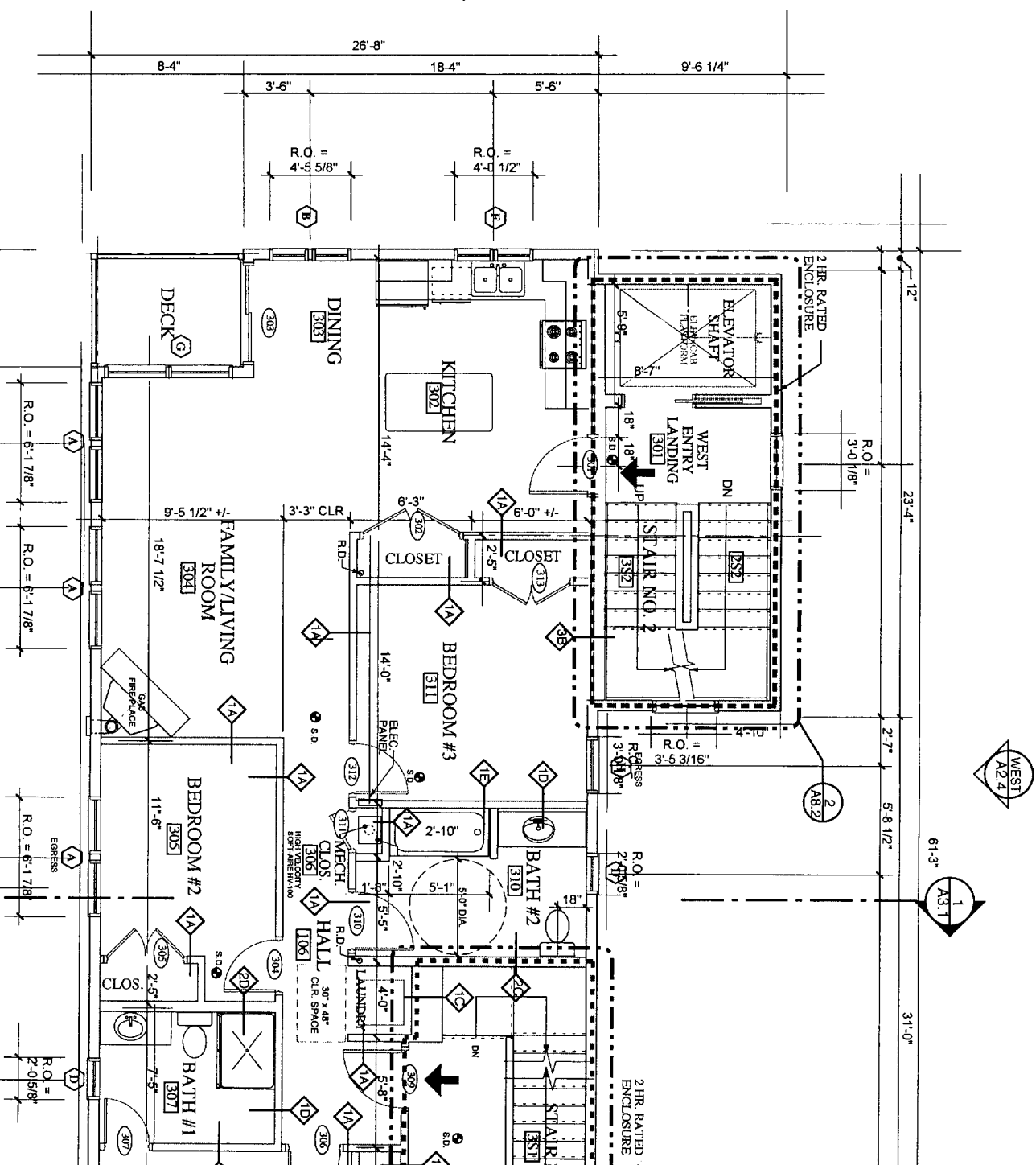


WINDOW SCHEDULE



PARTITION TYPES

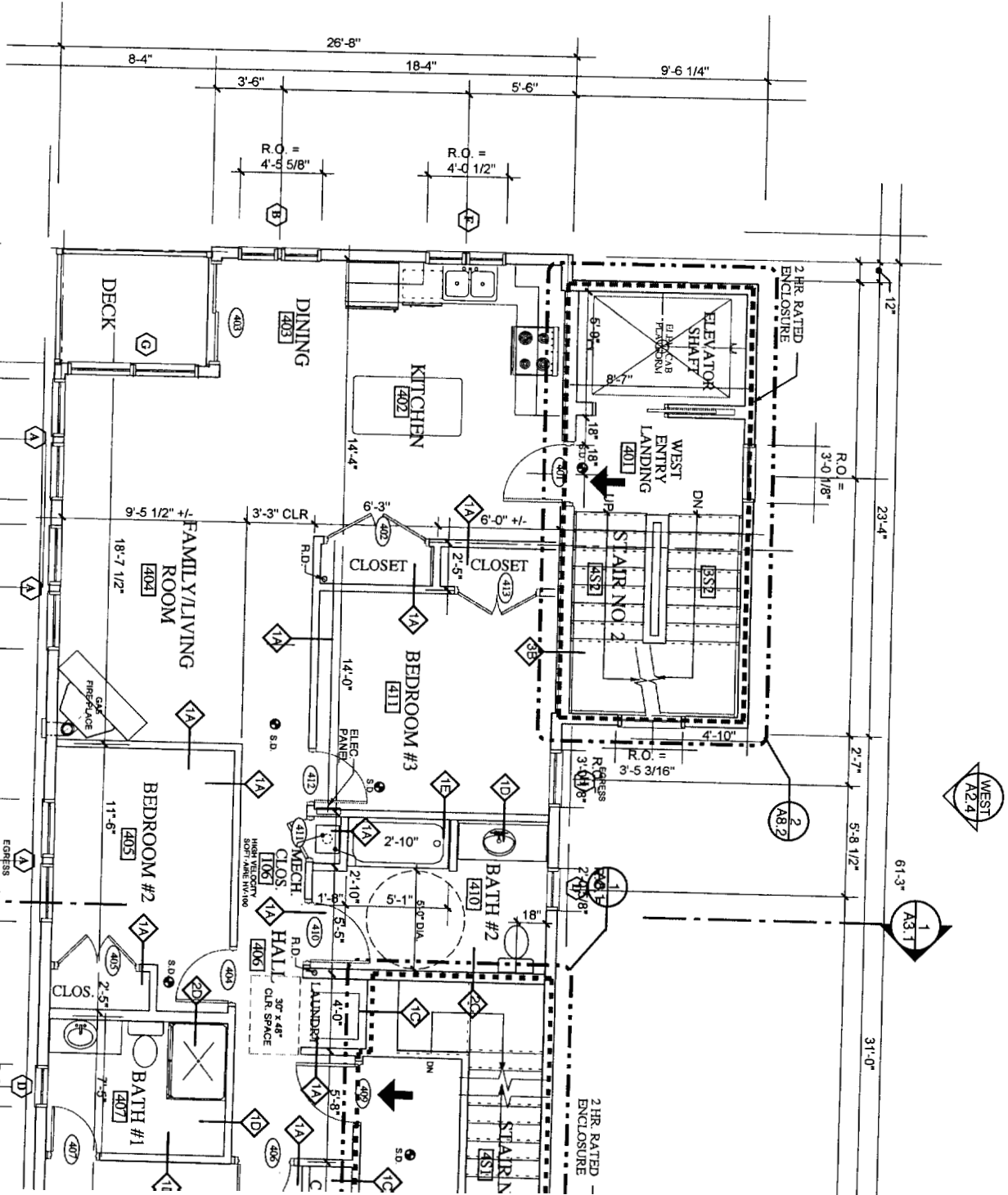
- 1A 2x4 w/ One layer 5/8" FIRE RATED
GWB EA. SIDE (NON-RATED)
- 1B 2x4 w/ One layer 5/8" FIRE RATED
GWB EA. SIDE (1 HOUR RATED)
UL Des U305
- 1C 2x4 w/ Two layers 5/8" FIRE RATED
GWB EA. SIDE (2 HOUR RATED)
UL Des U307
- 1D 2x4 w/ One layer 5/8" FIRE RATED
GWB ONE SIDE, MR GWB OTHER
SIDE
- 1E 2x4 w/ One layer 5/8" FIRE RATED
GWB ONE SIDE, CEMENT BD.
OTHER SIDE
- 2A 2x6 w/ One layer 5/8" FIRE RATED
GWB EA. SIDE (NON-RATED)
- 2B 2x6 w/ One layer 5/8" FIRE RATED
GWB EA. SIDE (1 HOUR RATED)
- 2C 2x6 w/ Two layers 5/8" FIRE RATED
GWB EA. SIDE (2 HOUR RATED)
UL Des U334
- 2D 2x6 w/ One layer 5/8" FIRE RATED
GWB ONE SIDE, MR GWB OTHER
SIDE
- 2E 2x6 w/ One layer 5/8" FIRE RATED
GWB ONE SIDE, CEMENT BD,
OTHER SIDE
- 3A 7 5/8" CMU Block, (2 HOUR RATED)
- 3B 7 5/8" CMU Block, 2x4 furring one
side w/ 5/8" GWB (2 HOUR RATED)



WINDOW SCHEDULE

PARTITION TYPES

- 1A 2x4 w/ One layer 5/8" FIRE RATED
GWB EA. SIDE (NON-RATED)
- 1B 2x4 w/ One layer 5/8" FIRE RATED
GWB EA. SIDE (1 HOUR RATED)
UL Des U305
- 1C 2x4 w/ Two layers 5/8" FIRE RATED
GWB EA. SIDE (2 HOUR RATED)
UL Des U307
- 1D 2x4 w/ One layer 5/8" FIRE RATED
GWB ONE SIDE; MR GWB OTHER
SIDE
- 1E 2x4 w/ One layer 5/8" FIRE RATED
GWB ONE SIDE; CEMENT BD.
OTHER SIDE
- 2A 2x6 w/ One layer 5/8" FIRE RATED
GWB EA. SIDE (NON-RATED)
- 2B 2x6 w/ One layer 5/8" FIRE RATED
GWB EA. SIDE (1 HOUR RATED)
- 2C 2x6 w/ Two layers 5/8" FIRE RATED
GWB EA. SIDE (2 HOUR RATED)
UL Des U334
- 2D 2x6 w/ One layer 5/8" FIRE RATED
GWB ONE SIDE; MR GWB OTHER
SIDE
- 2E 2x6 w/ One layer 5/8" FIRE RATED
GWB ONE SIDE; CEMENT BD.
OTHER SIDE
- 3A 7 5/8" CMU Block, (2 HOUR RATED)
- 3B 7 5/8" CMU Block, 2x4 furring one
side w/ 5/8" GWB (2 HOUR RATED)

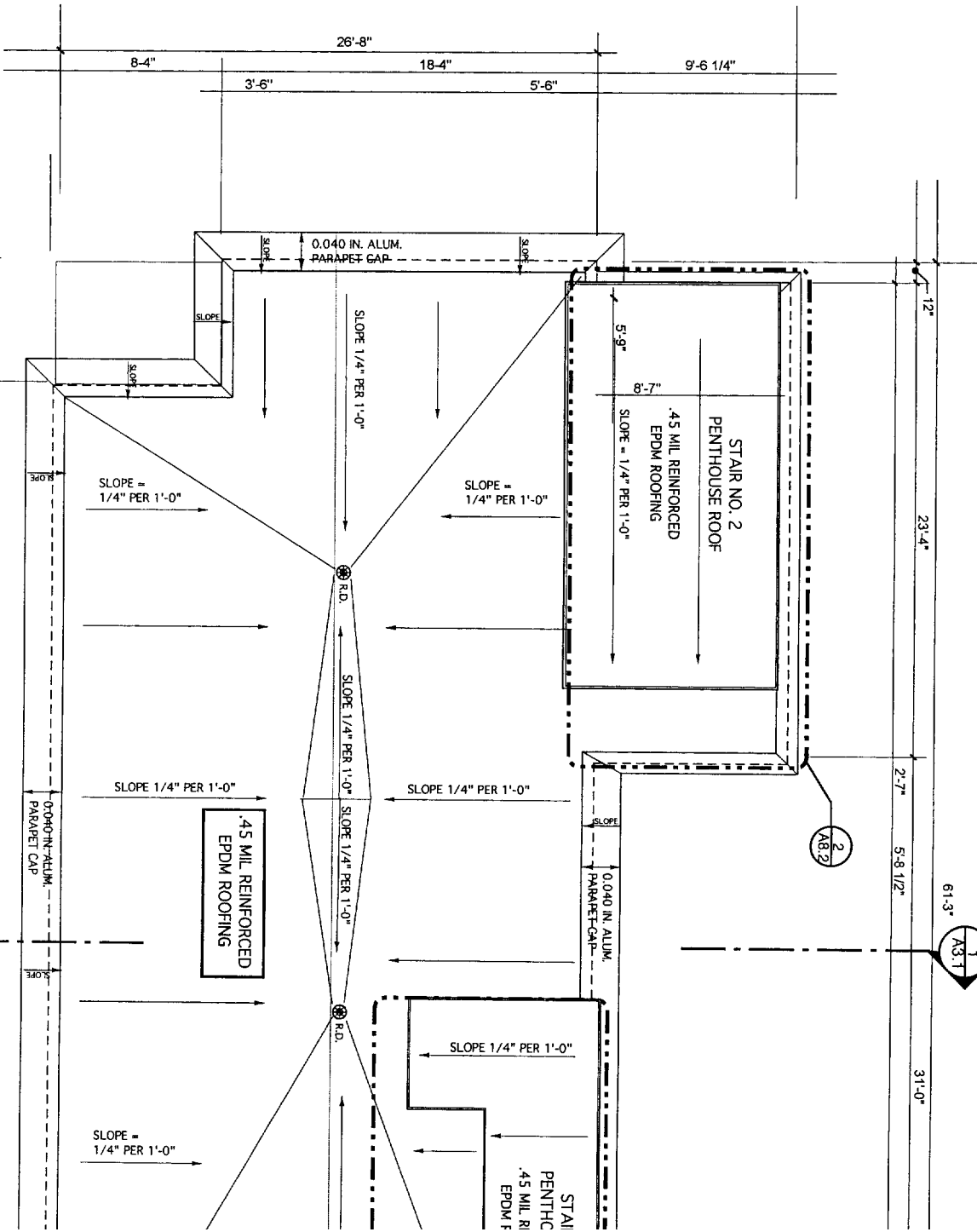


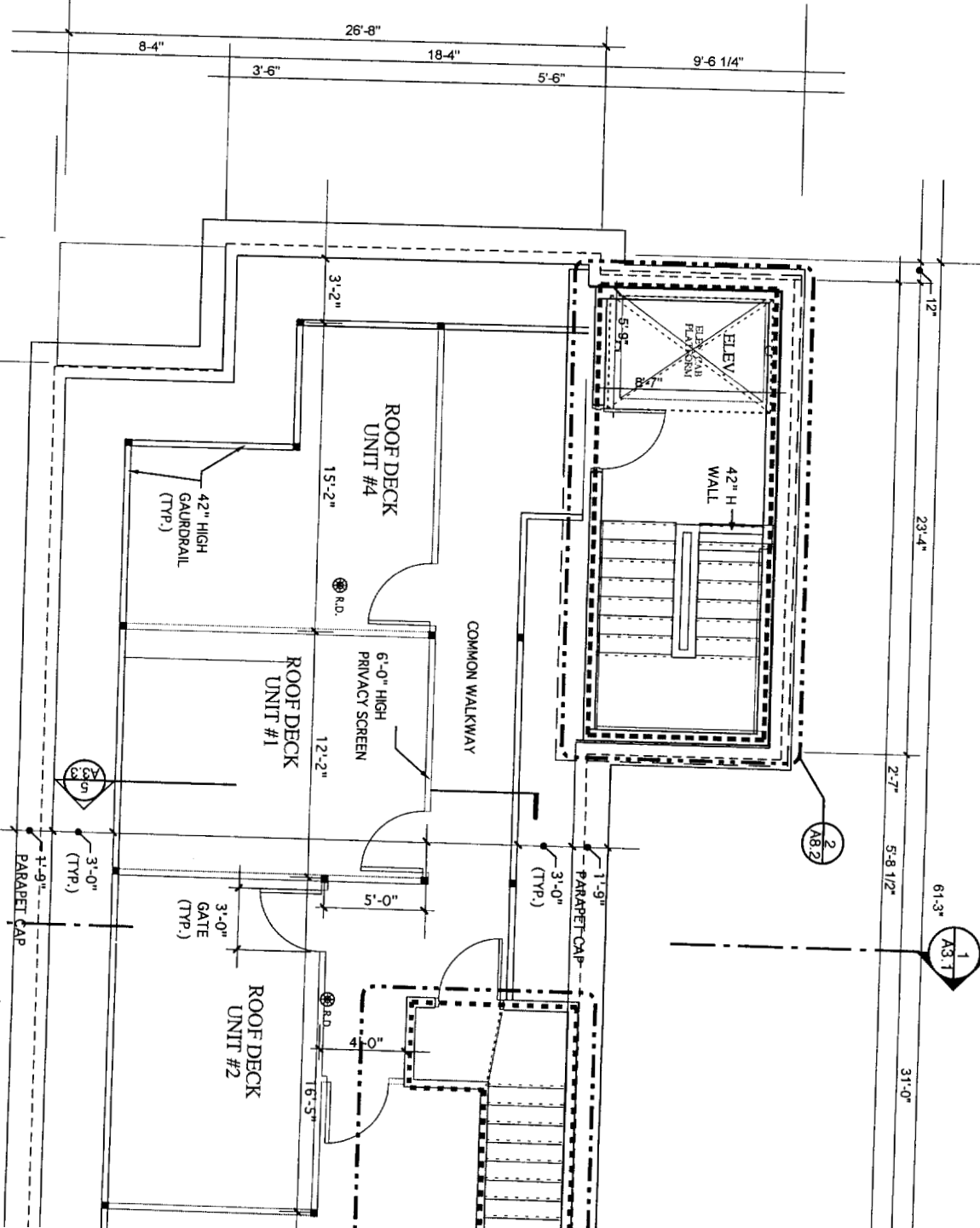
WINDOW SCHEDULE

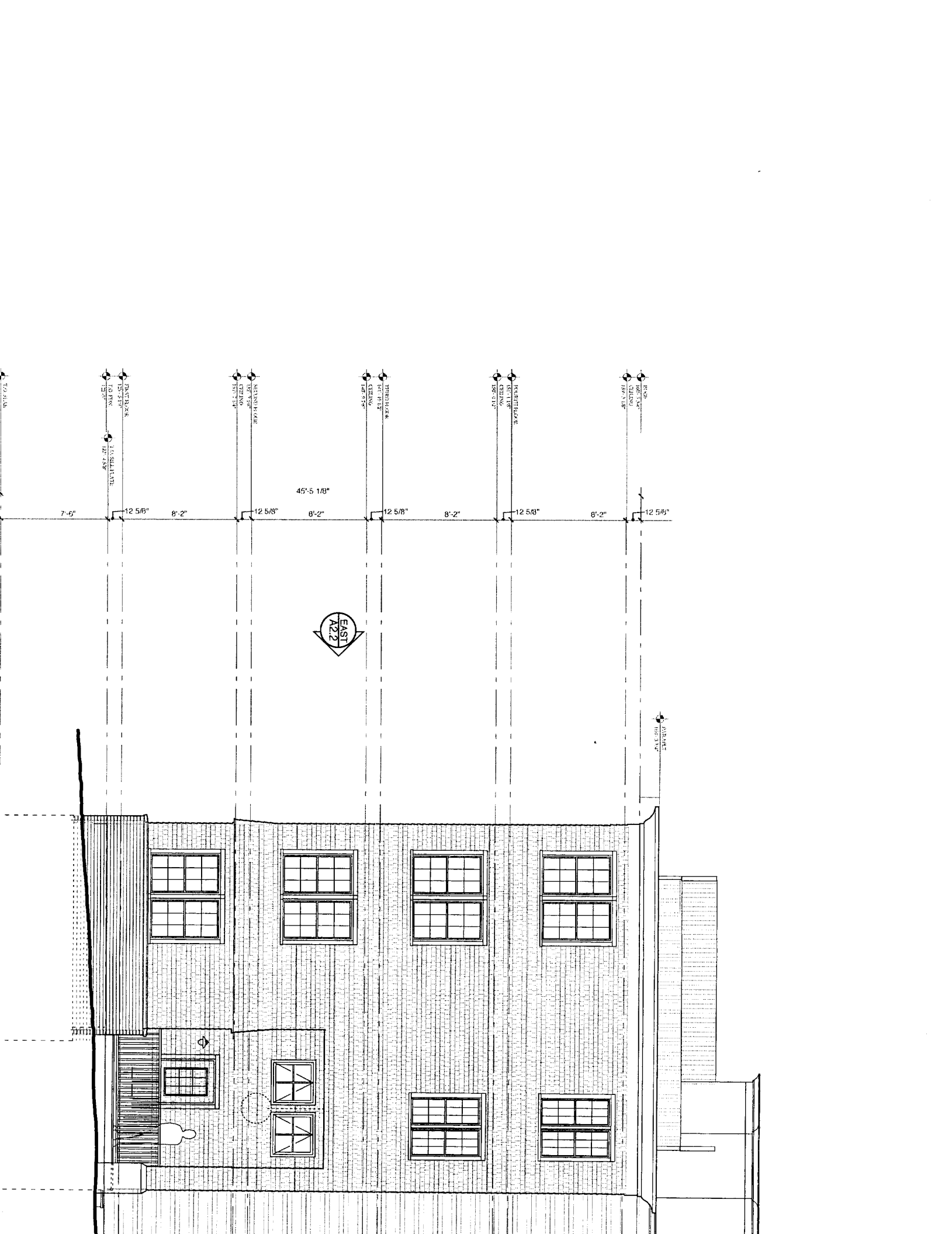
Symbol

Model #

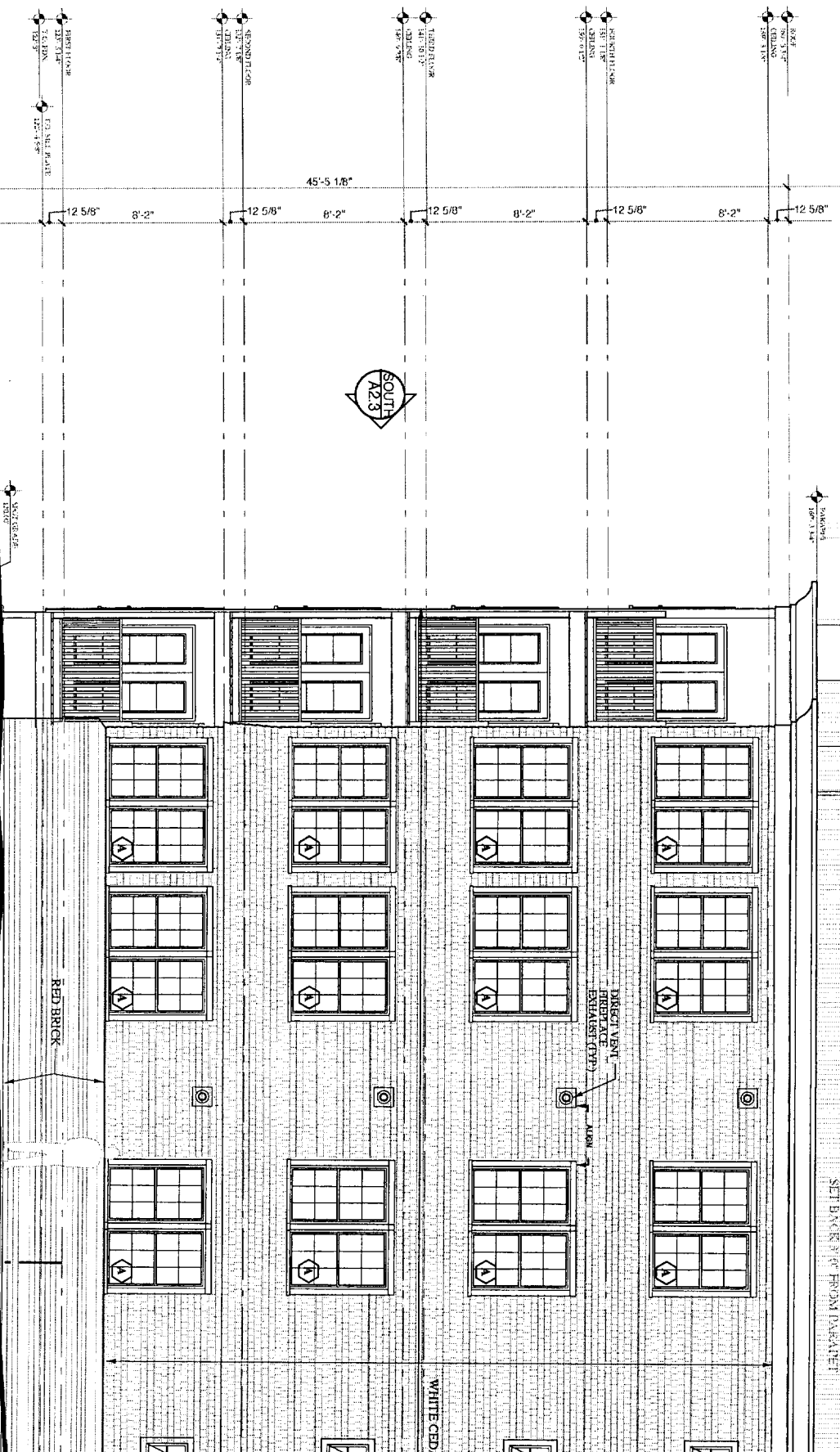
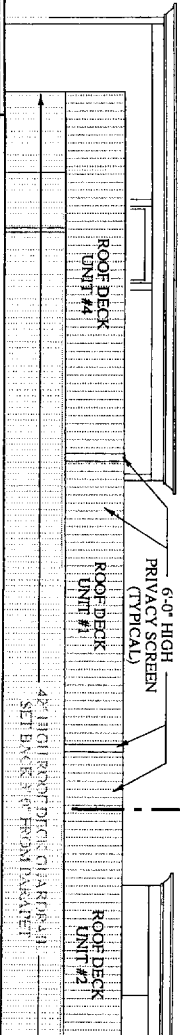
Finish Appearance / U / V / L1



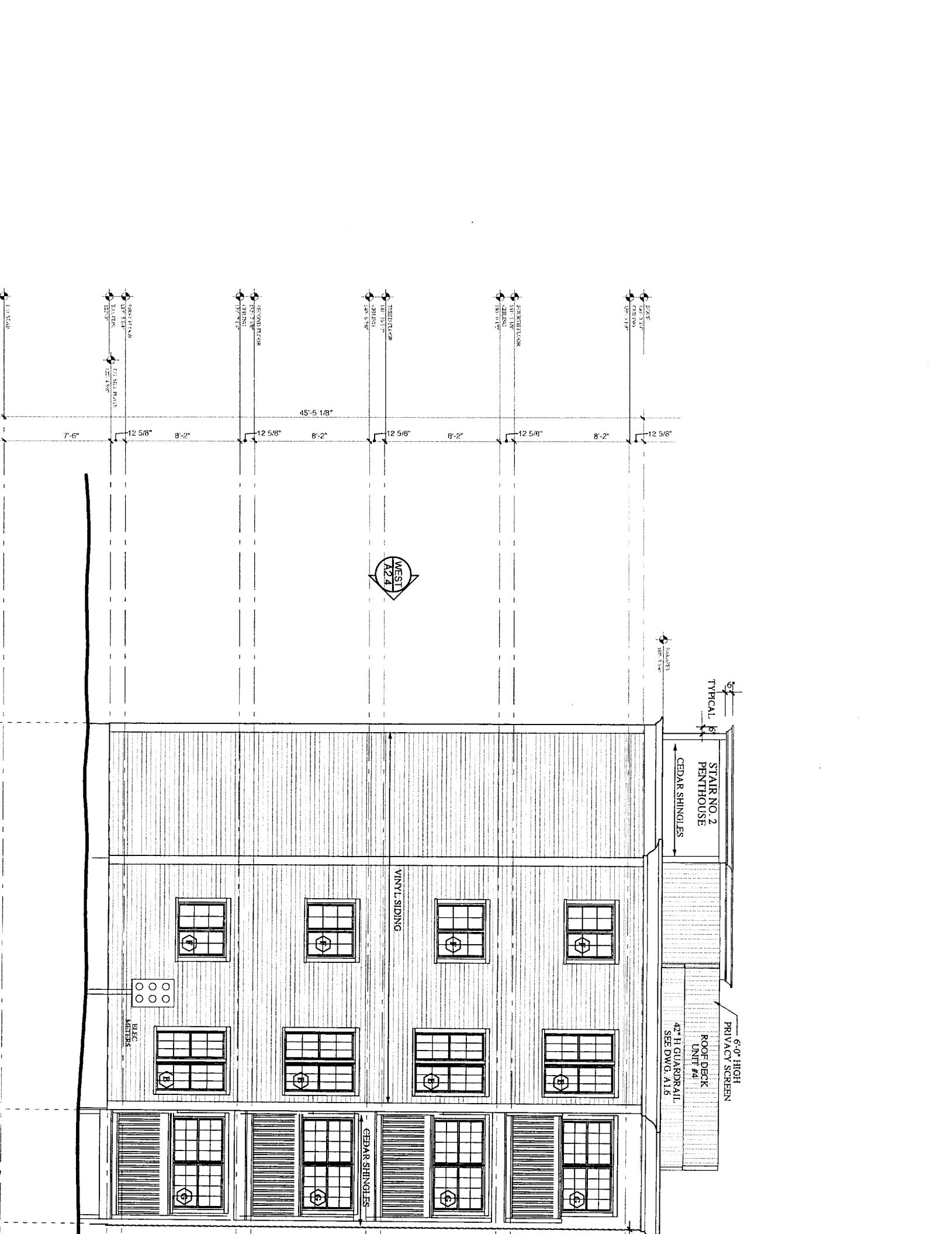




STAIR NO. 2
PENTHOUSE



1
A3.1



WEST
A2.4

TYPICAL
S
E
W
N

STAIR NO. 2
PENTHOUSE
CEDAR SHINGLES

6'-0" HIGH
PRIVACY SCREEN

ROOF DECK
UNIT #4

42" H GUARDRAIL
SEE DWG. A1.6

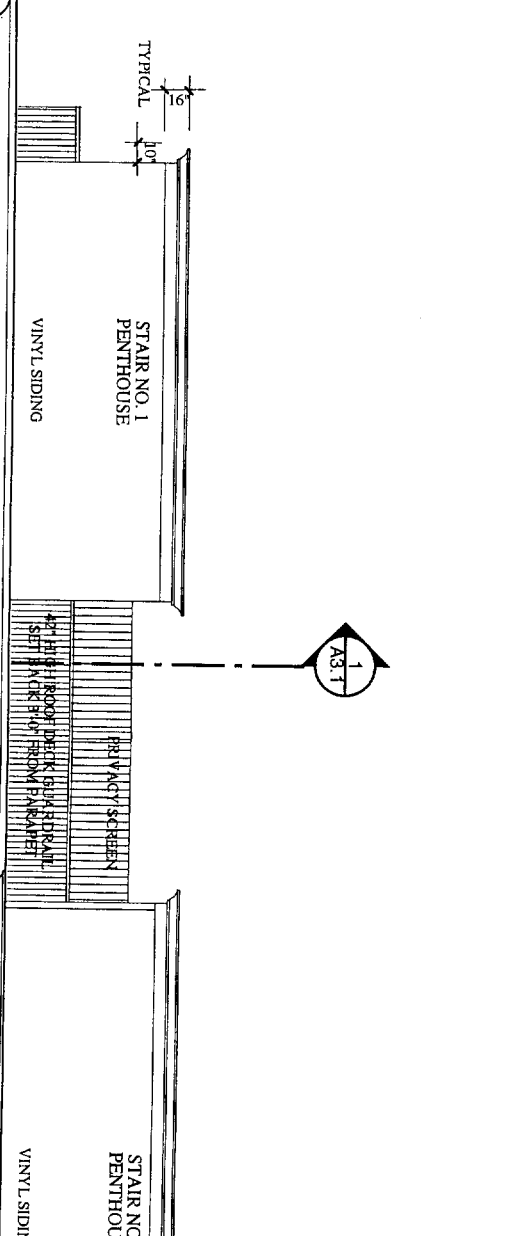
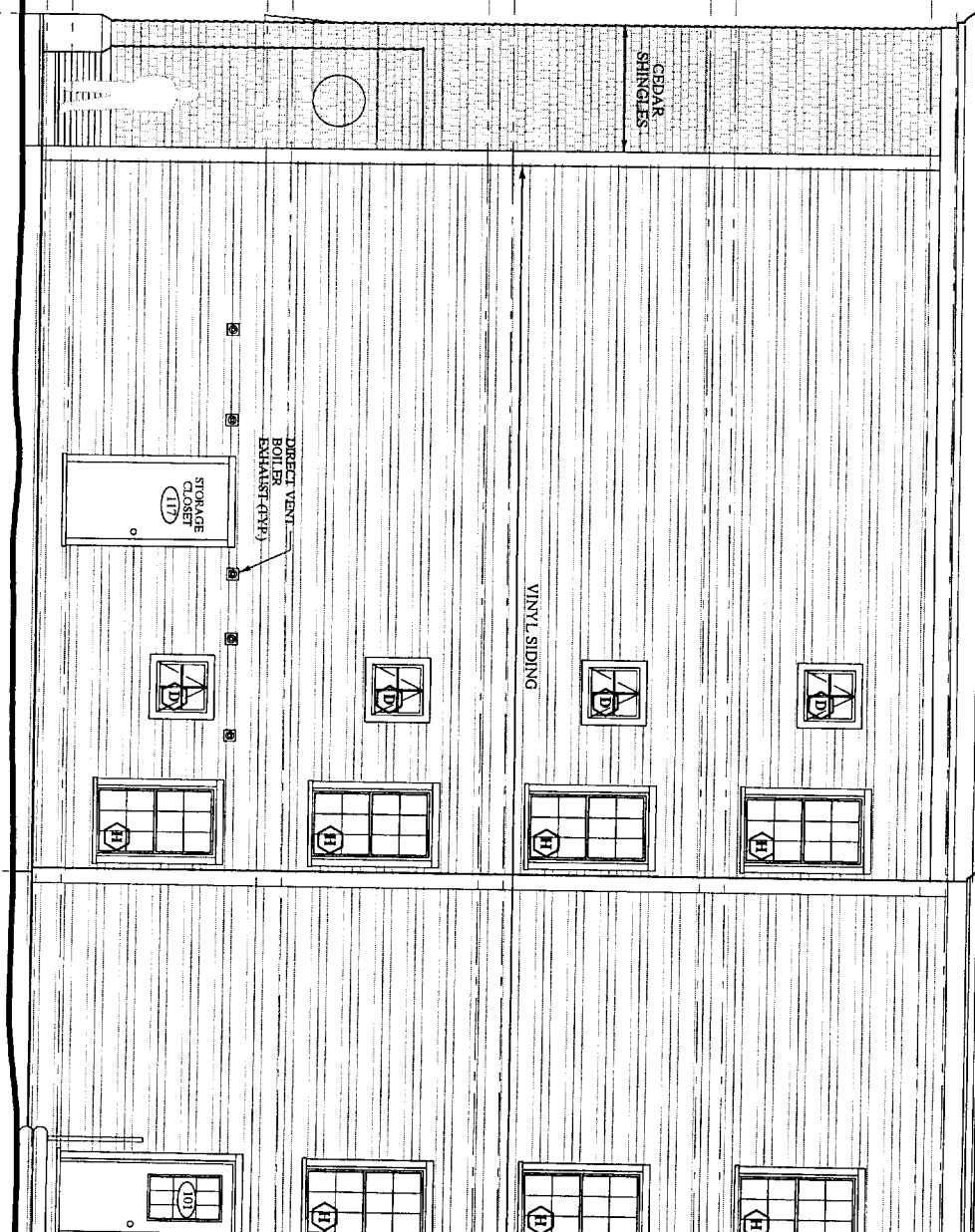
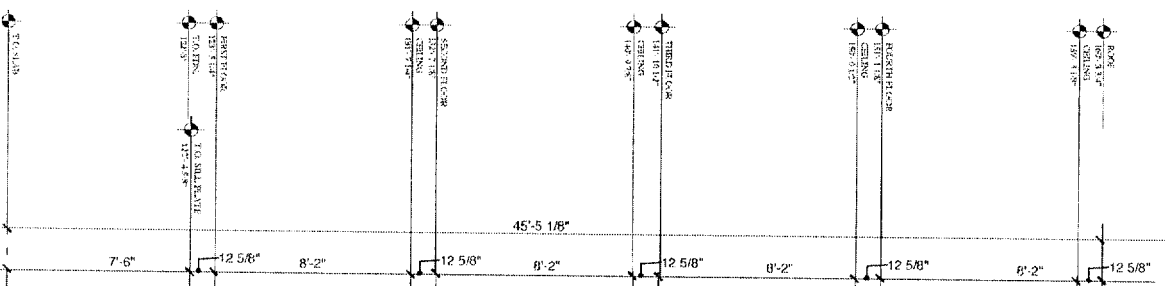
VINYL SIDING

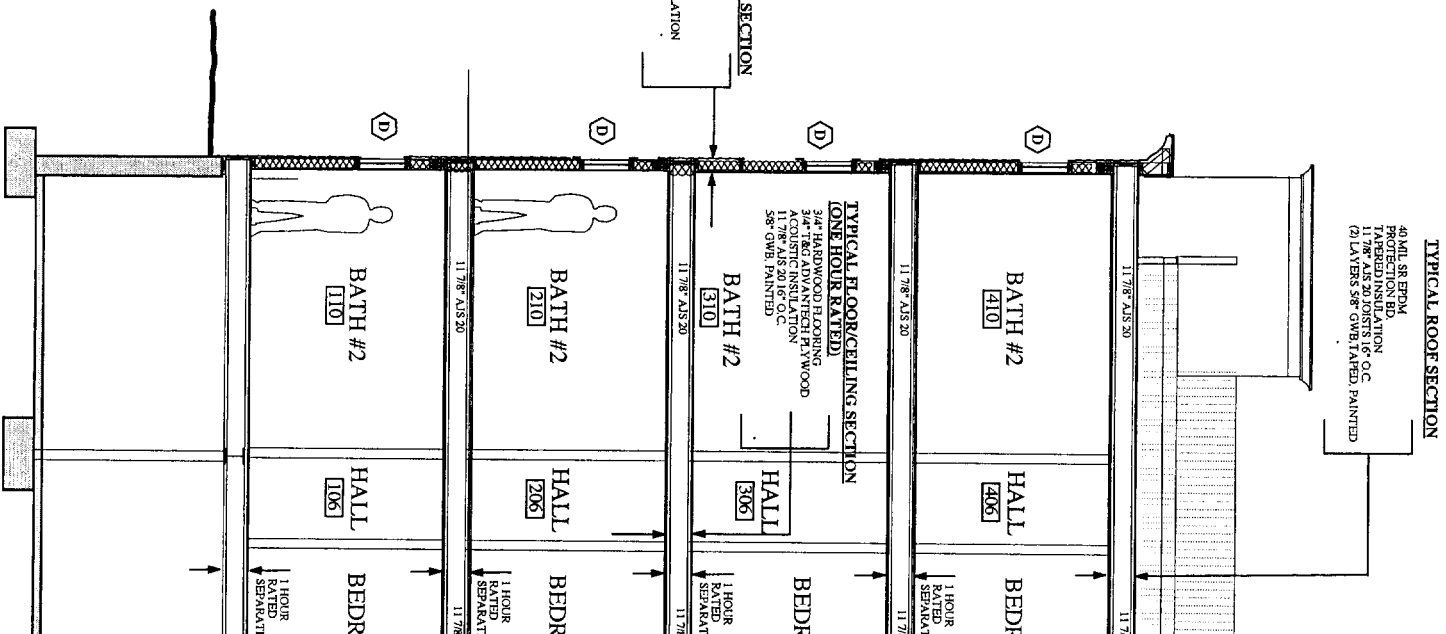
CEGAR SHINGLES

ELEC
METERS

45'-5 1/8"

7'-6" 12 5/8" 8'-2" 12 5/8" 8'-2" 12 5/8" 8'-2" 12 5/8" 8'-2" 12 5/8"

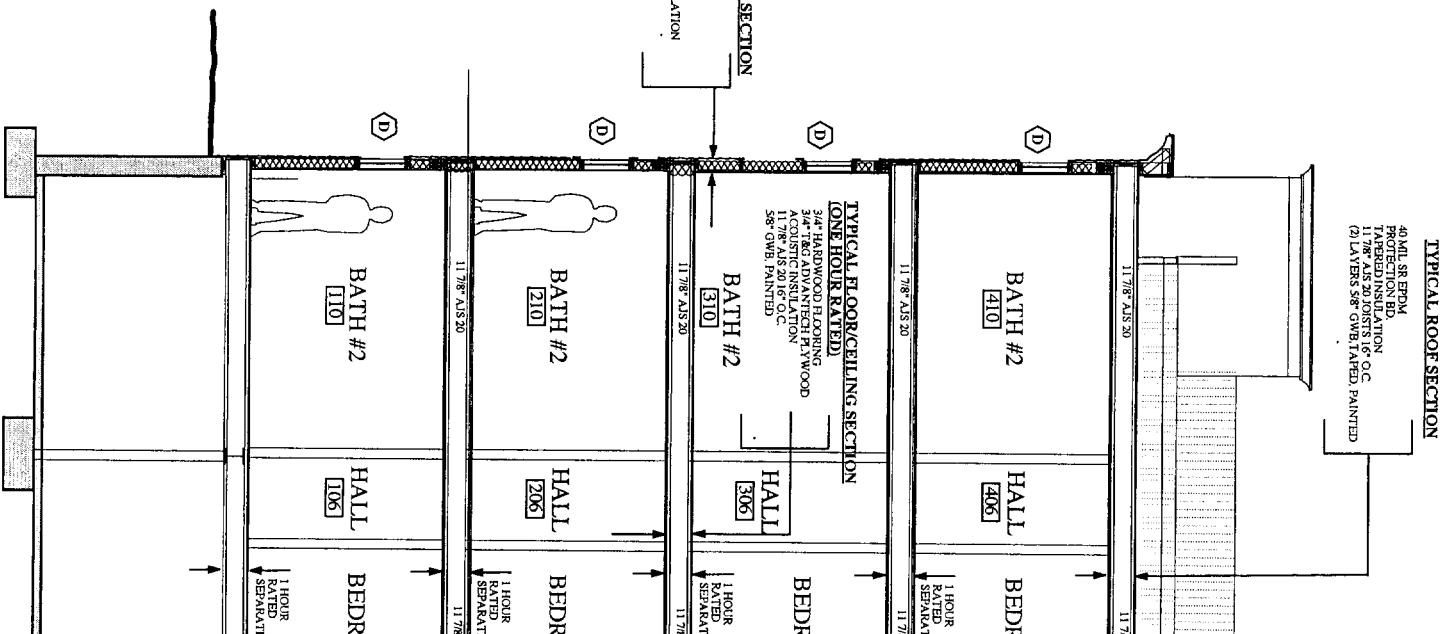


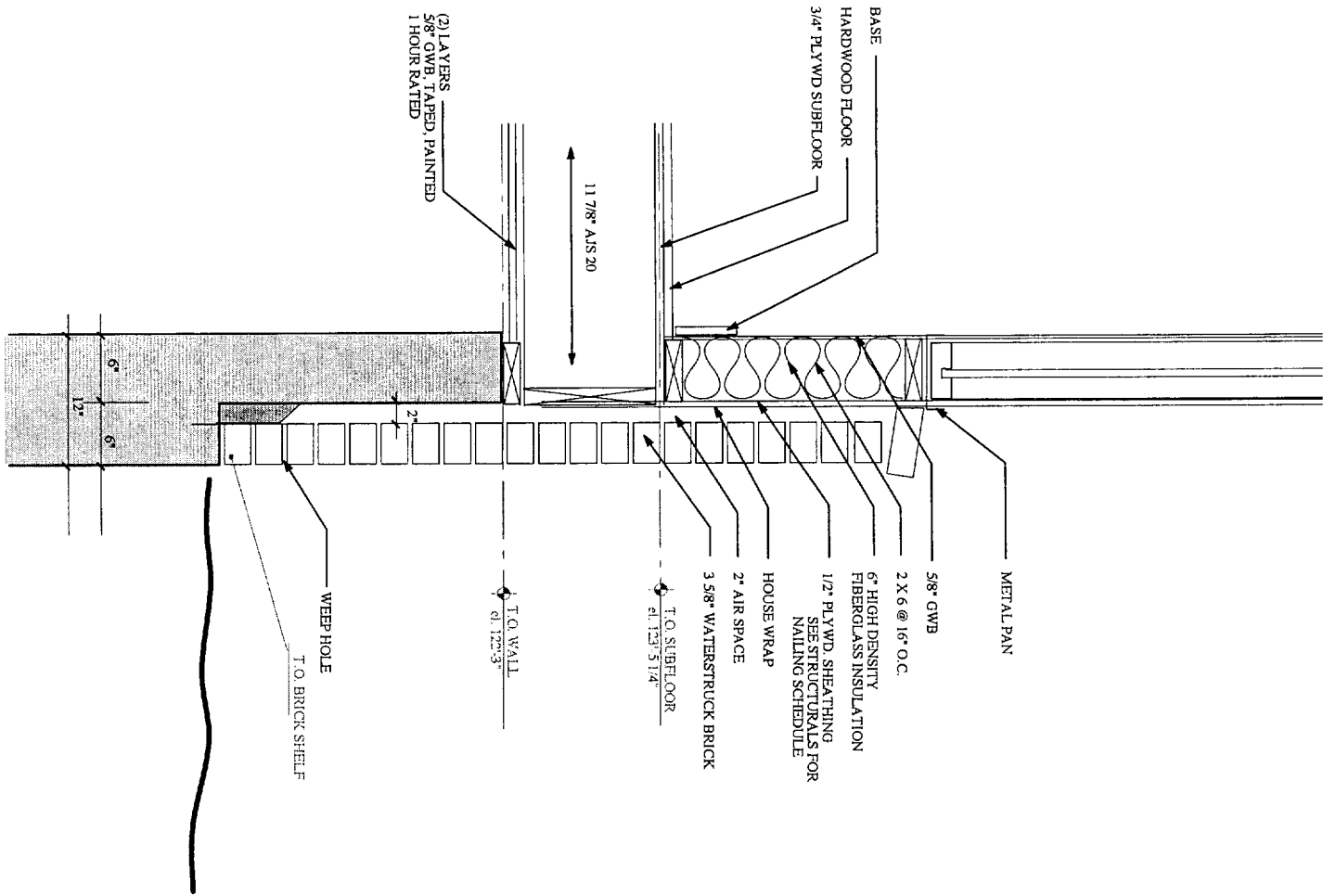


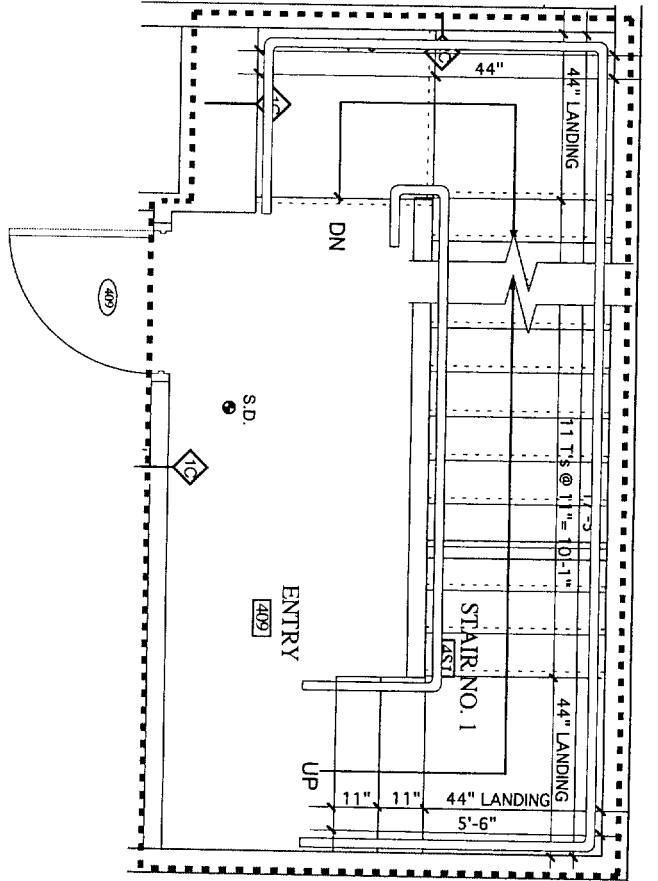
TYPICAL ROOF SECTION
 40 MIL SR EPDM PROTECTION BD.
 TAPERED INSULATION
 12 IN. AFS 20 CONS 16" O.C.
 (9) LAYERS 58" GWB, PAINTED

TYPICAL WALL SECTION
 VINYL SIDING
 1/2" Gypsum Board
 5/8" CON. PLYWOOD
 2x6 STUDS @ 16" O.C.
 6" TH. HIGH DENSITY FIBERGLASS INSULATION
 5/8" GWB, PAINTED
 1/2" ANCHOR BARRIER

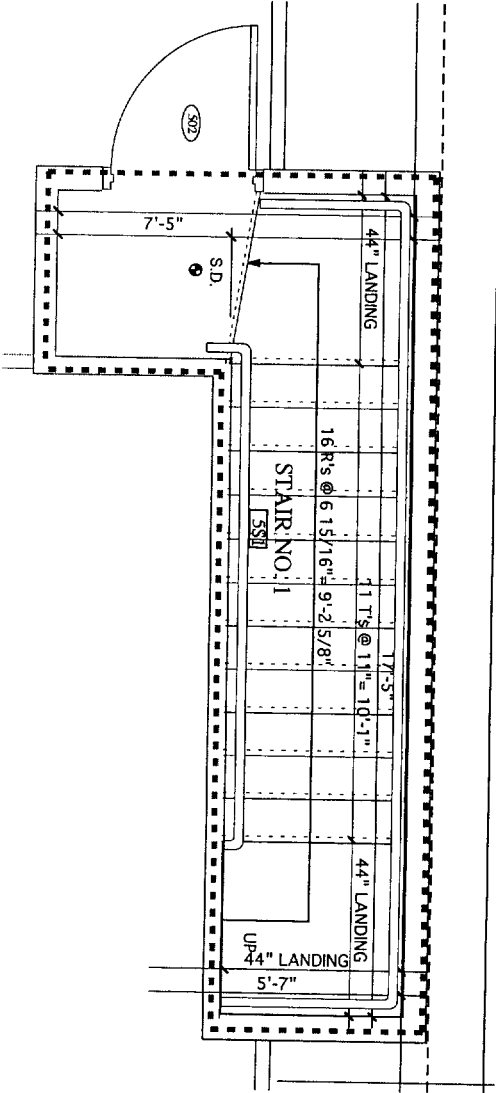
TYPICAL FLOOR/CEILING SECTION (ONE HOUR RATED)
 3/4" HARDWOOD FLOORING
 3/4" TRG. ADV. ANCHR PLYWOOD
 11/78" AFS 20 16" O.C.
 58" GWB, PAINTED



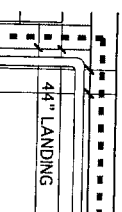
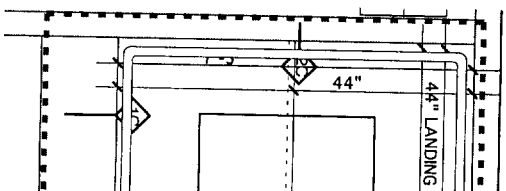
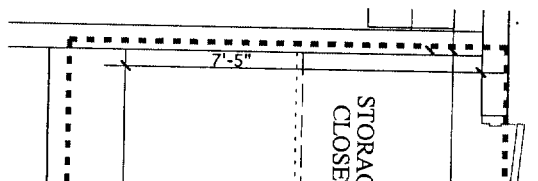


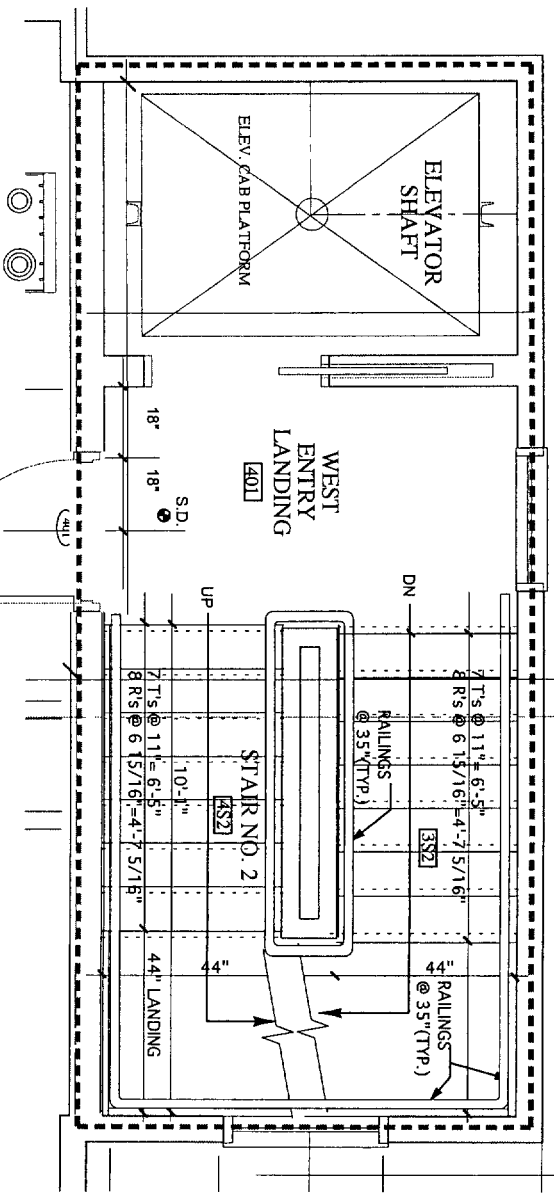


4 STAIR NO. 1 - FOURTH FLOOR
SCALE: 1/2" = 1'-0"

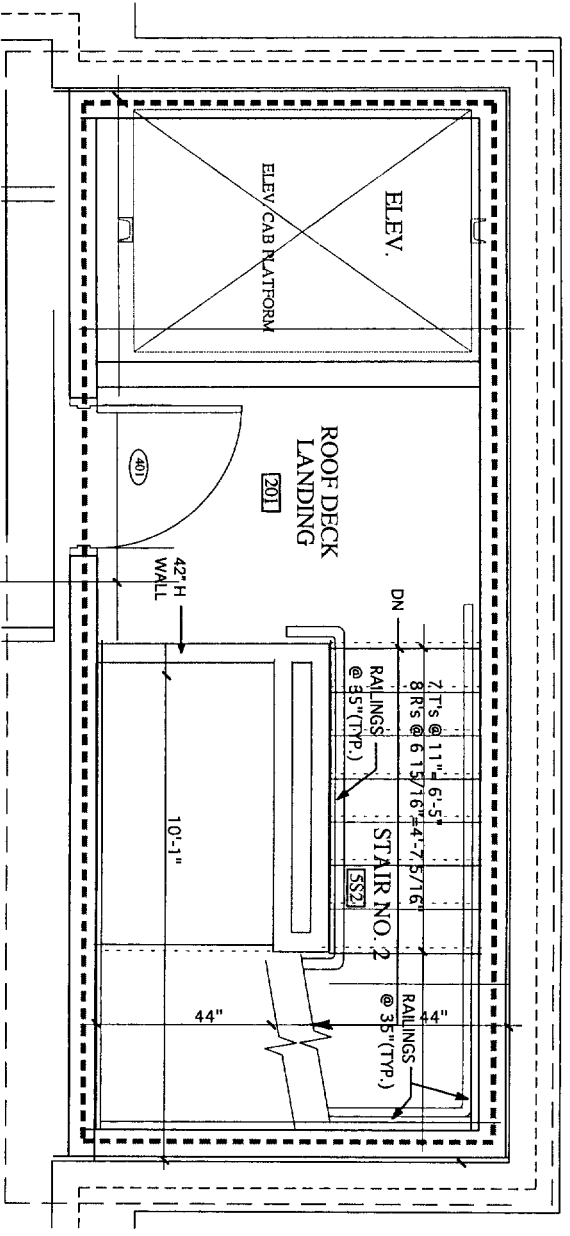


5 STAIR NO. 1 - ROOF LEVEL
SCALE: 1/2" = 1'-0"





4 STAIR NO. 2 - FOURTH FLOOR
SCALE: 1/2" = 1'-0"



5 STAIR NO. 2 - ROOF LEVEL
SCALE: 1/2" = 1'-0"

