



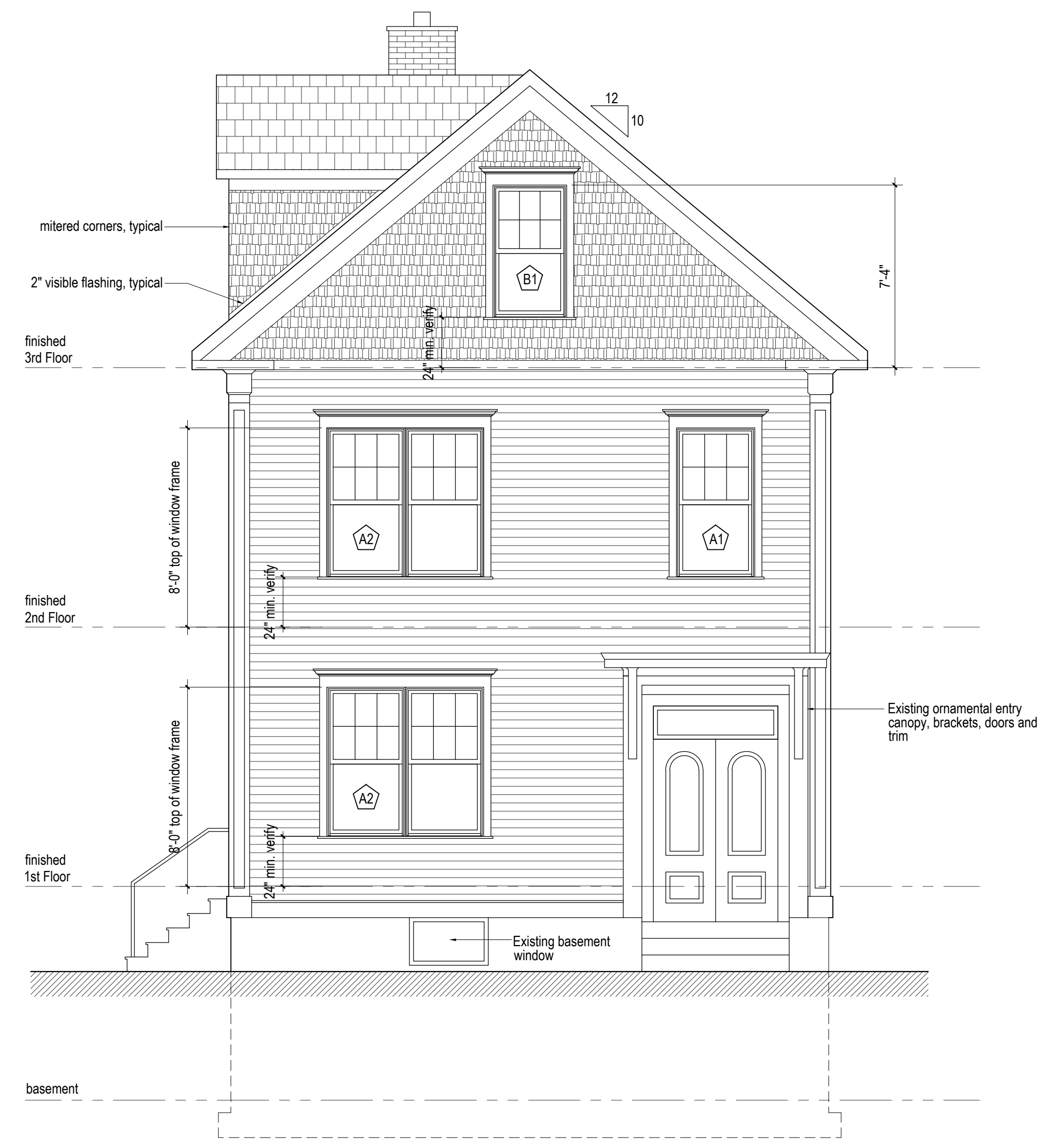
Window & Exterior Door Schedule

Mark	Designation	Operation	Unit Dimension	Rough Opening	Notes
A	ITDH 3872	Double Hung	3 - 1½ x 5 - 11¼	by contractor	Egress Window
B	ITDH 3664	Double Hung	2 - 11½ x 5 - 3¼	by contractor	Egress Window
C	ICA 2959	Casement	2 - 4 x 4 - 11½	by contractor	Egress Window
D	ICA 3755	Casement	3 - 0 x 4 - 7½	by contractor	note 4
E			6' x 8' nom.	patio or slider	
F	ITDH 3468	Double Hung	2 - 9½ x 5 - 7¼	by contractor	Egress Window
G	ITDH 3456	Double Hung	2 - 9½ x 4 - 7¼	by contractor	
H	ITDH 3050	Double Hung	2 - 5½ x 4 - 11¼	by contractor	
I	ICAP2927	Awning	2 - 4 x 2 - 3½	by contractor	window at stair hall
J	ITDH3472	Double Hung	2 - 9½ x 5 - 11¼	by contractor	
K	ICAP3727	Awning	3 - 0 x 2 - 3½*	by contractor	
L			3 - 0 x 6 - 8 nom	by contractor	
M			3 - 0 x 7 - 0 nom	by contractor	

Notes:
 1. Window Designations are for Marvin Integrity Ultrex with Wood Interior
 2. Doors to be determined
 3. A1 shall be a single unit of A window. A2 shall be (2) A units mullied together. And so on...
 4. Coordinate sill with backslash at counter



2 South (side) Exterior Elevation:
1/4" = 1'-0"



1 East (front) Exterior Elevation:
1/4" = 1'-0"