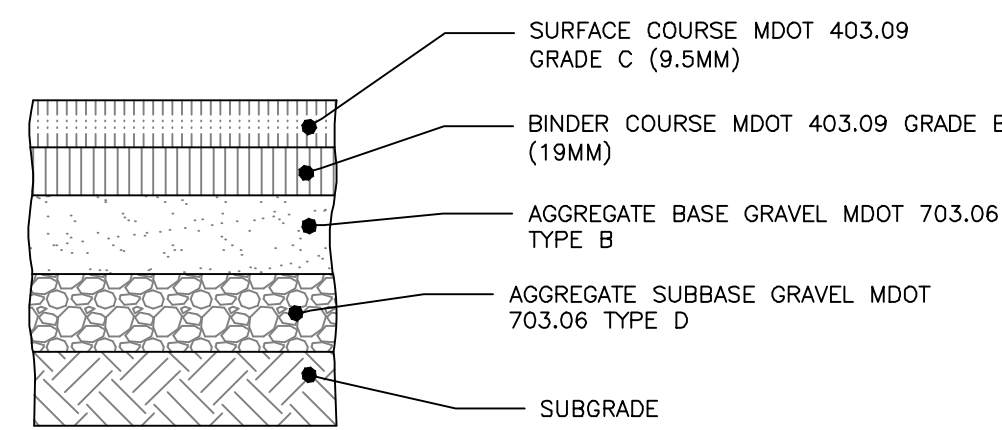


- NOTE:**
- PROOF ROLL THE SUBBASE TO 95% MAXIMUM DRY DENSITY IN ACCORDANCE WITH ASTM D-1557 AFTER THE PAVEMENT DRAINS HAVE BEEN INSTALLED AND ARE FULLY FUNCTIONING. MINIMUM OF 5 MODIFIED PROCTOR TESTS ON EXISTING SUBGRADE MATERIALS, BASED UPON FIELD OBSERVATIONS OF MATERIAL GRADATION. FIELD DENSITY TESTING AT A MINIMUM OF 50 FOOT SPACING.
 - COMPACT THE AGGREGATE BASE TO 95% MAXIMUM DRY DENSITY IN ACCORDANCE WITH ASTM D-1557.
 - PAVING OPERATIONS SHALL BE SUBJECT TO THE MINIMUM REQUIREMENTS OF THE MAINE DOT SECTION 401.19 QUALITY CONTROL METHOD D, UNLESS WAIVED BY THE OWNER.
 - PAVING PROFILE EXCEEDS GEOTECH REPORT PROFILE.

THICKNESS OF LAYERS	
STANDARD	LAYERS
1-1/4"	SURFACE COURSE MDOT 403.208 GRADE C (12.5 mm)
2-0"	BINDER COURSE MDOT 403.207 GRADE B (19 mm)
3"	AGGREGATE BASE GRAVEL MDOT 703.06 TYPE A
15"	AGGREGATE SUBBASE GRAVEL MDOT 703.06 TYPE D

BITUMINOUS PAVEMENT PROFILE
NOT TO SCALE

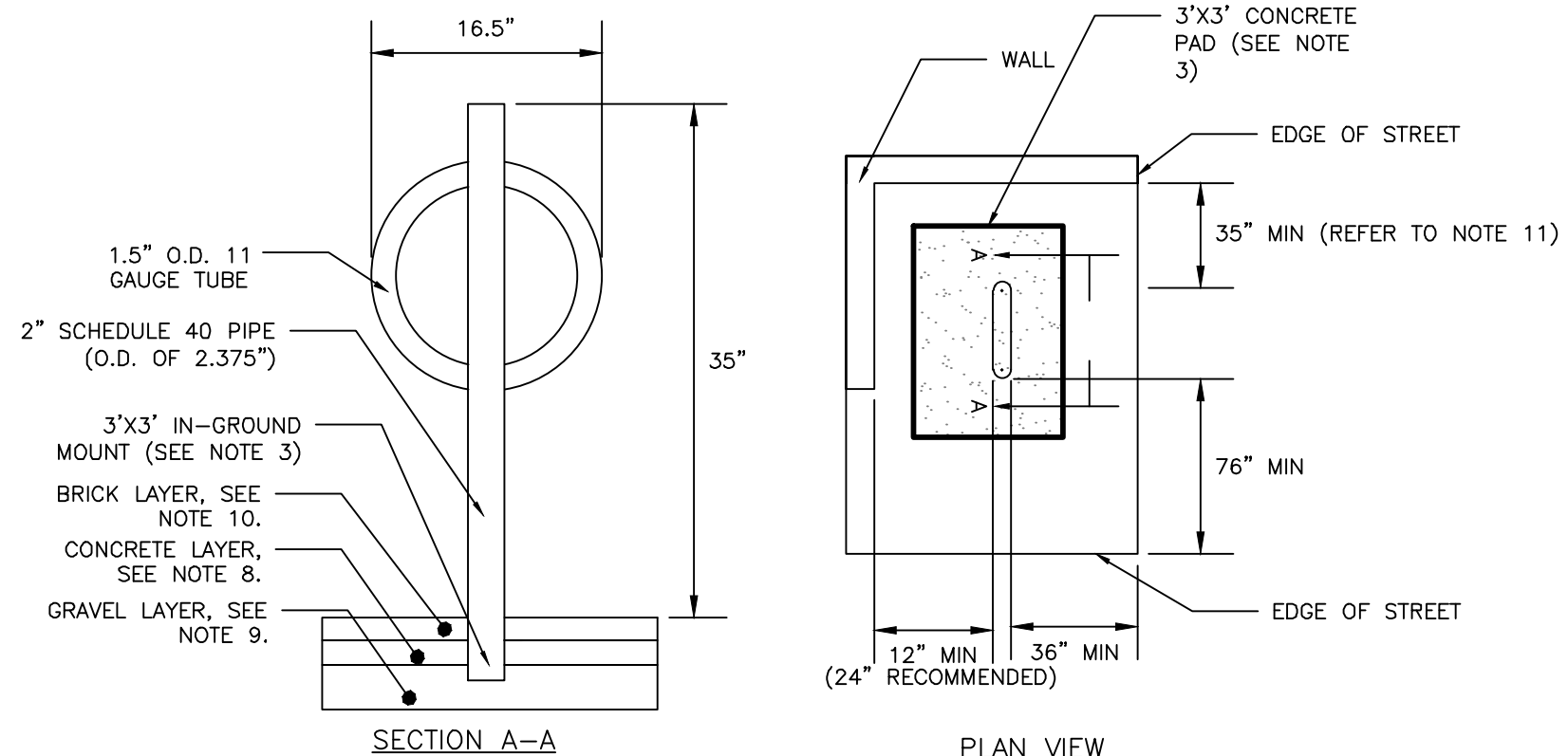


- NOTES:**
- COMPACT SUBGRADE TO 95% MAXIMUM DRY DENSITY IN ACCORDANCE WITH ASTM D-1557
 - LOCAL BITUMINOUS PAVEMENT PROFILE APPLIES TO LOCATIONS INCLUDED WITHIN O'BRION STREET R.O.W.

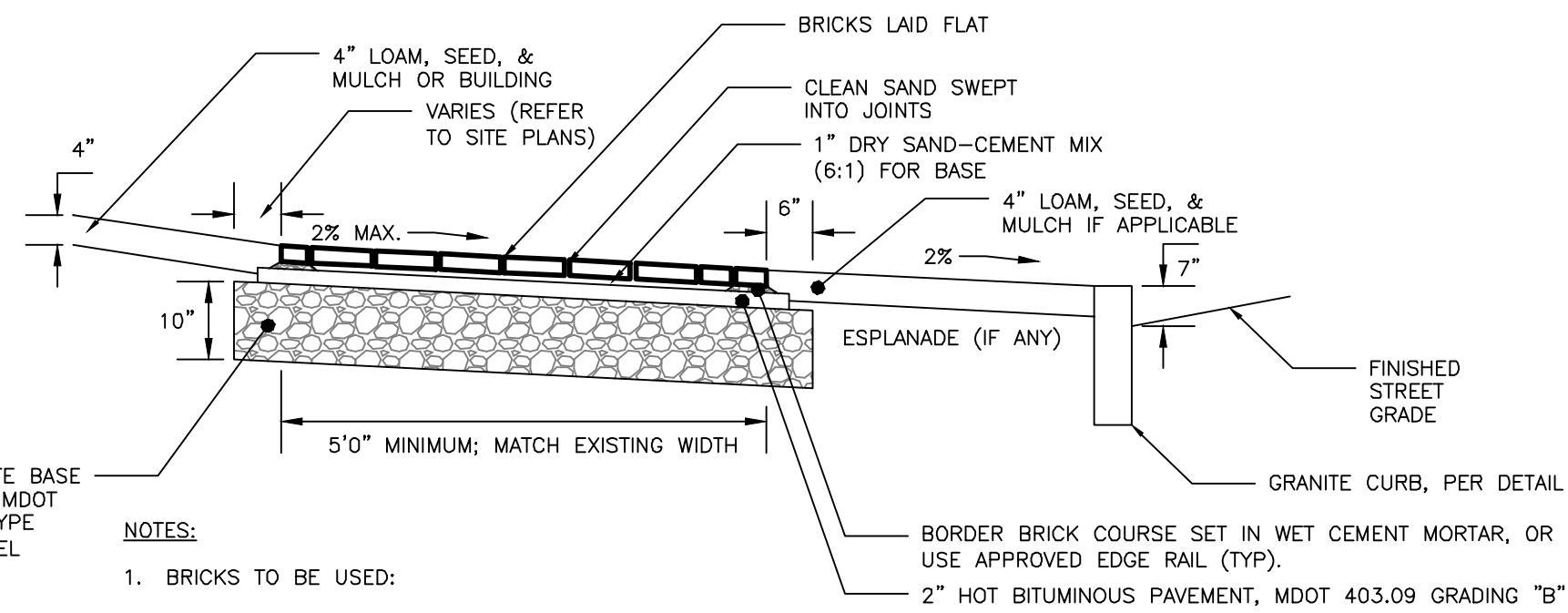
THICKNESS OF LAYERS	
STANDARD	LAYERS
1-1/2"	SURFACE COURSE MDOT 403.09 GRADE C (9.5mm)
2"	BINDER COURSE MDOT 403.09 GRADE B (19mm)
3"	AGGREGATE BASE GRAVEL MDOT 703.06 TYPE B
15"	AGGREGATE SUBBASE GRAVEL MDOT 703.06 TYPE D

LOCAL BITUMINOUS PAVEMENT PROFILE
NOT TO SCALE

- NOTES:**
- BICYCLE RACK SHALL HAVE CAPACITY FOR TWO BICYCLES.
 - BICYCLE RACK PARTS SHALL BE OF UNIFORM COLOR AND SHALL BE FINISHED IN ACCORDANCE WITH PRODUCT SPECIFICATION.
 - BICYCLE RACK SHALL BE INSTALLED IN ACCORDANCE WITH MANUFACTURER'S MOST RECENT INSTALLATION RECOMMENDATIONS, AND SHALL BE INSTALLED WITH AN IN-GROUND MOUNT UNLESS OTHERWISE APPROVED BY ENGINEER.
 - BICYCLE RACK SHALL BE "DERO BIKE HITCH", AS MANUFACTURED BY DERO BIKE RACKS.
 - MINIMUM OFFSETS SHOWN. MANUFACTURER'S RECOMMENDED OFFSETS SHALL BE ENFORCED WHERE POSSIBLE.
 - MINIMUM DISTANCE BETWEEN BICYCLE RACKS SHALL BE 24". RECOMMENDED DISTANCE BETWEEN BICYCLE RACKS SHALL BE 38".
 - ALL OFFSETS ARE FROM OUTSIDE EDGES OF ITEMS.
 - CONCRETE SHALL BE 4000 PSI @28 DAYS. BOTTOM OF CONCRETE SHALL BE AT TOP OF SIDEWALK GRAVEL ELEVATION. DEPTH VARIES APPROX. 4"-7".
 - GRAVEL LAYER SHALL BE INSTALLED IN ACCORDANCE WITH BRICK SIDEWALK WITH BITUMINOUS BASE DETAIL, AND SHALL BE MAINEDOT 703.06 TYPE B.
 - TOP OF BRICK LAYER SHALL BE AT SAME ELEVATION IN ACCORDANCE WITH BRICK SIDEWALK DETAIL.
 - 54" MIN DISTANCE BETWEEN EDGE OF STREET AND BICYCLE HITCH IF AISLE IS REQUIRED.



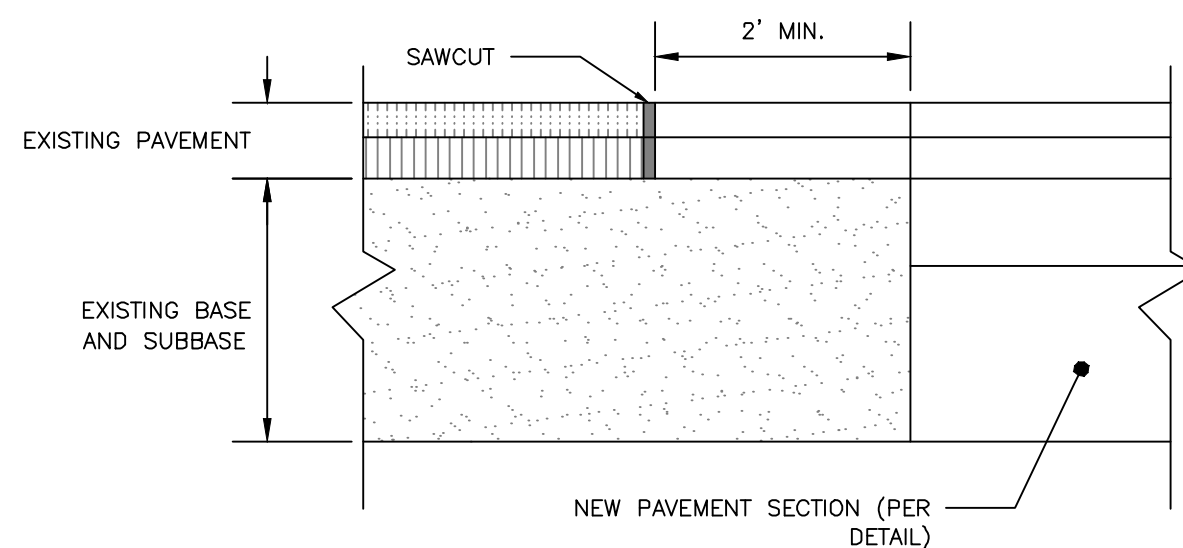
BICYCLE HITCH DETAIL
NOT TO SCALE



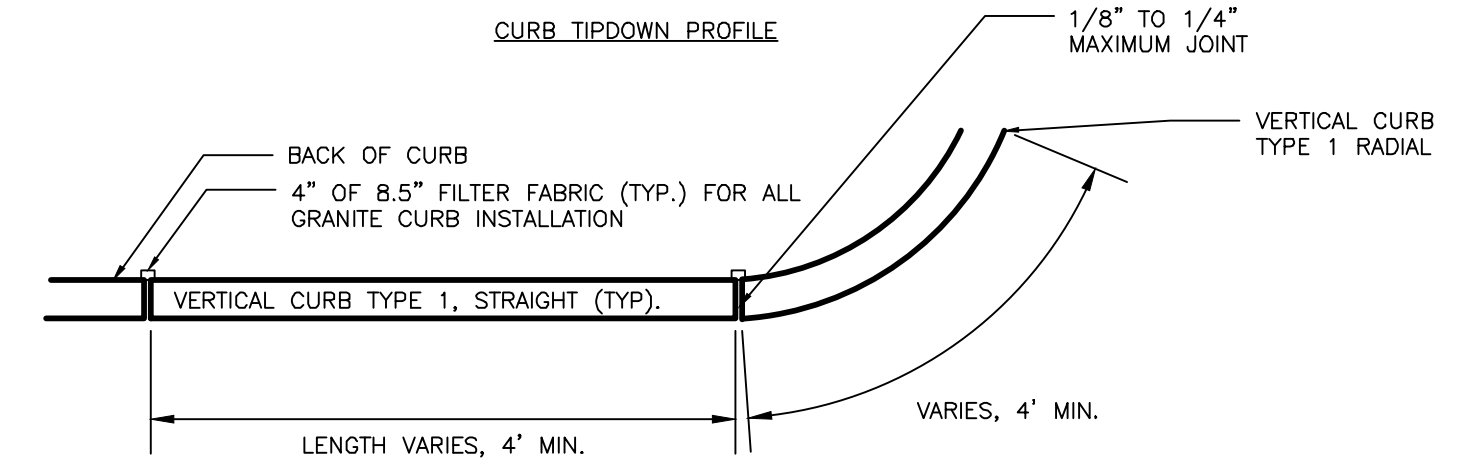
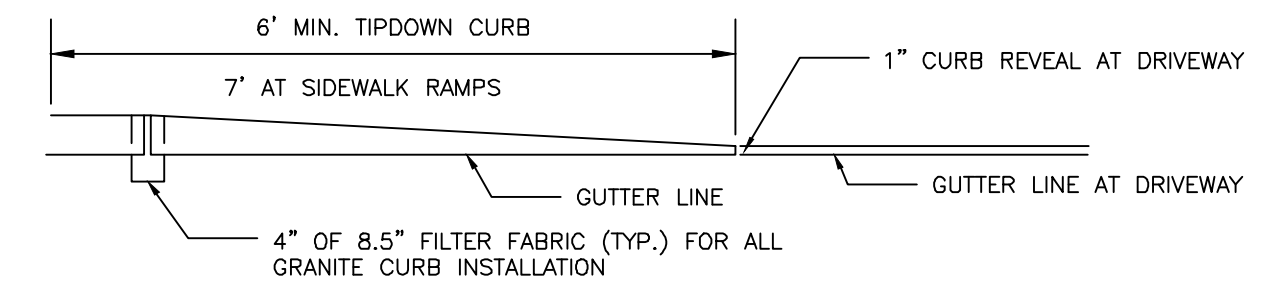
- NOTES:**
- BRICKS TO BE USED:
NEW CONSTRUCTION:
4"x8" PINE HALL PATHWAY PAVER BRICK; MFG. BY PINE HALL BRICK CO., MADISON, NORTH CAROLINA. LACHANCE ITEM #193623; PINE HALL PATHWAY PAVER BRICK.
 - INSTALL BRICK FLUSH UP TO BUILDING, PAVEMENT, STAIRS, CONCRETE SURFACES, CURB OR LANDSCAPED AREAS.

BRICK SIDEWALK WITH BITUMINOUS BASE DETAIL
NOT TO SCALE

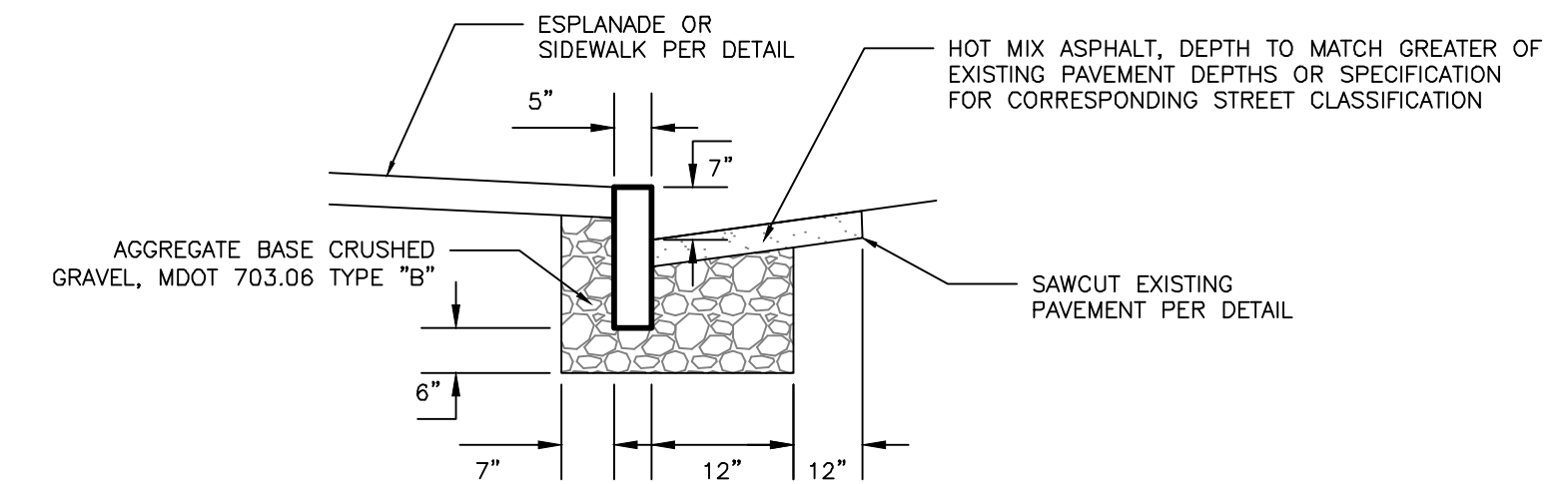
- NOTES:**
- SAWCUT EXISTING PAVEMENT AND REMOVE 2' STRIP OF EXISTING PAVEMENT. APPLY BITUMINOUS TACK COAT PRIOR TO PLACEMENT OF NEW BITUMINOUS PAVEMENT.
 - THE NEW PAVEMENT SECTION SHALL MEET THE CITY OF PORTLAND ARTERIAL BITUMINOUS PAVEMENT SECTION DETAIL AT A MINIMUM OR THE EXISTING PAVEMENT AND AGGREGATE BASE AND SUBBASE DEPTH WHICHEVER IS GREATER.



PAVEMENT SAWCUT DETAIL
NOT TO SCALE

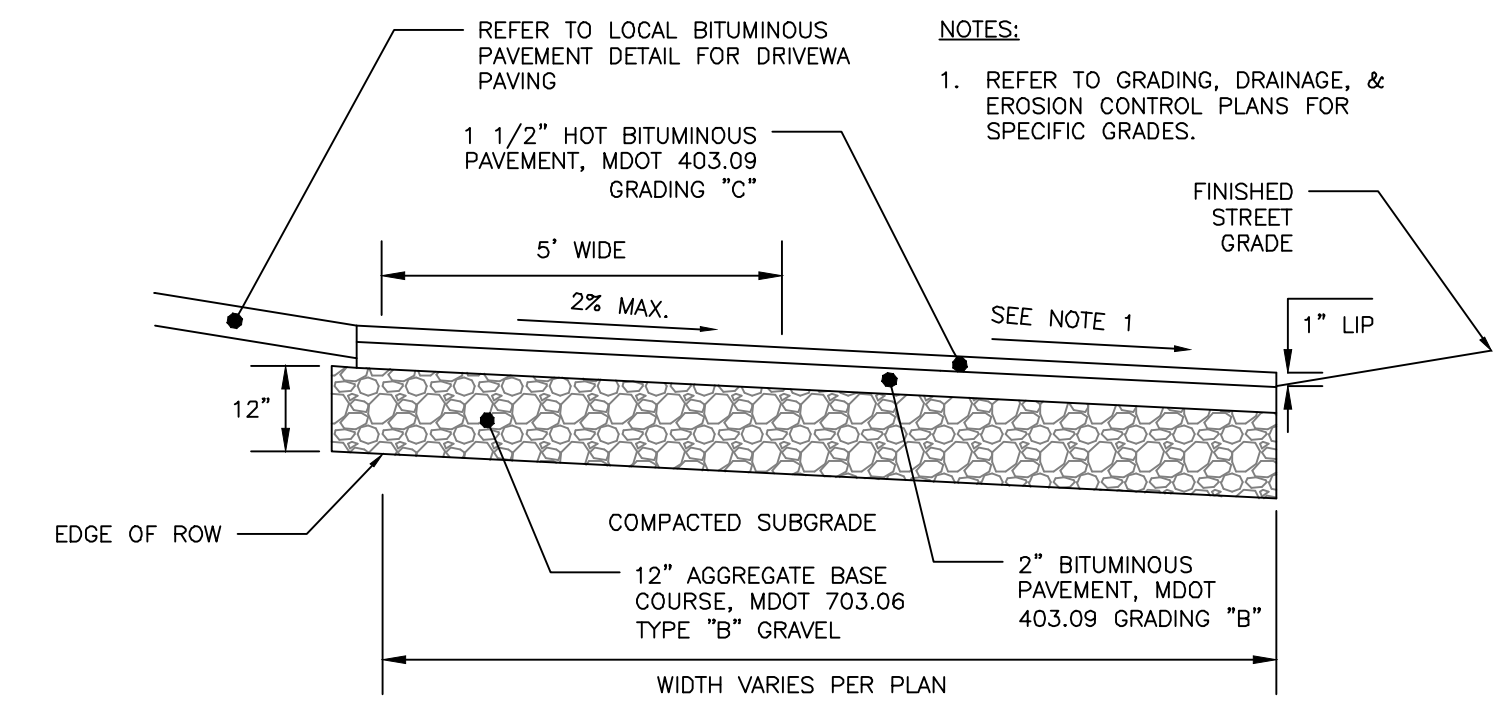


VERTICAL GRANITE CURB PLAN VIEW



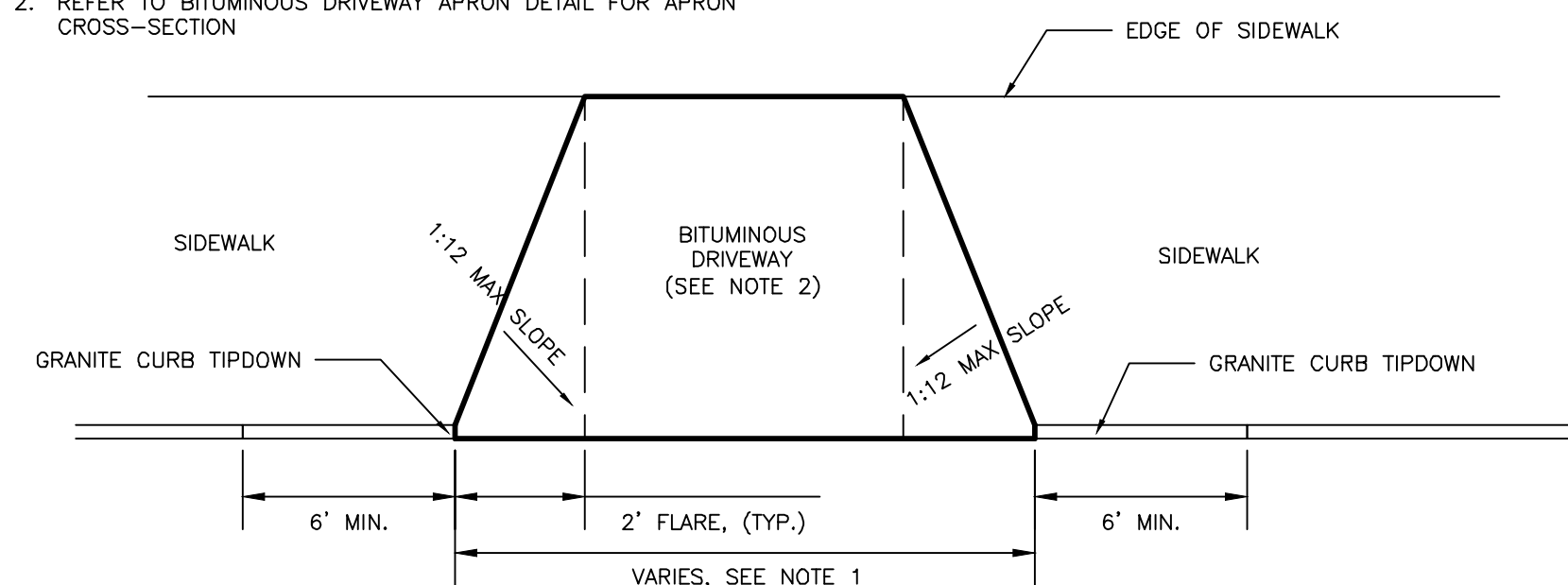
VERTICAL GRANITE CURB CROSS SECTION

VERTICAL GRANITE CURB AND TIPDOWN INSTALLATION
NOT TO SCALE



BITUMINOUS DRIVEWAY APRON DETAIL
NOT TO SCALE

- NOTES:**
- REFER TO GRADING, DRAINAGE AND EROSION CONTROL PLANS FOR SITE GRADING
 - REFER TO BITUMINOUS DRIVEWAY APRON DETAIL FOR APRON CROSS-SECTION



DRIVEWAY APRON LAYOUT DETAIL
NOT TO SCALE

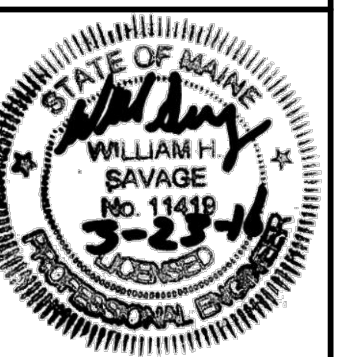
PRELIMINARY
NOT ISSUED FOR
CONSTRUCTION

ISSUED FOR	BY
PRELIM. APPLICATION	WHS
	3/22/16
REVISION	REV. DATE

SITE DETAILS 1
40 O'BRION STREET REDEVELOPMENT
215 FORESIDE ROAD, LLC.
215 FORESIDE ROAD FALMOUTH, MAINE 04105

ENGINEERING, INC.
A C O R N
158 BANKFOOT ST. PORTLAND, MAINE 04102
(207) 775-2655

FILE: 1070_DETAILS
DATE: 1/22/16
JN: 1070
SCALE: NTS
DESIGNED BY: WHS
DRAWN BY: WHS
CHECKED BY: WHS



DRAWING NO.
C-40