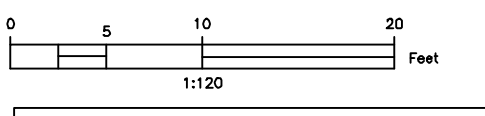
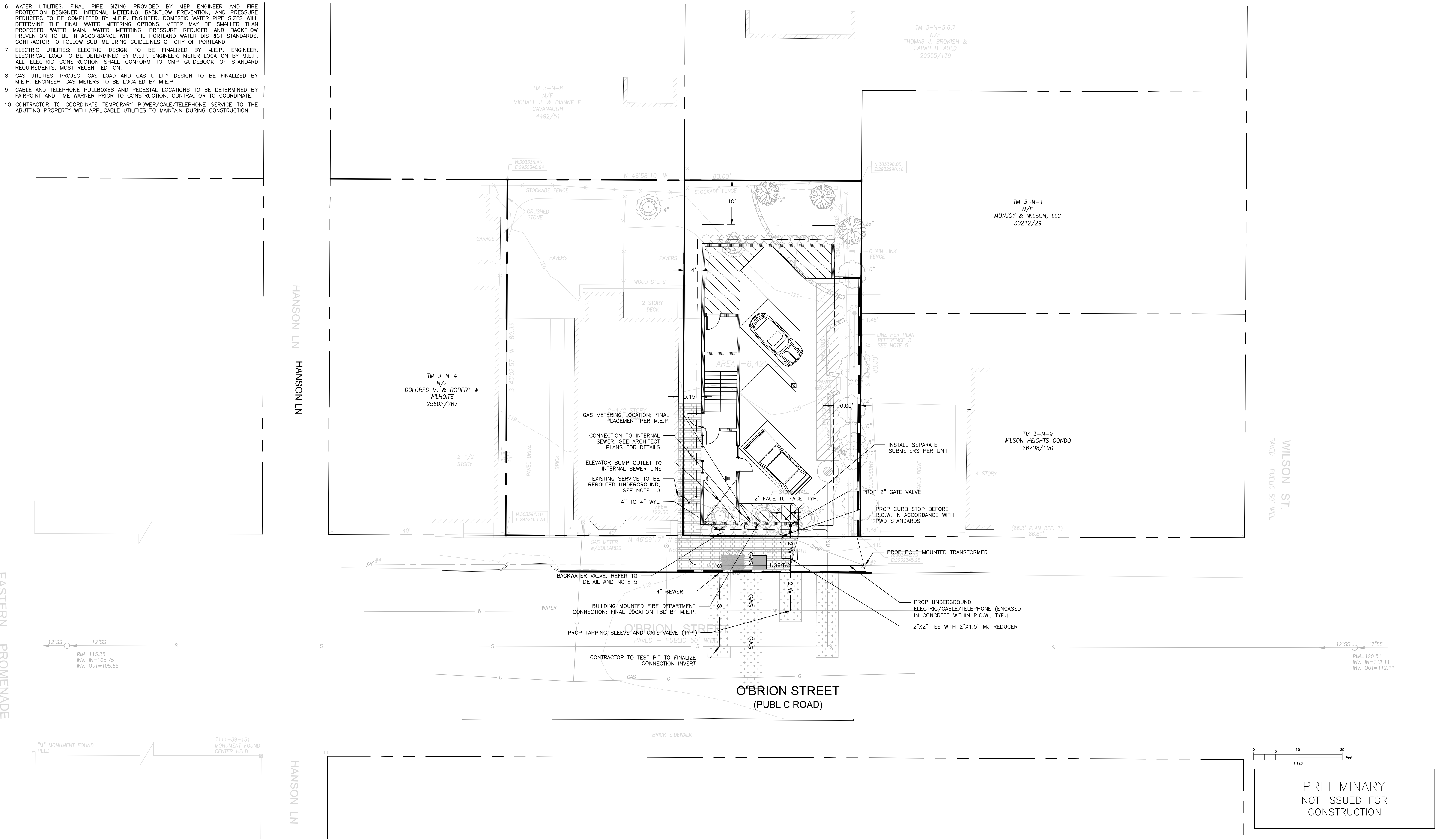
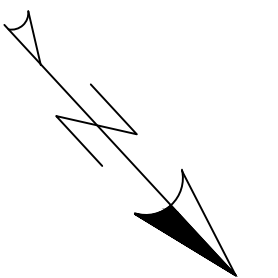


GENERAL NOTES:

1. STORMWATER DRAINAGE INFRASTRUCTURE INDICATED ON SHEET C-30.
2. LOCATION OF PROPOSED CONNECTIONS APPROXIMATE. CONTRACTOR TO CONTACT ENGINEER IF FIELD INFORMATION VARIES FROM INFORMATION ON PLANS.
3. CONTRACTOR IS TO BE CAUTIONED THAT CERTAIN LOCATIONS AND/OR ELEVATIONS OF EXISTING UTILITIES HAVE BEEN PROVIDED THROUGH UTILITY COORDINATION OR OTHER OBSERVATIONS. INFORMATION IS NOT TO BE RELIED UPON AS EXACT OR COMPLETE. CONTRACTOR TO FIELD VERIFY AND COORDINATE WITH UTILITY COMPANY AND DIG SAFE NO LESS THAN 72 HOURS PRIOR TO ANY EXCAVATION TO REQUEST EXACT FIELD LOCATION OF ALL UTILITIES. IT SHALL BE THE RESPONSIBILITY OF THE CONTRACTOR TO RELOCATE ALL EXISTING UTILITIES WHICH CONFLICT WITH THE PROPOSED IMPROVEMENTS INDICATED IN THE CONTRACT DOCUMENTS. CONTRACTOR TO NOTIFY ENGINEER OF ANY DIFFERENTIATIONS FROM EXISTING CONDITIONS, INCLUDING UTILITY SURVEY, PRIOR TO ANY CHANGES.
4. FOR ALL UTILITIES, ACORN ENGINEERING DESIGN LIMITS EXTEND TO OUTSIDE WALL OF BUILDING. METERING OF UTILITIES TO BE COMPLETED BY M.E.P. UNLESS SPECIFIED OTHERWISE.
5. SEWER: SEWER UTILITIES TO BE CONSTRUCTED IN ACCORDANCE WITH CITY OF PORTLAND TECHNICAL STANDARDS. M.E.P. TO PLACE VALVE FOR BACKFLOW PREVENTION INSIDE OF BUILDING FOR EACH SEWER CONNECTION. CONTACT ENGINEER IF FIELD CONDITIONS FROM INVERT VARY FROM DESIGN.
6. WATER UTILITIES: FINAL PIPE SIZING PROVIDED BY MEP ENGINEER AND FIRE PROTECTION DESIGNER. INTERNAL METERING, BACKFLOW PREVENTION, AND PRESSURE REDUCERS TO BE COMPLETED BY M.E.P. ENGINEER. DOMESTIC WATER PIPE SIZES WILL DETERMINE THE FINAL WATER METERING OPTIONS. METER MAY BE SMALLER THAN PROPOSED WATER MAIN. WATER METERING, PRESSURE REDUCER AND BACKFLOW PREVENTION TO BE IN ACCORDANCE WITH THE PORTLAND WATER DISTRICT STANDARDS. CONTRACTOR TO FOLLOW SUB-METERING GUIDELINES OF CITY OF PORTLAND.
7. ELECTRIC UTILITIES: ELECTRIC DESIGN TO BE FINALIZED BY M.E.P. ENGINEER. ELECTRICAL LOAD TO BE DETERMINED BY M.E.P. ENGINEER. METER LOCATION BY M.E.P. ALL ELECTRIC CONSTRUCTION SHALL CONFORM TO CMP GUIDEBOOK OF STANDARD REQUIREMENTS, MOST RECENT EDITION.
8. GAS UTILITIES: PROJECT GAS LOAD AND GAS UTILITY DESIGN TO BE FINALIZED BY M.E.P. ENGINEER. GAS METERS TO BE LOCATED BY M.E.P.
9. CABLE AND TELEPHONE PULLBOXES AND PEDESTAL LOCATIONS TO BE DETERMINED BY FAIRPOINT AND TIME WARNER PRIOR TO CONSTRUCTION. CONTRACTOR TO COORDINATE.
10. CONTRACTOR TO COORDINATE TEMPORARY POWER/CALE/TELEPHONE SERVICE TO THE ADJUTING PROPERTY WITH APPLICABLE UTILITIES TO MAINTAIN DURING CONSTRUCTION.



PRELIMINARY
NOT ISSUED FOR
CONSTRUCTION

ISSUED FOR	BY
PRELIM. APPLICATION	WHS
	DATE
	3/22/18

DRAWING NAME	UTILITY PLAN
PROJECT NAME	40 O'BRIEN STREET REDEVELOPMENT
CLIENT	215 FORESIDE ROAD, WILSON, MAINE 04105

FILE:	1070_CIVL
DATE:	1/22/18
JN:	1070
SCALE:	1"=10'
DESIGNED BY:	WHS
DRAWN BY:	OJD
CHECKED BY:	WHS

DRAWING NO.
C-20