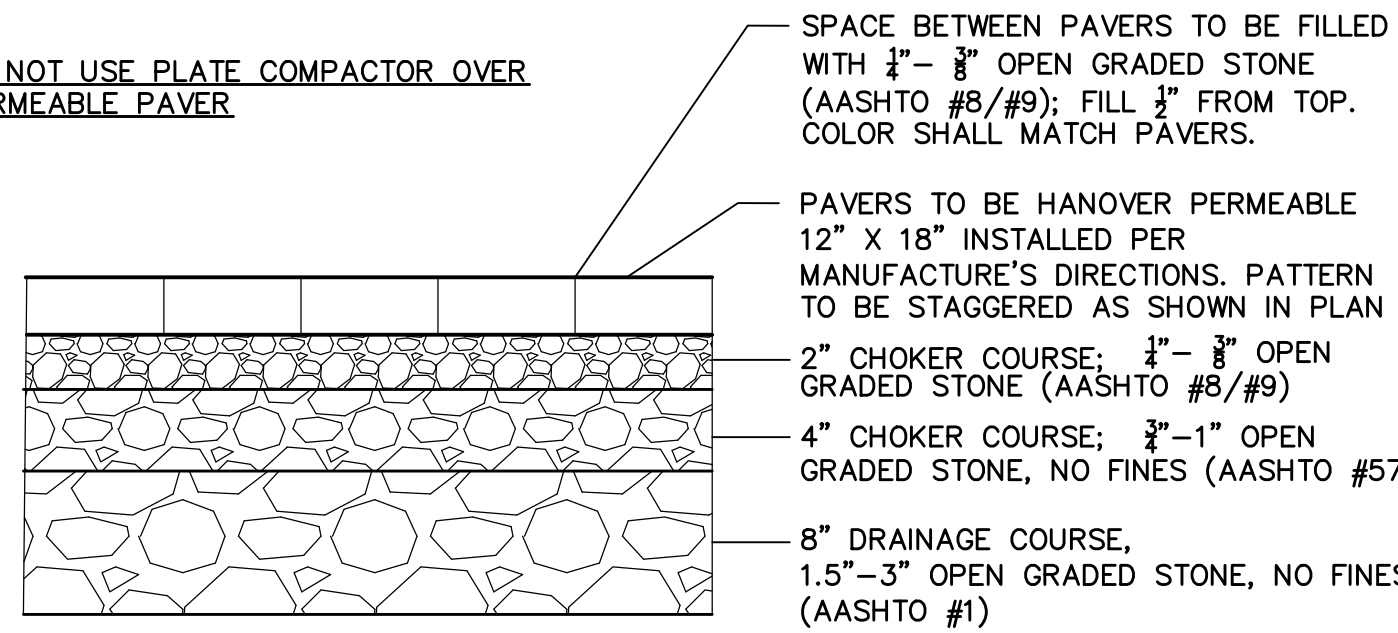


1. If the existing sewer is PVC then the connection shall be made using bell and spigot joints, NOT Ferncos.
2. All damaged piping shall be removed by saw cutting or removing an entire segment of pipe and replaced with new PVC. Contractor shall remove clay bell(s) (by saw cutting) to facilitate Fernco installation. Saw cuts shall be square so that joints between new and existing pipes do not have gaps.
3. Contractor is responsible for maintaining sewer flows while making the new sewer service and drain connections. If required, bypass pumping shall be coordinated with the City. Contractor shall provide the City 24 hours notice.
4. Bypass pumping may be required and shall be coordinated with the City.

**CONNECTION TO SANITARY SEWER**  
NOT TO SCALE

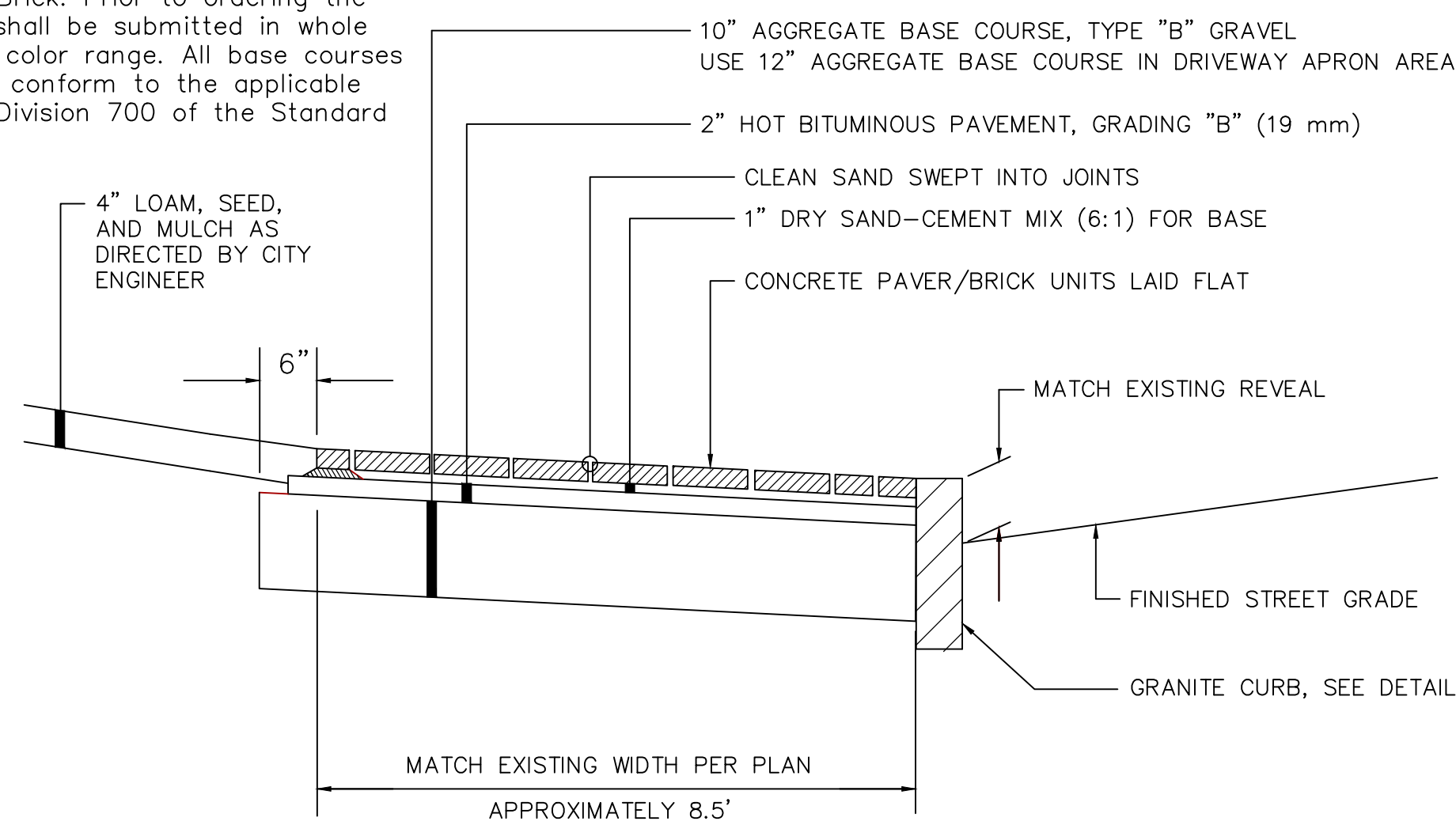
\* DO NOT USE PLATE COMPACTOR OVER PERMEABLE PAVER



SUBGRADE TO BE BACKFILLED WITH COARSE SAND AFTER REMOVAL OF URBAN SOILS.

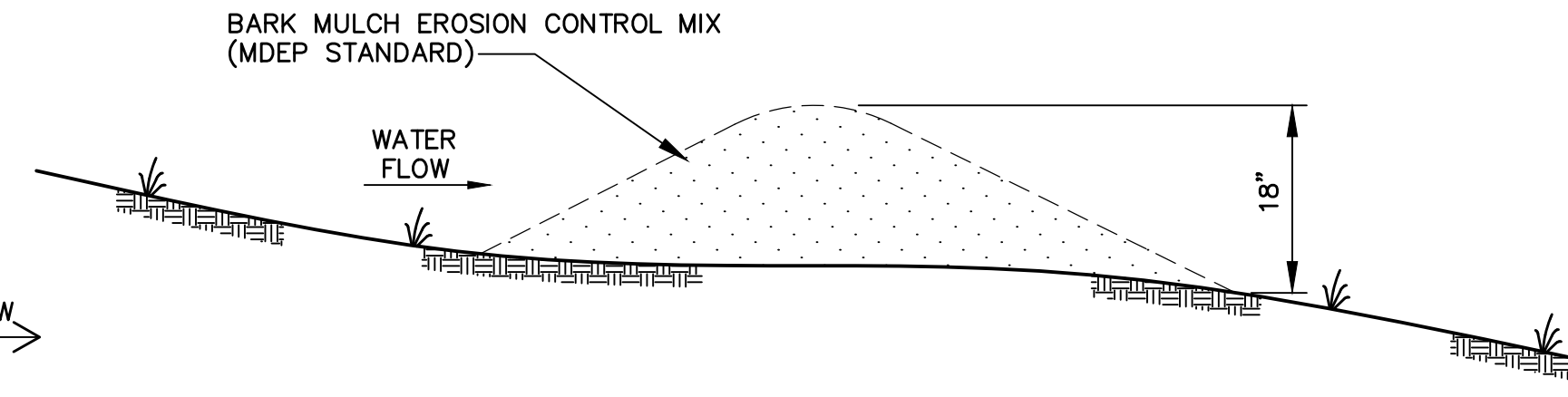
**PERMEABLE PAVER DETAIL**  
NOT TO SCALE

BRICKS SHALL BE: Bricks shall be of standard size (2-1/4" x 4" x 8"). Bricks shall be Pine Hall Pathway Paver Brick as manufactured by Pine Hall Brick Co., Madison, North Carolina. Specification number: 4"X8"; LaChance item # 193623, Pine Hall Pathway Paver Brick. Prior to ordering the brick, samples shall be submitted in whole straps to show color range. All base courses and joints shall conform to the applicable subsections of Division 700 of the Standard Specifications



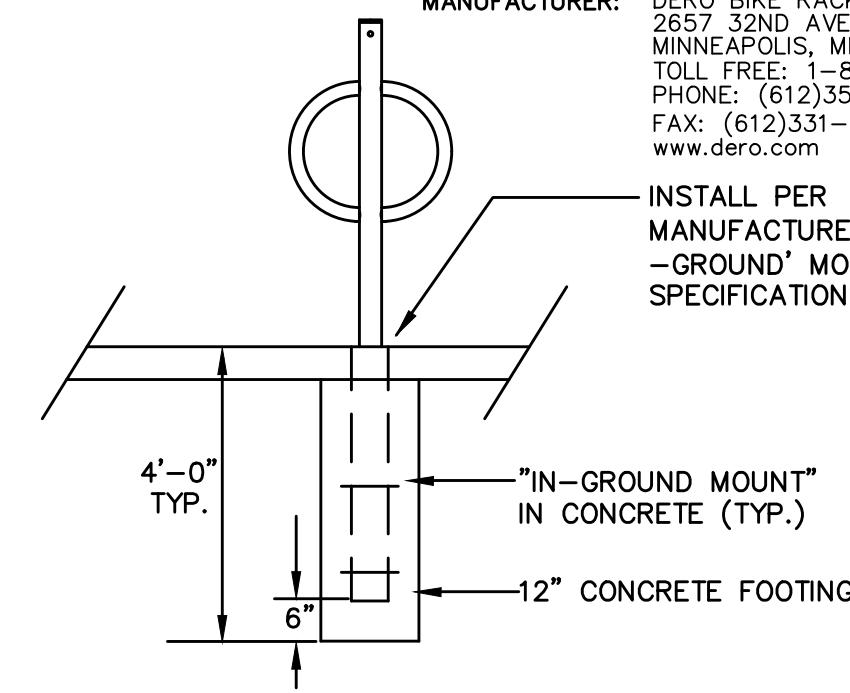
**PERMITTING SET**

**BRICK SIDEWALK WITH BITUMINOUS BASE**  
NOT TO SCALE

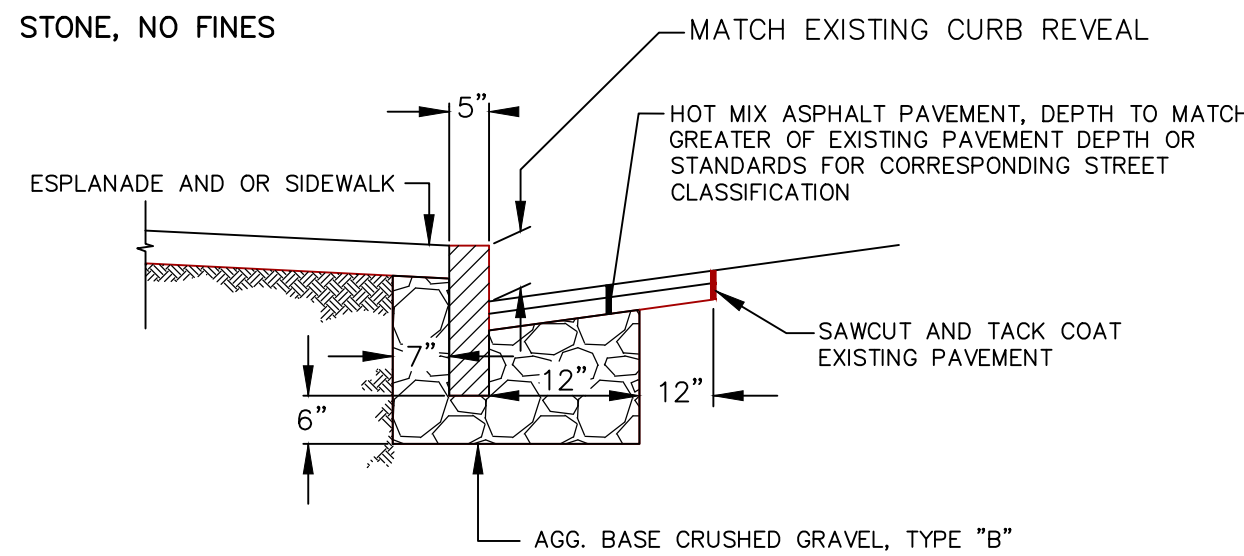


**MULCH BERM DETAIL**  
NOT TO SCALE

DERO BIKE RACK - BIKE HITCH MODEL (OR EQUAL) SHALL BE HOT DIPPED GALVANIZED AND PAINTED BLACK IN COLOR.  
MANUFACTURER: DERO BIKE RACK CO. 2657 32ND AVE. SOUTH MINNEAPOLIS, MN 55406 TOLL FREE: 1-888-337-6729 PHONE: (612)359-0689 FAX: (612)331-2731 www.dero.com



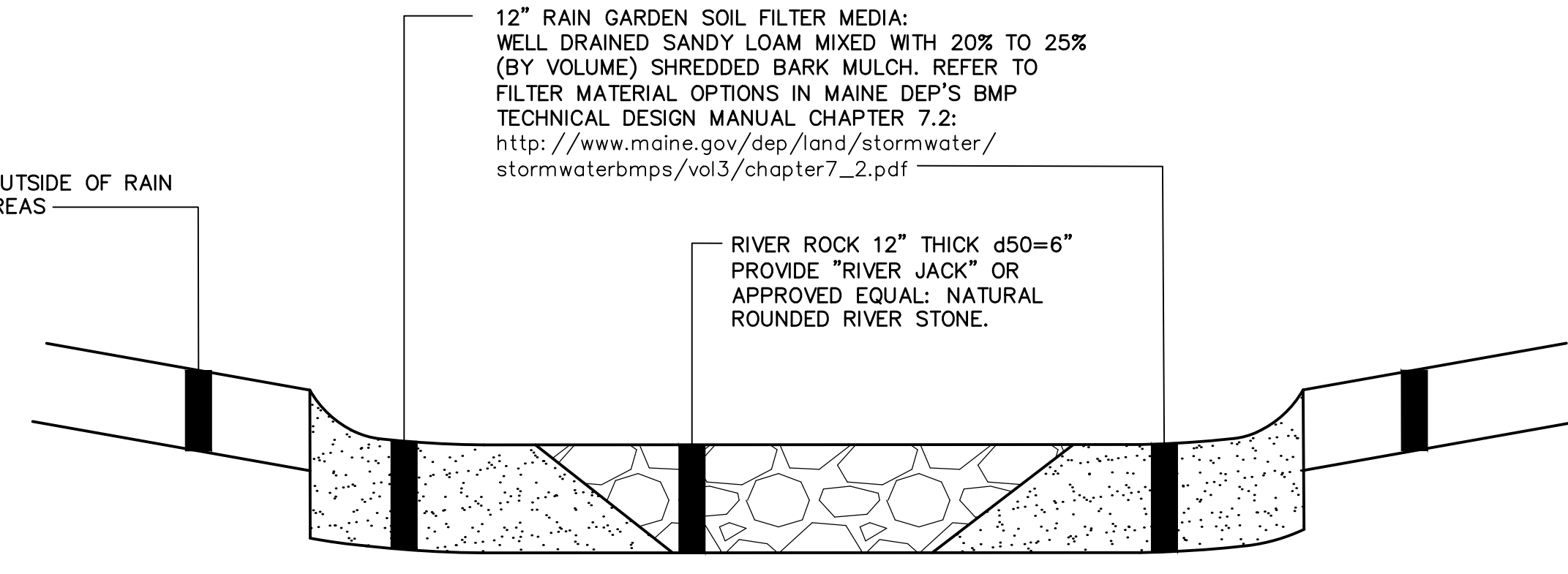
**BIKE RACK DETAIL**  
NOT TO SCALE



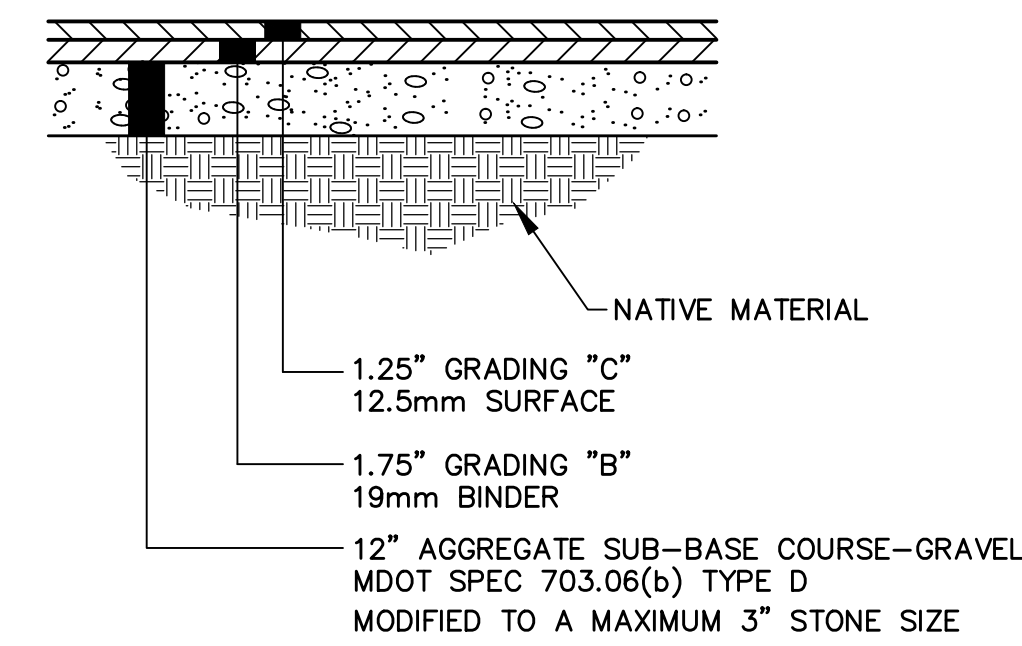
**VERTICAL GRANITE CURB INSTALLATION IN EXISTING STREETS**  
NOT TO SCALE

**RAIN GARDEN AND GREEN SPACE NOTES:**

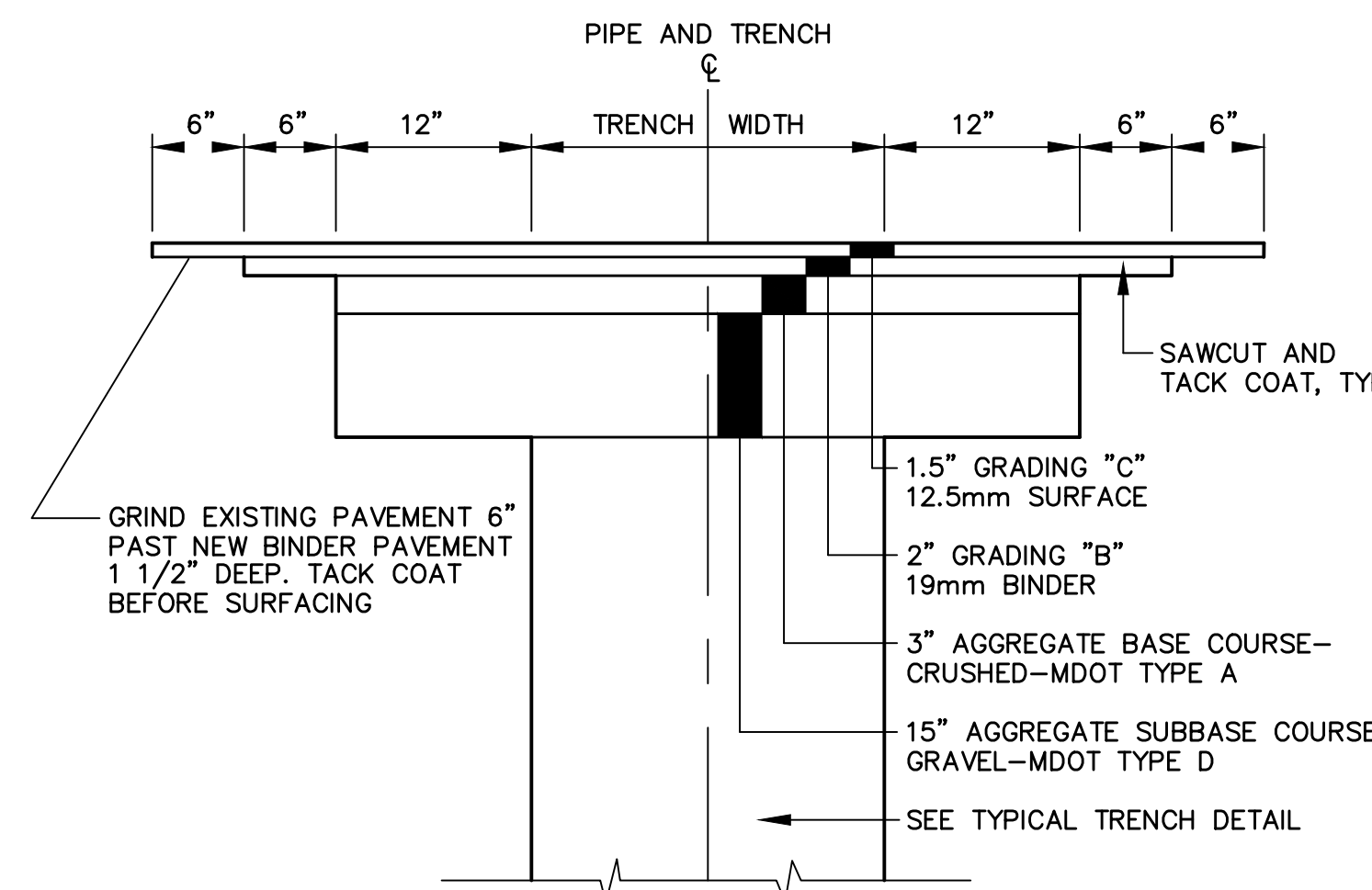
1. GREEN SPACE OUTSIDE RAIN GARDEN AREAS TO RECEIVE 6" OF LOAM.
2. SEED RAIN GARDEN AND LOAMED AREAS WITH LOW-MOW/LOW-MAINTENANCE NATIVE GRASS SEED
3. SLOPE SOIL FILTER MEDIA INTO RIVER ROCK BED AS SHOWN IN ORDER TO MINIMIZE MIGRATION OF MEDIA INTO VOIDS BETWEEN STONES.



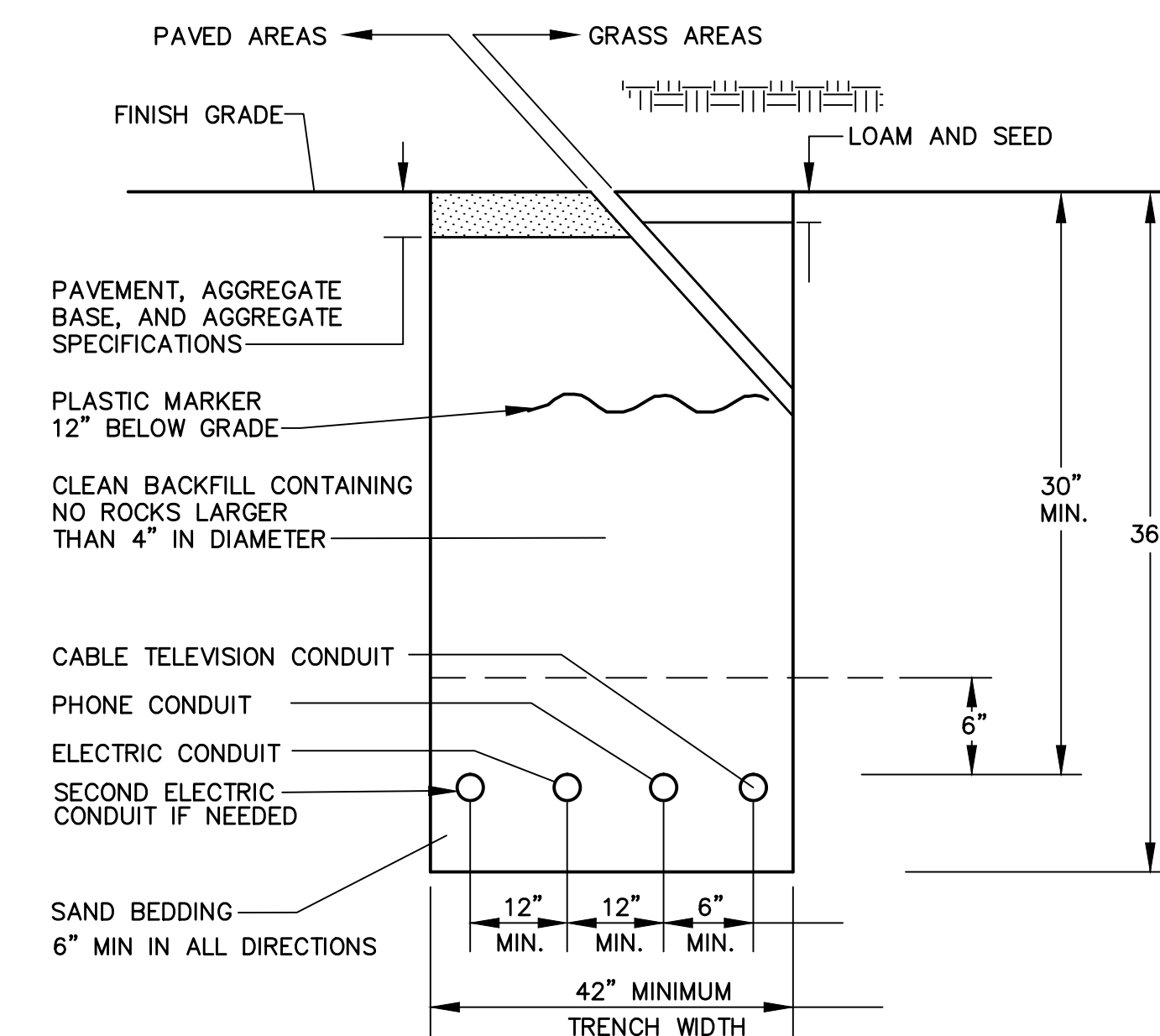
**RAIN GARDEN DETAIL**  
NOT TO SCALE



**TYPICAL DRIVEWAY CONSTRUCTION OUTSIDE OF RIGHT OF WAY**  
NOT TO SCALE

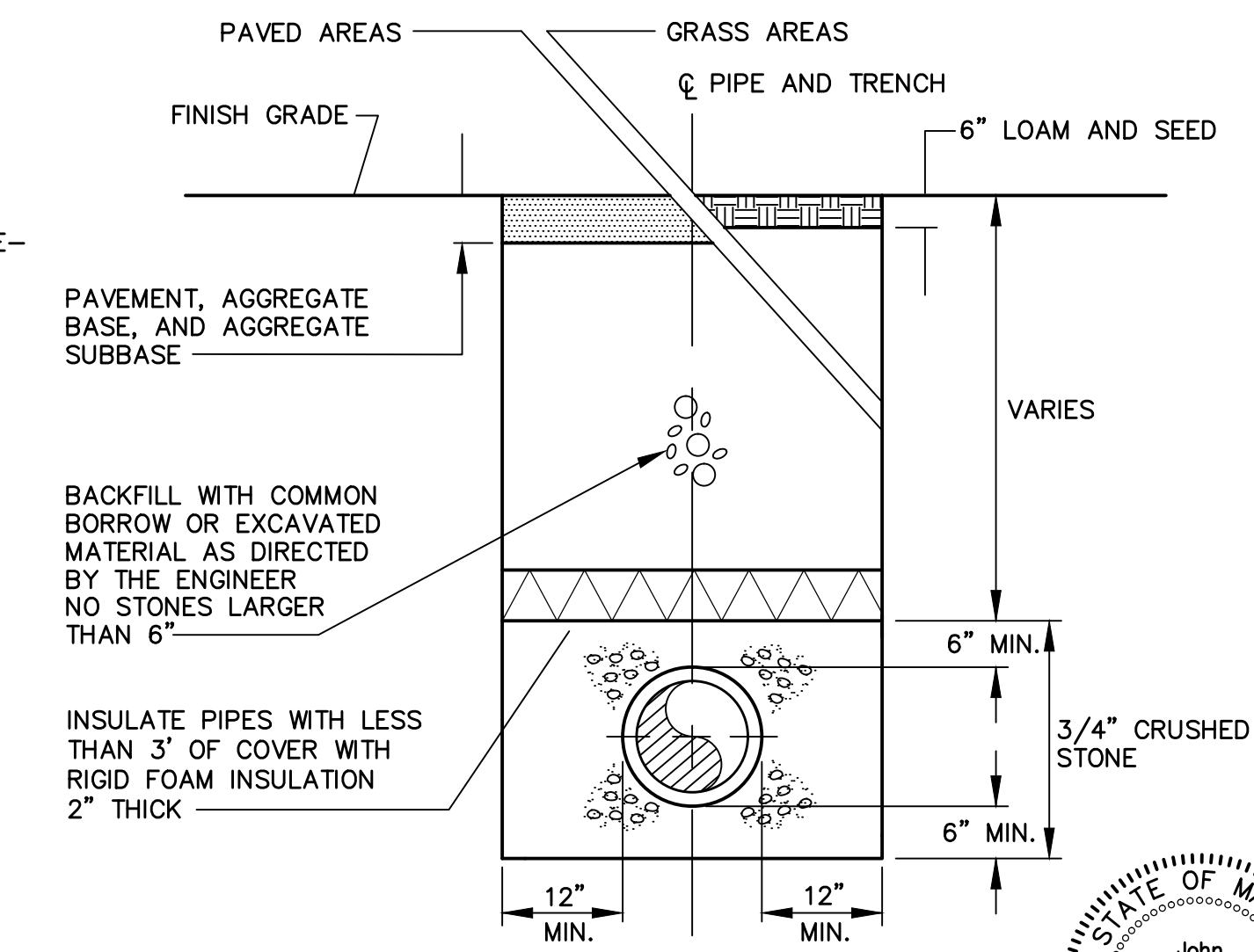


**TYPICAL TRENCH PAVING DETAIL**  
NOT TO SCALE

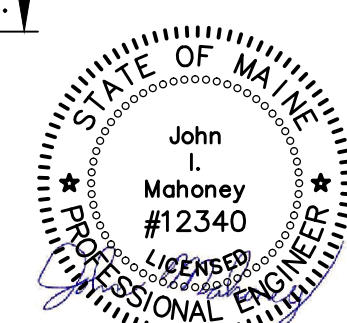


SEE ELECTRICAL PLANS FOR CONDUIT SIZES

**UNDERGROUND UTILITY TRENCH DETAIL**  
NOT TO SCALE



**TYPICAL TRENCH REPAIR DETAIL**  
NOT TO SCALE



Project  
**65 Munjoy Street**  
65 MUNJOY STREET  
PORTLAND, MAINE

Owner / Developer:  
Adams Apple, LLC  
30 Danforth Street, Suite 213  
Portland, Maine 04101  
207-272-8550

Random Orbit, Inc.  
30 Danforth Street, Suite 213  
Portland, Maine 04101  
207-712-0954

Consultants:

**bild**  
ARCHITECTURE  
Architect  
Bild Architecture  
30 Danforth Street, Suite 213  
Portland, Maine 04101  
207-408-0168

**RANSOM**  
Consulting, Inc.  
Civil Engineer  
Ransom Consulting, Inc.  
400 Commercial Street, Suite 404  
Portland, Maine 04101  
207-772-2891

**pbla**  
peter burke landscape architecture  
Landscape Architect  
Peter Burke Landscape Architecture  
34 Brown Street  
Westbrook, Maine 04092  
207-632-7372

Surveyor  
Owen Haskell, Inc.  
390 Route One  
Falmouth, Maine 04105  
207-774-0424

Structural Engineer  
SEI Shelley Engineering, Inc.  
Structural Consultants  
P.O. Box 1330  
Gray, Maine 04039  
Phone (207) 657-8031  
www.ShelleyEngineering.com

Geotechnical Engineer  
410 LIBBON ST. - SUITE 600 173 PLEASANT STREET  
LEWISTON, ME 04240 ROCKLAND, ME 04841  
Tel: (207) 936-3330 Tel: (207) 938-1161

**SUMMIT**  
GEOENGINEERING SERVICES  
www.summitgeoeng.com

Construction Manager  
Wright-Ryan Construction  
10 Danforth Street  
Portland, Maine 04101  
207-773-3825

**WR**  
Wright-Ryan

**CIVIL DETAILS**

B	SITE PLAN PERMITTING	12/11/15
A	PRE-APPLICATION MEETING	11/18/15
No.	Revision/Issue	Date
Design by:	JIM	Checked by: SJB
Drawn by:	JIM	Approved by: SJB
Project:	141.06157	
Sheet No:	<b>C3</b>	