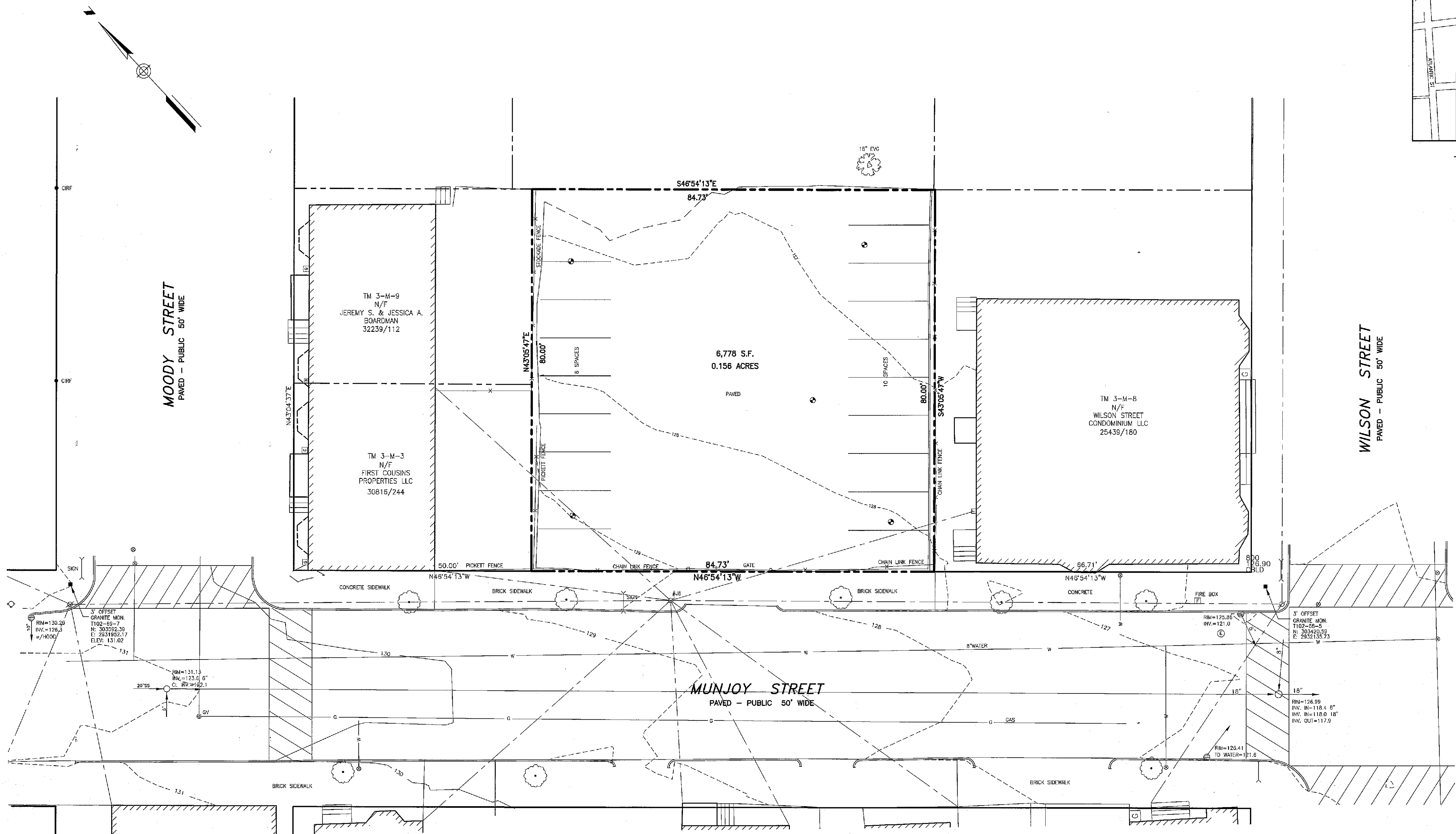


LOCATION MAP
N.T.S.

LEGEND

- IRON PIPE OR ROD FOUND
- MONUMENT FOUND
- UTILITY POLE
- MANHOLE
- SIGN
- CATCH BASIN
- HYDRANT
- WATER VALVE OR SHUTOFF
- LIGHT POLE
- DECIDUOUS TREE
- CONIFEROUS TREE
- POSSIBLE BORING LOCATION
- FENCE
- CURB
- OVERHEAD WIRES
- WATER LINE
- GAS LINE
- STORM DRAIN
- SANITARY SEWER
- 1" CONTOUR
- N/F NOW OR FORMERLY
- 000/000 DEED BOOK AND PAGE
- CRF CAPPED IRON ROD FOUND
- INV. INVERT



UTILITY NOTE

THE UNDERGROUND UTILITIES SHOWN HAVE BEEN LOCATED FROM FIELD SURVEY INFORMATION AND EXISTING DRAWINGS. THE SURVEYOR MAKES NO GUARANTEE THAT THE UNDERGROUND UTILITIES SHOWN COMPRISE ALL SUCH UTILITIES IN THE AREA, EITHER IN SERVICE OR ABANDONED. THE SURVEYOR FURTHER DOES NOT WARRANT THAT THE UNDERGROUND UTILITIES SHOWN ARE IN THE EXACT LOCATION INDICATED ALTHOUGH HE DOES CERTIFY THAT THEY ARE LOCATED AS ACCURATELY AS POSSIBLE FROM INFORMATION AVAILABLE. THE SURVEYOR HAS NOT PHYSICALLY LOCATED THE UNDERGROUND UTILITIES. CALL 1-888-DIGSAFE AT LEAST THREE BUSINESS DAYS BEFORE PERFORMING ANY CONSTRUCTION. DUE TO OSHA CONFINED SPACE REQUIREMENTS, ALL INVERTS AND PIPE SIZES MUST BE VERIFIED PRIOR TO ANY CONSTRUCTION.

PLAN REFERENCES

1. "PLAN OF PROPERTY IN PORTLAND, MAINE MADE FOR CITY OF PORTLAND, PROPOSED NEW SCHOOL, BECKETT STREET, DEC. 19, 1956, H.I. & E.C. JORDAN-SURVEYORS."
2. "BOUNDARY SURVEY 61-65 WILSON STREET, PORTLAND, MAINE MADE FOR MEREDITH TURNER AUGUST 13, 2007" BY OWEN HASKELL, INC.
3. "TOPOGRAPHIC & PLANIMETRIC SURVEY ON MOODY ST., VESPER ST., WILSON ST. & MUNJOY ST., PORTLAND, MAINE MADE FOR WOODARD & CURRAN" JULY 21, 2010 BY OWEN HASKELL, INC.

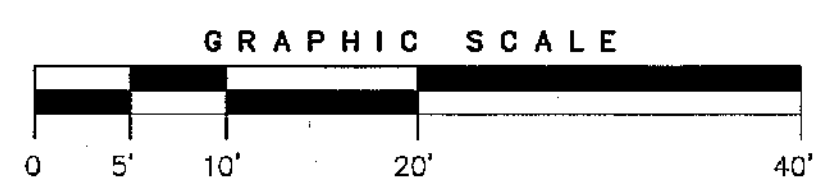
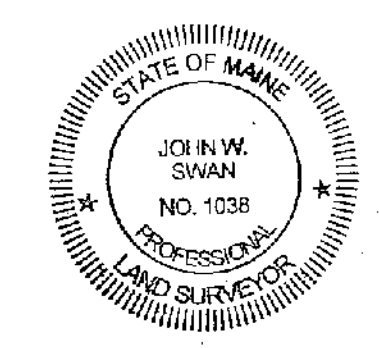
GENERAL NOTES

1. OWNER OF RECORD: CITY OF PORTLAND
2. PREMISES SHOWN AS TAX MAP 3 BLOCK M LOT 5 ON CITY OF PORTLAND'S ASSESSORS MAP.
3. BEARINGS ARE GRID NORTH BASED ON CITY MONUMENTS T102-69-7, T102-68-5.
4. ELEVATIONS BASED ON CITY DATUM.

CERTIFICATE

OWEN HASKELL, INC. HEREBY CERTIFIES THAT THIS PLAN IS BASED ON, AND THE RESULT OF, AN ON THE GROUND FIELD SURVEY AND THAT TO THE BEST OF OUR KNOWLEDGE, INFORMATION AND BELIEF, IT CONFORMS TO THE BOARD OF LICENSURE FOR PROFESSIONAL LAND SURVEYORS CURRENT STANDARDS OF PRACTICE, WITH THE EXCEPTION OF MARKERS NOT SET AT ALL CORNERS.

12/10/15
DATE
JOHN W. SWAN, PLS. NO. 1038



BOUNDARY & TOPOGRAPHIC SURVEY
AT
65 MUNJOY STREET, PORTLAND, MAINE
MADE FOR
ANEW DEVELOPMENT
17 CHESTNUT STREET, PORTLAND, MAINE

OWEN HASKELL, INC.
PROFESSIONAL LAND SURVEYORS
390 U.S. ROUTE 1, UNIT 10, FALMOUTH, ME 04105 207-774-0424

Drawn By	RS	Date	OCTOBER 21, 2015	Job No.	2015-234P
Trace By	JLW	Scale	1" = 10'	Drwg. No.	1
Check By	JCS	Book No.	FILE		